



Holiday Bee
by Phoebe Eloise Hoodless from Silloth Primary School

Solway Buzz

www.solwaybuzz.co.uk

September 2015

local news - for you - by you - about you - free to you - local news

FREE PAPER

Issue 138

Page 4
Scouting around



Page 5
Ediths 40 years of service



Page 7
What's in the garden



Page 8
Queen Sophie is crowned



Page 9
Elf & Fairy on a Unicorn!



Page 14
Albion FC present cheque



Page 15
Come and meet Ralph



Page 16
Bowling for the county



New Owners at No. 17 Delicious



Alison Henderson, who already runs the very successful Silloth Cafe and takeaway has purchased No. 17 Delicious on Eden Street from Katie Murray. Alison, with the help of

Kayleigh and Tiffany took over the business on the 20th of July and look forward to continue to serve you with a quality selection of Baguettes, Panini's, Breakfasts, Wraps and Coffees to sit in or take

away. They intend to offer new products and services, such as buffets and a delivery service. You can contact No. 17 Delicious on 016973 32458.

Be Part of a World Record Attempt on Silloth Green!

The Tour of Britain working group has decided that they will be attempting a world record on the day the Tour comes through Silloth (Tuesday 8th September).

They will attempt to get over 600 people to form a bicycle shape when viewed from the air.

People who wish to take part will need to turn up on Silloth Green at 12 noon, straight after the riders and cavalcade have gone through. They will need to follow the signs to the record attempt; it will be held on a section of the green that has been

cordoned off and signposted. People should look at posters and www.sillothwheels.co.uk and Facebook "The Tour of Britain comes to Silloth" for more information.

There is nothing strenuous involved but people will need to proceed to an allocated space and stand for at least five minutes to break the record. The event will be filmed from above and will appear on National TV. They want to encourage as many Silloth residents as possible to join in. They need a minimum of 600 people.

Tour of Britain article is on Page 15

2015 Events
23rd August
Silloth Half Marathon
28th to 30th August
Solfest
31st August
Silloth Carnival
8th September
Tour of Britain
10th to 13th Sept
Music & Beer Festival
24th October
Bonfire Night

The Tour of Britain Comes to Cumbria



Make a day of it

**WATCH IT IN
SILLOTH**

LOTS OF SUPPORTING ACTIVITIES

Tuesday 8th September

SOLDIERS in Silloth

**Model
Soldier
Experience**

Open:
Tuesday - Sunday

Admission:
Under 16 - £1
Adults - £2
Family ticket
(2 adults 2 children) £5

Criffell St, Silloth,
CA7 4BZ

soldiersinsilloth.co.uk

**Fantastic
for
Families!**

Coast to Coast by Steamer

Peter Bowron and his family decided they would like to do a coast to coast run to raise funds for the Great North Air Ambulance to celebrate the 100th birthday of their Albion steam engine.

They came over and stayed with Eric Davenport at Silloth before leaving on the 3rd August intending to get to Hartlepool on the 6th.

Peter and son-in-law Adam drove the steamer while wife Anne Marie drove the 50 year old truck carrying coal and 250 gallons of water for the steamer, daughter Charlotte drove their escort car.

Please donate for this worthy cause at: www.justgiving.com/albion100/



Top L-R: Anne Marie Bowron, Eric Davenport, Peter Bowron, baby Harley James, Charlotte Bowron and Adam Hardy
Below: Silloth Lifeboat, the Steamer and the coal wagon



Allonby Charity Calendar

The "Old Allonby" calendar is the latest initiative to raise funds for the restoration of the village hall. The calendar features twelve rarely seen old photographs of the popular seaside village featuring various modes of transport from sailing ships, horse drawn carriages and carts, vintage cars and motorcycles.

Pictures were kindly supplied by Peter Ostle, Roger Hart and Martin Reid.

The calendar will be on sale, at £5 each. 750 copies of the calendar have been designed and produced by Firpress of Workington



which if sold out could raise over £1,000.

The calendar will be on sale in establishments and shops around the village including "Pig in the Bath" Antique and Reclamation barn which attracts people who appreciate an eclectic array of artefacts from the past.

Strawberry Teas Raise £1,800

Holme Cultram Abbey PCC would like to say a big thank you to all those who came, donated and supported the Strawberry Teas weekend in July.

A total of £1,802 was raised for the Abbey.

Grand Raffle of Patch-Work Quilt & Crafts

Report by: Jennifer Bailey

On 13th October 2015 there is to be a Grand Raffle held in St. Andrew's Church Hall in Silloth, to raffle a patchwork quilt which was started by the late Mrs Sue Hulbert and completed by members of the Patchwork Heaven Group in Silloth.

Mrs Hulbert's husband Ted requested that the proceeds from the raffle should be included with monies raised by a recent sale of Mrs Hulbert's crafting items and donated equally to the Silloth RNLI and The Royal British Legion.

The raffle is to be held at 2pm - 3:30pm and will include other handmade prizes donated by the Patchwork Group.

An entrance charge of £2 will include refreshments.

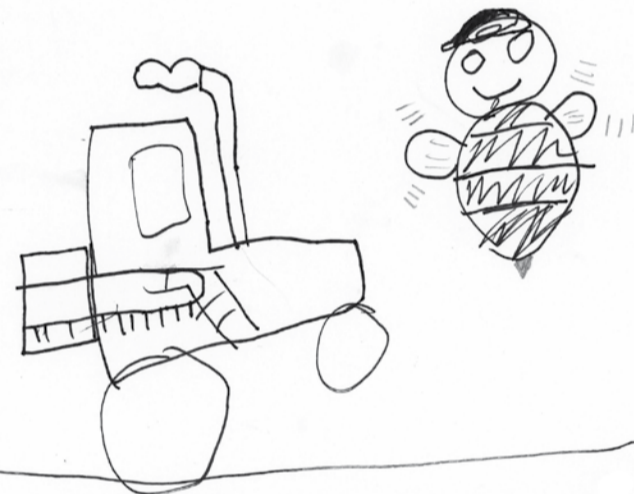
Red Ensign Day



Since 2000, Merchant Navy Day on 3rd September has honoured the brave men and women who kept our island nation afloat during both World Wars, and celebrated our dependence on modern day merchant seafarers who are responsible for 95% of the UK's imports, including half the food we eat.

This year Seafarers UK is campaigning for the Red Ensign, the UK Merchant Navy's official flag, to be flown on 3rd September on public buildings and landmark flagstaffs.

More than 400 Local Authorities and port authorities have been invited to participate in this year's celebration.



Farmer Bee by Henry Armstrong

JayBee's

NEW: Frozen Fishing Bait Hooks & Weights

Milk 2 litre £1.30

2 x 2 litre Milk for £2

6 Free Range Eggs £1

Bacon £1 a pack * Pizzas from £1

1kg bag Oven Chips £1

Toys • Off-Licence • Hardware • Gifts

Carpet Cleaner Hire • Key Cutting

Watch Batteries & Straps Fitted

open 7 days a week

6 Criffel Street, Silloth, Tel: 016973 31245

Reem Nails & Beauty

Rachel Elisabeth Holden Pine Glen
Beauty Room and Mobile Service Petteril St.
07792 394916 Silloth
reemnailsandbeauty.moonfruit.com CA7 4DH

Aromatherapy Massage, Swedish Massage, Indian Head Massage, Facials, Hands and Feet, Shellac, Minx, Twinkles, Enhancement, Removals, Eye Enhancers, Spray Tanning and Waxing.
Prices are extremely affordable and appointments are flexible.

ANIMAL & POULTRY FEED

(farm deliveries)

(hay & straw available)



CALOR GAS AGENTS

(discounted prices)

(free local delivery & connection)

PREMIER CONVENIENCE STORE

open 6am-8pm Mon-Sat, 7am-7pm Sunday

Harrisons Store Ltd, Abbeytown

Tel/Fax: 016973 61231, M: 07972 805074

D.A. Harrison

HAULAGE & QUARRY OWNERS



Haulage & Storage
Sand, Gravel & Aggregates
Readymixed Concrete
Demolition & Site Clearance
Licensed Waste Disposal Site & Skip Service
Stevedores at Silloth Docks

Admin: 016973 42277 Transport: 016973 44000
Skip Hire: 016973 31000 RMC: 016973 61777
Fax: 016973 42210
Waverton, Wigton, CA7 0AE

ATLAS

CONCRETE LIMITED

Tel: 016973 32585 or 016973 42277

After Hours: 016973 61753

Waverton, Wigton, CA7 0AE

MANUFACTURERS OF ALL TYPES OF PRESTRESSED CONCRETE PANELS AND GENERAL PURPOSE INSTANT WALLING

SILAGE FARM AND INDUSTRIAL USE, HOLLOWCORE FLOOR UNITS AND 'T' BEAMS MADE TO MEASURE

CONCRETE POSTS & PANELS FOR INSTANT SECURITY WALLING

DA Harrison & Company

Petrol ~ Diesel ~ Land Drainage Pipe
Water Pipe & Fittings

Coppins Garage, Waverton, Wigton
Tel: 016973 42277

Third Green Flag Award!



grand regency townscape and the sea front promenade, for many years attracting visitors seeking

Silloth Green in Silloth-on-Solway, Cumbria is one of the very best in the UK – and that's official.

The Green is among a record-breaking 1,582 parks and green spaces that have received a prestigious Green Flag Award – the mark of a quality park or green space.

The award recognises and rewards the best parks and green spaces across the country. A Green Flag flying overhead is a sign to the public that the space boasts the highest possible standards, is beautifully maintained and has excellent facilities.

Councillor Bill Jefferson, Chair of Silloth-on-Solway Town Council's Parks Committee, said: "We are absolutely delighted to receive a Green Flag Award for the third time from Keep Britain Tidy."

Three separate park areas, namely: 'The Green,' 'Harbour Green' and 'Skinburness Green,' are collectively known as 'Silloth Green,' one of the largest village greens in the North of England. The green space boasts spectacular views over the Solway Firth to Criffel and the Caerlaverock Hills in the North and the Lake District to the South. It forms a green link between Silloth's

fresh sea air and recreational facilities.

Successful funding bids in 2010 resulted in a two-year programme to refurbish the Green and restore its heritage buildings. Heritage Lottery Fund put forward £1.1m and the Rural Development Programme for England provided funds of £100k. The Edwardian ladies toilets, built in 1910 and the spectacular Victorian pagoda built on a mound overlooking the sea have been sympathetically refurbished.

Officially re-opened in 2012, the Green now boasts a modern water play area, an entertainment area in local Cumbrian sandstone, a woodland adventure play area, a Putting Green and newly revamped BMX track. Interpretation panels and signage provide information and beautiful oak picnic tables and benches are to be found in various locations, all accessible by new shrub lined paths that allow disabled access to all main areas.

The Green's Community Garden, funded by Heritage Lottery and designed with input from local people, was opened in May 2014. 'Friends of the Green' care for the 'Community Garden,' which is situated on the corner of Criffel Street and Lawn

Terrace. During 2015, the new Rose Garden, which is situated closer to the sea, benefitted from new drainage and has been replanted with a variety of roses and a number of bee loving plants. A Bee Hotel/Bug Hut has been erected in the middle of the striking display of rose bushes, plants and shrubs, creating a haven for insects and the local bee and butterfly population.

Regular events, organised by volunteers, are held on the Green annually, including Silloth Green Day, the Steam and Vintage Rally, Silloth Beach Half Marathon and 10K, The Summer Carnival, Theatre on the Green, and the Silloth Music and Beer Festival. General information and more details about events can be found on the Silloth Green website at www.sillothgreen.co.uk

Tony Markley, Mayor of Silloth, said: "This Award recognises Silloth Green as a well-managed, high quality green space, which could not have been achieved without the dedicated work of our Town Council staff, grounds maintenance team, and community volunteers. This Award recognises and highlights that people in Silloth and visitors to the town are benefitting from a green space of the very highest quality."

Masons at Maastricht



Report by: Kevin Anderton
Photos by: Keith Robinson

Members of the Miramar Lodge of Freemasons based in Silloth recently joined other masons to travel overland all the way through France and Belgium to see the live show of violin virtuoso Andre Rieu and his Johann Strauss Orchestra.

The trip was exhilarating and enabled masons from all over Cumberland and Westmorland Province to renew and make acquaintances. The concert was as usual exceptional with a sublime mix of classical, folk and other music genres. An overnight stay in Calais was confused by our French

cousins who cancelled the ferry we were booked on and made a detour to the port of Dunkirk a necessity. Next day we travelled on to the beautiful city of Maastricht to sightsee and see the concert.

After a superb breakfast (including Dutch Pancakes) we travelled back to Calais where after a further

overnight stay and a visit to the wine warehouse we made our way home.

A brilliant trip well organised and executed, roll on the next one.

For info on the Miramar Lodge, please contact 07778 700118 or write to Miramar Lodge, Station Square, Station Road, Silloth, CA7 4AE



Silloth Town Council Report

Report by: Denise Pattinson

The Silloth-on-Solway Town Council monthly meeting was held on Monday, August 3rd. Here are a few points of interest.

1. Police Community Support Officer's can now give out fines to dog owners who do not dispose of their animal faeces appropriately, and to people who are found littering. At present they are handing out doggie bags and talking to the possible offenders, but fines will be handed out to persistent offenders.

2. Clare Stabler, who runs the Friday Night Project in the hall at Solway Community School, spoke to the Councillors about the

future of the venture. The scheme has a membership of over 70 school age children, with 20-30 regularly attending each week. They are at present heavily involved with the Tour of Britain preparations but they are always looking for local projects to get involved with, including grass and weed clearing, gardening, etc. The present funding they have has now come to an end and applications have been made to various groups to continue the work but until then, she wondered if the Council would be willing to contribute to the running costs of the group. This matter will be fully discussed at the next meeting.

3. A shelter at

Skinburness has been the subject of a Facebook campaign, with residents requesting that it be repaired. The Council had originally included the construction of a new shelter in the bid to the Heritage Lottery Fund for the regeneration of the Green but due to a cut in the funding, it was put on hold. Storey Decorators have kindly offered to paint the shelter when the repairs are completed. It was decided that tenders be obtained for the necessary work and the Town Clerk will look into possible sources to fund the project.

4. A footpath at West Silloth is in urgent need of being cleared. The footpath in question begins at the

letter box and is located behind 5-11 and 85-91 The Crofts. There appears to be a query over who exactly is responsible for the area. The Town Clerk will investigate further and report back at the next meeting.

5. A summary of responses to the Town Council's 2015 questionnaire are now available to view at the Silloth-on-Solway Town Council website.

Town Council meetings take place at the Community Hall, on the first Monday of each month.

All welcome and if you have any issue you wish to be discussed, please contact the Town Clerk. Full details are available at the website. silloth-on-solway-tc.gov.uk/



Summer Bee by Sophie-Niyomlae from SCTC

Employee Morning

Come along on Saturday 12 September 2015

We are providing independent advice so you know what recent workplace pension changes and auto enrolment mean to you.

For more information or to book your place
e: vicky.johnston@david-allen.co.uk
t: 01228 711888

David Allen
Employer Services

CARRS COACHES



Coach & Minibus Hire, Tours & Excursions
Private Hire & Parties Welcome
Tel: 016973 31276
07720 560 595

The Good Companions Residential Care Home

Long & Short Term Stays in
Single En-Suite Rooms
Meals on Wheels service
available locally



www.gchc.co.uk

Criffel Street ~ Silloth ~ tel: 016973 31553

BEACON



Open Surgeries
Silloth Open 12am-3pm
Consults 1:30pm-2:30pm
Wednesday 6pm-7pm
Aspatria consults
6pm-7pm
Appointments at other times by arrangement
016973 20242

1st Silloth Scout Group

Report by: Angela Ellwood

Our Cubs and Scouts attended their first camp with the Solway and Derwent District Camp held at Ratlingate. The young people spent two nights under canvas experiencing bright sunshine along with a thunderstorm with heavy rain. All the young people survived!

The first night was a traditional camp fire with Scouting songs and also songs in Japanese. Japan is the theme of this years' event, Japan being the location of the 23rd World Scout Jamboree. Saturday saw a very damp start to the day however activities throughout the day kept everyone entertained from beginning to end. Activities included building a huge climbing frame to archery. Sunday saw camp being broke in the morning for fear of the weather. More games were organised before a roast Sunday lunch - who says you have to slum it camping? Everyone thoroughly enjoyed the weekend, hopefully we'll be able to organise more for next year!

The Beavers, Cubs and Scouts finally made our visit to the Fire Station after a false start when the crew were called out to the Flimby fire. Darren and



Barry provided a detailed explanation of the equipment the crew use to help in a variety of incidents. The highlight was being able to squirt the fire hose! Grateful thanks goes to Darren and Barry for allowing us to visit and giving up their free time - thank you!

The Fire Station is not operational 24 hours a day due to the falling numbers of crew. If anyone would like to join as a retained fire fighter there is no age limit, it simply a fitness assessment. If you'd like more information.... please inquire - if the community doesn't support

it we will be serviced all the time by Aspatria and Wigton, which is a 15 minute delay which really could be the difference between life and death. Also a reminder, you can have FREE smoke alarms installed by the Fire Service - please contact Cumbria Fire & Rescue Service.

Water Activity Day - The Beavers went to Scarness for a Water Activity Day - in keeping with the theme, it rained most of the morning but this really didn't dampen the spirits of our Beavers. The main focus of the day was to gain the 'Time on the Water' badge by spending

at least sixty minutes on Bassenthwaite using both Canadian canoes and Dragon boats. With over 40 Beavers on site, the day was filled with fun and laughter and a lot of soaking children and soaking clothes. Everyone left happy and exhausted!

If you'd like to join Beavers, Cubs or Scouts please let us know. We expect to have space in each section in September. Contact us as soon as possible to be entered onto the waiting list. You can contact Tania Irwin, Jen Henderson, Andrew Stanley or Angela Ellwood.

American Night at St Andrews Church Hall

Report by: Jennifer Bailey

YEE HAA Y'ALL.

The tables were laden with food, the hall was crowded with downhome folk and the whole room was buzzing.

Penny and Peter Stimson, together with their band of "Squaws and Cowgirls/Boys" worked tirelessly to keep everyone's plates filled with roasted ribs, chicken wings, beef, etc., with plenty of salads and pretzels, whilst country and western music played.

The quiz came next with Pete's quiz master skills and "creative" style of adjudicating causing a certain amount of hilarity and good humoured heckling. "Reverse Order Inc." won the American quiz with 42/50 points and we all then enjoyed liquid refreshment and Pumpkin

Pie, which was followed by a singalong of various well known melodies.

A raffle was very clearly called by Rev. Dave Harkison of Whitehaven and many prizes were won. The raffles at Penny's events are very well supported with prizes being donated by friends and members of St. Andrew's Church and for which many thanks are due.

The whole band of supporters did sterling work behind the scenes and thanks go to Edith Kirk, Joan Bowe, Sue Calvert, Kirstine Proud and Rose Blaylock for all their help.





Solway Street, Silloth



£1



buy 3 for
£1*



3+1 FREE
£1



£1



100%
Extra Free



£1

Weetabix offer includes Chocolate / Golden Syrup 12 Pack; Robinsons Fruit Shoot V-A-S 4 x 200ml; S Budget Energy Drink 250ml; McVities's Jaffa Cakes includes 100% EXTRA FREE 292g; Cadbury Twirl / Caramel / Double Decker / Flake 3 + 1 FREE Pack; Walkers Crisps V-A-S 6 Pack. All offers subject to availability until 23rd September 2015. E & O. E.

OPENING HOURS

Mon to Sat 7:30am - 10pm
Sunday 8:30am - 8pm

FOR EASIER SHOPPING WE ACCEPT ALL MAJOR CREDIT CARDS










HURRY Get Your Silloth Music and BeerFest Tickets Now!

It is getting close to that time of year when we have the last event on Silloth Green.

If you haven't already got your tickets for the Silloth Music & Beer Festival, get them soon, as this year it is looking to be the busiest and best one yet.

As well as top national acts we have a host of top local talent, many playing Silloth for the first time. Miss Cindy Hoten is fetching her six piece band. Superfly, The Fiction and Broken English are among a host of new bands at the festival, as well as over 75 real ales, ciders and wines.

For those looking for camping or caravanning, take a look at the great inclusive deals available from Stanwix Park or the Solway Holiday Village. These deals include weekend tickets for the festival.

Silloth Music & Beer Festival has all genres of music covered, there should be something for everyone. In addition you also experience the fabulous ambience and hospitality of the wonderful Silloth folk, we hope to see you there!

SeavorChartered
Accountancy, Tax & Business Advisers

Qualified Small Business Accountants who don't charge the earth.

FREE initial meeting

Over 20 years experience helping individuals & businesses achieve their financial goals.

Tel: 01228 904 904

www.seavorchartered.co.uk

Happy Birthday



Report by: Jennifer Bailey

Mrs Catherine Waugh of Little Acres Residential Home on Skinburness Road, celebrated her 90th birthday on 13th July 2015 with other

residents and friends wishing her well.

Mrs Waugh was presented with a birthday cake and a party followed which was enjoyed by all present.

Forty Years of Service!

Report by: Penny Stimson

In August 2015, one of Silloths well known lay preachers celebrated forty years in St Andrews Church.

Mrs Edith Kerr came to Silloth from Lockerbie forty years ago to be a Warden at Pennine View. Her late husband Ian came to work at Fine Fare which was situated where the BlueDolphin Tea Rooms now resides.

They quickly became members of St Andrews, with Ian being an elder and twenty years later Edith qualifying as a lay preacher after first teaching Sunday School for twenty years. They came with two of their six children (five boys and one girl) as the older four were grown up.

Edith has served St Andrews faithfully over the forty years and in fact St Andrews would have closed if Edith had not been so determined that this should not happen.

On Tuesday 4th August a presentation was made by the Rev. David Harkinson, our Vicar at St Andrews, on behalf of all Church Members to Edith in St Andrews Hall during 'Our Door's Open' light lunches. These are

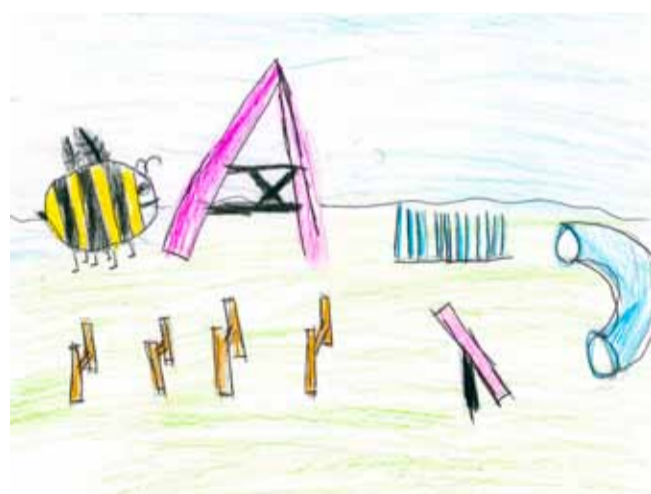


held every Tuesday from 12 to 1pm, and it is Edith who is the Head Cook for our delicious soups for all members of the community.

All at St Andrews Church pass on their great love for Edith and thank her for her devotion over the past forty years.



Cupcake Bee
by
Naomi Bell
from
Silloth Primary
School



Agility Bee
by Sophie Hetherington from Silloth Primary School

Edge Learner of the Year



Fiona Milne (left) being presented with flowers and a gift voucher from Matron Anne Blair on behalf of Silloth Nursing Home Management Committee for being the Edge Learner of the Year

The Edge is a Cumbrian local enterprise partnership project.

This was the first award event held by the Edge

partnership project and the quality of all the entries was outstanding. Everyone at the Nursing Home is very proud of Fiona and her wonderful

achievement on winning this prestigious award and would like to wish her all the best when she commences her nurse training in September.

The Lowther

Village Pub and Dining

Quality, home cooked food using the freshest local ingredients served Monday 6-9pm, Wednesday to Saturday 6-9pm, and Sundays 12-8pm - No food on Tuesday

Bar open seven nights a week with choice of 3 real ales

Large Beer Garden

*** Tapas Nights first Friday every month ***

The Lowther, Mawbray, Maryport, CA15 6QT
Tel: 01900 881750 www.mawbraypub.co.uk

Slimming WORLD

because you're amazing

Meet at
Silloth Rugby Club
every Saturday
morning at 9am
or at 11am

An hour a week can change your life!

Contact:
Denise Broughton on
07799 708465

Wheyrigg Hall

BAR / HOTEL / GRILL

Real Food & Good Ale
served 7 days a week



Recommended by
tripadvisor

Friday Night
Steak Deal
Rump, Fillet or Sirloin:
£10.10

WHEYRIGG, ABBEYTOWN, WIGTON, CA7 0DH
TELEPHONE: 016973 61242

Top Secret Roadshow

Mobile
Disco
for Any
Occasion

Weddings,
Family Celebrations,
Christenings to Funeral
Wakes, Fundraising Events,
also Carnivals & Village Halls

Contact: Eric Stanwix
ericstanwixjr1@btinternet.com
Home Tel: 016973 32141
M: 07736 774 788

Buzz Around Mawbray



A fantastic aerial view of Mawbray taken by James Smith
See more of his wonderful landscapes at www.jamesmithphotography.com

£10,000 for Seaside Regeneration

Maryport and Silloth have received £10,000 each to set up Coastal Community Teams as part of a bid supported by Allerdale Borough Council.

The money has been provided by the Department for Communities and Local Government with the aim of bringing jobs, growth and prosperity to seaside towns and cities. The Government has provided more than £1m to fund 104 further Coastal Community Teams, on top of 12 existing pilot schemes.

The coastal community teams can also bid for a share of a new £3m Coastal Revival Fund and at least £90 million more will be provided by the Government in the coming years through the Coastal Community Fund, which the established teams will have access to.

Allerdale's two coastal community teams will each be developing Economic Plans for their areas, which must be completed by the end of January 2016. The two teams will be working with a

wide range of organisations within their communities to identify economic opportunities, particularly linked to sectors such as tourism.

Councillor Bill Jefferson, Allerdale Borough Council's Executive member with responsibility for tourism and culture, said: "The creation of Coastal Community Teams and their subsequent plans provides an opportunity to identify priorities and projects which will benefit from additional funding and targeted expertise. This might include new tourism attractions, the development of existing projects and the regeneration of key public areas. The Cumbrian coastline, and the Solway Coast in particular, offer real potential to Allerdale in developing its visitor experience and bringing even more people to this lovely area."

Dr Brian Irving, Manager of the Solway Coast Area of Outstanding Natural Beauty: "It's great news

that the Government has recognised the need to focus action on our coastline and we are delighted that Silloth on Solway has been chosen as one of the new Coastal Community Teams. This is a unique and special landscape which deserves to be invested in, and this resource will be used to focus on bringing people together to develop an economic plan based around sustainable tourism. We will then be in a good position to be able to unlock further funding to regenerate and realise the potential of this beautiful area."

Debbie Wright, of Love Maryport, said: "Maryport offers visitors a wide range of attractions and this money will help us spread the word about everything it has to offer. You can step back in time with a bit of roman history, or visit the aquarium, Clip 'n Climb, indoor caving and a beautiful harbour side. These attractions open a gateway to the north. There is something for everyone in Maryport."

Donation to RNLI & RBL



Report by: Jennifer Bailey

Members of The Silloth Patchwork Heaven Group gathered at Little Acres Residential Home where Mr Ted Hulbert now resides, a cheque for £300 was presented to Mrs Pat Froggatt who accepted on

behalf of the RNLI.

The donation was from part of a sale of craft items owned by Mr Hulbert's late wife Sue with the proceeds being given to the Silloth RNLI and The Royal British Legion.

It was at the request of Mr Hulbert that the items

should be sold and there is also to be a raffle of a quilt with the monies being added to the donations. Mr Hulbert and his wife were married for many years and Mrs Hulbert became a prolific crafter during her retirement from work as a Diagnostic Radiographer in Carlisle.

Are You Registered to Vote?

Households in Allerdale should have received a form asking residents to check whether the information that appears on the electoral register for those living at their address is correct.

This is part of Allerdale Borough Council's annual voter registration canvass.

The aim of the form is to ensure that the electoral register is up to date as well as identify any residents who are not registered and encourage them to do so. Therefore all residents can help by responding promptly to the household enquiry form that was delivered to your address after 8th August 2015.

If you have moved house, or have been added to the household enquiry form, you still need to register-to-vote individually. The Government has also announced that the

transition to this new type of registration – called Individual Electoral Registration (IER) – will complete at the end of this year. This means that anyone registered under the old household registration system, and not re-registered under IER, will be removed from the electoral register. This affects approximately 1,200 people in our area and it means it is really important for residents to respond to the forms we are sending out.

Andrew Seekings, Electoral Registration Officer at Allerdale Borough Council said: "Anyone that wants to vote must be registered. To make sure you are able to have your say at the elections next year, simply check the form when it arrives and reply as appropriate."

"If you're not currently registered, we'll send you

information explaining how to do this or you can just go online to apply to register at www.gov.uk/register-to-vote."

With Police and Crime Commissioner elections and the EU referendum taking place before the end of 2017, this is an opportunity for residents to make sure that when any elections take place they are able to take part.

Residents who have any questions can contact the elections team at 01900 702 550 and elections@allerdale.gov.uk. There is also more information on our website: www.allerdale.gov.uk.

WINTERS

POST OFFICE

Newspapers
Magazines
Sweets, Rock Novelties
Greetings Cards
Postcards
Gifts, Toys
Faxing & Photocopying

Eden Street,
Silloth-on-Solway
Shop: 016973 31323
PO: 016973 32957

Pink Poodle



Grooming Salon
Fully Qualified
Grooming Specialist

Dog Sitting

Sunflower Cottage
Blitterlees, Silloth CA7 4JN
Tel: 07519 223364

STANWIX PARK HOLIDAY CENTRE
SILLOTH ON SOLWAY

Presents...
Retro Music Weekend 2

13th, 14th & 15th November 2015

Headlining Friday Night

After much negotiation it's the best and most authentic tribute to the sixties in the land! Starring 'The Overtures' it's:

THE BOOTLEG SIXTIES

016973 32666
www.stanwix.com
Stanwix Park Holiday Centre,
Silloth, Cumbria, CA7 4HH.

Price List	
Weekend Ticket: £55pp Add Accommodation from £99.00 for 3 nights. (£24.75 each if 4 share)	Daily Tickets Friday Night: £20pp, Saturday: £30pp Sunday: £20pp.

Headlining Saturday Night



For our Saturday night headline act we are going back to the eighties with:

The Wild Boys!

These boys are widely regarded as the best LIVE 80's band in the UK today!



Sunday Afternoon 2 Rude

The UK's number 1 Ska tribute band! This musically accurate 7 piece band will take you back to the best sounds of Madness, The Specials, Bad Manners, The Beat and more!

Headlining Sunday Night Queen Fever!

Featuring Dean Richardson from the Legends show in Blackpool. Love Queen? Love Queen Fever!

Five sessions, night & day of live music from Friday Evening through to Sunday evening. It's all things pre millennium, a late 20th century musical memory masterclass. With massive professional stage sound and lighting added to 10 fantastic live acts from all corners of the UK, RMW is not to be missed!

Check out our full line up at: www.stanwix.com/events
Be cool, be old school!

RMW2

Bee Garden on the Green



Report & Photos by: Jennifer Bailey


What a grand job has been done with the rose garden on the green in Silloth, the variety of plants and the new layout are very impressive, particularly the new Bug Hotel and plant wigwams, brilliant.

Also, it's really lovely to hear the chimes from Christ Church again, I've really missed the sound especially on lazy, sunny, laying-on-the-green type of days, (and yes we have had some!). It all just goes together with lawn mowers and buzzing bees - residents of the Bug Hotel no doubt.

Above: the bee garden
Below: the insect house



The Queens Bed & Breakfast
Full en-suite rooms ~ Sea Views
Call: 016973 31373, Mob: 07753 859403
email: moregain@tiscali.co.uk
The Queens, 1 Park Terrace, Silloth

Silloth on Solway Community Shop
* Local people working for local causes *
* All proceeds go back into the community *
* Please continue donating *
* Collection can be arranged *
S.O.S.C.S.
Open every day 10am to 3:30pm
Tel: 32452  S.O.S.C.S.
12 Criffel Street Silloth

EST **Nº 17** 2015
DELICIOUS
Baguettes Panini's Breakfasts Wraps Coffee
17 Eden Street Silloth, CA7 4AD
016973 32458

Tanglewood Caravan Park Silloth-on-Solway
016973 31253
Bar on site
Tourers Welcome
Hire Vans & Seasonal Pitches
Tanglewood is a pet friendly family run park ideal for relaxing laid back holidays
www.tanglewoodcaravanpark.co.uk

COMPUTER PROBLEM? No Problem
We are your local specialists for:
Internet Problems
Printer Problems
Wireless Networking
Computer Running Slow
Advice for New Computers
Mark Hansford Computer Services
016973 32089

Are You a Carer?

Care with Confidence!
Perhaps you don't think of yourself as a carer, you may see yourself as the mother, husband, daughter, brother or friend of someone who needs care or someone who is doing their best for someone they love.

Maybe you feel uncomfortable with being defined as a carer?

West Cumbria Carers, in collaboration with Enabling Success Ltd, are now able to offer a "Caring with Confidence" training programme online via the West Cumbria Carers website.

You are so much more than a carer. So this programme will enable you to think about what you need; giving you practical skills, support, information or perhaps some time for yourself to reflect, re-charge and rejuvenate. Looking after yourself is after all common sense and yet it needs to be recognised that perhaps it's easier said than done.

The Caring with Confidence Bitesize programme is made up of three modules:

Module 1 - Managing



your role as a Carer with other aspects of your life

Module 2 - Communicating better with health and social care professionals

Module 3 - Caring on a daily basis

Within each module there are a series of video clips and downloadable documents covering various aspects of caring.

If you are worried about how long it will take, you do not need to complete the course in one session, once registered (which will involve you entering your email address and creating a password) you can visit the

website and watch the video's whenever you have a few minutes spare!

To register type the following address into your browser <https://www.westcumbriacarers.co.uk/registration/>

Once registered you can access the training at <https://www.westcumbriacarers.co.uk/training/>

Don't forget we are always here to offer support and information if you care for a family member, friend or neighbour. Contact West Cumbria Carers on 01900 821 976 or visit our website at www.westcumbriacarers.co.uk.

Watch out! - Scam Alert

On August 10th, a small business in Kendal was contacted by someone

claiming to represent an organisation called 'Cumbria Liaison', who are allegedly

either directly or through a third party.

The Constabulary advise people to ignore or hang up calls of this nature. Anyone genuinely working with the Constabulary will be able to provide details of the officer or staff member who they are working with. You should never part with any money until completely satisfied that the person you are speaking to is genuine. If they are, they will provide such details, and allow you time to check them out.

If calling the police for such purposes, do so from a different phone, as the caller may not have hung up, and should you try calling 101, you may speak to that caller again!

For more advice, please contact Action Fraud at www.actionfraud.org.uk or contact the Action Fraud Hotline on 0300 123 2040.



Lego Bee by Summer Marie Cash from Silloth Primary School

connected to Cumbria Constabulary and work with young people. They claimed to be selling advertisement space for a community policing magazine.

Cumbria Police can confirm that these calls are not affiliated to the force and that the Constabulary would never request money from businesses or members of the public,


Tanglewood Caravan Park Silloth-on-Solway
016973 31253
Bar on site
Tourers Welcome
Hire Vans & Seasonal Pitches
Tanglewood is a pet friendly family run park ideal for relaxing laid back holidays
www.tanglewoodcaravanpark.co.uk

COMPUTER PROBLEM? No Problem
We are your local specialists for:
Internet Problems
Printer Problems
Wireless Networking
Computer Running Slow
Advice for New Computers
Mark Hansford Computer Services
016973 32089

HAIR SHE GOES
By Mel
Over 20 years experience

For free consultation's
Tel: 07857 989358


MARKLEY
IT CONSULTANCY & SECURE STORAGE
STORAGE
CCTV Secured Storage
Containerised Storage
Business Outlets
IT SERVICES
Home & Business Repairs & Upgrades, Laptop's & PC's
MARKLEY.co.uk
Tel: 07720 560 595

Cushions & Covers,

Upholstery, Blinds, Curtains, etc.
Whatever your furnishing needs, ring Irene on 016973 31836

Abbeytown Carnival 2015

Report & Photos by:
Emma Bennett

Fortunately we were blessed with fairly good weather with only a little spot of rain on Saturday 25th July.

The procession started at 1pm led by the Thwaites Brewery horse and cart which was a fabulous touch for the carnival. The 'African' Carnival queen float followed which was different from previous more traditional 'Queen' floats, but went down really well and the work that had been put in was excellent.

There were four floats and lots of pedestrians that joined in on the day. We unfortunately couldn't get a band or Moky this year which was a big miss, however every one seemed to enjoy the carnival procession regardless.

The fun day after the carnival was busy and always enjoyed by many as all the activities (excluding refreshments and stalls) are free, we had three big bouncy castles, face painting, sports day, pillow fighting, Entertainment by Eric Stanwix Jr who brought a new band 'In Pursuit' with him and they played for a short set which was a welcome addition to the entertainment, tug of war men v women, which the woman thrashed the men at! and the iconic egg throw which as always was messy!

Winners of the Carnival:

- Best Village Float - Abbeytown African Carnival Queen
- 1st overall float - Abbeytown African Carnival Queen
- 2nd overall float - Abbeytown in Bloom
- 3rd overall float - Abbeytown goes to Wimbledon
- Best visiting float - Pixie Hollow
- Best pedestrian over 16 yrs - So Moneysupermarket.com
- Best pedestrian 11-15 yrs - Hulk
- Best pedestrian 5-10 yrs - Wizard of oz
- Best pedestrian under 5 yrs - Mickey and Minnie
- Best overall pedestrian 1st - Lego family
- Best overall pedestrian 2nd - Mine craft
- Best overall pedestrian 3rd - Maid Marion
- Spirit of the Carnival - Abbeytown goes to Wimbledon
- Junior spirit of the carnival - Great Cumbrian weather
- Most Humorous - Mrs Browns Boys
- Best dressed house - great Cumbrian weather
- Highly commended - Little Mac, Cinderella, Hulk, Scooby Doo, Spiderman, woody the cowboy, and every one else that joined in the fun!

All children that enter the carnival get a medal.



Outgoing Queen Sophia Fogg hands over to Incoming Queen Sophie Ferguson

All members of the Abbeytown Carnival Committee would like to thank every one who joined in and all those that supported us and that continue to support us every year.

Next year we hope to have more free activities on the field for every one to enjoy, so we will look forward to seeing you on the 30th July 2016!



Kathleen Ferrier Whattalife comes to Silloth

Performed at
Culterham Hall Mawbray
on Sunday 18th October at 7:30pm

A one woman show with music not to be missed telling the story of the Great English contralto whose voice and recordings are treasured to this day

Performed by Lucy Stevens and written using Kathleen's own words from letters and diaries

Tickets £8 from
016973 31925 or 016973 31626

Borderlines Carlisle Book Festival 2015

In association with **cumbrialife**
THURSDAY 3 TO SUNDAY 6 SEPTEMBER



James Rebanks · Owen Jones · Terry Waite
Charlotte Green · Kate Williams · Gervase Phinn
Salley Vickers · Jenny Uglow · Juliet Barker
and many more...

Borderlines 2015
Partners: Bookends, Carlisle Cathedral,
Cumbria County Council Library Service,
Tullie House Museum & Art Gallery
www.borderlinescarlisle.co.uk



Silloth CARNIVAL Monday 31st August 2015



Event times 11am-4pm - Carival Parade at 1pm
Live Music & DJ - Moky Fit - Face Painting
Local Crafts - Puppet Show - Mix & Mingle -
Above & Beyond Aerial Display
ANGIE MACK INTERNATIONAL HULA HOOPER FROM FAT BOY SLIMS VIDEO
'THAT OLD PAIR OF JEANS'



**SPECIAL GUEST STAR
BRITAIN'S GOT TALENT
SEMI FINALIST ~ EMMA JONES**



24 Peaks in 24 hours!



L-R: Bob Burns, Catherine Penrice, Emma Bennett and Sally Burns drinking bubbly on top of Scafell Pike on the occasion of Catherine's 40th birthday

On the 19th and 20th September 35 Lloyds Banking Group colleagues will be walking 24 of the highest peaks in the Lake District in 24 hours! Massive mountains including, Scafell Pike, Helvellyn, Great Gable, Green Gable, Ill Crag, and Broad Crag.

This challenge is to support and raise loads of money for BBC children in Need, where 100% of the donations are given to children's charities in the UK only.

Emma Bennett from Abbeytown has been training

really hard all year and this will be a massive challenge for her, but it is something she loves doing and this is a fantastic cause!

Emma knows there are loads of fundraising going on at the moment but Emma would appreciate any sponsorship/donation, however big or small to help support this fantastic cause.

With the help of her fabulous team in the Lloyds Bank in Workington they have been organising lots of fund-raisers in the branch,

and Emma has also sold two Solfest tickets she won in a raffle. She donated the money to BBC Children in Need too, but Emma needs loads more support if she is to smash the £2,500 target



she has set herself! You can donate by visiting Emma's BT my donate page at: <https://mydonate.bt.com/fundraisers/emmabennett1>

Fairy Day on the Green



Report by: Owen Martin

Silloth Green played host to the first Fairy Day goes to the Seaside, where fairies flew and pirates sailed in for what was a truly magical day.

There was lots for everyone to do, Fairy

Dancing, Unicorn Rides, Nia Dance, Small Kid's Unicorn Rides, Stalls and a Fairy Door Trail through the pines kindly sponsored by the Fairydust Emporium.

A massive thank-you to Magical Mel and her

wonderful team who did an amazing job of keeping all the little ones and big ones entertained throughout the day.

We hope she flies in next year for another fabulous Fairy Day at the Seaside.

Silloth Group Medical Practice

OPENING TIMES: 8am – 6:30pm
Tel No: 016973 31309 Fax No: 016973 32834

DON'T BE LEFT OUT OF THE 2015 FLU CAMPAIGN !!

If you are over 65 years of age or suffer from one of the following:

Chronic respiratory disease, including asthma (requiring continuous or repeated use of inhaled or systemic steroids)

ie prescription of certain steroids within 6 months. Asthma with previous exacerbations requiring hospital admissions in the last 12 months,

Chronic heart disease, Chronic kidney disease, BMI over 40,

Learning Disabilities, Chronic liver disease, Diabetes, Pregnant,

Have had a stroke or a TIA, Suffer from MS or other diseases of the central nervous system.

A carer for the elderly or disabled, or a patient in a long stay residential home. Immunosuppression.

Children aged 2,3 and 4 year olds.

You are invited to attend either the surgery or one of the following clinics being held at:

Silloth Church Hall—Monday 5th October 9am to 12pm

Silloth Surgery—Friday 9th October 9am to 12pm

Abbeytown Hall—Monday 12th October 10am to 12pm

Silloth Surgery—Friday 23rd October 9am to 12pm

NO APPOINTMENTS REQUIRED

CONTACT THE SURGERY IF YOU ARE "HOUSEBOUND" AND NEED A HOME VISIT

(If we visited you last year we will NOT automatically visit you)

If you are over 65 also ask about having a pneumococcal vaccination at the same time

Please note that we are unable to give the flu vaccination to anyone who does not meet the above criteria.

NEW GP STARTING IN SEPTEMBER DR NICOLA WILLIAMS

We are pleased to announce that we have a new GP starting with us in September.

Dr Williams is a very experienced GP and we are very much looking forward to her joining our team.

SURGERY CLOSED ON:

Please note that the surgery will close from 1pm on the following dates for staff educational training.

Thursday 17th September

Wednesday 21st October

Thursday 19th November

CHOC will take all Emergency calls. 03000 247 247

CALLING ALL 17 AND 18 YEAR OLDS.....

MENINGOCOCCAL GROUPS A,C,W AND Y (Men-ACWY)

We are running a new vaccination programme for all 17 and 18 year olds born between 1 September 1996 and 31 August 1997. This vaccine protects against meningitis (inflammation of the brain) and septicaemia (blood poisoning) caused by meningococcal groups A, C, W & Y.

It is very important that you take up this vaccine. It is being offered in response to a rapidly growing increase in cases of a highly aggressive strain of meningococcal disease group W.

This disease can cause meningitis and septicaemia that can kill in hours and those who recover may be left severely disabled. This vaccine also protects against three other group A, C & Y.

Also if you are planning to go to university and are still under 25 please make an appointment as soon as possible before leaving for university.

You are more at risk of meningitis and septicaemia in the first weeks at university when you mix with lots of new people, some of whom may unknowingly be carrying the meningococcal bacteria which is usually spread through prolonged close contact.

Please contact the surgery to make an appointment with the nurse to have this vaccination ASAP

Come and join in with the family fun at



On Sunday 20th September 4.00pm - 6.00pm With refreshments

At Holme Cultram Abbey Church

All children must be accompanied by a responsible adult.

For more information please contact Anita 016973 61113



Holme Cultram Mothers Union

Day Trip to Kirby Lonsdale and Barton Grange Garden Centre

On Saturday 17th October 2015

Leaving - Silloth, Community Centre at 8.00am
Abbeytown, Harrison's Store at 8.15am,
Wigton, St Mary's Church at 8.30am
(Times are approximate)

Names and £10 deposit please to Brenda Sim 016973 61224 or Anita Norman 016973 61113



Karen Campbell



Rise: What - and where - is home?

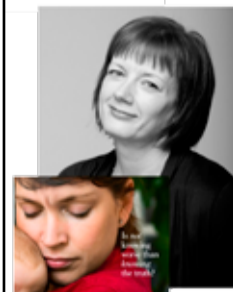
Carlisle Library, 11.30am
Saturday September 5th
Tickets £6

Rise is Karen's sixth book, a novel about love, freedom & finding your place in the world.

Buy tickets online at www.borderlinescarlisle.co.uk or at Bookends Carlisle, 01228 529067



Amanda Brooke



The Missing Husband

Carlisle Library, 1.30pm
Sunday, September 6th
Tickets £6

The Missing Husband is a novel which looks at the secrets within marriages and the way one white lie can change a life forever.

Buy tickets online at www.borderlinescarlisle.co.uk or at Bookends Carlisle, 01228 529067

Letters

Dear Buzz,

The ship's keel in Allonby bay: does anyone know its story?

There's very little left of what was once a boat, and what's left of the keel is encrusted with barnacles, honeycomb worm tubes, weed and whelks. Does anybody know its history? What age it is, or when it was wrecked or abandoned?

I write about the Solway, and lead informal walks along the shore at Allonby Bay and Beckfoot - and I would be really interested to know more about the keel.

So if you can help, please do get in touch with me, Ann Lingard, by email enquiries@annlingard.com, by phone 016973 21967 (or even via Twitter to @solwaywalker).

Ann Lingard

Dear Buzz,

Unfortunately, due to ill health I am unable to do the 'Lands End to John o'Groats Cycle Ride' this September.

The monies collected have already been donated to Watchtree Nature Reserve for their benefit.

Many thanks to everyone who has supported me, please accept my apologies.

Chris Ball

Poems

Night Thoughts
by Mrs Jennifer Bailey

*Why is it when worries come on with a bite
They always enlarge in the dead of the night,
When you're all alone and need comfort and cheer,
The whole world's asleep and there's nobody near.*

*Nobody to talk to of troubles and grief,
Nobody to hold you and give sweet relief.
You sit and you cry - your whole being gives way
You're in desolate turmoil and long for the day.*

*The dawn then emerges through misty grey gloom
The sun starts to shine and brings life to the room,
The long night is over, the day will now start
To help sort your thoughts out and give you new heart.*

*When all is resolved and peace reigns supreme
You'll climb into bed and drift off in a dream,
You'll forget all the heartache, the pain and the fright
That worrying brings in the dead of the night.*

I Love Silloth
by Penny Stimson

*I came to Silloth to retire
and what a joy it's been,
the friendly faces everywhere
are something to be seen.*

*I love living at Silloth
it's a lovely place to be,
no matter where you live
your not far from the sea.*

*The people are so friendly
they greet you as they pass,
when walking along the front
or sunning on the grass.*

*And when the sun is shining
and the sky is bright and blue,
there's no where else I'd like to live,
well tell me, would you !!*

Trouble
by Joan Bennett

*The trouble Tim has with trouble is it's never far away
Trouble bothers poor old Tim every single day,
He doesn't look for trouble it manages to find him,
He does his best to get it right but nothing works for Tim.*

*Tim works on a building site with twenty other men,
If things go wrong the men all say, Tim's in trouble again,
Dashing off to work one day Tim got in a state,
I'm in trouble once again he'd cried I'm going to be late.*

*If he's asked to do a job he always gets into trouble,
If he's told to trim some bricks, they finish up as rubble,
One day his mate Joe and he put new slates on a roof,
Tim denied that he'd broken some but he didn't have the proof.*

*For the trouble Joe had caused him Tim did play some tricks,
He vowed revenge upon poor Joe and a pail of cement did mix,
The plan he had was simple, he'd hang the pail quite high,
Then tip the pail and contents on Poor Joe as he walked by.*

*More trouble, the plan went wrong no contents hit Joe's head,
They'd missed the intended target and hit the boss instead,
He'd tried to make excuses give someone else the blame,
But no one would believe him, trouble's his middle name.*

OPEN HOUSE
at
Pennine View
Sheltered
Housing
on
Friday 28th August
from 1pm to 3pm
Please Join Us
for a
Table Top Sale
& Raffle



Bunny Bee
by Amber Hagan from Silloth Primary School

Non-Commercial Tourism Websites

- solwaybuzz.co.uk
- sillothgreen.co.uk
- sillothonsolway.co.uk
- sillothgolfclub.co.uk
- vintagerally.co.uk
- sillothbeerfestival.co.uk
- silloth-on-solway-tc.gov.uk
- visitcumbria.com/wc/silloth
- soldiersinsilloth.co.uk
- solwayplain.co.uk/silloth1.htm
- facebook.com/sillothgreen
- facebook.com/silloth-carnival

Any other suggestions of sites useful for our visitors, please send them to the Buzz at: office@solwaybuzz.co.uk

Cumbrian Reads

Relax with a good book this Summer

Supported by
Anne Carruthers
Cumbria Library Service

Weightless
by Sarah Bannan

Before Carolyn Lessing arrived, nothing much had ever happened in Adamsville, Alabama.

All Carolyn's social media could reveal was that she had moved from New Jersey, she had 1075 friends and she didn't have a relationship status.

In beach photos with boys who looked like Abercrombie models she seemed beautiful, but in real life she was so much more. She was perfect. This was all before the camera crews arrived, before it became impossible to see where rumour ended and truth began, and before the Annual Adamsville

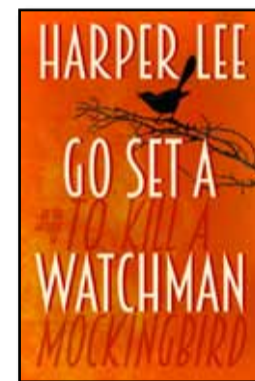


Balloon Festival, when someone swore they saw the captain of the football team with his arm around Carolyn, and cracks began to appear in the dry earth.

Go Set a Watchman
by Harper Lee

Maycomb, Alabama. Twenty-six-year-old Jean Louise Finch - 'Scout' - returns home from New York City to visit her ageing father, Atticus.

Set against the backdrop of the civil rights tensions and political turmoil that were transforming the South, Jean Louise's homecoming turns bittersweet when she learns disturbing truths about her close-knit family, the town and the people dearest to her. Memories from her childhood flood back, and her values and assumptions are thrown into doubt.



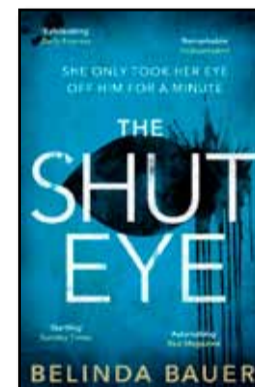
Featuring many of the iconic characters from To Kill a Mockingbird, Go Set a Watchman captures a young woman, and a world in transition.

The Shut Eye
by Belinda Bauer

Five footprints are the only sign that Daniel Buck ever existed - now they are all his mother has left.

Every day, Anna Buck guards the little prints in the cement. Polishing them to a shine, keeping them safe, all while spiralling towards insanity. When a psychic offers hope:

Maybe he can tell her what happened to her son? Is this man what he claims to be? Is he a visionary? A shut eye? Or



a cruel fake, preying on the vulnerable, or is he something far, far worse?

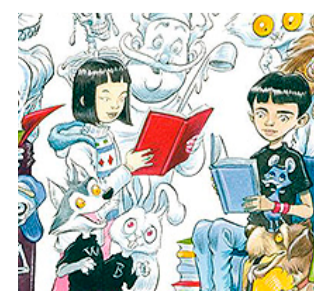
British Wireless for the Blind



The Library Service in Cumbria has teamed up with national charity British Wireless for the Blind Fund to ensure local people who have a visual impairment can get access to audio equipment.

The British Wireless for the Blind Fund is a national charity which provides audio equipment on free permanent loan to people who meet their eligibility

criteria. For Further information please contact Anne Carruthers on 01946 506403.



Masthead Winner

Carlisle Embroidery are generously donating a Solway Buzz embroidered Polo Shirt to the winner. This is in addition to the usual Winners Certificate and £5 Gift Voucher. So, come on kids, get drawing, the Buzz is always looking for more imaginative bees and yours might be the next winner. Send them in to the address on page 10 and a quality Solway Buzz embroidered Polo Shirt from Carlisle Embroidery could be yours.

You don't have to be at school here to send a bee to us. If you are here on holiday we would love to receive your bee drawing. Pick up a form from Silloth Tourist Information and return it there or send it to us, our address on page 10.

This month the winner is **Phoebe Eloise Hoodless from Silloth Primary School with a bee drawing called "Holiday Bee".**

Well done!



Silloth Local Link

Library & Tourist Information

Summer Opening Times

- Monday 10-1pm 2-5pm
- Tuesday CLOSED
- Wed 10-1pm 2-5pm
- Thursday CLOSED
- Friday 10-1pm 2-5pm
- Saturday 10-1pm

Tel: 016973 31944

Local Tradesmen and Services

Administration

The Bookkeeper
Bookkeeping, Payroll,
VAT, Administration and
Self Assessment Returns
Angela Ellwood MICB
Tel: 07919 121575
angela.ellwood@yahoo.co.uk

Car Valeting

Wash Your Wheels at Unit 3B

Wednesday 9am to 5pm
Thursday 9am to 5pm
Friday 9am to 5pm
Saturday 9am to 5pm
Sunday 10am to 5pm
Monday Closed
Tuesday by Appointment
Full Car Valet Services
& Hot Hand Car
Wash & Dry
Tel: 016973 32696
Mob: 07734 238617

Caravan Repairs

J. SCOTT GAS SERVICES

Motor Caravan & Caravan Repairs

- Servicing
 - Re-Sealing
 - Gas Servicing
 - Interior Repairs
 - Chassis Repairs
 - Damp Repairs
 - Accident Repairs
 - Van to Motorhome
Conversions
- Tel: 016973 49400
07823 440813



Decorators

Mike Jones Painter & Decorator

All aspects of interior
and exterior painting
and decorating.
Domestic and
commercial.
Friendly and reliable
service.
Free quotes and advice!
Tel Silloth: 07842 355486
E: mikedecorator53
@gmail.com

Peter Farnier

PAINTER & DECORATOR
Tel: 016973 33039
Mob: 07900 914484
Email: pelisethan@sky.com
RELIABLE SERVICE
Papering
Internal & External Decorating
Domestic & Commercial
Insurance Work
Free Estimates
Competitive Quotes



Denture Repairs

Addison Orthodontics
Dental Repair Service
54 Esk Street
Silloth, t: 016973 32208

Electricians

**Steven Henderson
Electrical**
All Electrical Work
Undertaken
Fully Registered Installer
Tel 016973 31163
Mob 07553 468819

Firewood

Seasoned Firewood Logs

**DELIVERY
AVAILABLE**

Tel: Ashley Sharp
016973 31495
07762 772208

Whinclose Firewood
Delivery Available
Tel: Roy Ivanson
Mob: 07949 358396



Gardening

Callum Findlay Garden Services



**Grass &
Hedge
Cutting**
Compact Tractor Flail
Mowing & Paddock
Topping
Garden Fencing
General Maintenance
Tel: 07765 314597
callumfindlay@ymail.com

Garden Services

Grass & Hedge Cutting
Pruning & Tree Surgery
General Maintenance
Tel Allen: 07768 496313

Joiners

DAVID READ Carpentry & Joinery

Property Repairs & Maintenance

FREE ESTIMATES

No Job Too Big
Or Too Small

City & Guilds
Approved with 30
years Experience

016973 32245
07759 783823

OUTDOOR JOINERY

All outdoor
joinery work

Maintenance &
Repair work of
all kinds

Laminate
flooring fitted

Tel Norman on:
016973 61256 or
0785 754 7783

Stephen Fraser
Qualified Joiner
Joinery & Kitchen Fitting
Local & Reliable
No job too small
Tel: 07809 870604



Plant Hire

DIGGERS For HIRE



JCB 8026

Ideal for little jobs. Driveways
and around the Garden.

JCB 86-C1

Suitable for housing sites,
ideal around the Farm.

Doosan DX225LC

The big jobs, Stripping ground,
Demolition, Crushing, etc.

Tel Eric Stanwix, Silloth:
07736 774 788

also available to Drive
Freelance on other Diggers
CPCS 360 above and below Ten
ton CSCS Card

Plumbers

KMG Plumbing & Heating

Gas, LPG, Oil, Solar &
Solid Fuel systems
Experienced and Local
Tel: 01900 881476
Mob: 07590 522621

Stuart James
Domestic Plumbing &
Bathroom Installation,
also Tiling
Reliable and Local
Tel: 07763 677752

07805 04502
016973 32263



Julie Ross
Plumbing
& Heating

Installation,
maintenance &
repair of domestic
plumbing and gas
heating systems

Julie is a fully
qualified &
registered
plumbing
& heating
specialist



558240
www.julierossplumbing.com

M. TAYLOR

Over thirty
years
experience
in the
installation,
maintenance
and repair of domestic
gas and heating
systems, all aspects
of domestic plumbing
undertaken no job too
small, local and reliable

Tel: 016973 32672
Mob: 07773 069856

**These
adverts
really do
work!**



Roofers

Allerdale & Eden ROOFING SERVICES

Slating & Tiling • Repairs • Lead Work
Flat Roofing Specialist
Fascias & Guttering
Velux Window Installations
Storm Damage • Insurance Work
Free Estimates and Free Advice



Maryport: 01900 813517
Whitehaven: 01946 313103
Mobile: 07518 454396



www.allerdaleandedenroofingservices.co.uk

PM Roofing Specialists

Proprietor Peter McKie, Established 1980

No job too big or small
Re-slating, Tiling, Chimney Stacks
Flat Roofing Specialists
(Firestone rubber cover & GRP Fibreglass
with 30 year guarantee)
uPVC Guttering, Facias & Soffits
Insurance Claims * Free Estimates

Tel: 01228 548591
Mob: 07931 362163 or 07833 305647

Window Cleaners

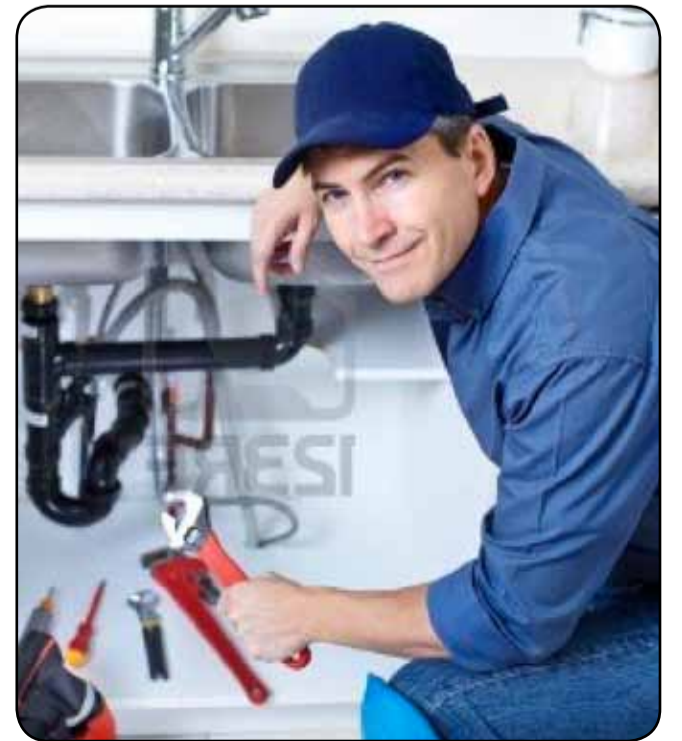
Abbey Cleaning Services

Call Ryan on 016973
61162 or 07732 270844
working throughout
Abbeystown, Silloth &
surrounding areas

**Advertise
in the
Tradesmens
Section**

**Advertise
in the
Tradesmens
Section**

only **£116**
for
ten issues
or a 7cm box
for only
£208
for
ten issues



On the Water Front

Report by: Captain Slog (Assisted by David at John Stronach Shipping Agency)

July 2015 Shipping

12th. Lise from La Pallice with wheat, then in ballast to sea for orders.

13th. Iberica Hav from Vierow with wheat, then in ballast to sea for orders.

19th to 29th Cherry Sand dredging New Dock and the Marshall Dock channel.

29th. RMS Wedau from La Pallice, then in ballast to Belfast.

30th. Wilson Gijon from Klaipeda via Ayr with part cargo fertilizer, then in ballast to Haugesund.

30th Pinnau from Kilroot with furnace bottom ash, then in ballast to Glasgow.

30th. Wilson Durness from Klaipeda with fertilizer, then in ballast to Ayr.

Birth of the 'New Dock'

Following the collapse of the Marshall Dock entrance in 1879, (see the November 2014 edition of Solway Buzz), and the success of the dock up until that point, its owner, the 'North British Railway Company', began making plans to build a second and larger dock immediately behind the now

gates made of greenheart timber, (an extremely hard and rot-resistant tropical hardwood), were built by Mr Muir, of Motherwell, each weighing 70 tons. They would be operated by hydraulic power, by extending the existing system already built for the Marshall Dock. This system would also power a number of static cranes and a coal hoist, to be located around the new dock. The dock walls would be protected by fixed pitch pine fendering, (some small remaining sections around the entrance knuckles are still visible today), and four large mooring buoys would be located within the dock to assist manoeuvring large vessels.

By June 1883, the 'Carlisle Journal' reported that considerable progress has been made, with the intended level of the dock bottom having been reached, whilst construction of the dock walls was well underway. Much of the excavated earth was tipped on the foreshore in front of the town, extending north-eastwards from the lifeboat station, (built 1860). This mass of dock excavation waste is now a raised and



A vessel (Silloth?) entering the newly opened New Dock

the opening event to be celebrated to any great extent, they had laid on trains from Carlisle at reduced fares and as a result, a large crowd had taken the journey from the city. The people of Silloth were certainly not going to allow the day to pass unnoticed. The houses and streets of the town were decorated with flags and banners. Soon after 11am, VIP's and invited guests began boarding several specially decorated vessels berthed in the Marshall Dock. Those vessels included the steamer 'Silloth', which had previously opened the Marshall Dock in 1859, the Silloth - Dublin steamer 'Caledonian', the Silloth - Liverpool steamer 'Albatross'

Lees Scar lighthouse, a mile or so south of Silloth, the ships returned in a line, wheeling in succession round the pier end and proceeded in through the Marshall Dock, led by the 'Silloth'. At 12:20pm, she entered the 'New Dock', as it was then formally named, breaking a ribbon held across the entrance by two young ladies, Miss Fanny Scott and Miss Nellie Middleton. Guns were fired from the bows of the 'Silloth', the 'Caledonian' and the 'Albatross' as they each entered the dock. The band of the Silloth Artillery Volunteers played 'Rule Britannia' from amidships on the 'Silloth'

A celebratory luncheon for the VIP's and invited guests was held at the Queen's Hotel, hosted by Mr Walter Scott, builder of the New Dock, whilst the workers who built the dock were treated to a 'knife and fork' tea.

In the evening, a 'Gala & Sports Event' was held in a field adjoining the Railway Station, attracting a large crowd. The sports events included 'Pole Leaping', a 'Handicap Foot Race' of 440 yards, a 'half-hour Go as you Please', (whatever that was), a 'Running High Jump' and an 'All-Weight Wrestling competition'. Other amusements involved 'Pitching with Old Coins', Waltzing and 'Back Shot at Aunt Sally.'

For an event that the dock owner thought wasn't worth making a fuss over, it all sounds to me to have been a very special occasion, quite elaborately organised and a great deal of fun!



New Dock excavations. Note in the background, the seafront pagoda (Still in existence) and Christ Church steeple under construction. The pines haven't been planted yet!

tidal Marshall Dock.

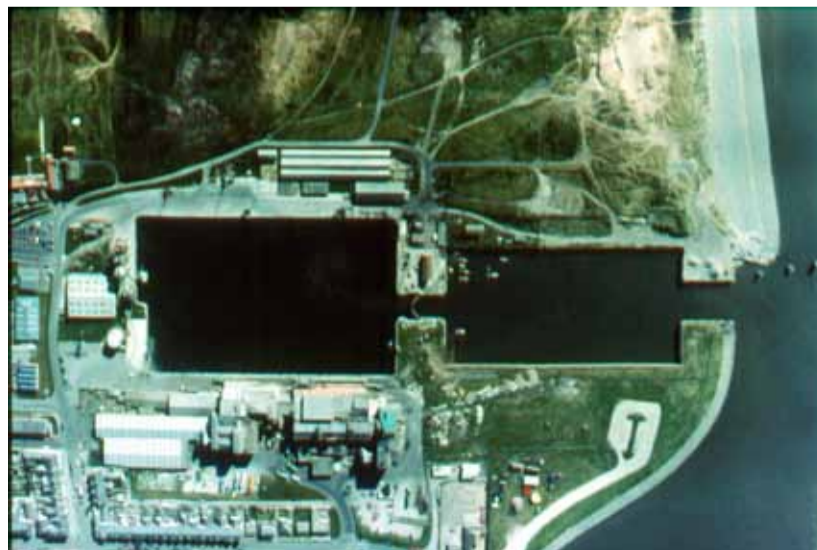
Excavation work began in May 1882, following plans drawn up by Messrs Meik & Sons of Edinburgh. The building work was awarded to Messrs Walter Scott & Co of Newcastle. This new dock would encompass a water area of six acres, being 400ft wide, with a length of 630ft on the northern wall and 660ft on the southern wall. The additional length on the southern wall would allow for a temporary timber cofferdam to be inserted at the eastern end of this wall, which could be broken through at a later date if there was a requirement to extend the dock system and provide extra quay capacity. (This was never needed and the cofferdam was eventually replaced by steel pile sheeting, still visible today). The dock walls were made of strong concrete, capped by granite cope-stones from quarries at Dalbeattie, Shap and Cornwall. A pair of dock

grassed leisure area alongside the 'Green', and liberally planted with pine trees.

In June 1885, the dock construction was nearing completion and on 19th June, the 'Carlisle Patriot' reported that on the previous day, preparations had commenced for the Opening Ceremony, which was due to take place on 30th June at noon.

Tuesday 30th June 1885 was a sunny and windless day, ideal for an elaborate occasion. Although the North British Railway Company had not intended

and the paddle tugs 'Arabian' of Silloth, the 'Florence' of Maryport and the 'Grace' from Workington. As soon as there was sufficient water on the rising tide they all sailed out into the Solway Firth. Taking a turn off the



An aerial view of Silloth Docks in 1990, showing the larger size of the New Dock compared to Marshall Dock, and the differing lengths of the northern and southern quay walls of the New Dock. The temporary wooden cofferdam to allow the dock system to expand if required, was located at the bottom right-hand corner of the New Dock.

Phone Book

This section recognises those whose financial help keeps us going. If you wish to contribute in this way without taking an advert, please contact the Buzz, it costs only £48 a year.

- | | |
|--|---|
| Abbey Cleaning Services
07732 270844 | The Wave Centre
01900 811450 |
| Addison Orthodontics
016973 32208 | Top 2 Toe Beauty Salon
016973 31591 |
| Allerdale & Eden Roofing Serv'
01900 813517 | Top Secret Roadshow
07736 774788 |
| Beacon Veterinary Centre
016973 20242 | Upholstery, Irene Armstrong
016973 31836 |
| British Heart Foundation
01946 418805 | Wallsend Guest House
016973 51055 |
| Callum Findlay gardener
07765 314597 | Wash Your Wheels
016973 32696 |
| Carrs Coaches
016973 31276 | West Silloth Motors
016973 32833 |
| Computer Problems
016973 32089 | Wheyrigg Hall Hotel
016973 61242 |
| D A Harrison
016973 42277 | Whinclose Firewood
016973 61273 |
| David Allen Accountant
01228 711888 | Winters Post Office
016973 31323 |
| David Read joinery
07759 783823 | |
| Digger Hire
07736 774788 | |
| Garden Services
07768 496313 | |
| Golf Hotel
016973 31438 | |
| Good Companions
016973 31553 | |
| Hair She Goes
07857 989358 | |
| Harrisons Store Ltd
016973 61231 | |
| J Scott Caravan Repairs
07823 440813 | |
| Jackie's Footcare
016973 32373 | |
| Jaybees
016973 31245 | |
| Julie Ross Plumbing
07805 045052 | |
| KL Express
016973 33033 | |
| KMG Plumbing & Heating
07590 522621 | |
| M & C Taxis
07917 564583 | |
| Markley IT Consultancy
016973 31276 | |
| Mike Jones Decorator
07842 355486 | |
| Mike Taylor Plumbing
07773 069856 | |
| No. 17 Delicious
016973 32458 | |
| Outdoor Joinery
016973 61256 | |
| Peter Farrier painter
016973 33039 | |
| Photography by Peter
016973 32180 | |
| Pink Poodle
07519 223364 | |
| PM Roofing Specialists
07931 362163 | |
| Queens B & B
016973 31373 | |
| Reem Nails & Beauty
07792 394916 | |
| Robinson Car & Commercial
016973 31940 | |
| Sandra Hickebottom foot health
07951 312513 | |
| Seasoned Firewood Logs
07762 772208 | |
| Silloth Cafe
016973 31319 | |
| S.O.S.C.S.
016973 32452 | |
| SeavorChartered
01228 492729 | |
| Slimming World (Denise)
07799 708465 | |
| Solway Private Hire
016973 32310 | |
| Solway Squirrel Group
01228 711520 | |
| Spar
016973 31293 | |
| Stanwix Park
016973 32666 | |
| Stephen Fraser Joinery
07809 870604 | |
| Steven Henderson Electrical
016973 31163 | |
| Stuart James Plumbing
07763 677752 | |
| Tanglewood Caravan Park
016973 31253 | |
| The Bookkeeper
07919 121575 | |
| The Charity Shop
016973 31696 | |
| The Lowther Bar & Restaurant
01900 881750 | |



Advertise
in the
Tradesmens
Section
only **£116**
for
ten issues

Useful Tel Numbers

- | |
|--|
| Age Concern Home Safety Scheme
01946 68986 |
| Chemist, Silloth: 016973 31394 |
| Community Bus Dave 016973 31785 |
| Com'ty Bus Lawrence 016973 31257 |
| Community Grants: 01900 325013 |
| Crime Stoppers: 0800 555 111 |
| Dental Emergency: 01228 603620 |
| Dentist, Buchanan: 016973 31270 |
| Dentist, Steel: 016973 32042 |
| Doctor: 016973 31309 |
| Doctor CHOC service 03000 247 247 |
| First Responders can only be called by the Ambulance service, call: 999 |
| Gas: 0800 111 999 |
| Highways Hot Line 0845 6096609 |
| Hospital: 01228 523444 |
| Holme St. Cuthbert School |
| Mawbray: 01900 881242 |
| Holm Cultram Abbey CofE School |
| Abbeystown: 016973 61261 |
| MP, Tony Cunningham: 01900 65815 |
| NAP 01900 702898 |
| Neighbourhood Forum: 01900 325013 |
| Police: 101 |
| Quakers, Wigton: 01228 523174 |
| Register Office, Wigton: 01228 221122 |
| Samaritans: 01228 544444 |
| Silloth Community School: 016973 31234 |
| Silloth Library 016973 31944 |
| Silloth Nursery & Junior School: 016973 31243 |
| Silloth Town Clerk: 016973 31128 |
| Allerdale B. Council 01900 702702 |
| Silloth Tourist Information Centre: 016973 31944 |
| Solway Buzz: 016973 32180 |
| Solway Private Hire: 016973 32310 |
| Vet: 016973 20242 |
| Waste Disposal Dept: 01900 702800 |
| Water LeakLine: 0800 33 00 33 |
| Please, let us know what you want included, also any changes to numbers. |

Silloth Albion Sunday Football Team

Report by: Colin Baty

Silloth Albion Sunday Football team have started the pre season early by playing four games throughout July in preparation to starting the season in the Workington and District Sunday League in Division One after being promoted last season.

After the tragic events of earlier in the year, we decided to have a memorial match in honour of Terence Satterthwaite, one of our and Silloth A.F.C's former players. It was held at Aspatria on the 4th of July and we played The Sun Inn of Aspatria winning the game 4-1, goalscorer being: Kris Nichol, Adam Carr, Ollie Carr and Paul Glencross. Terence's Mam, Dad, Brother and Sister all attended, with Brother Wayne, playing in the game.

A great crowd of around forty people came to watch and a fundraising box was passed around which after a Karaoke night in the Albion Inn afterwards resulted in £220 being raised for Silloth First responders, an excellent and kind gesture from all those that contributed.

The following week, Albion travelled to Workington to play The Vine Bar and after starting well we lost 2-1, a goal coming from Mark Glencross the consolation. We had a lot of players missing and the new and fringe players acquitted themselves admirably.

Then on the 19th July



Silloth Albion with the Satterthwaite family at Aspatria for the memorial match

Albion welcomed Carlisle Nation, managed by old Sillothian, Anthony Eland and were comfortable winners 5-0 with some excellent football being played, goalscorers being: Kris Nichol, Calvin Rowell, Dale Walker, Luke Graham and Mat Graham.

And on the 26th July, Albion entertained The Ship Inn of Thursby and after going ahead 2-1 at half time, both goals coming from Adam Carr, took their foot off the gas losing 4-2.

Still we are really looking forward to the season ahead and have been training since June every Tuesday and Thursday at 6:30pm. As of 10th September we will be doing training at Beacon Hill 3G outdoor pitch with floodlights on Thursday's at 6:30pm to maximise our preparation throughout the dark winter months.

I would also like to thank

the following sponsors for sponsoring Match Balls for the coming season which are always the biggest necessity: ENKEV, Fairydust Emporium, Balmoral Pub and Silloth Corner Cafe. Your sponsorship is hugely appreciated by everyone at the club.

The first home game will be on 30th August versus Broughton Moor Buzzards. Hope to see a lot coming to watch this season.



Tide Tables

SEPTEMBER 2015		SILLOTH							
Date		DEPTH ON NEW DOCK GAUGE							
		High Water				Low Water			
		Morning		Afternoon		Morning		Afternoon	
	Time	m	Time	m	Time	m	Time	m	
1	TU	00 52	8.4	13 19	8.0	08 11	-1.6	20 27	-1.4
2	W	01 38	8.2	14 04	7.6	08 54	-1.5	21 10	-1.2
3	TH	02 25	7.8	14 50	7.2	09 33	-1.1	21 52	-0.9
4	SA	03 13	7.3	15 39	6.6	10 15	-0.7	22 38	-0.4
5	F	04 07	6.6	16 37	6.1	11 01	-0.2	23 33	-0.1
6	SU	05 11	5.9	17 49	5.5	11 59	0.2		
7	M	06 32	5.4	19 13	5.4	00 45	0.2	13 17	0.4
8	TU	07 55	5.4	20 30	5.6	02 09	0.3	14 39	0.4
9	W	09 06	5.7	21 30	6.1	03 25	-0.0	15 51	0.1
10	TH	09 58	6.2	22 16	6.5	04 28	-0.3	16 46	-0.1
11	F	10 40	6.5	22 54	6.9	05 18	-0.5	17 30	-0.4
12	SA	11 14	6.7	23 27	7.1	05 58	-0.6	18 06	-0.5
13	SU	11 46	7.0	23 57	7.2	06 33	-0.7	18 37	-0.6
14	M			12 15	7.1	07 03	-0.8	19 06	-0.6
15	TU	00 27	7.2	12 43	7.1	07 32	-0.8	19 36	-0.6
16	W	00 57	7.1	13 15	7.0	07 59	-0.7	20 07	-0.6
17	TH	01 28	7.0	13 46	6.7	08 29	-0.6	20 40	-0.5
18	F	01 58	6.7	14 18	6.5	09 01	-0.4	21 12	-0.3
19	SA	02 30	6.4	14 52	6.2	09 33	-0.1	21 48	-0.0
20	SU	03 07	6.0	15 36	5.9	10 08	0.1	22 30	0.3
21	M	03 57	5.5	16 35	5.4	10 55	0.4	23 28	0.5
22	TU	05 06	5.2	17 56	5.3			12 03	0.6
23	W	06 39	5.1	19 22	5.5	00 49	0.5	13 33	0.5
24	TH	08 03	5.5	20 32	6.2	02 14	0.2	14 50	0.1
25	F	09 08	6.2	21 28	6.9	03 27	-0.2	15 56	-0.3
26	SA	10 00	7.0	22 17	7.5	04 29	-0.7	16 53	-0.7
27	SU	10 47	7.5	23 03	8.1	05 24	-1.1	17 47	-1.1
28	M	11 30	8.0	23 47	8.4	06 16	-1.4	18 37	-1.4
29	TU			12 13	8.1	07 04	-1.6	19 23	-1.5
30	W	00 30	8.4	12 56	8.1	07 48	-1.6	20 08	-1.4

Tide Tables supplied by ABP Port of Silloth
Times shown in UTC. Add 1 hour for British Summer Time.

Dredger in Silloth Docks



© John Forrester www.cumbriashippphotos.weebly.com

CHERRY SAND entering the port on its last day of the operation. It spent 10 days clearing the dock before departing on 29th July for Cardiff

SILLOTH CAFE

Traditional Fish & Chips

Sit-In or Take-Away
Special Wheat Intolerance Gluten Free Option
Pensioners Meal Deal: Monday – Friday
Closed Wednesdays
Station Road, Silloth, Tel: 016973 31319

SOLWAY RED SQUIRREL GROUP

working to promote the preservation of our native red squirrel population
You can help by reporting all sightings of red or grey squirrels to
01228 711520
marion.grave@hotmail.co.uk
Thank you



Big Bee & Little Bee
by Olivia Dixon from Silloth Primary School

THE CHARITY SHOP

(Good Causes, Silloth) Eden Valley Hospice
1 Queen's Court Marie Curie Cancer Care
Criffel Street North Lakeland Hospice at Home
Silloth Macmillan Cancer Support
Tel: 016973 31696
Contact: Denise Poland on 07736 386093
Closed Mondays Please help us to help them

DONATE YOUR FURNITURE AND ELECTRICALS

and we'll pick up your items for FREE

Your unwanted furniture and electricals can help us fight back against heart disease. We collect all sorts of items.
Call 01946 418 805 or book online at bhf.org.uk/collection



©British Heart Foundation 2014, registered charity in England and Wales (225971) and in Scotland (SC039426)



Chantelle & Mick Satterthwaite receiving the cheque on behalf of Silloth First Responders

KL EXPRESS Chinese Takeaway

Open at 5pm Every Day

A Wide Variety of Dishes for Every Taste

Telephone Orders
016973 33033
43 Eden St, Silloth

Sandra Hickebottom
MCFHP DipFHT MAFHP

Foot Health Professional

Flexible Home Visits
All Foot Problems Treated
Corns, Callous, Ingrown Toenail, Verrucae, Diabetic Foot, Nail Cutting
Fully Qualified and Registered For 19 Years
Mob 07951 312513



Solway Private Hire

advance booking essential
Airport Runs
Wedding Cars
Days or Nights Out
Car's to Minibuses Available

Tel: 016973 32310

www.solwayprivatehiresilloth.co.uk



Free Junior & Senior Football Training in Silloth



Silloth Football Club are back in full swing for season 2015/2016.

Training has now begun on Sundays at 11am at the Eden Street playing fields for 4 to 7 year olds, all boys and girls are welcome. Under 9's training is on Wednesdays from 4pm-5pm.

Mens training is on Tuesdays and Thursdays evenings from 6:30pm to 8pm.

We are always looking for new members, Please just come along, you will enjoy it and will always be made welcome.

Tour of Britain is Coming to Silloth

Following a successful and well attended town meeting, Silloth Inner Wheel Club and Silloth Rotary Club continue to lead the preparations for the Tour of Britain race that passes through Silloth on Tuesday, 8th September.

Preparations are well advanced and the team organising the day has set up some exciting events and celebrations for the whole day.

Maggie Dunn, president of Silloth Inner wheel club says, "we are aiming to make 8th September a day of celebration for the whole community. This is just about the last major event of the summer, so let's all get together and enjoy it."

Silloth is likely to be the best vantage point to see the Tour on the whole of the stage from Cockermouth to Kelso. With five sharp corners and its cobbled streets, the riders are likely to be riding at a pace which will give spectators an excellent view. As well as watching the race live, spectators will also be able to watch the race on a giant screen on Silloth green. Other activities will be going on in the comfort of a large marquee also on the Green.

Silloth schools pupils have taken quite a liking to Ralph the sheep, the town's mascot for the Tour of Britain race. In a summer school project funded by Cumbria County Council, Silloth schools pupils have produced some excellent giant cartoons with which to decorate the town. Naturally, the cartoons feature Ralph the sheep.

Also 1,000 metres of brand new bunting will add to the party atmosphere on



the day of the race and in the period leading up to it.

Later in the day there will be a children's film screened on the giant screen. Children will need to be accompanied by parents to meet the legislation around the safeguarding of children.

The excellent and popular local band, Zoe and the Boy will be providing some free live musical entertainment in

the marquee on the day. This is definitely not to be missed!

John Cook, President of Silloth Rotary Club, said "It's encouraging that the whole town seems to be coming together to enjoy this event"

Ralph the sheep, who is developing into quite a character, has challenged ToBi, the official Tour of Britain mascot to a cycle race. ToBi has accepted the



Above: two of the posters created by the kids, see lots more at www.sillothwheels.co.uk
Below: local kids hard at work on the posters of Ralph



challenge, much to Ralph's surprise. Ralph is now taking the contest very seriously and can be seen around Silloth training for the event - perhaps we should have called him Rocky. He has arranged a boot camp at which he intends to bring his fitness to a peak prior to the contest. Keep an eye out for him and give him a wave.

The Inner wheel and Rotary Clubs of Silloth are grateful to Cumbria County Council for their valuable help with the tour

preparations so far. Although much of the day is planned, we still have room for more activities, especially to involve children and young people. We would be pleased to hear from you with your suggestions and, hopefully, offers of help. You can email the organizing team on: events@sillothwheels.co.uk

You can keep abreast of how things are shaping up at www.sillothwheels.co.uk and on Facebook "Tour of Britain Comes to Silloth"

ROBINSON
Car & Commercial

24Hr Mobile: 07999 017769
Tel: 016973 31940

CAR - VAN - 4X4

Diagnostics
Repairs
Servicing
Body Work
Accident Repair

BUS - COACH - TRUCK - TRAILER

Diagnostics
Fleet Maintenance Contracts
Inspections
Servicing
Repairs

24 Hr Assistance
MOT Steam Cleaning
Mobile & Workshop Service
VOSA MOT Preparation & Booking

PLANT - AGRI

Mobile & Workshop Service
Servicing
Repairs
Breakdown Assistance

MOT'S ARRANGED CLASS 4 - 5 - 7
CAR & VAN RECOVERY SERVICE

The Control Tower, Silloth Airfield, CA7 4NS

top2toe BEAUTY SALON

Dermologica Facials & Products
Waxing & Tinting
Full Body Massage
Manicures, Pedicures & Shellac
Individual & Strip Lashes
Electrolysis, Collagen Bed, Sunbeds, Spray Tans
and many more (Gift Vouchers Available)

8A Eden Street, Silloth Tel: 016973 31591

West Silloth Motors

**Motor Vehicle Body Repairs
Diagnostics, Servicing & Recovery**

Causewayhead, Silloth, CA7 4JG
Tel: **016973 32833**
Free Vehicle Collection & Delivery Service

MOT TEST CENTRE
Cars, Vans & Motorhomes

**Wallsend Guest House
Wigwams® and Tea Room**



Four Star Silver rated bed and breakfast accommodation

Luxury en suite camping cabins
Tent camping available from £10pppn
Tea Room open daily April to October

Lyn & Andy Lewis
The Old Rectory, Bowness on Solway, CA7 5AF
Tel: **016973 51055** * www.wallsend.net

Bowlers to Represent County

Report by: Harry Parker



Silloth on Solway Bowling Club members have been chosen to represent Cumbria in the prestigious England Bowling Association Finals 2015 at Leamington Spa.

Those chosen are: Mens County Triples Winners: Ryan Orchard, Adam Hocking and Paul Wallace {skip}. This is two consecutive years they have achieved this.

Also Two Wood runner-up Paul Wallace.

Ladies County Triples Winners: Angie Whiting, Glynis Halliwell and Sandra Parker {skip}.

Pairs runner-up: Joyce Edwards and Sandra Parker {skip}.

Senior Pairs Winners: Angie Whiting and Sandra Parker {skip}.

Congratulations to them all and good luck to you all in the finals.



Top L-R: Paul Wallace, Ryan Orchard and Adam Hocking
Bottom L-R: Glynis Halliwell, Angie Whiting and Sandra Parker



Silloth Rugby Club Needs You!

Silloth Rugby club, achieved being both the League and the League Cup winners in the 2014-15 season. This is unprecedented for the team, club and town of Silloth.

It is an achievement that has taken the Club and the team to new heights, including promotion to the north Lancashire and Cumbria League. The success of the team has raised the profile of both the club and the town of Silloth. Not only has the standard of player risen to new heights but a number of Silloth players have also represented Cumbria at Twickenham this season, the home of English Rugby Union.

Going forward into the 2015-16 season will bring



Photo courtesy of Cumberland News

Silloth Tigers celebrating winning the Cumbria Cup at Cockermouth

new challenges, requiring commitment and dedication from the Club. These new challenges will also have a financial impact on the club and we would like to offer you the opportunity to become part of our new

adventure. By sponsoring the team you will help raise your profile within the town and also make your business known outside of the area.

What you can sponsor:
Match Ball: £50 per game.

Match Sponsor: £100 per game (plus £7 per head for food).
New Advertising Banner: (First year) £140.
For further information please call Steven Mattinson on 07768 688 787.



Open All Day

Love to Lunch
Monday to Saturday
12-2pm

Fantastic Value
at only £6 per person
add a sweet for just £2.95

- Breakfast
- Morning Coffee
- Lunches
- Traditional Sunday Carvery
- All Local Produce
- Evening Meals



Sunday Carvery 12-2pm

Main course £9.95
Two courses £12.95
Three courses £15.95

016973 31438

www.golfhotelsilloth.co.uk

£48 WEEKEND TICKET ON SALE NOW


FROM THE JAM SATURDAY

The Silloth Music Beer Festival 2015
CELEBRATING OUR 15th YEAR


THURS 10th - SUN 13th SEPTEMBER 2015

GREAT BANDS, ALES & CIDERS TO CELEBRATE 15 YEARS


SEE REVERSE FOR FULL WEEKEND LINE UP



GREAT DEALS ON TICKETS & ACCOMMODATION PACKAGES



THE REAL THING
FRIDAY

SILLOTHBEERFESTIVAL.CO.UK  

Silloth Music & Beer Festival reserves the right to change advertised band listing. Check website for full festival details.

The Silloth Music Beer Festival 2015
CELEBRATING OUR 15th YEAR

WEEKEND EVENT LISTINGS

Thursday 10th September 7pm - Midnight
HIGHLY STRUNG
HEARTBREAK REMEDY | SIDETRACK
Tickets £10*

Friday 11th September 7pm - Midnight
THE REAL THING
HOLBORN HILLBILLIES | THE FICTION
Advance tickets £20 or £22 on the door*

Saturday 12th September 12pm - 5pm
MISS CINDEY HOTEN BAND
HOOCHIE COOCHIE MOONSHINE BAND
LUKE MATEAR
Tickets £8 for Adults or £10 on the door

7pm - Midnight
FROM THE JAM
OASISH | AWOL
Advance tickets £20 or £22 on the door*

Sunday 13th September 1pm - 6pm
STEREOTONICS
SUPERFLY | BROKEN ENGLISH
Advance tickets £9 for Adults or £11 on the door*

*subject to availability
Children are welcome with responsible adults on Saturday and Sunday Afternoon.

Tickets Available From
Carnegie Theatre, Workington 01900 602122
Winters Newsagents, Silloth (Cash or cheque)

www.ticketweb.co.uk
For accommodation enquiries contact
Please note that as this is a Beer Festival admittance after 7pm is strictly limited to over 18's.
Proof of age may be requested.

Silloth Music Festivals Ltd. Company No 8680036