



Solway Buzz

Agent B
by Tommy Reid from Silloth Primary School

www.solwaybuzz.co.uk

Feb/May 2021

local news - for you - by you - about you - free to you

FREE PAPER

Issue 188

Well Done Alex & A Generous Community

Nurse Alex said "My aim when putting out the original appeal was to collect enough essential toiletries to donate to a single ward in the Cumberland infirmary.

With the complete dedication of the community all the donations collected were enough to send one large crate of supplies to not only every single ward in the hospital, but also our local community hospitals and some local care homes. A total of 24 large crates were supplied.

I would like to say a huge thank you to Gary Winter of Winters Post Office, Paul Blake of Jaybees and every member of the community who donated. Its been an amazing outcome and something I was not expecting at all.

Again thank you for all your support, as a nurse I know how much this was appreciated by the staff working tirelessly during this pandemic.



Nurse Alex Reay

Page 3
Angela bakes up a treat



Page 6
Friends of the Green



Page 10
Flowers for a princess



Pages 11
Lowther Arms success



Page 13
Alyson takes over from Lynn



Page 20
Michael Aird football report



David Allen

Carlisle | Dalston | Dumfries | Penrith | Workington

- Accountancy
- IT Solutions
- Tax Consultancy
- Debt Recovery
- Financial Services
- Employer Services
- Agricultural Services

01228 711888 • www.david-allen.co.uk



New Vehicle for Silloth RNLI

Report by:
Julie Emary
Silloth Lifeboat
Press Officer

Silloth RNLI took delivery of their new (workhorse) vehicle on Thursday 4th February 2021. It is a Mitsubishi L200 and has been given to Silloth after spending time as an RNLI lifeguard vehicle on beaches in the North West.



The purpose of the pickup primarily, is to transport necessary equipment and crew to the West Beach when launching and recovering the lifeboat from that area.

It will also greatly assist the

lifeboat fundraisers in Silloth, to carry the RNLI marquee and goods round to different sites when they have their pop up shop at local events, in and around the local area.

Marked with smart RNLI

livery, the pickup will also be a useful aid with safe traffic management through the town, when the lifeboat is required to be launched from West Beach, particularly during the busy summer months.

Decorations Raise £100



During December Maureen Hind was busy making various fresh Christmas table arrangements for sale with the profit going to Silloth RNLI.

Maureen would like to thank everyone who bought one and therefore supported this worthwhile charity.

She would particularly like

to thank Gary at Winters for allowing her the space to display them in the shop at no cost, what a star.

A cheque for £100 has now been sent to the Silloth RNLI Treasurer and it would be nice to try to do the same again next year.

Many thanks to all who supported her efforts.

Mawbray Village Hall

The first thing we plan to organise at the hall, when the virus situation is all over, is to open up the hall to everyone to have a big family social event to bring us all back together. Perhaps even a BBQ. Let us have your ideas.

All our regular groups are raring to be back at the hall, new members are always welcome to come and join us.

Jill Chester's Various Exercise Classes

Indoor Bowling Club
Tai Chi with Anne Connolly N.I.A. (gentle aerobic exercise)
Fortnightly Craft Club
Monthly Quiz
Monthly Film Club

The village hall has in recent times been completely refurbished and is ideal for a lot of different types of social functions and clubs.

One idea that we are considering is a monthly Pool Club. We have been donated a full-sized pool table, so if you would be interested in this let us know.

If you have thought about starting a club please contact us regarding

our very reasonable hire charges. For any information or enquiries contact: Brian on 01900 881737
Mobile 07542 781234
Lynda on 01900 881737 Mobile 07926 810074. Email: info@mawbrayvillagehall.org.uk



Clumsy Bee
by Stuart
from
Holme St Cuthbert School

RNLI Callout

Silloth RNLI lifeboat was paged at 10:17 on Monday 18th January by Belfast Coastguard to assist Police Cumbria with an incident on the promenade.

After a brief discussion with the Police, it was decided that the lifeboat crew could best deal with the situation on foot along the shoreline and therefore the lifeboat boat was not launched.

The incident was swiftly dealt with by the crew and everything was resolved in a safe and secure manner.

Message from the Editor

The past year has been very difficult for everyone with the impact of Covid-19 affecting every aspect of our lives.

As many of our volunteers are elderly we decided that we could only produce and distribute the Solway Buzz when it was safe to do so. This has meant many fewer issues than normal but at least we are still here.

I would like to thank the contributors who continue to send in articles, this issue covers events going back to late last year.

Especially a big thank you to all the advertisers, all of whom paid in advance, and nobody cancelled their adverts - wonderful.

Without your support there would not be a Solway Buzz.

West Silloth Motors

Motor Vehicle Body Repairs
Diagnostics, Servicing & Recovery
Aircon Service Now Available

Causewayhead, Silloth, CA7 4JG, Tel: **016973 32833**

Free Vehicle Collection & Delivery Service



MOT TEST CENTRE
Cars, Vans & Motorhomes



Devonshire House
Denture Solutions Ltd



New Dentures Direct | FREE Consultations
Economical to Premium Range Dentures
All work carried out by the Clinical Dental
Technician in the Denture Clinic

Tel 01228 529128

Devonshire House Denture Solutions, 51 Spencer Street, Carlisle, CA1 1BB
www.devonshirehouselab.co.uk

Slimming
-WORLD-

because you're amazing

**Meet Loretta on
Saturdays in
Silloth Rugby Club**

Because of Covid-19 you
must phone first to book
a session time

Contact: **Loretta on
07766 118556**

Take Your Litter Home!

YOUR LITTER IS YOUR RESPONSIBILITY

“Lots of little things done by lots of little people can and will make a difference!”

Report by: Norman Foster

Having spent a lot of time walking on the roads around Abbey Town over recent months I am appalled by the amount of litter which can be seen on the roadsides, in the hedgerows and gutters. The main offending articles being drinks cans, drinks bottles (plastic and glass) and takeaway food cartons, it would appear that most of it has been thrown out of car windows.

The bulk of the items should be going to be recycled; helping to save the planet and the rest should simply be put in the bin, not a difficult task.

If you can take it with you when it is full then you can surely take it home with you when it is empty and dispose of it in a civilised manner. The ironic thing is that most of the cans are energy drinks (Red Bull and the likes) yet these supposedly energised people do not seem to have the energy to carry their litter to the bin.

Many roads around the area have been flooded recently, then the frost arrives, ice forms and then the roads become dangerous. The floods are being caused due to the litter blocking the gutters and drains; so, in fact, the people

driving the vehicles and throwing their litter out are creating problems for themselves.

If you are like me and dispose of litter in a civilised manner then well done to you, keep doing the right thing.

If you are reading this and know you are a cause of the problem, please do us all a favour and change your habits. If you are a parent, please carry out your parenting duties properly and educate your children to dispose of litter in a civilised manner.

There is no reason why anyone on this planet should have to pick up other people's litter

Together we can and will make a difference.

FIND A BIN TO PUT IT IN!



Photo by: Sarah Keaveney

Hot but Not Cross



Report by: June Anderson

Angela Hoodless has broken her record for the most Hot Cross Buns baked in a single day at

Solway Community School.

It is her last batch as she retires in July.

They are delicious.

Cumbria Libraries Re-Open

In line with the lifting of government restrictions on 12th April, all of Cumbria's six main libraries and most branch libraries will be open with revised opening hours, providing a Covid-safe environment where there really is something for everyone.

This means that book browsing, borrowing and returns will be available as well as the key services that they have continued to deliver throughout lockdown - select and collect, online services and home delivery services. Other essential services can also be accessed at your library, including adult education courses and registrars.

For digital access to services we are asking customers to book in advance for access to computers to ensure the best and safest service possible.

Please check the council website for details of opening hours and available services at your local library at www.cumbria.gov.uk/libraries. Our libraries have been COVID secured to ensure the safety of both our staff and customers.

Silloth Library hours are:

Friday 9:30am to 12pm and 1pm to 4pm

As well as our libraries services, Barrow, Carlisle, Kendal and Whitehaven Archive Centres re-opened to the public on Wednesday 14th April. The new opening times are Wednesday to Friday from 9:30am to 1pm. Due to the Covid-19 situation those wishing to visit an Archive Centre will need to book an appointment. We also ask that you pre-order your document requests. For more information visit <https://cumbria.gov.uk/archives/whatsnew>

Cllr Deborah Earl, Cabinet Member for Public Health and Local Communities, said: "Once again, I'm so excited for our doors to reopen and welcome our customers back as I know just how much everyone has missed their local library. The safety of both our staff and customers remains our priority and our teams have been working extremely hard to ensure all safety measures are in place for the safe return of our customers. Although not all our usual activities will be available, there will still be plenty of resources available for our customers and

book lovers to enjoy. It has been a challenging time and I can't thank you all enough for your patience and understanding. Keeping ourselves occupied and healthy is vital during this time so this is the perfect opportunity to visit one of our much-loved library buildings, whether it be to browse our collection of books, open your mind to new courses or even just for a nose! It's great we can open all our main libraries and archive centres. Please check the website to make sure you are familiar with all the new advice regarding libraries and plan your visit in advance."

Remember – you can join the library, search the library catalogue, renew and request books online at cumbria.gov.uk/libraries Visit Silloth Library in the Discovery Centre

Jinx gone but not Forgotten

Since Jinx was well known in Silloth, I am sad to share this news with you all!

From going into Spar Silloth, to sitting outside the ice cream shop in the summer, to going into the Golf Hotel, to keeping everyone on their toes in Wampool Street by climbing trees and sitting in the middle of the road. Before Christmas we got the news that Jinx had unfortunately got cancer and because of her age (15) we decided not to have treatment.

Today, was the day we had to say goodbye. You had fought well but watching you struggle was just not an option!

You have been such a character and most of the time drove me mad! Always getting a call or message to say "Jinx is up a tree

again" you were always up to something!

You have shown you were made of strong stuff when you were hit by a car, got up and walked off, to drinking bleach.

You will be sadly missed, and Kit is already lost (even though you hated him and hit him everytime you walked past him) Goodnight Jinxy.



Lifeboat Search for Missing Person



Report by: Julie Emary
Lifeboat Press Officer

Silloth RNLi lifeboat was called out in the early hours of Wednesday 31 March 2021 to search for a missing person between Redkirk Point and Brow Houses, not far from Gretna.

The lifeboat arrived on scene at 02:46 and began searching both the

shoreline and the sea. Maryport, Annan, Portling and Burgh Coastguards were also involved in the emergency.

The search was called off at 03:05, when the missing person was found safe and well.

The RNLi lifeboat returned to station and was made ready for service again by 03:45.

In Memory of Mary



On behalf of the family of the late Mary Fraser.

We would like to thank you all for the kind donations at Mary's funeral, in total £803 was raised with great help from Johnny Martin.

With the money we purchased six tablets and 130 ear phones which have now been donated to Reiver House, Carlisle Hospital where Mary had her treatment.

Can You Help?

Help needed to answer some questions about fishtraps and rock armour on the shore:

On the shore off Mawbray are lines of stones - triangles, squares, straight lines - that are probably the remains of fish-traps.

Does anyone know how old they are?

When they were last used?

Any information would be gratefully received! There's an aerial view of them on the website for my book about the Solway: see <https://thefreshandthesalt.co.uk/chapter-eight/>. Please do get in touch with me through the contact form on the website if you can help.

Also, the big (and little) blocks of limestone used as rock armour on the west side of GrunePoint.

Can anyone tell me when they were put there, where the limestone came from (eg which quarry), who brought it, please? (I'm researching uses of limestone.)

Again, please use the contact form on www.thefreshandthesalt.co.uk. Very many thanks, Ann Lingard

In Memoriam Notice

Terence Satterthwaite died six years ago and his mother Sandra died three years ago.

They are both being missed by everyone, especially James.

Thanks also to Tina for being a very good friend to all the family for the past seventeen years.



FIONA'S Footcare

Qualified Foot Health Practitioner

Fiona Atkinson
BSc, DipCFHP, MPSPract

Clinic or Home visits dealing with foot and nail care,
Callus, Corns, Fungal nails,
Ingrowing toe nails,
Diabetic foot care

Tel: 07704 484287

Evening: 016973 42688

JayBee's

6 Free Range Eggs £1 * Bacon £1 a pack
Pizzas from £1 * 1kg bag Oven Chips £1

Toys • Off-Licence • Hardware • Gifts

Key Cutting • Carpet Cleaner Hire

Watch Batteries & Straps Fitted

Frozen Fishing Bait • Hooks & Weights

open 7 days a week

6 Criffel Street, Silloth, Tel: 016973 31245

Carers Wellbeing Videos

Take some
time for
you!



It is vitally important that carers take care of their own health and wellbeing, as well as looking after the person that they care for.

We know that COVID-19 has intensified the stresses that carers deal with every day so we would like to encourage them to take a short break, and learn a new technique to relax and recharge, with one of our Carers Wellbeing videos.

Jacqui, who created the videos, describes them here: "Like many of us, all my work came to a grinding halt due to Covid-19, but I've been continuing my teaching online and I've also created these short videos in the hope that you'll get some benefit from them during this often stressful time we're living through right now. They

combine a variety of disciplines e.g. yoga, mindfulness, Qi Gong, Emotional Freedom Technique, and are designed to help you be more present and to cope with the whirlwind of thoughts we often get caught up in (i.e. possible anxiety about the future, or a bit depressed when we think about the past?) They're all around 15 minutes long, so won't take up too much time if you want to give them a go and give your mind a little holiday for a while. Hope you enjoy..."

The series of six videos are available on the West Cumbria Carers website at www.westcumbriacarers.co.uk/media-gallery/wellbeing-videos/ - a great excuse to take a short break from your caring role and carve out some well-deserved YOU time!

AMC

**SCRAP METALS LIMITED
SILLOTH CUMBRIA**

FULLY LICENCED AND FULLY INSURED
METAL MERCHANTS

BUYERS OF ALL SCRAP METALS AND MACHINERY

**CONTAINER SKIP SERVICES AVAILABLE:
FACTORY CLEARANCES**

GARAGE CLEARANCES

SITE CLEARANCES

HOUSEHOLD DOMESTIC COLLECTIONS AVAILABLE

**WE WANT YOUR SCRAP METALS
TOP PRICES PAID**

TOP SERVICE OFFERED

JUST TELEPHONE: 0774 2221222

For Service

Reg Office:

Harbour Cottage

Lawn Terrace

Silloth CA7 4AW

Tel: 016973 34296

Yard:

The Control Tower

Silloth Airfield

Silloth CA7 4NS

Tel: 0774 2221222

Memories of Silloth During the 40's, 50's & 60s

Report by: Pauline Stewart

This is a piece I wrote in memory of my childhood in Silloth and my early working life. Incidentally I did, with many others go to Ian Bell's silent film shows during our childhood and we really enjoyed the treat of watching the films.

The town was small, a census showed about 2,000 people.

There was a government Maintenance Unit that was the main employment to the town. Its roll was to repair aeroplanes during the war. The RAF was also there as well as the civilians who worked on the planes.

Also, there was a Flour Mill that is still there today. Built in

Victorian times and it stands by two docks that lead into the Solway Firth. The dock area then was full of fishing boats and enough fish in the Irish Sea to keep them all out in the open waters. Boats would come into the docks from Holland and Scandinavia to bring Wheat and Grain for the flour mill. Boys in those days would jump off the side of the dock at full tide in the summer to cool down.

The Railway Station was close to the Docks for obvious reasons. Steam Trains used the track to travel the 22 miles to Carlisle. They took goods and passengers every day of the week to the city. There were lots of stops on the journey at the small villages en-route.



This was our main source of transport. Buses would take you to Wigton with a change there to continue to Carlisle. Also a bus would take you along the coast road to Allonby then on to Maryport. All transport was public. A butcher or bakers van, wagons with coal or lemonade, even a horse and cart bringing fruit and

vegetables to our doors, but never a car.

We had two small factories, both trained women, on sewing machines, cutters, checkers and packers. We had a union that we all subscribed to with a union leader who would take issues to the boss of the factory and work towards a satisfactory outcome. The hours worked were 40 a week, 8am until 5pm, one hour for lunch with 10 minute break in the morning and 10 minutes in the afternoon. Once trained the machinists worked on

a piece rate.

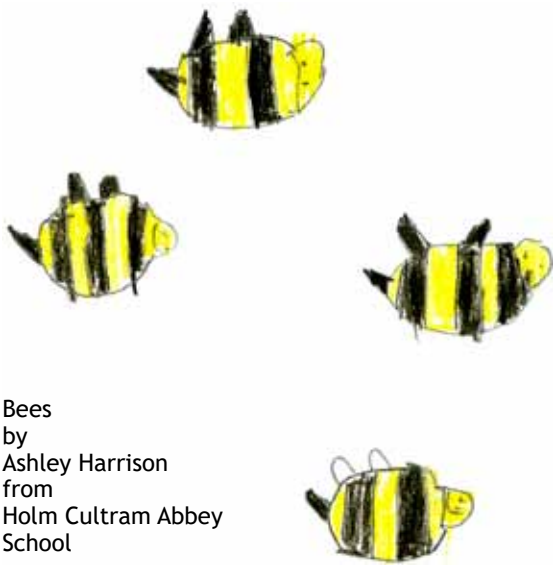
The town had a number of hotels as it was a seaside resort. People came from all over the country during the summer when the factories closed down for their two week break. Work was seasonal at the hotels during the summer months but enough work for all. Part time work for women fitting in with children's school time.

A links Golf Course was one of the best in the country with golfers still choosing the course to this day.

The sea air and healthy climate filled the Convalescent Home with patients from all over who were recovering from illness.

Farming surrounded the town with family run farms. The countryside was on everyone's doorstep. The children had a field day.

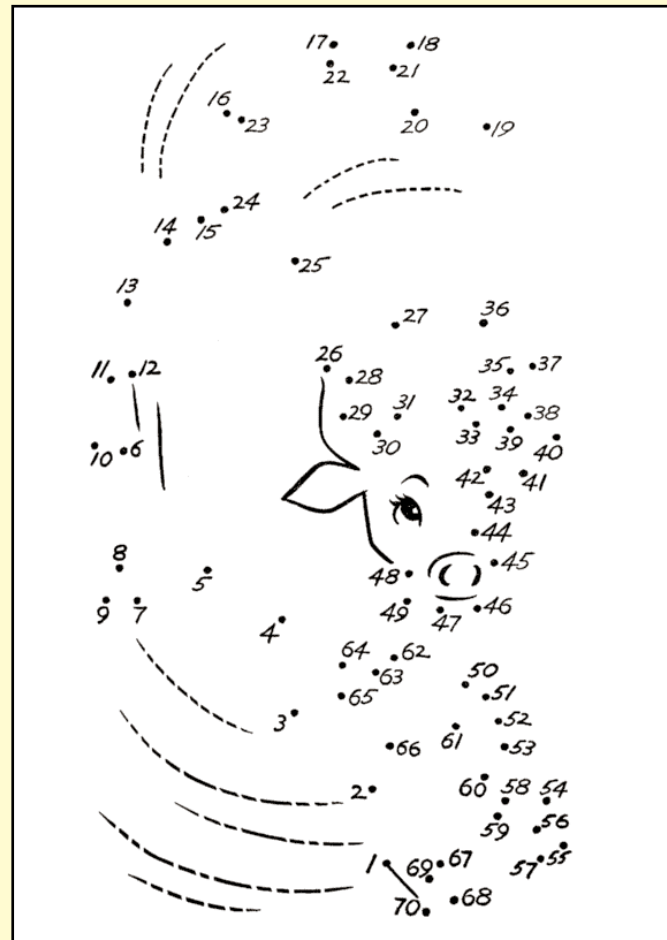
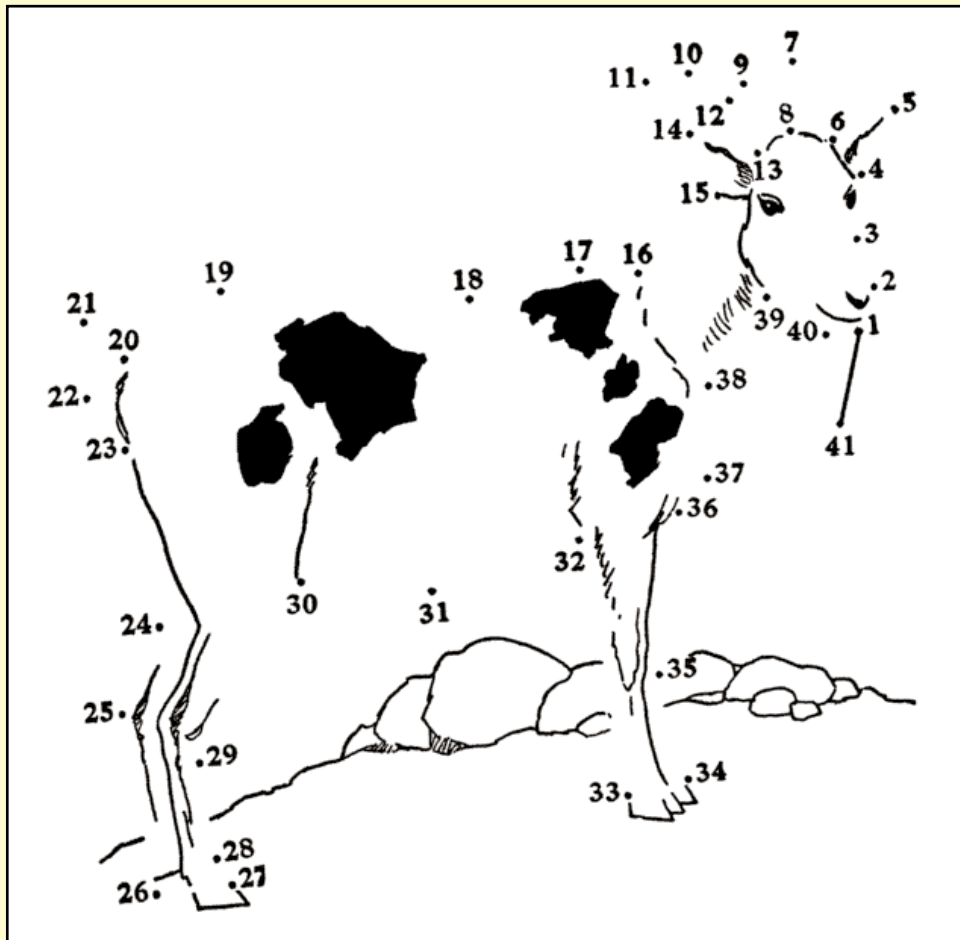
This was life in a small seaside town in Cumberland in the forties, fifties and sixties. Not so long ago but how things have changed. New industry has come in place of what was there before.



Bees by Ashley Harrison from Holm Cultram Abbey School

FUN for ALL ~ Join the Dots & Colour In

Everyone Can Do This



Not Just for the Kids

Spring-ing Forward with FOG

Do You Remember?



Report by: Graeme Aiken

As Spring has, apparently, turned to Summer and The Friends of Silloth Green are looking forward to getting back to some form of normality after a difficult few months.

Most importantly we are delighted to welcome back our esteemed Treasurer and "Driving Force" - Carol Doran. As you may have seen in the local press Carol has had a life changing time after contracting Covid-19. Infections and blood-clots caused by the virus meant that Carol had to have a leg amputated. We are amazed, (but not completely surprised), that this unthinkable event has not in any way dimmed Carol's inimitable spirit and it is with great relief that she has been able to return home and carry on with her amazing work with The Friends.

One project that is now even more important for Carol is the building and planting of Raised Flower Beds, Carol said "I want people to know that we will make the Green for everyone, no matter what disability you might have, we now have an even greater understanding of the importance of that".

The Raised Beds project is going full steam ahead thanks to incredibly generous grants of

£5,500 from Cumbria County Council and a further wonderful grant of £2,500 from the Robin Rigg Community Fund.

Friends of the Green have also raised an amazing £895 from the Winter Cheer Stall on the Green - special thanks go to Judith Scott and Ann MacKenzie for all their work in making this happen and to all those who generously purchased items from the stall.

In addition, £600 has been received from the Co-op community fund. Don't forget that you can still nominate The

Friends of Silloth Green as your chosen charity to received local community funding from the Co-op for another 6 months.

All of this brilliant fundraising means that we can now complete plans for both the Raised Beds and the new Water Fountain - complete with doggy trough - both of which will be amazing assets for the Green.

Meanwhile, we are also delighted to announce that the Fairy Trail will be returning as soon as possible, (subject to Covid-19 restrictions of course!), plans are well advanced to have everything ready with new Fairy Doors and Maps in time for the return of visitors over the Summer months.

Finally, we are hoping that the regular Volunteers sessions can re-start in some form - subject the "Rule of Six" - but our priority remains keeping everyone who volunteers safe. Keep an eye on our Facebook page for further information.

We are all looking forward to a more "normal" Summer and can't wait for everyone to be able to enjoy our wonderful Green - until then, thank you to everyone who continues to support The Friends of Silloth Green - keep safe and we'll see you soon!



Isabel Leggett worked for Mr & Mrs Ingall who had the Silloth Chemists on Station Road during the 1950's. Isabel was the daughter of Mr & Mrs David (Scotty) Hodgins.

Tree Proverbs

Proverbs about the tree:

- Great oaks from little acorns grow signifying from little things great things grow.

Weather prediction for the year when spring foliage appears.

- Oak before ash, in for a splash. Ash before oak, in for a soak.



During a thunderstorm - Beware of the oak, as it draws the stroke and avoid the ash as it counts the flash. Best creep under the thorn as it will keep you from harm.

DO YOU HAVE AN OLD PROVERB TO SHARE?

Wheyrigg Hall Hotel

Real Food & Good Ale 7 days a week

Friday Night*
from 6pm
Steak Deal
from £10.50

Re-opening May 17th
National
Sunday Lunch
All Day

Food served
Noon to 8:45pm all Week

Tel: 016973 61242

WHEYRIGG, ABBEYTOWN, WIGTON, CA7 0DH

Green View Guest House

Stella's Bistro

Open
Wed to Sat
6pm to 9pm

Re-opening May 17th



Bed & Breakfast
Sea Views

All rooms en-suite
Evening Meals
Bicycle storage
Free parking

6 Park Terrace, Criffel Street, Silloth, Wigton, CA7 4DQ

Tel: 016973 31743

E-Mail: greenviewsilloth@yahoo.com

TECHNOLOGY PROBLEM?

Mark Hansford
Computer Services
016974 38250
07962 213527

Your local specialists

Internet, WiFi, E-mail
or Printer?

Software Installation and
configuration

TV, Mobile or Home Tech?

No Problem

The Gospel Van

Report By: Carol Matthews (nee Williams), Lancaster

My childhood years were spent in Silloth and although I have lived away for many years the town still has a special place in my heart and so it was with a sense of nostalgia and surprise I came across Joan Bennett's poem "The Gospel Van" in the Dec/Jan issue of Solway Buzz.

I thought I could perhaps add a little more to the history of the Gospel Van for the benefit of those readers who may remember its presence on the Green.

Between the two world wars a Christian outreach had existed to "serve the spiritual needs of Cumberland and Westmorland" and in 1947 a van was purchased to facilitate this. John Knight (Uncle John) was called to work throughout the two counties mainly in the villages and rural areas.

Certainly I remember him coming to Silloth in 1953 and a long association with the town and surrounding villages began.

Although working under their own auspices The Gospel Van team were welcomed by some local churches and in particular the Silloth Mission now the Silloth Evangelical Church. (I think this may be the

chapel Joan refers to.)

John Knight was joined by Philip Widdison (Uncle Phil) and they were a wonderful team. Phil, a talented musician with his ukelele and Hawaiian guitar accompanied the choruses sung with great enthusiasm by the crowds of children present. (My husband at that time a school boy in West Cumberland remembers some of these being sung on the school bus journeys from Frizington to Whitehaven!)

John was a skilled artist and his talks and illustrated Bible stories, flannelgraphs, quizzes and memory verses were listened to with rapt attention.

John and Phil were also dedicated in helping young men in evangelistic enterprise and over the years many joined the team in the summer holidays and some did go on to become leaders and youth workers in their own churches and further afield.

In retirement, John, a Londoner, settled in his beloved Cumbria concentrating on his Christian Radio Outreach work which continues to this day and overseeing the work of the Gospel Hall in Penrith.

As a family we kept in touch and John conducted both my parents' funeral services making mention of the great hospitality and suppers my mother provided. I have lovely memories of a full house and lots of laughter on these occasions.

When John died aged 90 years in 2009 it was our privilege to attend his funeral and pay tribute to an incredible lifetime of Christian service and also to renew memories with others who had stood on Silloth Green all those years ago. It is our collective prayers that the seeds sown in children's hearts went on to bear fruit setting them on their own lifetime journey of faith.

Park Terrace, Silloth c1861

Report by: Graeme Aiken

The contribution of Jonathan Dodgson Carr to the town of Silloth is well known through the Flour Mill that he founded in the town to provide flour for his biscuit factory in Carlisle. What may be less well known is his investment in the building of the town.

One example is what is now Park Terrace which, in 1859, (the year the Port opened) was developed by a group of investors including Peter James Dixon, (as in Dixon's Chimney and Shaddon Mills in Carlisle) and one Jonathan Dodgson Carr, "Biscuit Manufacturer of Carlisle".

The plot was valued at the princely sum of £301.12s 6d on the 4th of June 1859.

Much of the indenture



detailing the transaction is now illegible, but one stipulation is that up to seven "dwelling houses" are to be built within two years of the date of transfer - permission does appear to have been granted for the Queens Hotel to be built rather than a "dwelling house" - but that

does help to date the photograph here to before 1861.

I'm grateful to the Silloth History Group for unearthing this amazing picture which shows Park Terrace standing alone, presumably while the rest of the town was still being built!

Silloth Community Hub

Last year, Silloth Community Hub was born out of a wish by a group of local business women to provide food, during half term, for the children who usually receive free school meals. They came together with other local businesses - Silloth Cafe, Jaybees, Berry's Bakery, KL Express, the Fairydust Emporium, Paramount Amusements, Alison's No. 17 and the Fruit & Veg Box Company, as a collective. They joined forces with Julie Wedgwood from Rural Regeneration, who has set up 60 similar projects across Cumbria, and created a supply chain to stock a shop in the town.

This is something that continued to grow in to what we see today.

The Hub buys food that is surplus stock from major supermarkets/suppliers, which would otherwise go to landfill, from a national organisation called FareShare. Preferences can be indicated but it's not known, week to week, what will be received. Along with other food donations from local people, Silloth Co-op,

Morrisons at Penrith and others, it tries to offer good quality for visitors and payment for their shopping is made via donation - the policy is to take what you need and pay what you can afford. The more that shoppers are able to pay, the more that this initiative can help individuals and families who may be finding things difficult at this time.

The majority of products are not priced, it is left up to customers to decide how much they think their shop is worth and donate accordingly.

The project has received overwhelming support, which is ongoing, from individuals, local businesses and Allerdale Borough Council - grateful thanks is extended to everyone involved. Baxter's kindly let the shop rent free to the New Year, Jaybees



helped with display shelving, Mark Ware from MW Joinery Solutions built a glass screen, Silloth Rotary Club supplied a hand sanitising station and Abbey Cleaning Services have kept

the shop front windows sparkling. Carr's Mill, West Silloth Motors, Pearsons Building Limited, Silloth on Solway Community shop, the Millburn family and others also gave cash donations to further supplies.

Thanks also to members of the Silloth RNLI crew who have helped several times with various maintenance tasks. Many have shown such generosity and appreciation is always shared via the Facebook page.

As restrictions ease, it is recognised that there is a very real need to keep the Hub operating so that it can continue supporting the whole community including the care homes and schools.

You can help make a difference just by coming through the door as every penny contributed keeps it running - ALL are invited to use it.

Silloth Community Hub can be found at 21 Eden Street, open on Tuesdays from 5-7pm, Wednesdays/Thursdays from 10am to 2pm and run by a wonderful team of volunteers ready to welcome everyone.

The Queens Bed & Breakfast

En-suite rooms
Sea Views ~ WiFi

Call: 016973 31373
Mob: 07753 859403

Re-opening May 17th
email: gamus@gmail.com
web:
bedandbreakfast-silloth.co.uk

1 Park Terrace
Silloth, CA7 4DQ

THE GOOD CAUSES CHARITY SHOP

1 Queen's Court, Criffel Street, Silloth
Contact: Denise Poland on 07716 507453

Closed Mondays

Please help us to help them

S.O.S.C.S. Silloth on Solway Community Shop

* Local people working for local causes *
* All proceeds go back into the community *
* Please continue donating *

Open every day
10am to 3:30pm
Tel: 32452



S.O.S.C.S.
12 Criffel Street
Silloth



Valentines Bee
by Isabella Hayes
from Holme St Cuthbert
School

Mike Says the Stank at Abbeytown is Icy but Good!



Many people still remember the devastating winter of 1946/7 and then again in 1962/3 when we had the coldest one for 200 years.

WELL, suddenly, after flooding in early February, followed by five days of heavy frosts....SHAZAM!, Abbey Town had its own Ice Rink on The Stanks.

Now, not wishing to miss the opportunity, at 10am on Saturday 13th February, Michael Faulkner decided to test it. After much stamping and jumping up and down tests, it was declared safe.

Now, bearing in mind, the last

time he tried this was in January 1982 when Worcester County Cricked ground was flooded before a big freeze. Where he towed his two sons around on their sledge.

No, its not quite like the "once you have ridden a bike" saying. But it was good fun, punctuated by a few of mother natures "Whoops" moments that come unannounced... Needless to say, three days later, there were aching muscles where he didn't realise he had any. He now has his eyes focussed on Lockerbie Ice Rink.... Covid permitting!

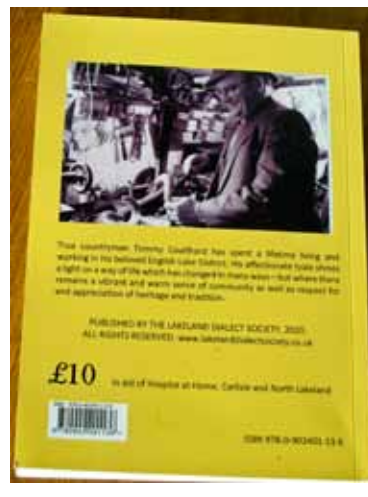
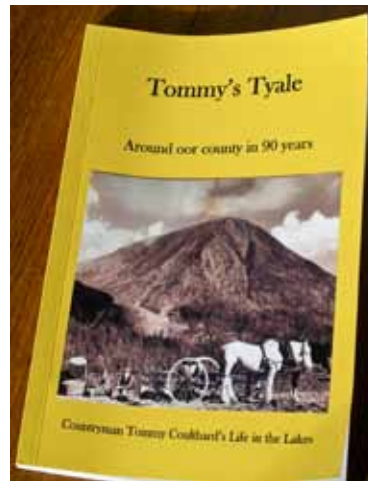
Book: Tommy's Tyale

A good friend of Silloth Rotary Club has just published a book about his experiences living and working in Cumbria.

Tommy Coulthard has been a regular visitor to Silloth's Local Dialect Competition as a (prize-winning) contributor and as chairman and currently President of the Lakeland Dialect Society. He began writing the book after his 90th birthday in 2017 and it's full of wonderful reminiscences of a working life on farms from before they had electricity or tractors and a full social life up to the present.

The book is being sold in aid of Hospice at Home - Carlisle and North Lakeland.

Copies can be bought for £10 plus £3 postage from Louise Green on 016973 71710 or by emailing her at irebygreens@btinternet.com, or contact Tim Barker 016973 31246



Chocolate Bee by Mia Grace Carter from Silloth Primary School



School Bee by Kieran Thompson from Silloth Primary School

Queen Bee by Millie Sessford from Holm Cultram Abbey School



Judge Bee by Jackson Grant from Silloth Primary School



D.A. Harrison

Haulage & Storage
 Sand, Gravel & Aggregates
 Readymixed Concrete
 Demolition & Site Clearance
 Licenced Waste Disposal Site & Skip Service
 Stevedores at Silloth Docks

Admin: 016973 42277 Transport: 016973 44000
 Skip Hire: 016973 31000 RMC: 016973 61777
 Fax: 016973 42210 E: info@daharrison.co.uk
 Silloth, Wigton, CA7 4NS

ATLAS
 CONCRETE LIMITED

Tel: 016973 32585 or 016973 42277
 Silloth, Wigton, CA7 4NS, www.atlasconcrete.co.uk

Manufacturers of all types of prestressed concrete panels and general purpose instant walling. Farm and industrial use, hollowcore floor units and 't' beams made to measure. Concrete posts & panels for instant security walling

DA Harrison & Company
 Petrol, Diesel & Convenience Store
 Waverton, Wigton, Tel: 016973 42277

Oil Spill on the Solway (Training Exercise)

Report by: Tim Riley,
Harbour Master, Silloth

At 09.57 on the 31st March, Exercise "Calamity Fisher" oil spill response was initiated at the Port of Silloth.

This event took place on the adjacent shores of the Port of Silloth and within the dock area. We were blessed with our normal amazing bright sunny and calm weather for this event and were able to involve three distinct teams from Adler and Allan, our Tier 2 and 3 responders and several local and national bodies, including the Maritime & Coastguard Agency in Southampton, Cumbria Fire and Rescue, Cumbria County Council Local Resilience, Allerdale Borough Council, Cumbria Constabulary and our own Associated British Ports team here in the Port of Silloth.

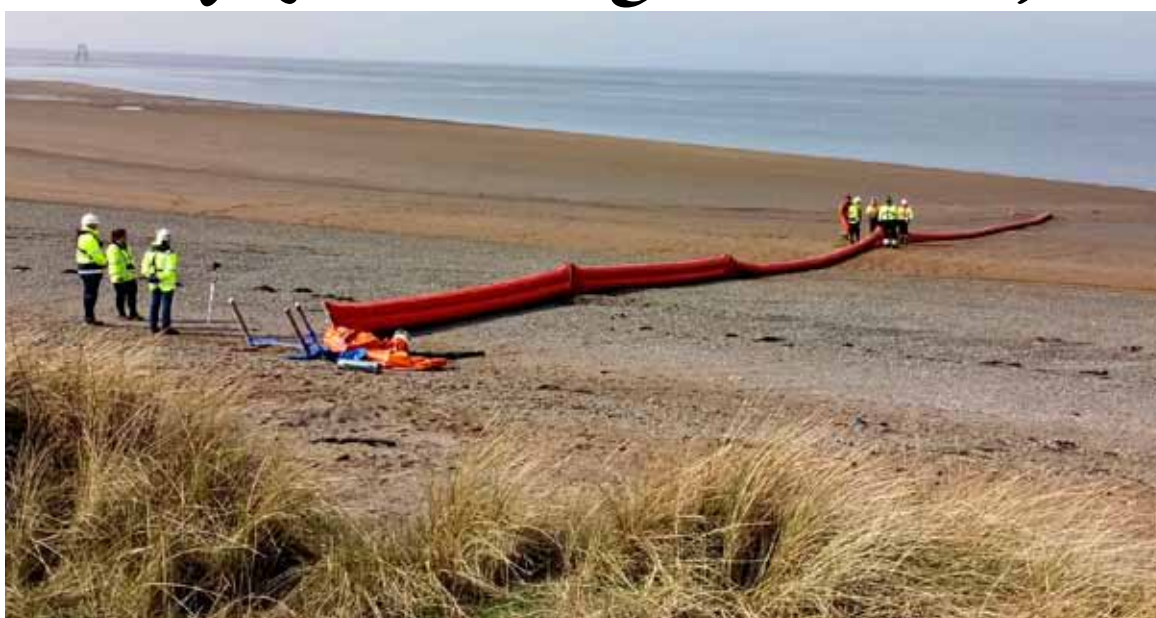
The Exercise: As a result of a damaged fuel tank, a vessel in the Solway Firth was leaking fuel, possibly sinking and requested permission to berth in the dock. We agreed that in order to prevent pollution to our local beaches, the various reserves and special sites surrounding the port that with the help of third parties we might prevent the vessel from sinking and thus losing further oil into the watercourse.

Marine diesel was found to have escaped into the Solway Firth and a boom was deployed to

collect and marshal this toward the shore using a R.I.B where it could be skimmed off the surface or held until evaporated.

In order to prevent any leakage from the damaged vessel, a boom was deployed around the hull and brought in close to it allowing collection systems to be used to contain any waste and contaminated products.

The event was attended locally by Fire and rescue, Police and Cumbria County Council, in addition to Adler and Allan. All persons attending in person were COVID tested on arrival whilst still in their vehicles and maintained appropriate distances whilst outside. Our more distant participants attended on the



Teams video software, which added to the reality of the drills and exercises carried out as many



people would be remote from the incident in a real time event, whilst others were travelling to site.

The exercise ended with a

good discussion of issues regarding our plan, Local Resilience Plans and local knowledge playing a significant role in the execution and that this knowledge should be

transferred to check sheets within our plans.

An excellent learning day was had by all, some new amendments will now be made to our response plan, which the Maritime & Coastguard Agency are keen to receive soon.

A big thank you to all the locals and visitors to the area walking on the beach for keeping clear of the activities.

HM Government

SAFE SPACES

IF YOU ARE EXPERIENCING DOMESTIC ABUSE, WE ARE HERE TO SUPPORT YOU.

ASK FOR ANI 

FOR IMMEDIATE HELP

OR

IF YOU NEED A SAFE SPACE

OUR CONSULTATION ROOM IS ALSO OPEN

FOR FURTHER INFORMATION VISIT: [GOV.UK/DOMESTIC-ABUSE](https://www.gov.uk/domestic-abuse)

Ask for ANI is available at WELL Pharmacy Silloth. The Ask for ANI scheme allows those at risk or suffering from abuse to discreetly signal that they need help and access support. By asking for ANI, a trained pharmacy worker will offer a private space where they can understand if the victim needs to speak to the police or would like help to access support services such as a national or local domestic abuse helplines.

SILLOTH CAFE

Traditional Fish & Chips

Mon-Fri 11:30am to 2pm
4:30pm to 8pm

Saturday 11:30am to 8pm
Sunday 11:30am to 7:30pm

Special Wheat Intolerance
Gluten Free Option

Pensioners Meal Deal:
Monday - Friday
Station Road, Silloth
Tel: 016973 31319

EST N^o 17 2015
DELICIOUS

Baguettes
Panini's
Breakfasts
Wraps & Coffees

17 Eden Street
Silloth, CA7 4AD
016973 32458

KL EXPRESS

Chinese Takeaway

Open at 5pm
Every Day

A Wide Variety of Dishes for Every Taste

Telephone Orders
016973 33033
43 Eden St, Silloth

Princess Anne Visits Mawbray School



our message across to children is an incredibly important part of this. By educating children as well as adults, I really believe we can help to save lives in the future. Having HRH, The Princess Royal present and able to witness the work we are doing in schools was a huge privilege. Not surprisingly, the children were incredibly excited and engaged."

Lynn Carini, Head Teacher at Holme St. Cuthbert Primary School, commented: "The children were thrilled by the Royal visit. They also got a vast amount from the BHS's session. A massive thank you goes to everyone involved in making this such a special day for our school."

The BHS's schools programme is called Henry the Horse. It is free to access and more information is available from: <https://www.bhs.uk/our-work/safety/henry-the-horse>

Report by: Mrs Sharron Henderson Small School Business Manager

Children at Holme St. Cuthbert Primary School enjoyed the excitement of a Royal visit in October 2020 when HRH The Princess Royal attended as part of a road safety campaign run by The British Horse Society (BHS).

HRH The Princess Royal is Vice-Patron of The Society and is an ardent supporter of the equestrian charity's education projects. The schoolchildren were given a talk by Alan Hiscox, Director of Safety at the BHS, who covered the increasing number of reported incidents involving horses and vehicles. Topics included best practice around road safety

awareness and how to pass horses safely on the road as pedestrians, cyclists and passengers in a car. The session also involved the children acting out scenes using hobby horses to bring some fun to the learning process! The children all received a rosette for completing the training module along with a leaflet to take home for their families to read.

Alan Hiscox, Director of Safety at The British Horse Society said: "We are very grateful to HRH The Princess Royal for all the support she gives to our many causes."

We have an ongoing initiative called Dead Slow which educates drivers and horse riders on how to stay safe when they encounter one another on the road and getting



Lowther Arms Successful Fundraising



Pictured here are members of the Management Committee outside the pub. Left to Right: Gary & Diane Byers with daughter Hannah, Vivienne Coleman, Chris Atkinson, Allyson & Craig Tunstall, Paul & Annette Gibbons OBE
284 Shareholders now own the Lowther Arms in Mawbray.
Huge thanks to all our supporters, shareholders and donors. You are awesome!



Alien Bee by Joshua Tubman from Holme St Cuthbert School

Star by Abigail Martin from Holm Cultram Abbey School

Police Urge You To Keep Dogs Under Control in the Countryside

Dog owners across Cumbria are being urged to keep their dogs on a lead when walking through farmland with lambing season beginning.

Lambing is a crucial time for farmers across the county.

The Dogs (Protection of Livestock) Act 1953 states that the owner of a dog worrying livestock on agricultural land is guilty of an offence. Sheep worrying includes attacking sheep, chasing them in a way that may cause injury, suffering, abortion or loss of produce or being under close control, on or off a lead, in a field or enclosure in which there are sheep. Farmers do have the right to shoot a dog that is worrying their livestock however this tactic should be reserved as a last resort.

Cumbria's Police and Crime Commissioner, Peter McCall, said: "Cumbria is a large, mostly rural county and we are extremely lucky to be surrounded by incredible, scenic walks. However; most of our rural areas are farmland and we all need to respect the farmers and their livestock that roam the fields. Lambing season is an incredibly important time for farmers and can be a stressful time for sheep so it's vital that we, as a community, work together to reduce any unnecessary risks and potential fall-out when walking our dogs. Animal worrying is illegal and farmers have the right to protect their livestock. To avoid any danger, keep your dog on a lead when around any farm animals in a field - especially if you can't be certain that your dog will return to you on first call. If you see anyone endangering livestock please report it to the Police on 101 or anonymously to the Crimestoppers



rural hotline on 0800 783 0137. Working together we can make Cumbria an even safer place for everyone to live, including animals, so please respect the rules."

Superintendent Carl Patrick, Cumbria Constabulary, said: "Sheep and livestock worrying is a serious issue that can be very distressing for farmers and livestock owners, who depend on these animals for their income."

"It is in a dog's nature no matter how placid they may be to chase and if sheep are chased, they become distressed and their instinct is to run, often resulting in injury or death. Dog owners must remember to keep their dogs under control and on a lead around farm animals and wildlife. We would advise all dog owners and walkers to adhere to the Countryside Code which offers advice on walking dogs responsibly near livestock and wildlife."

Ian Bowness, NFU Cumbria County Chairman, said: "We want people to enjoy the countryside as it's so important for people's wellbeing. It's vital that dog owners

act responsibly and keep dogs on a lead whenever there is a possibility livestock are nearby. In a recent NFU Mutual report alarmingly only 40% of the dog owners surveyed accepted that their pet could cause the injury or death of a farm animal. Even if a dog doesn't make physical contact, the distress and exhaustion of the chase can cause sheep to die or miscarry their lambs. It's important that owners realise that all dog breeds, not just the big, fierce looking ones, are capable of chasing or attacking livestock."

Members of the public who witness incidents or have information connected to livestock worrying are urged to report this to police on 101.

For incidents which are not ongoing, please consider reporting this via the online incident reporting form which is available on the Constabulary's website.

Alternatively, you can contact Crimestoppers, anonymously, on their dedicated rural crime hotline on 0800 783 0137.

COVID-19 NHS. Seeing friends again? Stay outdoors. We're much safer in the fresh air because Covid-19 particles are blown away. Let's take this next step safely.

FACE: Has their face fallen on one side? Can they smile? ARMS: Can they raise both arms and keep them there? SPEECH: Is their speech slurred? TIME: To call 999 if you see any single one of these signs. WHEN STROKE STRIKES, Act F.A.S.T.

COVID-19 NHS. Seeing friends again? Make space. Keeping our distance outside can help stop the spread of Covid-19. Let's take this next step safely.

IF PETER PIPER CAN PICK A PECK OF PICKLED PEPPERS, THEN YOU CAN PICK UP A POO. Image of a dog's face.

THE CANINE COUNTRYSIDE CODE. The 'Dogs Love Cumbria' guide includes advice on doggy etiquette to ensure safety of wildlife, farm animals and other visitors. 1 It's an offence to allow a pet to bother livestock. dogs should be kept on a lead and farm animals given plenty of space. should cows charge towards you, owners are advised to drop their lead and run to safety, allowing the dog to outrun any danger itself. 2 Keep dogs on a lead in areas where there is likely to be wildlife. Respect official signage that restricts access. 3 Be vigilant for parasites like ticks, insects and adders. If your pet is bitten by an adder, consult a vet as soon as possible. 4 Pick up after your dog and make sure plastic bags are disposed of properly in designated bins. 5 Keep dogs under control around horse riders, cyclists and other walkers - remember, not everyone loves dogs. 6 Areas like Grune Point during spring and summertime have many nesting birds in the long grass and in the shoreline gravel. Dogs running free in those areas will ruin the nests and smash the eggs decimating the bird population - all without any obvious signs to you. With this in mind please keep to the paths, avoid the shingle banks from now to the end of August, keep all dogs on leads beyond Grune House. Image of several dogs on leashes.

Your Very Welcome Buzzing Letters & Poems

The following was omitted from the last issue, for which we apologise.

Dear Buzz,

With a heavy heart, due to the death of my late husband, John, I would like to thank all my friends in Silloth for mass cards and sympathy cards I received. A proud father of Jacqueline, John and Karen, James and Margaret, grandchildren Caitlin, Kieran, and the late Ryan. Brother to James, David, Tom and Janette. A keen bowler and a friend to many, he loved his life in Silloth. A sad loss, love you forever, Margaret Crawford

AULD JONNY by John Jnr

Auld Johnny Craw father of mine
a better man so hard to find
A father of three and a husband to
mum
always first place his family would
come

A friend to many and a teacher to me
he shaped the good in the man that
I'd be
Hard work and toil was always his
way
Not a young man for leisure or play

As the years move on and a nice change
of pace
a new life in Silloth they would embrace
Bowling and golf would become his
new toil
gone were the days of diggers and oil

The beach with his dogs would make
him happy
dreaming up inventions, what a maddy
A few lines in a poem to describe such
a life
a truly great man to his kids and his
wife

Justice can't be done with the stroke of
my pen
how to describe one of life's great men
On this earth you're no longer here
but in our hearts you'll always be dear

A better father to me there could have
been none
It makes me proud to be your son!!

Dear Buzz,

It is with considerable regret that we have to say good-bye to our home-from-home in Esk Street after thirty-three years of enjoying Silloth-on-Solway with its splendid location on the south side of the Solway Firth (Fjord) and commanding glorious views of both the Scottish Mountains and Cumbrian Fells and the renowned magnificent sunsets. From day one we were welcomed with friendly and helpful greetings from the townsfolk of Silloth and instantly felt at home. We have enjoyed this warmth ever since and only regret that Covid19 has prevented us from bidding a proper farewell to our many friends and acquaintances.

This we now try do through the pages of the Solway Buzz which is, in our opinion, the best produced and informative community newspaper in the country.

We will miss the beach with its walking paradise stretching some fourteen miles from Grune Point to the yacht marina at Maryport, the easy access to the peaceful northern lakes and fells, Hadrian's Wall, the historic city of Carlisle and the golf course. But above all we will miss the 'bit craic' we have regularly enjoyed with the people of Silloth, including the shopkeepers and tradespeople whom we have come to regard as friends. Thank you all so much and may you continue to prosper.

Inger and Graham Suggett

Dear Buzz,

On 17th December 2020 we celebrated our Diamond Wedding Anniversary. We would like to pass on our thanks for all the lovely cards, gifts and flowers received, and we were overwhelmed by the wonderful messages received on Facebook. Thank you all from the bottom of our hearts.

John and Irene
Glencross



Opaque
by Sophia Lodhi

Opaque is my mood as I move through the mist...
Opaque as the hills as they dip, fall and drift...
Opaque is the firth through the fog, drips and mizzle...
Opaque: the wild rose as it slants in the drizzle...

Opaque are the gulls wheeling up in the heights,
Through the nebulous space of the liquid skies...
Opaque is the heron who calls for his mate;
For now, contemplating his solitary state.

Opaque is this image, this picture and frame...
Enclosing my heart in the drear and the rain.
Opaque are the clouds as they leave with the geese...
Migrating in skeins, carried on the chilled breeze.

Opaque is the thistle, too proud just to fade -
Its amethyst glisten alive through the greys.
One day, an opal-bright spear from the sun
Shall break through opaque: this bleak realm, overturn.

Dear Buzz,

Its no secret that despite being away from Silloth for over 40 years, I absolutely adore the place, this is partly down to rose tinted glasses and the fact that I have a memory of every bit of it.

One year we brought some friends up with us and to be honest they weren't over excited about the place and seeing it through their eyes I can understand their lack of enthusiasm for the town. The campsites quite rightly look after themselves which is fair enough as they put the investment in but unless you hit Silloth on an events weekend its a bit lacking. Hopefully one day soon we will have some restrictions lifted and visitors can again come, with this in mind can I propose the council consider the placement of picnic benches on the green to run the full length of the private road to the Fun Fair on Lawn Terrace side and also consider investing in a Crazy Golf course and/ or Putting Green. Its just a thought as now I am considered a holiday maker and bring my grandchildren up, they don't want to leave the Holiday Camp and I can understand that, they wouldn't even see the town.

David James

Sweet Tweet
by Ruth Southgate sent in by Val Boynton

Into the garden came a bird
with the sweetest song I ever heard
When he had enough to eat
he suddenly began to tweet

His eyes were bright and chest was red
I listened carefully to what he said

Last year there had been strange seasons
he did not understand the reasons
but lately he had heard good news
that may well chase the winter blues

He sang his song with hope and pride
as though enticing me outside

Green shoots were pushing through earths floor
then catalogues came through the door
with colourful plants and lots of seeds
I must get out and clear those weeds

Now although that bird has gone
I don't feel I am on my own

Help Save the Planet, TAKE YOUR LITTER HOME
by Norman Foster

Allerdale, what better place to be?
Close to the fells and close to the sea
BUT, hold on a minute; there's something not quite right
There's litter everywhere and it's spoiling the sight

The roadsides around Abbey Town are an absolute disgrace
The litter is building and it's spoiling the place
The grass verges are full of cans, plastics and glass
It really is a pain in the grass!

"There are not enough bins around!" I hear people shout
The usual response from the lazy litter lout!
Keep it in your car and take it home
Then put it in the bin or the re-cycling zone

If you are a parent, please educate your kid
Teach them to do the right thing; like my parents did
Keep hold of your plastic, glass and tin
Then find a bin to put it in

Do you have a poem or letter for the buzz?
We welcome all submissions, there is no charge.
Please remember to include your contact information.

Masthead Bee Winner

Carlisle Embroidery are generously donating a Solway Buzz embroidered Kids Rucksack to the winner. This is in addition to the usual Winners Certificate and £5 Gift Voucher.

So, come on kids, get drawing, the Buzz is always looking for more imaginative bees and yours might be the next winner. Return to your school, or the Discovery Centre, or post to the address on page 14 (large stamp) and a quality Solway Buzz embroidered Rucksack from Carlisle Embroidery could be yours. You don't have to be at school here to send a bee to us. If you are here on holiday we would love to have your bee drawing. Pick up a form from Silloth Tourist Information and return it there or send it to us, our address is on page 14.

This month the winner is Tommy Reid from Silloth Primary School with a bee drawing called "Agent B".

Well done!



Non-Commercial Tourism Websites

solwaybuzz.co.uk
sillothgreen.co.uk
sillothonsolway.co.uk
sillothgolfclub.co.uk
vintagerally.co.uk
sillothbeerfestival.co.uk
sillothmotorcyclemuseum.co.uk
silloth-on-solway-tc.gov.uk
visitcumbria.com/wc/silloth
soldiersinsilloth.co.uk
solwayplain.co.uk/silloth1.htm
facebook.com/sillothgreen
facebook.com/silloth-carnival
facebook.com/groups/121042258051545 (Silloth Today)

Following in Mums Footsteps

After 35 years of providing foot healthcare to people (20 of those years in Silloth) Lynn Devine has decided that now is the right time to retire and hang up her scalpel and nail nippers.

However, this doesn't mean that Lynnwood Foot Healthcare Clinic is closing, far from it, as Lynn is happy to introduce her daughter Alyson, who has recently qualified in Foot Healthcare and will continue to provide excellent foot care to the people of Silloth and surrounding areas.

The clinic will continue from the same premises, (5 Pine Terrace, Silloth) and if you already have an appointment booked this will go ahead as normal. Anyone wishing to make appointments with Alyson should telephone: 07738 977246 or 016973 34268.

Lynn thoroughly enjoyed her career, especially meeting so many wonderful people. It has been her great privilege and pleasure to serve the people of Silloth all these years, and she thanks you all for



your loyalty and friendship. Lynn will miss you all, but looks forward to seeing people in the town on her daily dog walks.

Lynn is still going to be offering Bowen Therapy as usual, so this stepping back does not affect any Bowen appointments. Appointments for Bowen Therapy can still be booked on 016973 31632).

Allerdale GDF Working Group Launches Online Virtual Exhibition



Go hundreds of metres underground to see how a Geological Disposal Facility could work

The Allerdale GDF working group have today launched an interactive virtual exhibition to explain to members of the public what a Geological Disposal Facility (GDF) is and how they can get involved in the decision-making process.

This interactive experience allows visitors to move around a virtual exhibition hall and look at a range of digital exhibits, including videos, graphics, blogs and other informative resources from the safety of their own home. It explains the process involved in finding a suitable GDF site, brings to life what a facility could look like, and delves into what hosting a GDF could mean for the local community.

Allerdale GDF Working Group Chair, Jocelyn Manners-Armstrong,

said: "Under normal circumstances, we'd be out and about meeting people face to face. But we can't do that right now and until we can we wanted to provide an experience that's as near to that as possible."

The Allerdale GDF Working Group was established in January 2021 to start discussions with the people of Allerdale and local businesses about the potential for building a GDF facility somewhere in the borough, to dispose of the UK's radioactive waste.

Working Group member and Allerdale Borough Councillor Marion Fitzgerald said: "We really want local people to visit the virtual exhibition to help people understand what geological disposal could mean for Allerdale"

The Working Group, which was launched in January, has three

main tasks – begin the discussion with the people of Allerdale to understand their concerns and answer their questions; identify a search area within Allerdale which could be investigated for potential locations for a GDF, and identify initial members for a Community Partnership which could take that work forward.

The exhibition can be accessed via the 'Get Involved' page on the Allerdale GDF Working Group website – <https://allerdale.workinginpartnership.org.uk/get-involved/>

For those without access to digital channels, a dedicated phone line has been set up to answer queries or discuss areas of interest: telephone 0300 369 0000. Alternatively, email: gdfinfo-allerdale@nda.gov.uk



Lola the School Bee
by Daisy from Silloth Primary School

ABSOLUTE TREATMENT for Mind & Body

Hypnotherapy, E.F.T., Neuro Linguistic Programming can help you overcome:

Phobias & Fears

Anxiety, Stress, Worry

Depression

Increase Confidence

Lose Weight

Stop Smoking

Increase Motivation

Get in Shape

Qualified Hypnotherapist Coach & Personal Trainer
Wayne Charles Shepherd C.H. D.Hyp offers a fast effective confidential service to help you achieve your goals

Free Initial Consultation, Home Visits & Appointments
Call Now: 07732 929781



BonBon Bee
by Miley from Holme St Cuthbert School

Cushions & Covers

Upholstery, Blinds, Curtains, etc.

Whatever your furnishing needs, ring Irene on 016973 31836 or 07902 805196, Email: armstrongi@btinternet.com

Fairydust Emporium Vintage Tearoom & Shop
Eden St. Silloth
Open 7 Days Tel: 016973 31787 or 07842 062118
Rated Number 1 **tripadvisor**
The home of the **Biggest Hot Chocolate** in Cumbria
Re-opening May 17th
Silloth **Fairydust Cabin** Green
A Gnome in One Putting Green
The Silloth Fairy Trail & Wishing Tree
search FairydustHQ

ANIMAL & POULTRY FEED

(farm deliveries)
(hay & straw available)



CALOR GAS AGENTS

(discounted prices)
(free local delivery & connection)



open 6am-8pm Mon-Sat, 7am-7pm Sunday

Harrisons Store Ltd, Abbeytown
Tel/Fax: 016973 61231 ~ M: 07972 805074

Copy Date →

Copy date for the June issue is:
1st week May
If you have an event to promote or you have something to say, please note the next copy date.

Please let us know of any changes within this section

Coast Bus Timetable

60E Maryport to Skinburness the current timetable is available from Silloth Tourist Office or Winters Newsagents or www.ellenvalecoaches.co.uk/service-60e.html

Silloth RNLI Shop

SHOP OPENING HOURS

Due to Corona Virus our shop will be closed until further notice. Kind regards to all our customers and we will see you again in due course.

Christ Church

For baptisms and other church related business please contact: Rev Bryan Rothwell The Vicarage, Wigton Road Tel: 016973 31413

Civic Amenity Sites

Operated by Cumbria County Council. Tel: 01228 606060
Maryport Tip, tel 01900 66922 open daily 8am to 6pm
Wigton Tip, tel 016973 45617 open Tuesday, Thursday, Saturday & Sunday, 8am to 6pm

Silloth Tennis Club

For coaching information call David Wise on 07742 547767

Please tell us when your group starts up again so we can let everyone know

Production Team

Proprietor:
Peter McRobert
Barn Cottage
Skinburness, CA7 4RA
Tel: 016973 32180
Email:
office@solwaybuzz.co.uk

Editorial Content
This is down to you, we can only publish items if you send them to us. When sending articles in, please supply a contact name and number in case something requires clarification. Published by: Peter McRobert with the support of the whole community and an army of volunteers.

Errors do occur in Dates for the Diary Please check before attending an event

Do you have an event in the area bounded by Abbeytown, Mawbray, Silloth, Skinburness, if so please let us know.

Please note that articles, letters and virtually all content of the Solway Buzz are contributed by YOU, the local community. The Editor reserves the right to control what is included, however, no responsibility whatsoever for the content of the Solway Buzz can be accepted by the Editor, or the Publishers.

Send Your Bees to the Solway Buzz There is a Bee Shortage, we Need Yours!

RNLI in Search for Missing Person

Silloth RNLI lifeboat was paged at 00:21 on Monday 22nd February, tasked to assist Cumbria Police with a search for a missing person. Also involved in the incident were Maryport, Burgh by Sands and Annan Coastguard teams, Police dog units, a Police helicopter and Cumbria Fire and Rescue.

The search took place around Grune Point, Longdyke Scar, Cardurnock Flatts and Whitrigg Marsh area.

Despite it being low tide, the lifeboat was able to make a comprehensive search over a wide area. The search was called off at 03:03 and the lifeboat returned to station and made ready again for service by 03:55.

Dates for Your Diary

Due to the many changes and cancellations to events this year we have cleared the diary and ask you to send in dates as soon as you have them

Silloth Lifeboat Bogged Down on West Beach!



Report by: Julie Emary
Lifeboat Press Officer

The three day West Beach 'bog down' training for the tractor and trailer last September, paid off for Silloth RNLI, when they unintentionally got stuck on Sunday 21st February 2021.

Both the tractor and trailer sank in the mud on the West Beach and the crew had to use their beach recovery training to extract both, from the sand and mud.

With both the tractor and trailer immobile, the tractor had to unhitch the trailer, in order to free itself first, as the trailer and boat were too heavy for them all to be pulled out together. The two sand anchors were positioned to assist the

recovery when put under tension by the tractor, which could then pull itself free of the mud, using the anchors as leverage.

Once on a firmer surface on the beach, the tractor was then able to pull the trailer and boat out of the soft mud.

The weather was particularly kind that day, after weeks of cold winds and rain, making the whole exercise a worthy reminder of the process involved, without it being too disagreeable.

The tractor and trailer were then taken back to the boathouse, where a thorough wash down was necessary but at least everything was back safely, along with all the crew.

New Directory for Businesses in Allerdale



Businesses in Allerdale are being encouraged to sign up to a new online directory designed to showcase local firms to residents and visitors.

The directory has been designed by Allerdale Borough Council to ensure all businesses in the area have the opportunity to be recognised by as many people as possible.

The Council - who are hosting the directory on their Visit Allerdale website - wants to highlight local businesses to both visitors and residents, encouraging them to use the directory as a 'one-stop shop'.

The idea is to encourage more customers to local shops and services and make people aware of how much the region has to offer.

Each business can assign themselves to a relevant category for easy use, using a very simple online form at <https://visitallerdale.co.uk/add-your-business/>.

The form asks each business a few questions, upload images and relevant links and, once checked and approved, details will be published and

instantly visible on the Visit Allerdale website at <https://visitallerdale.co.uk/allerdale-business-directory/>.

Cllr Mike Johnson said: "Supporting businesses is a key part of our council strategy and we hope this new directory will help businesses come through these challenging times and support them beyond the pandemic. We know this type of content is well-received on our Visit Allerdale site as the directory will build on the success of our virtual Christmas market which had more than 2,000 visits in just seven days over the festive period and became the most-read page on the website."

The information will also be linked to Copeland Borough Council's business index and vice versa. This is part of our detailed economic recovery plan which aims to support our local businesses recover from recent difficulties, thrive and move forward in the future. For any questions or queries, please email ellie.jones@allerdale.gov.uk.



Bareey
by Eddie Harrison
from
Holm Cultram Abbey School

Voting Safely at May's Elections

On Thursday 6th May 2021 residents in Allerdale will go to the polls to have their say on who represents them in Police and Crime Commissioner, and election organisers are making plans to help electors stay safe while casting their vote.

There are a number of ways to vote in the elections in May – by post, in a polling station, or by appointing someone you trust to vote on your behalf, which is known as a proxy vote. The deadline for residents to apply for a postal vote is 5pm on 20th April 2021, and for a proxy vote the deadline is 5pm on 27th April.

Voters can apply for an emergency proxy vote up until 5pm on the day of the election, with those who have tested positive or are self-isolating due to Covid-19 are not required to provide proof from a medical professional.

The deadline to register to vote if you are not already on the electoral register is midnight on 19th April 2021. It is particularly important that those who have recently turned 18 or moved home, act now to check and ensure that

they are registered to vote. Anyone with any queries should contact the council's local elections team.

Andrew Seekings, Returning Officer for Allerdale Borough Council, said: "The elections are an opportunity to make your voice heard and have a say on who represents you on issues that directly affect day-to-day life here in Allerdale. Whichever way you choose to cast your vote in May we're putting arrangements in place to help you stay safe. At the polling station you can expect many of the measures you've become used to in shops and banks over recent months, such as screens, hand sanitiser, floor markings and face masks. But you also have the option to apply to vote by post or by proxy. We also want to make sure you can take part in these elections. They are an opportunity to make your voice heard and have a say on who represents you on issues that directly affect day-to-day life. If you're not registered by 19 April, you won't be able to vote."

Ailsa Irvine, Director



of Electoral Administration and Guidance at the Electoral Commission said: "The choice on how to vote in May's elections is yours – you can have your say in person, by post or by proxy. If you're thinking about voting by post, you can apply now. This will make sure your application is processed early, and your postal vote can be sent to you more quickly. "You need to be registered to vote in order to have a say at the elections – the easiest way to register is online at www.gov.uk/register-to-vote."

Residents can visit the Frequently Asked Questions on the council's website at <https://www.allerdale.gov.uk/en/elections/elections-may-2021> to find out more about the elections on 6 May 2021. The page will be updated with new information as it becomes available.

Any residents who have questions can also contact their local elections team at electoralservices@allerdale.gov.uk or on 0303 123 1731.

Coastal Erosion & Flooding Strategy

Cumbria County Council's Cabinet have on 18th March approved a new strategy for managing coastal flooding and erosion risks along the Cumbrian coastline over the next century.

The Cumbria Coastal Strategy recommends long term sustainable solutions and will be used to make the case for government funding for coastal management defence schemes in the future.

Over the last three years, Cumbria County Council has worked together with the District Councils, Environment Agency, Natural England and Network Rail, as well as a number of other key organisations, to develop the strategy for the future management of the coast. The consultants Jacobs were commissioned by the County Council to help develop the strategy,

and the project was funded by the Environment Agency.

The County Council has also worked with local communities at key stages of the strategy development, with engagement allowing everyone to help determine how their coastline should be managed.

The County Council will continue to work alongside the relevant Coast Protection Authority or infrastructure provider to support delivery of the actions and future schemes set out within the strategy. Much of the study work proposed in the strategy will justify the viability of future projects and will result in further investment in the Cumbria coastline.

Cllr Keith Little, Cumbria County Council's Cabinet Member for Highways and Transport said: "To ensure we fully understand

and include the impacts on communities, the local economy and environment, the council has carried out two rounds of public engagement and also engaged with a number of partners and stakeholders to help shape and inform the content of the strategy. I'm delighted that the Environment Agency and the five Cumbria Coast Protection Authorities are all fully supportive of the strategy. This will put us in the best place possible to secure funding from the government for future flood and coastal risk management schemes and also help secure national funds to contribute to the cost of defences."

More information on the Cumbria Coastal Strategy, and the proposed approaches and future activities recommended, are available on the project website at www.cumbria.gov.uk/ccs/

New RNLI Tractor Tyres



Report by: Julie Emary
Silloth RNLI Press Officer

Silloth RNLI lifeboat tractor was given a brand new set of tyres on Wednesday 24 February. It was quite a task to change all four of them, particularly as the weather was not very favourable.

Each tyre is filled with approximately 75% salt water giving extra weight and ballast

to the tractor, this makes it more stable when going into the sea with the trailer, to launch and recover the lifeboat.

The extra tread on the new tyres will give more grip to the tractor both on the road and sand, particularly now that the lifeboat is using West Beach more frequently, due to the build up of mud at the lifeboat slipway.



Winter Bee
by Meishan Whitehead
from Silloth Primary School

Hair She Goes
Mobile Hairdresser
Silloth and district
Call Melanie on:
07857 989358

GOOD COMPANIONS RESIDENTIAL CARE HOME
Long & short term stays in single en-suite rooms
Day Care £25 per person ~ limited spaces available weekdays
Free transport provided locally
Local Meals on Wheels

Criffel Street,
Silloth

Tel:
016973
31553



www.goodcompanions.net

British Heart Foundation
FREE & FAST COLLECTION
of your unwanted furniture and electricals
Call BHF Workington 01900 358 783
Book online: bhf.org.uk/collection
© British Heart Foundation, registered charity in England and Wales (225971) and in Scotland (SC039426)



Local Tradesmen and Services

Aerial Services

Beacon Aerial Services, Wigton

Tel. 07941 370669

TV Aerials

Satellite systems

Home Cinema

High Definition Distribution

CCTV

Audio and PA Systems

Computer Networking
Cabling and Wi Fi

Chimney Sweep

McDermott Chimney Sweep

Fire Service & Refurbishment

Fully Insured



REGISTERED MEMBER



The Institute of Chimney Sweeps

Mob: 07878 147444

Tel: 01228 542420



Cleaning Services

EILBECK CLEANING SERVICES

Domestic & Commercial
Cleaning Professionals

Hot & Cold Power Washing

Carpet & Upholstery Cleaning

Sand/Abrasive Blast Cleaning

With 25 years experience we
pride ourselves in a top quality
job everytime

For a free quotation and
home visit call

Tom on 07751 097035

QUALITY EVERYTIME

Denture Repairs

Addison Orthodontics

Dental Repair Service

54 Esk Street

Silloth, t: 016973 32208

Electricians

Ian the Electrician your local connection

Over 30 years experience
Friendly and reliable service



All domestic installations
Inspection and testing
Maintenance & repairs

Mob: 07727 127000

Tel: 016973 23420

Plant Hire

DIGGERS For HIRE



JCB 8026 Ideal for little jobs.
Driveways and around the Garden.

JCB 86-C1 Suitable for housing
sites, ideal around the Farm.

Doosan 22 Tonne

The big jobs, Stripping ground,
Demolition, Crushing, etc.

Tel Eric Stanwix, Silloth:

07736 774 788

also available to Drive Freelance on
other Diggers CPCS 360 above and
below. Ten ton CSCS Card
Blue Card Holder

All Trades

TRIPLE TTT



Here are some of the jobs we carry out:

- Grass cutting
- Hedge cutting
- Moss/weed control
- Fence building
- Brick laying
- Paving
- Roofing
- Rubbish/garden waste removal
- Patio/driveways
- Full design & landscaping
- Tree surgery

- Window cleaning
- Pressure washing
- Patio/driveway cleaning
- Guttering cleaning & installation
- Soffit & fascia boards cleaning
- Painting



Tel: 01900 810008

Web: www.triplettt.co.uk

E: enquiries@triplettt.co.uk

Decorators

MIKE JONES

Painter & Decorator

Call now
for a free quote

Facebook:

Mike Jones painter and decorator

mikedecorator53@gmail.com

T: 07842 355486

When a job needs doing

Get It Done!

Firewood

Seasoned Firewood Logs

DELIVERY
AVAILABLE

Tel: Ashley Sharp
016973 31495
07762 772208



Joiners

OUTDOOR JOINERY

All outdoor joinery

Maintenance &
Repair work of all
kinds

Laminate flooring
fitted

Tel Norman on:
016973 61256 or
0785 754 7783

David Read

Carpentry & Joinery
Property maintenance &
repairs

Tel: 016973 32245

Mob: 07759 783823

Plumbers

KMG Plumbing & Heating

Gas, LPG, Oil, Solar & Solid
Fuel systems

Experienced and Local

Tel: 01900 881462

Mob: 07590 522621

M. TAYLOR

Over thirty years
experience in
the installation,
maintenance
and repair of
domestic gas
and heating systems,
all aspects of domestic
plumbing undertaken no job
too small, local and reliable



Tel: 016973 32672

Mob: 07773 069856

Window Cleaner

Abbey Cleaning Services

Call Ryan on 016973 61162
or 07732 270844

working throughout
Abbeytown, Silloth &
surrounding areas

Advertise Here!

in the Tradesmens
Section only £157

for
ten issues

or a 6.5cm box
for only

£275.75

for ten issues





Roofers

Allerdale & Eden ROOFING SERVICES

Slating & Tiling • Velux Window Installations
Repairs • Lead Work • Flat Roofing Specialist
Fascias & Guttering • Storm Damage
Insurance Work • **Free Estimates and Free Advice**

Maryport: 01900 813517

Whitehaven: 01946 313103

Mobile: 07518 454396

www.allerdaleandedenroofingservices.co.uk



PM Roofing Specialists

Proprietor Peter McKie, Established 1980

No job too big or small • uPVC Guttering, Facias & Soffits
• Re-slating • Tiling • Chimney Stacks

• Flat Roofing Specialists (Firestone rubber cover & GRP Fibreglass with 30 year guarantee)

Insurance Claims * Free Estimates

Tel: 01228 548591 or Mob: 07931 362163

or 07833 305647 or 07534 050007

Window Installations & Repairs

WEST COAST WINDOW SYSTEMS

- Double Glazing Installations & Repairs ■
- Windows ■ Doors
- Roofline ■ Conservatories ■

All Repairs to Existing Glass and Handles, Hinges and Locks
FREE QUOTES ■ WORK GUARANTEED

Call James Watret 07921 542788 or 01461 202649



NHS Bees

by Christina McGuire from Holme St Cuthbert School

Solway Buzz Phone Book

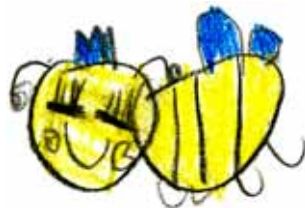
This section recognises those whose financial help keeps the Solway Buzz going. If you wish to contribute in this way without taking an advert, please contact the Buzz, it costs only £52 a year.

Abbey Cleaning Services	07732 270844	McDermott Chimney Sweep	07878 147444
Absolute Treatment	07732 929781	Mike Jones Decorator	07842 355486
Addison Orthodontics	016973 32208	Mike Taylor Plumbing	07773 069856
Allerdale & Eden Roofing Serv's	01900 813517	No. 17 Delicious	016973 32458
AMC Scrap Metals	0774 2221222	Outdoor Joinery	016973 61256
Beacon Aerial Services	07941 370669	PM Roofing Specialists	07931 362163
Bendles Solicitors	016973 42121	Queens B & B	016973 31373
British Heart Foundation	01900 358783	Seasoned Firewood Logs	07762 772208
Christine's Taxis	07917 564583	Silloth Cafe	016973 31319
D A Harrison	016973 42277	Slimming World Loretta	07766 118556
David Allen Accountant	01228 711888	S.O.S.C.S.	016973 32452
David Read joinery	07759 783823	Stanwix Park	016973 32666
Devonshire House Dentures	01228 529128	The Charity Shop	016973 31696
Digger Hire	07736 774788	Triple TTT	01900 810008
Eilbeck Cleaning Services	07751 097035	Upholstery, Irene Armstrong	016973 31836
Fairydust Emporium	016973 31787	West Coast Window Systems	07921 542788
Fiona's Footcare	07704 484287	West Silloth Motors	016973 32833
Good Companions	016973 31553	Wheyrigg Hall Hotel	016973 61242
Green View / Stella's	016973 31743		
Hair She Goes	07857 989358		
Harrisons Store Ltd	016973 61231		
Ian the Electrician	07727 127000		
Jaybees	016973 31245		
KL Express	016973 33033		
KMG Plumbing & Heating	07590 522621		
Man with a Van	07736 774788		
Mark Hansford Computer Services	016973 32089		

Useful Tel Numbers

Age Concern Home Safety Scheme	0 1 9 4 6 6 8 9 8 6
Allerdale B. Council	0 3 0 3 1 2 3 1 7 0 2
Chemist, Silloth:	0 1 6 9 7 3 3 1 3 9 4
Community Grants:	0 1 9 0 0 3 2 5 0 1 3
Crime Stoppers:	0 8 0 0 5 5 5 1 1 1
Dentist, Alma Terrace:	0 1 6 9 7 3 3 1 2 7 0
Dentist, Emergency:	0 1 2 2 8 6 0 3 9 0 0
Doctor:	0 1 6 9 7 3 3 1 3 0 9
Doctor CHOC service	0 3 0 0 0 2 4 7 2 4 7
NHS	111
First Responders can only be called by the Ambulance service, call:	999
Gas:	0 8 0 0 1 1 1 9 9 9
Highways Hot Line	0300 303 2992
Hospital:	0 1 2 2 8 5 2 3 4 4 4
Holme St. Cuthbert School, Mawbray:	0 1 9 0 0 8 8 1 2 4 2
Holm Cultram Abbey CofE School	0 1 6 9 7 3 6 1 2 6 1
MP, Mark Jenkinson:	0 1 9 0 0 8 7 6 1 8 9
Neighbourhood Forum:	0 1 9 0 0 3 2 5 0 1 3
Police:	101
Quakers, Wigton:	0 1 2 2 8 5 2 3 1 7 4
Register Office, Wigton:	0 1 2 2 8 2 2 1 1 2 2
Samaritans:	0 1 2 2 8 5 4 4 4 4 4
Silloth Community School:	0 1 6 9 7 3 3 1 2 3 4
Silloth Library	0 1 6 9 7 3 3 1 9 4 4
Silloth Nursery & Junior School:	0 1 6 9 7 3 3 1 2 4 3
Silloth Town Clerk:	0 1 6 9 7 3 3 1 1 2 8
Silloth Tourist Information Centre:	0 1 6 9 7 3 3 1 9 4 4
Solway Buzz:	0 1 6 9 7 3 3 2 1 8 0
Paragon Vet:	0 1 2 2 8 7 1 0 2 0 8
Millicroft Vet:	0 1 6 9 7 3 2 3 8 9 8
Waste Disposal Dept:	0 1 9 0 0 7 0 2 8 0 0
Water LeakLine:	0 8 0 0 3 3 0 0 3 3
West Cumbria Carers	0 1 9 0 0 8 2 1 9 7 6
Please, let us know what you want included, also any changes to numbers.	

Advertisers entries are Free in the Phone Book



Melena
by Ruby Smith
from Holm Cultram Abbey School

Starting School Bee
by Logan Morris-Crawford
from Holm Cultram Abbey School



Bob by Leo Alfie Whittle
from Silloth Primary School

2020 Shipping at Silloth - A Photographers Review

Report & Photos by:

John Forrester

More coverage of shipping at Silloth can be found at www.cumbriashipphotos.weebly.com



2020 was a year like no other, one which most of us would prefer to forget. However, life continued with outdoor interests providing a welcome distraction during lockdown.

As always, Silloth waterfront was an ideal location for photographers to pursue their hobby. It was business as usual at the dock with a good number of arrivals delivering agricultural cargos. Ship movements are governed by the tidal cycle resulting in many ships coming and going at night, much to the frustration of photographers, so this review includes some photos from previous visits.

The port welcomed the usual

varied mix of vessels, some familiar faces and others new. After a quiet start to the year, and with the improving Spring weather, shipping began to pick up. The first notable visitor was RODAU, arriving from the Moroccan port of Jorf Lasfar after a seven-day sailing. The country is a major producer of fertiliser using local phosphate rock as raw material. Arrivals from this distant Moroccan port are rare and eagerly anticipated by ship spotters.



Other highlights of the year included ships of unusual design such as PEAK BERGEN with

its bridge at the bow, more used to transporting bulky project cargo, and Russian self-loader, MEKHANIK PUSTOSHNYI, with its deck cranes. Interestingly, neither ships used their specialist facilities on these visits.

The majority of ships were of a more conventional build, many privately owned, kept in tip-top condition and contracted to work for major shippers. The Lithuanian owned TANJA and FRANCISCA were examples of the latter, arriving from the Baltic port of Klaipeda during May and June. Northern Europe provides much of the cargo received at Silloth; in the case of the Baltic sea ports, a

six-day sailing is required via the North Sea and West of Scotland.

As the year progressed the country was adjusting to living with Covid. The sight of the Silloth pilot and ship's crews wearing face masks and gloves became the norm as they worked together on the bridge during arrivals and departures. The majority of visiting ships were foreign-owned, however the UK was well-represented by Tyneside company Gillie & Blair. Three of their sister ships, SEA HARMONY, - HUNTER and - RUBY all called from Antwerp. These thirty-year-old workhorses were built to last and can be

regularly seen serving short-sea routes around the UK.

Finally, a review wouldn't be complete without mention of old faithful ZAPADNYI, the molasses tanker. She called eight times during the year with her viscous cargo; that's an awful lot of livestock feed 'lick! The arrival of ZAPADNYI often provides some excitement as she has the reputation of being difficult to handle, and has not always entered dock unscathed! The green lady is always a welcome sight but some of us would like to see a wider selection of tankers, maybe our wish will come true during the coming year.





December to March Shipping Movements at the Port of Silloth

Report by: Capt Tim Riley,
Harbour Master, Short Sea Pilot

December

3rd Zapadnyy with molasses from Bremen then on to Klaipeda.

18th Jan D with wheat from Nakskov then on to Rekeford.

21st Wilson Horten with fertiliser from Ghent then on to sea for orders.

29th Zapadnyy from Amsterdam with molasses then on to Klaipeda.

29th Wilson Fedje with fertiliser from Gdansk then on to La Caruna.

30th Emstal with fertiliser from Klaipeda then on to Dunkerque.

January

2nd Stortebeker with wheat from Vierow then on to sea for orders.

2nd Kapitan Sakharov with fertiliser from Ghent then on to Archangel.

February

18th Lady Astrid with fertiliser from Antwerp then on to Dublin.

23rd Eems Sun with potash from Hamburg then on to Belfast.

25th Zapadnyy with molasses from Amsterdam then on to Bremen.

March

7th CEG Universe with logs from Salacgriva then on to Dundalk.

10th Eems Exe with NPK fertiliser from Ghent then on to Limerick.

10th Zapadnyy with molasses from Bremen then on to Amsterdam.

12th Karion with fertiliser from Vyborg then on to Glasgow.

26th Wilson Grimsby with fertiliser from Gdansk then on to Jossinfords.

December was a quiet month again, all up until the last week or so when the Mill and the Farming Community decided to stockpile

just in case Brexit ended up costing too much.

We ended up with five vessels in twelve days, which is very much good fun for the port and ship manoeuvring within it. Playing dodgems with 4,000 tonnes of metal plus cargo can be a bit intimidating even in open spaces, but is more so in the confines of a space completely walled in with Granite, Concrete and Sandstone.

Imagine your own car, it is probably around 6m long, now draw a line 3m in front of it and directly behind it, so you have 2 lines 9m apart, now turn your car around without overhanging the lines, let alone going as far as the wheels crossing the lines. Now imagine doing that in something that is 15m wide and 90m long? All good fun.

So we had our old friend Zapadnyy back again for a second visit in December, bringing in more Molasses by Prime, for the farm and animal feeds industry at Caltech-Crystalix in Silloth. This is augmented with chaff and other by-products from the Mill plus some vitamins and other additional nutrients to help animals young and old to be some of the healthiest in the country.

Our local fishermen, based in Annan have again been visiting over Christmas and New Year and bringing in plenty of Scallops from the Isle of Man fishing grounds.

Our largest vessel for a while was the Wilson Fedje, not the longest at 89.93m but our second widest ever at 15.7m, and didn't even scrape the sides coming in!

Although very quiet to start with, Christmas and New Year ended up driving December to be our Busiest Month in 2020.

We are still working on improvements to the port, the dock gate repairs and upgrades are still ongoing, new replacement

walkways have arrived on site to replace damaged ones from Storm Eleanor in 2018 and will be fitted over the coming month. We have had some repairs done to the quayside at Berth 6 to allow the crane to work on that part of the dock and are now focussing on getting the new safety and security barriers working, moving the weighbridge owned and operated by D.A. Harrison and then a general tidy up around the port.

Discussions on moving the public access to West Beach have closed, the council are not able to support this move using the funds that were available as these have now been allocated to parking facilities in Allonby. However, we will continue to negotiate and discuss with the council as this new year unfolds and see whether this project can be resurrected at a later date.

We look forward to a slightly busier year than last and wish everyone a Happy and Healthy start to the year.

Silloth didn't have a very good month in January, plenty of TN Trawler activity, but only the two vessels at the beginning of the year.

Work has been ongoing on upgrading the dock gates, replacing the walkways on top of them with new galvanised ones and we are currently in the process of cleaning and painting the exterior of the gates. At the end of February we will attempt to replace the lower seals on the gates and retain more water in the dock when closed. Works on the weighbridge move have been slow due to the frost as they have not been able to pour concrete in the cold weather. Hopefully this will be done shortly.

Cargo levels are down for the



month, with only one fertiliser and one grain vessel arriving over New Year and sailing early in January.

We had hoped to be able to create a few new roles here at the port, however due to the land having been classed as SSSI, this may never happen.

This has been taken to a higher level within the company to see if we can get permission to use our own land. Apparently this is the case with a lot of our ports around the UK.

During February our old friend Zapadnyy returned, but didn't quite make it on her original call date due to strong and gusty wind conditions, finally aborting docking after her second attempt at entry into the port and returning to anchor off the Isle of Man for a few days until the weather abated. Her second attempt at arriving on the 25th went smoothly and she completed discharge and left within 24 hours to run to Bremen to re-load and return as soon as possible.

The Lady Astrid arrived and docked without issues, however, due to weather conditions took a few days to get her discharge underway. This was completed within 12 hours and she sailed in darkness.

The Eems Sun brought in some Potash on the 23rd, sailing as scheduled in the evening of the

26th to Belfast for a cargo to take back to Europe.

March, we had a visit from The Courageous a few times this month, bringing in Scallops and getting good catches too! Our old favourite, Zapadnyy popped in for a re-visit too, bringing much needed molasses for the sheep and cattle licks in the early months of the year. We had a visit from the CEG Universe bringing hardwood logs from Latvia for a local business in Longtown. Four cargoes of Fertiliser found their way to us, some taking more than one attempt to get in!

Around the port we are surrounded by many environmental special areas, with virtually the whole port being within the Silloth Dunes and Mawbray Banks SSSI, All across the Solway Firth are scattered small areas of protected species, mussels, cockles and the like, in and around the shores are Special Areas of conservation for Wildlife and birds and further up river are the Saltmarshes, another protected area called a Ramsar site. We live in a great area, with many amazing sights and sounds around us, but with this comes many restrictions preventing growth within the area as various Government bodies prevent use of or change of use of the land, near or within any of these special areas.

Silloth Golf is 89th Best in the World!



There are numerous Top 100 lists in circulation now and Silloth is lucky to be included in most of them, this helps to showcase our magnificent course to a wider audience.

In their February edition Today's Golfer magazine have compiled a list of the Top 100 golf courses in the World you can play.

What this means is that they have removed any courses that

the regular golfer can not have access to, so the exclusive members courses like Augusta, Pine Valley and Cypress Point are excluded from this list.

Even though these courses are not included to get into a world top 100 list means mixing with some serious golf courses and I am delighted to tell you that Silloth is ranked 89th in this list which is amazing.

Annual Michael Aird Boxing Day Fixture



Report by: Philip Scott

The annual Michael Aird Boxing Day fixture took place on 27th January when the old timers took on the youth of today.

After a lot of work by Ryan Hanley and Sam Brough they got a team together to take on the old boys.

Game started well for the vets when star striker Phil Scott was put clean through on goal and converted them both over the bar. Then the young ones got a bit of luck when old timer Trev Dowell put it into his own net.

Then the vets got going with three quick goals, two from Ryan the wizard Housby and peg leg Mally Graham which he then went on to get a hat-trick and the vets won 5-1.

Well done to the 23 players that turned up for the run out and Colin Baty for his work as well.

Tennis Coaching



Silloth Tennis Club are gearing up for a bumper summer.

After a very successful revival in the summer and winter of 2020 Silloth Tennis Club are set to resume their coaching and competition

activities this month. The club have seen some pretty lean times since the boom period from 2003 to 2012 and

it is good to see the younger population playing the game again.

The club have a few new committee members, are re-affiliating to the Lawn Tennis Association and are also looking to the older population to take to the courts again.

Junior coaching resumes from Friday the 9th of April at the courts and there is also a family session and adult beginner coaching from Tuesday the 14th of April.

All sessions will be delivered by Coach Robert

Jefferson with club secretary and Coach David Wise commenting; "Last summer saw our coaches deliver a fantastic programme called Tennis for Kids (now LTA Youth Start) with children receiving their own racket,



balls and 'T' shirt as well as lessons and things have snowballed from there with us using the

Caldew Hall before the last lockdown giving us the chance to kick on and revive the club. We are taking things slowly, getting the right people on board and looking to the future with a lot of optimism"

Junior coaching is on Fridays from 5pm to 7pm

Family session is on Tuesdays 5:30pm to 6:30pm

Adult beginners course is on Tuesdays from 6.30pm to 7:30pm

For further information please contact David on 07742 547767.

Silloth Tide Tables

APRIL 2021				SILLOTH				
Date	DEPTHS ON NEW DOCK GAUGE (1.8m ABOVE CD)							
	High Water				Low Water			
	Morning		Afternoon		Morning		Afternoon	
	Time	m	Time	m	Time	m	Time	m
1 TH	01 49	7.6	14 09	7.6	08 51	-1.3	21 16	-1.2
2 F	02 33	7.3	14 55	7.1	09 30	-1.0	21 55	-0.7
3 SA	03 20	6.8	15 48	6.4	10 14	-0.6	22 40	-0.2
4 SU	04 18	6.1	16 57	5.6	11 08	-0.1	23 42	0.3
5 M	05 34	5.4	18 27	5.1			12 27	0.2
6 TU	07 03	5.3	20 00	5.2	01 13	0.5	14 03	0.2
7 W	08 24	5.5	21 14	5.6	02 43	0.4	15 25	-0.1
8 TH	09 27	6.1	22 05	6.1	03 56	-0.0	16 30	-0.5
9 F	10 15	6.5	22 45	6.5	04 51	-0.3	17 20	-0.7
10 SA	10 54	6.9	23 19	6.8	05 36	-0.5	18 01	-0.8
11 SU	11 28	7.1	23 50	6.9	06 13	-0.7	18 34	-0.9
12 M	11 59	7.1		06 45	-0.8	19 03	-1.0	
13 TU	00 18	7.0	12 29	7.1	07 14	-0.9	19 30	-0.9
14 W	00 45	6.9	13 01	7.0	07 42	-0.8	19 56	-0.8
15 TH	01 15	6.8	13 32	6.8	08 11	-0.7	20 23	-0.7
16 F	01 45	6.5	14 03	6.4	08 41	-0.5	20 53	-0.4
17 SA	02 15	6.3	14 36	6.1	09 12	-0.3	21 23	-0.1
18 SU	02 48	5.9	15 15	5.5	09 46	-0.0	21 58	0.3
19 M	03 30	5.4	16 06	5.1	10 28	0.3	22 46	0.5
20 TU	04 30	5.0	17 19	4.8	11 30	0.5	23 57	0.8
21 W	05 56	4.8	18 52	4.8			12 58	0.5
22 TH	07 26	5.1	20 10	5.2	01 27	0.7	14 22	0.3
23 F	08 33	5.6	21 09	6.0	02 44	0.3	15 30	-0.2
24 SA	09 25	6.4	21 56	6.6	03 49	-0.2	16 28	-0.7
25 SU	10 11	7.1	22 39	7.2	04 45	-0.6	17 20	-1.1
26 M	10 54	7.5	23 20	7.6	05 36	-1.0	18 08	-1.4
27 TU	11 36	7.9		06 23	-1.2	18 53	-1.5	
28 W	00 01	7.9	12 19	8.0	07 08	-1.5	19 36	-1.5
29 TH	00 42	7.9	13 04	7.9	07 51	-1.5	20 17	-1.4
30 F	01 28	7.6	13 52	7.5	08 36	-1.3	20 59	-1.0

Times shown in UTC

MAY 2021				SILLOTH				
Date	DEPTHS ON NEW DOCK GAUGE (1.8m ABOVE CD)							
	High Water				Low Water			
	Morning		Afternoon		Morning		Afternoon	
	Time	m	Time	m	Time	m	Time	m
1 SA	02 15	7.2	14 41	6.8	09 19	-1.1	21 39	-0.7
2 SU	03 05	6.6	15 39	6.1	10 07	-0.7	22 28	-0.2
3 M	04 05	6.0	16 48	5.4	11 05	-0.3	23 31	0.3
4 TU	05 19	5.5	18 11	5.1			12 20	-0.0
5 W	06 39	5.3	19 33	5.1	00 54	0.4	13 41	-0.0
6 TH	07 53	5.5	20 43	5.4	02 14	0.3	14 52	-0.2
7 F	08 55	5.9	21 34	5.8	03 21	-0.0	15 54	-0.4
8 SA	09 43	6.2	22 15	6.1	04 16	-0.2	16 42	-0.5
9 SU	10 23	6.4	22 48	6.4	05 00	-0.5	17 21	-0.7
10 M	10 57	6.6	23 19	6.5	05 38	-0.6	17 55	-0.7
11 TU	11 30	6.6	23 49	6.6	06 11	-0.7	18 26	-0.8
12 W			12 02	6.8	06 43	-0.7	18 55	-0.8
13 TH	00 18	6.6	12 33	6.6	07 14	-0.7	19 26	-0.7
14 F	00 47	6.6	13 07	6.4	07 46	-0.7	19 56	-0.7
15 SA	01 20	6.4	13 41	6.2	08 19	-0.6	20 29	-0.5
16 SU	01 53	6.2	14 18	6.0	08 55	-0.4	21 04	-0.2
17 M	02 29	6.0	14 59	5.6	09 32	-0.2	21 41	-0.0
18 TU	03 13	5.6	15 49	5.3	10 16	-0.0	22 28	0.3
19 W	04 10	5.3	16 54	5.0	11 12	0.2	23 30	0.4
20 TH	05 24	5.2	18 12	5.1			12 24	0.2
21 F	06 43	5.3	19 25	5.4	00 45	0.4	13 39	-0.0
22 SA	07 49	5.8	20 28	5.9	01 59	0.1	14 46	-0.4
23 SU	08 47	6.3	21 21	6.5	03 06	-0.2	15 49	-0.7
24 M	09 38	6.9	22 08	7.0	04 07	-0.6	16 45	-1.0
25 TU	10 26	7.3	22 54	7.3	05 04	-1.0	17 38	-1.2
26 W	11 13	7.5	23 39	7.5	05 56	-1.2	18 26	-1.4
27 TH			12 00	7.6	06 47	-1.4	19 13	-1.4
28 F	00 23	7.5	12 48	7.4	07 36	-1.4	19 58	-1.2
29 SA	01 11	7.4	13 40	7.1	08 24	-1.3	20 44	-1.0
30 SU	02 01	7.1	14 33	6.6	09 12	-1.0	21 29	-0.6
31 M	02 54	6.8	15 29	6.1	10 02	-0.7	22 18	-0.2