



Speccy Sammy Bee
by Nathaniel Mossop from Silloth Primary School

Solway Buzz

www.solwaybuzz.co.uk

July 2013

local news - for you - by you - about you - free to you - local news

FREE PAPER

Issue 116

Page 4
Ofsted Success



Page 5
Border Concert Band



Page 6
Silloth Green Day



Page 7
Silloth 41 Club Donations



Page 8
Young Firefighters Pass Out



Page 15
Tennis Open Championship



Page 16
Hannah is County Champion



Silloth Mayor



New Mayor for Silloth: Tony Markley

After over twenty years as a Silloth councillor and nine years as deputy Mayor plus my role as County Councillor for the Solway Coast division I was encouraged by my fellow town councillors to take up office as Mayor of Silloth

I gratefully accepted this honour at the council meeting in May 2013 and I am pleased to announce the appointment of Stuart Graham who will ably assist me as Deputy Mayor together with my other councillor colleagues. We have a strong and able team to meet the town's requirements.

I would like to thank Ely Baty who has been committed and dedicated to guiding us all through some challenging times as the Mayor of Silloth over the last three years.

The town is moving forward with the

regeneration of the Green well underway. There are still lots to do on the Green with new information signage to be situated around the Green, construction of a new community garden and the proposed BMX track in the pines; these are all ongoing projects which will mature this year.

The long awaited refurbishment of the Criffell Street toilet block will be carried out later this year by Allerdale Borough Council (after long negotiations) then Silloth town council will take over the maintenance and cleaning of this facility as part of the new lease agreement between Allerdale Borough Council and Silloth town council for the Silloth Green.

The community centre has already had the outside refurbished and the next large renovation project will be to carry out extensive

Events

19th-21st July

Silloth Kite Festival

27th July

Abbeytown Carnival

18th August

Beach Half Marathon

23rd-25th August

Solfest

26th August

Silloth Carnival

5th-8th September

Silloth Music & Beer Festival

renovation work inside the main building which will require the work to be carried out in phases due to financial constraints the Town council has been put under financial pressure with the concurrent grant being dramatically reduced from Allerdale Borough Council for maintenance work within the town. As the local Cumbria County Councillor for Silloth and

the Solway Coast I have used part of my Councillor member allowance over the last two years towards this project (£10,000) which will hopefully result in the Town council carrying on the work with The Space committee to achieve some matching grants to continue this project.

There is a tremendous amount of good work been carried out by STAG,

and Friends of the Green (headed up by Anna Malina and Owen Martin) and I am looking forward to continuing to work together on these projects for the good of Silloth.

I will continue representing the town to the best of my ability and look forward to serving you as the New Mayor of Silloth for the ensuing period, thank you all for your continued support.



SOLDIERS in Silloth

Toy Soldier Experience

Fantastic for Families!

Open: Tues-Sun

Admission: Under 16 - £1. Adults - £2

Family ticket (2 adults 2 children) - £5

Criffell St, Silloth, CA7 4BZ

www.soldiersinsilloth.co.uk



Holme Low Web Site

Holme Low Parish now has a web site at www.holmelow-pc.org.uk. Holme Low is a particularly spread out Parish and the web site will hopefully make it easier for local residents to access information about the Parish Council. It is also packed with information about the parish, local services etc. This is the easy way to get councillors details, dates of meetings, read minutes of meetings and more.

For information the old way, the Parish Clerk is: Wendy Jameson, Holme Low Parish Council, 5 Burnswark Terrace, Solway Street, Silloth, CA7 4EF. Tel: 07775 686857.



Sneak-In Thefts

Report by: Inspector Kelly

Recently there have been a few sneak-in burglaries at homes in Allerdale and some have been in the Silloth area. Offenders have entered houses by insecure doors and windows and have stolen property including handbags, cash, mobile phones, laptops and keys.

Most happened during the evening or overnight, at houses where doors have been left unlocked or windows open. In some cases occupants have been at home but unaware of the burglary until later.

It would appear that some offenders are wandering the streets looking for insecure doors and windows. Nationally, over 40% of domestic burglaries are committed by opportunist thieves taking advantage of open or unlocked doors and windows.

Crime levels have fallen recently and dwelling burglary remains a relatively rare crime, but there are still some thieves out there looking for easy opportunities.

The good news is that by taking a few basic precautions, homeowners can reduce the chances of becoming a victim.

Crime prevention tips

- Whenever possible keep your doors locked and windows closed, especially if you are upstairs, or in another part of the house, or in the garden. Also we encourage people to fit, and most importantly use, good locks on ground floor and accessible windows.
- Remember to lock up even if you are only going out for a couple of minutes - that is all the time a thief needs.
- Before going to bed, close all ground floor and accessible windows and



Free Health Checks Spot High Blood Pressure

Thousands of people in Cumbria could be putting themselves at increased risk of heart disease or stroke because of undiagnosed high blood pressure.

It is estimated that around 25,000 people in Cumbria have undiagnosed high blood pressure. Public health experts at Cumbria County Council are encouraging people aged 40-74 years to take up the free NHS health check, which includes a blood pressure test.

Cumbria County Council funds the free NHS health checks which are delivered through GP surgeries and selected pharmacies. The free 'health MOT's' screen for heart disease, stroke, diabetes, kidney disease and dementia. The programme is designed to assess people's risk of developing these conditions and find them earlier, thereby reducing the chance of them turning into something more serious.

Patients are invited by their GP practice to receive a free health check as part of a five year rolling programme. Alternatively, people aged 40-74 years can visit a participating pharmacies and take the test in-store.

It takes around 20-30

minutes and includes a few straightforward health tests. Once a person's

Once the NHS Health Check has assessed a person's risk of developing one of the four diseases, they are given support and advice to help reduce or manage that risk and lead a healthier life.

Dr Rebecca Wagstaff, Cumbria's Acting Director Public Health, said: "Known as the 'silent killer', high blood pressure rarely has obvious symptoms. Around one in three people have high blood pressure but many don't know it. If left untreated, high blood pressure increases your risk of a heart attack or stroke. If you're aged 40-74 years, the free NHS Health Check includes a blood pressure test and people who are invited to receive one should take it up. Adults of all ages should have their blood pressure checked at least every five years. If you haven't had yours measured, or you don't know what your blood pressure reading is, ask your GP to check it for you. Having high blood pressure can be prevented by eating healthily, maintaining a healthy weight, taking regular exercise, drinking alcohol in moderation and not smoking."

Safe Sizzling Tips

With warmer weather finally upon us and outdoor eating back on the menu, Cumbria County Council's Fire and Rescue Service is issuing tips for safe barbecuing.

During warmer spells, grass and vegetation are generally dry, which means if a fire is accidentally started outdoors it can spread rapidly, damaging or destroying whatever's in its path. Following a few simple rules however, can prevent disaster and ensure barbecues are safe and enjoyable.

These rules include:

- Follow the safety instructions provided with disposable barbecues.
- Never use a barbecue indoors or in a tent, even after the flames have died down. Even if barbecues are not flaming they can continue burning and could lead to carbon monoxide deaths if used indoors.
- Never leave a barbecue unattended.
- Make sure your barbecue is well away from sheds, fences, trees, shrubs or garden waste.
- Use enough charcoal to cover the base of the



barbecue, but not more (normally around 5cms or 2 inches).

- Keep children, pets and garden games away from the cooking area.
- After cooking, make sure the barbecue is cool before moving it.
- Empty ashes onto bare garden soil, not into dustbins or wheelie bins. If they're hot, they can melt the plastic and cause a fire.
- Enjoy yourself, but don't drink too much alcohol if you are in charge of the barbecue.
- Always keep a bucket of water, sand or a garden hose nearby for emergencies.

Cumbria's Chief Fire

Officer, Dominic Harrison, said: "Now the warmer weather is here, the number of barbecues across the county will no doubt increase. Using petrol to light your barbecue or leaving it unattended are two of the most common mistakes people make. Every summer this results in firefighters being called to fires caused by barbecues that have got out of control. While of course we want people to enjoy themselves and don't want to ruin anybody's fun, we do want those having barbecues to be aware of the potential fire dangers and take a few simple steps to keep them and their guests safe."

Local Transport Services

Community Bus FOR HIRE to Groups or Charities

Contact: Dave: 016973 31785 Lawrence: 016973 31257

The Good Companions Residential Care Home

Long & Short Term Stays in Single En-Suite Rooms
Meals on Wheels service available locally



www.gchc.co.uk

Criffel Street ~ Silloth ~ tel: 016973 31553

SPOT ON Entertainment

Top Secret Roadshow by Top DJ

Eric Stanwix Jnr

Pop Rock Guitarist

Graham Brown Experience

Mr Soul & Motown Rock n Roll

Stevie Vegas

Top Multi-Talented Quality Duo

Heartline

70's 4 piece Classic Rock Band for all Songs

Sarah & the Stormchaser

Childrens Entertainer, Balloons, Magic & Party Dances

Mr Wond

New Kid on the Block

Sarah Kent

All acts can be booked separate or mixed and matched to suit the budget We specialise in Weddings and all Family celebrations, eg: Christenings to Funeral Wakes or any Fundraising Event, also Carnivals & Village Halls catered for

Tel Eric: 07736 774788 * Email: ericstanwixjnr@stanwix.com



Portraits and Commercial Photography

Photography by Peter

Tel: 016973 32180



Get Active for Mental Wellbeing

People across Cumbria are being encouraged to consider the benefits of physical activity for their mental wellbeing.

The call is being made by Cumbria County Council's public health experts who want to promote physical activity and the potential it has to improve happiness and reduce mental illness. More than 50,000 people in Cumbria are registered with depression.

Evidence shows that there is a link between being physically active and good mental wellbeing. Physical activity can help people with mild depression. Evidence shows that it can also help protect people against depression and anxiety. Physical activity is thought to cause chemical changes in the brain, which can help to positively change our mood.

Some scientists think that being active can help improve wellbeing because it brings about a sense of

greater self-esteem, self-control and the ability to rise to a challenge.

People who want to get active are encouraged to find activities that they enjoy, and then make them a part of everyday life. This can include anything from, walking all or part of a journey to work, ditching the car for short journeys, getting off the bus or train one stop early, planning longer walks at the weekends, cycling or taking up a sport.

Dr Rebecca Wagstaff, Cumbria County Council's Acting Director of Public Health, said: "Research shows that exercise influences the release and uptake of chemicals in the brain that make you feel good. From simple daily changes like walking for twenty minutes or tending your garden to running a marathon, physical activity can significantly improve your quality of life."

Scam Alert!



Trading Standards are urging residents to be on the lookout for an inheritance fraud scam which has already targeted people in the County.

The scam involves a letter which claims to come from a private investment manager from China. They tell you that a person sharing your family name has died and left behind money. None of the deceased person's relatives have claimed the inheritance. As a result, the money will go to the government. The investment manager suggests that, because you share the same family name as the deceased, he could pay the inheritance to you.

However, there is no inheritance and the person contacting you is not an investment manager or legal official. If you respond to the fraudsters, they will ask you to pay various fees – for example: taxes, legal fees, banking fees etc – so they can release your non-existent inheritance. The letters have an email contact which is a ymail.com address with Chinese lettering above it.

If you receive one of these letters please report it as a fraud at www.actionfraud.police.uk or telephone 0300 123 2040.

For general advice please contact Trading Standards via the Citizens Advice Consumer Helpline on 08454 040506 or visit www.adviceguide.org.uk.

New Florist in Wigton



Since the closure of Fearon Flowers in Wigton due to Jean's retirement Florist Judith Butterfield was left with nothing to do.

Judith has been a florist for 35 years, 15 of those in Wigton and she knew that the town still had a need for a quality florist. So - she has taken a big step forward by opening her own shop in what was previously the Lightfoot electrical premises at 10 King Street.

Judith said "I opened Rainbow Flowers in Wigton on 9th May and I intend to create floral designs for all occasions, including weddings, sympathy, anniversaries, birthday's, in fact anything that warrants the gift of beautiful flowers. I take great pride in creating personal orders, nothing is too much trouble, perfection is my middle name. I pride myself on the quality of my flowers."

The shop is open seven days a week and takes telephone orders for delivery anywhere in the CA7 area. All major credit and debit cards are welcome.

The competition winners name will be in the Buzz.

Win this Beautiful Bouquet of Rainbow Flowers



Rap Bee by Jack Harrison from Holm Cultram Abbey School



CALOR GAS AGENTS

HARRISONS STORE LTD
ABBEYTOWN

(discounted prices)

(free local delivery & connection)



Tel/Fax: 016973 61231, M: 07972 805074

ANIMAL & POULTRY FEED

HARRISONS STORE LTD
ABBEYTOWN

(farm deliveries)

(hay & straw available)



Tel/Fax: 016973 61231, M: 07972 805074

Cushions & Covers,



Upholstery, Blinds, Curtains, etc.

Whatever your furnishing needs, ring Irene on 016973 31836

Kirkup & Sons Butchers

Try Our Special Pies and Sausages

All Our Meat is Locally Sourced

15 Eden Street, Silloth, CA7 4AD

Tel: 016973 32000



Rainbow Flowers

Designs by Judith

Beautiful, quality fresh flowers for every occasion

35 years experience in floristry

Telephone orders welcome, same day delivery

Open 7 days, Monday – Friday 9am to 4:30pm
Saturday 9am to 2pm, Sunday 10am to 2pm

10 King Street, Wigton, CA7 9DT
Tel: 016973 43434

RAINBOW FLOWERS Competition Entry Form

What date did the shop open:

Your name and address inc PostCode:

Telephone:

Post your answer to arrive by 19th July to:
Rainbow Flowers, 10 King Street, Wigton, CA7 9DT

Ofsted Success



Mrs Render & Ms Stainton (Executive Head Teachers), Mrs Notman, Mr Charters and junior children from Holm Cultram Abbey CofE School

Report by: Chrisy

Mr Alan Lindsay, Senior Manager - Learning Improvement, Children's Services, Cumbria County Council, visited the school following their recent successful Ofsted inspection.

Mr Lindsay said "I would like to commend the school on the rapid improvement made and congratulate the staff and Executive Head Teachers on the work they are doing on behalf of the children of

Holm Cultram Abbey C of E School."

A full copy of the Ofsted report can be viewed at: www.ofsted.gov.uk/inspection-reports/find-inspection-report/provider/ELS/112249.

A595 Delays

Cumbria County Council and Connect Roads are set to work together to carry out improvements on stretches of the A595, starting in June 2013.

The surfacing works will take approximately two weeks and to minimise disruption to traffic, only short sections of the A595 will be closed at any one time and for as short periods as possible minimizing the need for diversions.

Cumbria County Council and Connect Roads are discussing options including temporary signals, convoy working, and permitted 20 minute site delays to avoid closing the road to local traffic.

Andrew Moss, Assistant Director for highways, said: "This piece of work will bring huge improvements to key parts of the road network in West Cumbria and road users will no doubt see the difference across this popular stretch of road. Together with Connect Roads we will do all we can to keep the traffic moving as smoothly as possible. We will ensure continued accessibility and safety and try to create the least disruption possible for local communities and businesses."

Two Convicted of Drugs Offences

Two Silloth men have been convicted of drug offences after a successful investigation by local police.

Shane Housby, aged 25, from Caldew Street, Silloth appeared at Carlisle Crown Court on Wednesday 15th May charged with possession of a Class B controlled drug, namely Cannabis with intent to supply. He received a 12 month suspended sentence, 160 hours community service order, an electronic tag for four months with a 7pm to 7am curfew and a fine of £500.

Tommy Nichol, aged 18 from Mary Street, Silloth appeared at Carlisle Magistrates court in January. He was charged with possession of Class B drugs namely Cannabis. He received a fine of £270.

PC Robertson, local Silloth community patrol officer, said: "We will not tolerate illegal drug use in our communities. Some believe that they will get away with it in more remote

areas, however this is not the case. Silloth has a very low crime rate and the police in Allerdale Rural Neighbourhood Policing Team will continue to work hard with the Community and Partner agencies to ensure that crime continues to remain low and drug offences are further reduced. We always seek the help of our local residents to assist in the battle against drugs. The information that they can provide help us to identify the problem areas and the people who are involved in drug relation crime is invaluable. With this knowledge we can take the action to bring these people to justice or find them the help and assistance they need."

Anyone with information about drug use in their local area can contact Cumbria Police on 101 and report any suspicious activity. Alternatively they can contact Crime Stoppers anonymously on 0800 111 555.

Cold Callers Warning

Cumbria Trading Standards are warning of cold callers in Cumbria. The callers are distributing leaflets and offering to do work on driveways. Cumbria Trading Standards advice to residents is to always obtain local quotes before ever considering accepting work from any cold callers of this type, even if offers are made by the cold callers on the day. Alternatively ignore the cold callers and dispose of their leaflet. Please remember if you do sign a contract you have seven days "cooling off" period in which to cancel if you so wish.

To find a reliable and reputable trader use the Trading Standards approved Buy with Confidence Scheme www.buywithconfidence.gov.uk www.buywithconfidence.gov.uk/sitepages/bwchome.aspx The Trading Standards Nominated Neighbour Scheme is designed to let a trusted neighbour, relative or friend help an elderly or vulnerable person to deal with unexpected or unrecognized

callers at their door. The resident will be given a card to show to the unknown caller, containing the contact details of their nominated neighbour. The idea is that the neighbour will be contacted to either verify the caller's identity or, if still unsure as to whether they are legitimate or not, to

arrange an appointment for another time, which genuine callers will be happy to do. If you have any information on cold callers, wish to report an incident or are interested in the above Schemes please contact Trading Standards via the Citizens Advice Consumer Helpline on 08454 04 05 06.

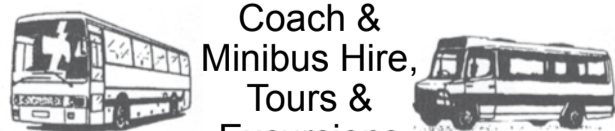
The Queens Bed & Breakfast
Full en-suite rooms ~ Sea Views
Call: 016973 31373, Mob: 07753 859403
email: moregain@tiscali.co.uk
The Queens, 1 Park Terrace, Silloth

Cumbria Caravan Supplies

- Caravan Spares & Accessories
- Tobacco & Confectionery
- Stationery & Gifts • Newsagent

We have moved to:
King Street Newsagent, Wigton
Tel: 016973 42428

CARRS COACHES



Coach & Minibus Hire, Tours & Excursions
Tyres, Servicing & Repairs

Control Tower • The Airfield
Silloth • CA7 4NS
Tel: 016973 31276

Local Links Donation



Silloth Local Links staff would like to thank all our customers who helped raise £112 for the Eden valley Hospice during our recent "Cup Cake" event.



Waitress Bee by Sophie Graham from Silloth Primary School

Sunset Leisure Centre Term-Time Specials*

After School Swimming Session **Toddler Swimming Session**

Monday—Thursday* - 4pm—6pm* Monday—Friday* - 10am—2pm*
Prices from £2.70/Child & £3.70/Adult* Prices from £2.70/Adult*

NEW Soft Play Area Included!

Term-Time Only. Further Terms & Conditions do Apply. Please ask for details.

STANWIX PARK Holiday Centre 016973 32666

www.stanwix.com Silloth, CA7 4HH



Wigton Medical Practice Closures

Wigton Medical Practice will be closed for Staff Training from 1pm
Wed 12th June, 17th July,
Thurs 19th Sept, Wed 16th Oct, 15th Jan and Thurs 20th March 2014.

Eden Street Shelter

Silloth-on-Solway Town Council have recently been requested to provide seating in the Eden Street bus shelter for the benefit of passengers waiting for the bus. In the past however we removed the existing seating, as there had been complaints received from neighbouring residents about the noise from youngsters, who were gathering at the bus shelter

on an evening.

The Town Council would like to ask for the opinions of local residents, so that they can ascertain the best course of action. It would be helpful if you could drop a line to the Town Clerk, Wendy Jameson at 5 Burnswark Terrace, Solway Street, Silloth, CA7 4EF. Tel: 07775686857 Email: townclerk@silloth-on-solway.co.uk

Mothers Union

Report by: Gladys Temple

The May Meeting was held in the Tea Room at Abbeytown led by Branch Leader Brenda Sim who welcomed visitors from Bowness and our Speaker Cathy Howe with her husband David.

Prayers were taken by Freda Garner and Maureen Gibson.

Apologies were received from Gladys Temple, Connie Brown, Rev David Tembey, Lynne Tembey, Muriel Studholme and Eileen Todhunter.

Cathy Howe Coordinator of Carlisle Street Pastors introduced herself and went on to describe the work of the group. Street Pastors is an inter-denominational organisational and there are nearly 300 groups of street pastors in existence. The youngest is 21 and the eldest 82 years of age. Street Pastors need to be able to listen, care and help but must not preach about God. They go out in groups of four on Saturday nights between 10pm and 4am. They mostly encounter daftness not violence and persons who have had too much to drink. Pastors offer help to strangers who have come from away and get lost. Another problem may be females who have had

property taken from their bag. Pastors wear a uniform, hats must be worn at all times and carry a rucksack packed with essentials including blankets for warmth, lollies (ice breakers and sugar rush), water, flip flops, two-way radio linked to the police, tissues, first aid kit, notebook for record purposes, torch, bible, bottle stoppers (to avoid drinks being spiked) and a list of agencies for referrals. They also pick up items which could be potential weapons, such as bottle, glass, etc.

There is an online prayer leader and a prayer sheet is sent out each week with lots of prayers going on within Street Pastor Groups. They also distribute a card supplied by the Police with reminders on to people to keep themselves safe when they are out.

They raise their own funds and recruit their members from churches.

David Howe regaled members with some of his experiences as a Senior Pastor. It costs £350 to train a Pastor and David handed out leaflets describing the work they do and asked for prayers for Cathy and all the Street Pastors.

Anita Norman thanked Cathy and David for a very

Border Concert Band in Silloth



Photo by: Bryan Rothwell

Report by: Lawrence Marshall

A concert was held in Christ Church on 11th May with the Border Concert Band. This is Carlisle's premier concert band with 30 players.

The band played a wide range of music; Military, Big-band, Jazz and Classical. The Band-master is Alan Branstone who during his service with the Grenadier Guards Band played many

state occasions including the Trooping of the Colour. Some 90 people attended the evening raising £551 for church funds. Thank you to the ladies who served the refreshments during

the interval. The band is sponsored by Carrs Milling Industries. The concert was well received and Canon Bryan Rothwell gave the vote of thanks.

Town Council Vacancy

There is a vacancy on the Town Council. If anyone is interested in becoming a Town Councillor please write to the Town Clerk, Wendy Jameson at 5 Burnswark Terrace, Solway Street, Silloth, CA7 4EF. Tel: 07775 686857. Email: townclerk@silloth-on-solway.co.uk. Letters to be forwarded to the Clerk by Monday 1st July 2013.

interesting and illuminating talk and emphasised that the Mothers Union will keep the Street Pastors in their prayers.

The Outing to Wreay will leave at 6pm on 25th June when there will be a tour of Wreay Church followed by a meal at Curthwaite Pub - names to Maureen Gibson.

The annual outing will be on 7th September and suggestions were requested as to where to go. Gladys thanked everyone for the lovely plant she received after her recent operation.



Playground Bee by Ella Dean staying at Midtown Farm Caravan Park

Drinking Bee by Josh from Holm Cultram Abbey School

BOWEN THERAPY

a gentle 'hands on' body treatment for many painful conditions, stress management and health maintenance

by Lynn Devine Cert. ECBS
Tel: 016973 31632

'Lynnwood', 5 Pine Terrace, Silloth, CA7 4DT

WILLIAMSON FENCING SUPPLIES



GARDEN GATES & FENCES
Professional Installation

HYDRAULIC HOSE MANUFACTURER

Plywood Sheets, Railway Sleepers, Decking, Posts, Strainers, Square Timber Rails, Galvanised & Wooden Gates, Purlins, Wire Staples Sawdust & Shavings

Plasson Water Fittings

Stocking all Galvanised Livestock Equipment, Gates, Feeders, Cubicles, etc

Stank End Farm, Abbeytown, CA7 4PW
Tel: 016973 61044, Mobile: 07711 144050

Wallsend Guest House and Tea Room



Four Star ETC rated bed and breakfast. Tea Room open daily 2pm to 5pm April to October and available for private functions.

The Old Rectory, Bowness on Solway, CA7 5AF
Tel: 016973 51055 * www.wallsend.net

COMPUTER PROBLEM? No Problem

We are your local specialists for:
Internet Problems Printer Problems
Wireless Networking
Computer Running Slow
Advice for New Computers

Mark Hansford Computer Services
016973 32089



www.MARKLEY.co.uk

Telephone:
016973 33820
016973 31276
07720 560595

= STORAGE & PARKING =
CCTV Secured Storage ~ Containerised Storage
Business Outlets ~ Indoor & Outdoor

Caravan Storage & Parking

£200 per annum or £20 per month
why tow? when you can stow!

Silloth Green Day

Bill Asbury said "As one of the local artists I decided to set up my easel at 11am in front of Christ Church on Silloth Green Day. It was bright and sunny with quite a breeze and a few people were beginning to arrive. Artists often get lost in their work, so I didn't notice what was going on around me until about mid-day. Quite a few folks I know were coming out of church, after the Sunday morning service, and they started to ask me about the painting I was working on and discuss the different examples of art work on display. It was then that I noticed the buzz (no not the newspaper) of excitement and general atmosphere of enjoyment taking place on the Green and also in front of Christ Church. Families, young people, elderly people, hikers with rucksacks at the ready, even our local community bobby, with



that big smile, passing along the pavement stopped to look and chat. Eventually I got back to work, but more and more people stopped to look.. At this point I heard the news, on the loud speaker, that a young lady guest singer was coming on stage. I enjoyed most of her music and it made a pleasing background to my painting. Quite a few people asked, "where was the nearest toilet" or "the nearest cash point" and "the best place for a cup of tea". I answered all the questions and even told them that there was a free cuppa going in Christ Church. I popped inside myself and was amazed to hear some good old time tunes being played beautifully by Derek on the large pipe organ. It was a day of contrasts, musically as well as the people who passed by! Just to mention a few. I chatted and answered questions from families and others from Leeds, Durham, Manchester, Newcastle, and nearer home, Whitehaven, Carlisle, Wigton, Westnewton etc.

May I say a big thank you to all those who must have put hours of work into planning and administrating what was a wonderful time for all the family.

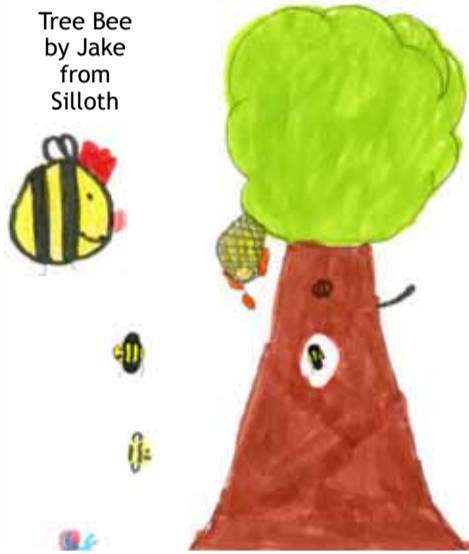
At about 3:15pm, the wind came up and my easel blew over and one

of the hinges snapped off (easy to repair). So I decided it was time to call it a day. I knew that at 4pm there was to be a musical event in Christ Church with the team Choir taking part. It was a super end to my day, singing some of those golden oldies (hymns), with special items by the Solway Team Choir. They were so full of enthusiasm, with lots of oomph! Oh, didn't I mention it ... I also love to sing and am a member of the Team Choir!

Note to the Buzz editor... re- your question (at about 11:30am) about finishing the picture that day. Yes I almost completed the picture, until that wee blast of wind stopped me in my tracks.



Tree Bee
by Jake
from
Silloth



Solway Beach Half Marathon

FIRST TIME EVER.

There is only ever one first time! Remember it?

On Sunday 18th August, STAG are organising the first Half Marathon to be held in the area.

The run is classified as an easy multi terrain half marathon and runners will start on the cobbles of Station Road, then onto tarmac and concrete as the course skirts the Dock boundary fence. Following the unmade cinder track runners will finally emerge onto shingle and the sand, yes the glorious sand, all the way to Dubmill point and back.

The area is classified as an Area of Outstanding Natural Beauty and as you pass through it you will see an array of flora and fauna second to none and seabirds will be waiting to see you.

The course is designed to avoid the Scars or (stoney sections as we call them) on the beach giving a run on a level hard surface.

You will pass through the 'Solway Petrified Forest' and depending upon the sand levels could very well see roots, stumps, and trunks

that have been there for thousands of years. To bring you up to date you will pass the rocks to which witches were chained at low tide in years gone by.

The run will go almost as far as 'Dubmill Point' where our second Service station is sited, the first one being adjacent to Beckfoot.

For the less adventurous or those who suffer after a Saturday night we are organising a relay whereby four runners will form a team and run just over three miles each over the same course. Changeover points will be at Beckfoot and Dubmill.

This is your chance to raise sponsor money for charitable causes and if you have no special charity in mind, could we our suggest our partner for the event, which is the Air Ambulance.

A surprise visit is being planned and we welcome Access 4 Wheelchairs who are travelling up from Crawley in West Sussex to demonstrate their award winning 'All terrain' wheelchair.

A lot of work has gone into the preparation of this

Arthritis Support

Report by: Gladys Temple

Fourteen Members met at Loveday House for the June meeting of the Arthritis support Group. Apologies were received from Mary Harrison, Brenda Earl, Edna Marper and Margaret Armstrong.

Christine Smithson welcomed John and Eunice Hamblin who gave us a wonderful talk about Peter Collinson and John Bartram who were the first Botanists to collect and share seeds in the 1700s. Peter was in England and John was in America and wrote to each other for 35 years without ever meeting yet grew exotic trees and plants to share. We were shown photos of both men and also of others

who encouraged them in their work, then lots of flowering shrubs and trees they exchanged. Lots of the beautiful gardens in this country were set off with plants they had found.

We found the talk both interesting and informative and Christine thanked John very much for coming.

Anne Fee and Catherine Cheetham served refreshments and Heather Hadley won the raffle.

Names and deposits were taken for the Community Bus for 2nd August when we are going to Salter near Ennerdale. There will be no meeting in July so anyone wishing to go on the outing needs to get in touch with Gladys.

Can You Help?

Community Hall Luncheon Club - We are desperate for drivers (male or female) to drive the Community Bus on a Monday, to collect pensioners in the Silloth area and take them to the Community Hall for lunch.

We now only have one driver, and if we cannot find any others, **the community meals may have to finish.**

We have been supplying pensioners meals for many years, and to stop would be a disaster.

If you are under 70 and are free on a Monday from 11:15am to 1:30pm, could you spare the time and

give us a hand. You will be provided with a meal, and the company is very good!

We could do with some more helpers to put the food out. The meals are prepared and cooked at the Senior School, and delivered to the Hall. The helpers lay the tables etc. Put the meals out and make the pensioners a cup of tea, coffee, etc. The main dishes are washed at the school.

If you are two friends and have spare time on a Monday (During School Term) could you help?

Please ring Lawrence Marshall on 31257 or Betty Walton on 31030.

event to date and there is still much to do but we are pleased with the response we have had to date and would like to offer a few thankyou's.

Thanks are already being made to the Police and Highway Department to allow us to stage the event, the Associated British Ports for allowing us to pass over their land. Thanks also to the Cumberland Building Society for the use of the start/finish gantry and to them and Arnold Palmer for pledging financial support to help stage the event. Other sponsors are in the pipeline but have not as yet committed themselves.

Thanks also to Wigton Athletic club, its members and to other people who have competed in Marathons all over the Country without whose knowledge and help this would have been impossible. Likewise with the team of three from Scotland who are now taking bookings on line and will be recording the electronic time keeping on the day. Thanks also to Alan Quayle for updating our Web Site www.sillothonsolway.com to take orders and for the

production of our leaflets now being distributed.

Also to the Solway Buzz for providing advertising. Thanks to STAG members who, without their voluntary work, none of this and other events would be possible.

We hope that those taking part will enjoy the event and as our visitors from Scotland said do you really appreciate what you have here. If this event is successful, you have a golden opportunity to stage a full Marathon to Maryport, a 'Point to Point' and other events on the beach.



Silloth 41 Club Donations

Report by:
Brian Thackeray
President
Douglas Walton
Treasurer

Silloth
41 Club
(formerly
Silloth Round
Table) has
donated
cheques for
£50 to Silloth
Junior Rugby
Club and also
Maryport Sea
Cadets.

The
funds were
raised from donations to
the Wishing Well which is
situated on the Green.

The Club has successfully
used this source to donate



funds to many youth
clubs and youth sports
organisations in Silloth and
District for approximately
30 years.

We would like to express
our gratitude to both local
people and visitors for
their donations enabling us
continue this project.

Obituary Councillor Bill Allison

Report by: Mayor Tony
Markley & Colleagues

The news of Bill's death
on Wednesday 5th June is
a great loss for his family
and friends. It is also the
community of Silloth who
have lost a loyal servant and
friend for the town. Bill has
worked tirelessly over many
years as a Town Councillor.

Bill worked in the
planning department at
Allerdale Borough Council
where he gained vast amounts
of local planning and design
knowledge before starting
his own design consultancy
business in Silloth. By
using his expertise in the
planning application and
his building development
skills, Bill assisted many local
companies and residents
throughout Silloth and
Cumbria move forward to
gain their planning consents.

Bill continued his
working life by purchasing
the Albion Inn with Wendy
and their outgoing and open
personalities made this
local pub very popular. It is
extensively used by locals
and visiting tourists who
can be assured of a friendly
welcome, great conversation
and where a good day's (and
evening's! entertainment)
can be had by all and, indeed,
regularly was.

During his busy working
life Bill served Silloth as
Town Clerk in the 1980s, he

flows and distance caused
them to miscalculate the
amount of fuel they would
need.

Silloth's RNLI Atlantic
85 'Elaine and Don
Wilkinson' was quickly on
the scene where they took
the casualty vessel in tow
and brought it safely back to
the slipway at Silloth. The
weather and sea conditions
were very good and all were
returned safe and well.

Helmsman, Mick
Satterthwaite, complimented
the crew on the speedy
response to the service and
the way in which they dealt
with the incident.



Bill Allison

then went on to be elected
as a Councillor for Silloth in
May 1999 with a fine record
up to the present day. He
took up office as Deputy
Mayor in 1999 for one year
continuing to be Mayor of
Silloth from February 2000
to October 2003 then a
further spell from April 2004
to May 2005. Bill pursued his
Councillor career serving this
community by being elected
in 2005 to serve Silloth and
the Solway Coast as the local
Cumbria County Councillor
member for this division.

Bill was Chairman of
the Silloth Regeneration
Partnership in Silloth
Town Council for the
past ten years. His tireless
commitment and ability
to work with the local
community and public sector
by convening numerous
meetings, producing
local plans, filling in huge
amounts of tender forms
and legal paper work finally
came to fruition with the
winning of the £1.5 million
Heritage lottery bid for
the regeneration of Silloth
Green.

Bill continued using
his valuable knowledge by
overseeing the construction

and addressing many
issues around this massive
regeneration project on the
Green. His determination,
expertise and commitment
definitely enabled this project
to be achieved.

Bill Allison was an
ambassador for the town,
he served the community
of Silloth impeccably and
will be greatly missed
by all members on the
Town Council and by the
community he has served
so well and for so long. We
know his name will always
be linked to the legacy
and outstanding work he
achieved on the Green and
around many other Silloth
projects and we will ensure
that this is marked in an
appropriate way.

Bill never had a bad word
to say about anybody, he
was well liked and respected
within the community.
I write these few words
as Mayor of Silloth, on
behalf of my fellow town
councillors and members
of the community, but also
as a personal friend and
colleague of Bill's. It is a sad
day and our thoughts go out
to Wendy and family at this
most difficult time.

Silloth Lifeboat Rescues



Report by: Sue Kent

On Saturday 25th May
Silloth RNLI launched to
assist Maryport Rescue Boat
with the Annual Trawler
Race held in Maryport.

The trawler race was a
huge success with a beautiful
sunny day and it passed
without incident.

With Maryport Rescue
Boat safely recovered and set
to enjoy the rest of the day
themselves, Silloth lifeboat
headed home. They got as far
as the Beckfoot Buoy when a
call came through from the
Coastguard, tasking them
to assist a boat with engine
failure due to a propeller
problem, just off Flimby.

They arrived on scene to a
find a 21 foot fishing trawler
with one person on board
who was in good spirits.

A tow was established
and the trawler taken back
to Maryport Harbour
where it was secured and
passed over to the awaiting
Maryport Coastguard and
Silloth lifeboat returned
back to station.

Newly appointed
Helmsman Steve Wright
said "Visibility and sea
conditions were good and
the crew did an excellent
job, which was made more
difficult with a rapidly
ebbing tide in the harbour at
Maryport."

On Wednesday 5th June
a County Durham couple
in their small cabin cruiser
'Abigail' were towed to safety
after running out of fuel
near to the Beckfoot Buoy in
the Solway Firth.

The couple launched
their boat from the slipway
at Silloth earlier in the
day, with the intention of
cruising around the Solway
Firth. Unfortunately, they
underestimated the amount
of fuel they would need, due
to the very strong current
once the tide had turned and
began to ebb. These currents
are particularly fast in and
around the Solway Firth
area.

Although they were
well prepared having
lifejackets, vhf radio,
etc., (even their dog was
wearing a lifejacket!) their
inexperience regarding tidal

HAIR AT HOME

Clair's Mobile Hairdressing will pamper
you in the comfort of your own home

For information or an appointment - Call Clair Todd on:

Tel: 07754 523451

Free Consultations Available

THE CHARITY SHOP

Eden Valley Hospice
Cumbria Air Ambulance
Marie Curie Cancer Care
Macmillan Cancer Support
North Lakeland Hospice at Home
Silloth Nursing Home

(Good Causes, Silloth)
1 Queen's Court
Criffel Street
Silloth

Tel: 016973 31696

Closed Mondays

Your support is greatly appreciated

Sandra Hickebottom
MCFHP DipFHT MAFHP

Foot Health Professional

Flexible Home Visits
All Foot Problems Treated
Corns, Callous, Ingrown
Toenail, Verrucae, Diabetic
Foot, Nail Cutting
Fully Qualified and
Registered For 16 Years

Tel 016973 61440
Mob 07951 312513

Fruit Link Home Delivery

Local Produce
W'sale & Retail
Top Quality
Fruit & Vegetables
Groceries & Plants

13 Station Rd, Silloth
016973 32611
07542 488750

Chiropractor

The Dental Surgery
Half Moon Lane
Wigton

Examination,
diagnosis.
Treatment for back,
neck pain, headache,
sciatica, sports injuries

Tel: 0845 643 9224
Reception Mon - Fri
8.30am - 6pm

wigtonchiropractic.co.uk

BEACON



Open Surgeries
Silloth 1:30pm-2:30pm
Aspatria 6pm-7pm
Appointments at other
times by arrangement
016973 20242

Silloth Young Firefighters



Silloth Young Firefighters demonstrating how to extinguish a blaze

Young firefighters have celebrated completing their training scheme with a passing out parade at Silloth Fire Station.

The group of 11 teenagers marked finishing the Young Firefighters course on Saturday 18th May where they performed hose drills

and other Fire Service exercises in front of family, friends and instructors before being presented with certificates of achievement by Cumbria's Chief Fire Officer, Dominic Harrison.

The young firefighters are in Year 10 at Silloth Community Technical

College and met up once a week for three hours over a 10 week period. They experienced a range of Fire Service activities including pump and ladder drills, HeartStart training and team-building.

Cumbria County Council's Fire and Rescue

Service runs Young Firefighter courses to help young people build their self-confidence and improve their communication skills and teamwork.

The course has been running at Silloth Fire Station for five years and is due to run again next year, don't miss this experience.

Volunteers Required



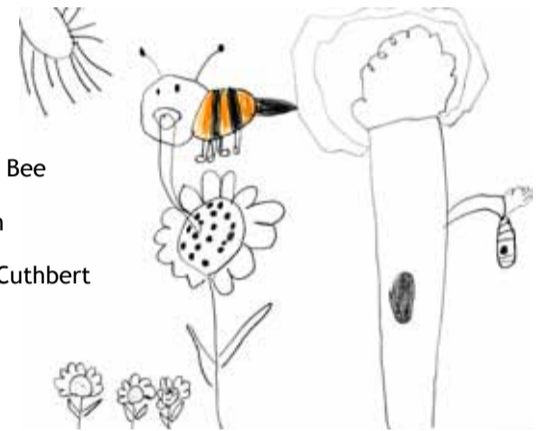
Soldiers in Silloth toy soldier experience has been open during all the holiday periods this year and attracted plenty of visitors. One of the things they comment on in our visitors' book is the friendliness and helpfulness of the staff, who are all volunteers and include both men and women.

Unfortunately some of those who joined the team when we first opened in 2012 have had to drop out and we are looking for more people who might spare some time to man the counter and talk

to visitors. If you or your friends would like to help out we'd be very pleased to have you.

We will be open from July to September from 10am to 4pm Saturday and Sunday and from 1pm to 4pm Tuesday to Friday. The rest of the year we open only at some weekends and during school holidays. Duty sessions are usually three hours long and require two people to be present.

For more information call Margaret Pickering on 016973 33068.



Lucy Dudy Bee by Cody Allen from Holme St Cuthbert School



Store Bee by Darci Slack from Silloth Primary School



Park Bee by Jessica Williams from Holme St Cuthbert School



Mary Queen Bee of Shops by Charlotte Harrison from Holme St Cuthbert School

Blencogo Village Hall Annual Produce Show

Saturday 7th September 2013 in Blencogo Village Hall

Entries accepted between 10am until 11:30am

Hall will be open to the public at 2pm.

Tea and cake served in the afternoon followed by Presentation of Trophies by Mr Harry Douglas and sale of gifted Produce. Entry 50p Tea and cake £1

For more information or entry programme

please contact Judith on 016973 61051 or Linda on 07538027936

Collection points for entry forms : Harry Douglas at School House, Bromfield

Mary Rudd at Forge House, Langrigg

Blencogo House Farm Shop ----- Beck Farm Shop Wheyrigg

Harrisons Garage at Waverton ----- Wheyrigg Hall Hotel

PLEASE COME AND SUPPORT YOUR LOCAL SHOW

Latest Measles Update

Children and young people in Cumbria are again being encouraged to get protected against measles following a rise in cases in the region.

Despite high take-up rates of the vaccine in Cumbria, several thousand teenagers in Cumbria will be unprotected because they were not vaccinated. Measles is an infectious viral illness that is spread when infected people cough or sneeze. It can have serious

complications and in some cases prove fatal. The most common symptoms are fever, cough, sore eyes and a rash that develops three or four days after the onset of illness, starting with the face and head and spreading down the body.

Doses of the MMR vaccine are usually given at 13 months and between the ages of three and four. However children of any age, right up to young adults, should consider vaccination

if they missed out.

Dr Rebecca Wagstaff, Acting Director of Public Health for Cumbria County Council, said: "The worst affected areas of the country for measles this year are in the North East and North West. For children and young people living in Cumbria, It's not too late to get vaccinated."

Anyone who is concerned should speak to their GP, Health Visitor or Practice Nurse.



Solway Private Hire
advance booking essential
Airport Runs
Days or Nights Out
Car's to Minibuses Available
Tel: 016973 32310
www.solwayprivatehiresilloth.co.uk



Solway Shore Walks

There are still opportunities to join Ann Lingard's informal guided rambles on the Solway shore. Do come along, and find out about whelk eggs and worm-built reefs, underwater glues and mussel-power, sand dunes and sea-potatoes, submerged forests ... and much more. You can read more about the walks, and about people who work on the sea and live along the coast of the Firth, on Solway Shore Stories, www.solwayshorestories.co.uk.



Where, and what to wear?

Walks will either start from Mawbray Banks car-park (opposite the Bank Mill Nursery and Café at Beckfoot, where you can get a coffee or a meal), or from Allonby (for Dubmill Point), and will last 1½ to 2 hours (depending on the weather). Since each walk will be for a maximum of 10 people, please book beforehand by phoning 016973 21967 or email Ann on enquiries@annlingard.com. Children and dogs are most welcome as long as they are accompanied by a responsible adult!

The terrain on the lower shore is slightly rocky, often slippery and always wet (often to mid-calf level), so wellies are essential – bare feet or walking-boots won't do! Bring walking-poles if you feel happier using them, and warm and waterproof clothing (it can be windy and cool on the shore even if the sun is shining). The walks are free, but voluntary donations towards the guide's travel and publicity expenses would be gratefully received!

Meeting times for the remaining walks are: Friday 26th July at 9am. Meet at Mawbray Banks car park opposite Bank Mill Nursery. Wednesday 21st August at 6:30pm. Meet at Mawbray Banks carpark opposite Bank Mill Nursery. Saturday 24th August at 8:45am. Meet at Allonby, car park opposite Twentymans store (for Dubmill Point).

Bank Mill Craft Show

As part of our programme for fund raising for various charities, on 14th September we will again be staging our Annual Show.

This year's event is to help raise money for Anastasia's Fund.

Invitations are open to everyone no matter how far they wish to travel or send in their entries. Even if you are

not interested in Gardening there are other classes: for example Baking and Handicrafts, so here's hoping that you will join in and make the event a success.

Entries must be staged by 9:45am on Saturday 14th September, before our Judges take over.

Information about the show can be obtained

from our website at: bankmillnurseries.co.uk or by telephoning 01900 881340. Below is a list of this year's classes.

Other events in the near future are a repeat of last Autumn and this Spring's successful Craft Fair on Sundays 21st July, 25th August, and 22nd September.

HORTICULTURAL SHOW CLASSES - Saturday 14th September 2013 (See our Web Site: www.bankmillnurseries.co.uk)

CHILDREN'S SECTION

- (Entries are free in this section)
- 1 Pre School - Picture of a Bank Mill Bunny
 - 2 4 - 5 Years - Painting a stone
 - 3 Coloured Drawing of a Bug
 - 4 Junk Monster
 - 5 6 - 7 Years - Handwriting (See appendix) Gruffalo
 - 6 Painting a Plant Pot
 - 7 Paper Plate Animal Mask
 - 8 8 - 9 Years Handwriting (See appendix) Rocket Poem
 - 9 Spaceship from Junk
 - 10 Re-Cycled Jewellery
 - 11 10 - 11 Years Handwriting (See appendix) A Pencil Portrait
A Vegetable/ Fruit Character

BAKING SECTION

- 12 1 White Loaf
- 13 1 Apple Plate Cake
- 14 3 Gingerbread Squares
- 15 3 Scones Fruit
- 16 3 Shortbread Rounds
- 17 1 Victoria Sandwich (No icing sugar on top)
- 18 1 Decorated Chocolate Cake
- 19 Jar Chutney (Green Tomato)
- 20 Jar Blackcurrant Jam
- 21 Jar Strawberry Jam
- 22 Jar Lemon Curd
- 23 Jar Marmalade (Orange)
- 24 Dish Rum Butter

HANDICRAFT SECTION

- 24 Hand made Toy
- 25 Home made Greetings Card
- 26 Home made Cushion
- 27 Humorous Photograph with caption
- 28 A Hand Made Bag
- 29 An article of double knitting
- 30 A Hem of Beadwork
- 31 A painting of a local scene
- 32 New from Old

- 34 A Doll wearing a Hand Made Outfit eg knitted or sewn
- 35 A Handmade Box - Any Needlecraft
- 36 A Decorative Bottle Stopper
- 37 A Folklore Quote
- 38 A Friendship Bracelet
- 39 A Luxury Wrapped Gift

FLORAL SECTION

- Flowers & Plants
- 40 Flowering plant in a pot
 - 41 Foliage plant in a pot
 - 42 Four fresh herbs in a tumbler
 - 43 One bloom Rose
 - 44 7 Sweet Peas
 - 45 A Small bowl Nasturtiums
 - 46 3 Pansies
 - 47 3 Dahlias
 - 48 A vase of cut flowers
 - 49 An Arrangement of cut Flowers From the Garden (An exhibit of Foliage)

FRUIT and VEGETABLE SECTION

- 51 3 Cooking Apples
- 52 3 Desert Apples
- 53 3 Plums
- 54 A Saucer of Soft Fruit
- 55 1 Cucumber
- 56 4 Tomatoes
- 57 5 Cherry Tomatoes
- 58 3 Beetroot
- 59 3 Broad Beans
- 60 3 Runner Beans
- 61 3 Carrots
- 62 3 Courgettes
- 63 3 Trench Leeks
- 64 1 Marrow
- 65 4 Onions from Sets
- 66 4 Onions from Shallots
- 67 3 Coloured Potatoes
- 68 3 White Potatoes
- 69 5 Vegetables in a basket
- 70 An unusual shaped Vegetable or Fruit
- 71 An old piece of Gardening Equipment

Silloth Vintage Rally



Report by:
Eric Davenport, Chairman

On behalf of the committee I would like to thank all our sponsors and also the contributors to the programme.

Although the weather was mixed on the Saturday the Sunday was beautiful and this has been one of the best Vintage Rallies ever. We have had more entries than ever before and bigger crowds this year.

The entertainment has been excellent with Mike the Kiwi Sheepman, the Frumptarn Guggenband and our old friends the Lincoln Regulators Cowboy Show.

Thanks to all exhibitors, and of course the public who come to see and support the show.



Busee

by Ellie Henderson from Silloth Primary School

West Silloth Motors

Motor Vehicle & Body Repairs

MOT TESTING STATION
for Cars, Vans & Motorhomes

Breakdown & Recovery Service

Free Vehicle Collection & Delivery Service Open Monday to Saturday

Diagnostics

Tel: 016973 32833 ~ Fax: 016973 31478

Email: mark@WestSillothMotors.co.uk

Causewayhead Garage, Causewayhead, Silloth, CA7 4JG

We accept all major credit /debit cards

Community Barbecue

at
Holm Cultram
Abbey School
on

Friday 12th July
6pm to 8pm
lots of raffle prizes
games

BYOB
juice/tea/coffee
provided

Tickets £5 / £3
from school or pre-
school or Debbie
Steel 016973 61249

Pink Poodle



Grooming Salon

**Fully Qualified
Grooming Specialist**

Sunflower Cottage
Blitterlees, Silloth CA7 4JN

Tel: 07519 223364

marian.sheppard@btinternet.com

Children's Centre

Opening Hours:
Monday 9:30am to 12:30pm
fortnightly for the
Childminders group also
Monday 1pm to 3 pm term time
Tuesday 1pm to 3 pm term time
Wednesday 9:30am to 12:30
for Tots n Toddlers

Open at other times when the
rooms have been booked, if you
wish to use the Centre please
call to make arrangements. We
are more than happy to show
people around, chat on a one
to one basis or in small groups.

Contact Numbers:
Silloth CC - 016973 31230
Aspatria CC - 016973 22777
Wigton CC - 016973 49555

Arthritis Support

Wigton Area Arthritis Support
Group meet on
1st Friday each month at
Loveday House, South End,
Wigton @ 1:30pm, details from
Glady's 016973 43964

Silloth Tots/Toddlers

Silloth Tots & Toddlers meet in
the Children's Centre, Silloth
and is open to all children aged
from 0 to 4 accompanied by a
parent/carer.
Sessions are on:
Wednesdays:
10pm to 11:30am
term time only
Entry is £1 per family and this
includes refreshments
All Welcome
Call in for a friendly chat

Abbeystown Library

Abbeystown mobile library
will stop outside the
Wheatshaf Inn at 1pm for an
hour every Monday

Christ Church

For Christ Church baptisms and
other church related business
please contact:
Rev Bryan Rothwell
The Vicarage, Wigton Road
Tel: 016973 31413

Civic Amenity Sites

Operated by Cumbria County
Council. tel: 01228 606060
Maryport Tip, tel 01900 66922
open daily 8am to 6pm
Wigton Tip, tel 016973 45617
open Tuesday, Thursday,
Saturday & Sunday,
8am to 6pm

Production Team

Proprietor:
Peter McRobert
Barn Cottage
Skinburness, CA7 4RA
Tel: 016973 32180
Email:
office@solwaybuzz.co.uk

Editorial Content
This is down to you, we can
only publish items if you send
them to us.
When sending articles in,
please supply a contact name
and number in case something
requires clarification.
We will accept letters or
emails, but we do prefer emails
as we have to have your letters
typed out.
Published by:
Peter McRobert with the
support of the whole
community and an army of
volunteers.

Football Training

Silloth Football Club

Eden Street Playing Field
under 7 years
Wednesdays 4-5pm
under 11 years
Wednesdays 5-6pm
Men's Team
Tuesday 8:30pm to 9:30pm
Men's Team
Wednesday 7:30pm to 9pm
Open to boys and girls.
Membership forms available
from all coaches.
Secretary: Stephen Hart 32706

Karate Club

From Monday 9th January
Silloth Karate Club will be
moving to Solway Community
School Hall.
under 12's 6:30 to 7:30pm
12's and over 7:30 to 9pm
NEW MEMBERS WELCOME
For further details contact
Stephen on 07811 761033

Ballroom Dancing

In Mawbray Village Hall every
Wednesday from 7:30pm to
9:30pm for both beginners and
improvers, entry £2.
All welcome,
Telephone Gerry & Susan on
016973 32956

Kickboxing Club

The Kickboxing Club is held
in Christ Church Hall every
Thursday night from 6:30pm to
7:30pm. All welcome.
www.solwaykickboxing.
webeden.co.uk

Kettlebell Fitness

Kettlebell Total Body Blast is
at Silloth Sports Hall every
Wednesday night from
7pm to 8pm.
Rapid results, Unisex, Suitable
for all levels of Fitness.
To Book Call or Text Gayle on
07725 99 00 62

Wednesday Bunch

Silloth Evangelical Free Church,
Eden Street Wednesday Bunch.
at 5pm every Wednesday,
(except in school holidays)
Fun, bible stories, quizzes,
craft, games for 5-11s

Bridge Group

Meet on Wednesday evenings
from 7 till 9pm, at the Golf Club
to play Duplicate. Information
from mike.md@btinternet.com.

Breastfeeding Group

Mondays 10am to 11:30am
Wigton Bowling Club, West
Road, Wigton
Have a cup of tea and meet
other breast-feeding mums.
Support and advice is available
from trained Breast-feeding
Peer Supporters and from
Health Visitors or Midwives. For
more information call Wigton
Health Visitors: 016973 66608

Copy date for the
August issue is:
1st July 2013

If your organisation has an
event to promote or you
have something to say,
please note the next copy
date.

Dates for the Diary

June

20th Solway Plain Artists
Windows Displays
21st Solway Plain Artists
Windows Displays
21st Strawberry Cream
Tea at Silloth Nursing Home
from 2pm, admission £2
22nd Solway Plain Artists
Windows Displays
23rd Solway Plain Artists
Windows Displays
24th Solway Plain Artists
Windows Displays
25th Solway Plain Artists
Windows Displays
25th Criffel Tea Dance
in Solway Community School
from 1:45 to 3:45pm, Tel: Marie
Robinson 016973 31553
26th Solway Plain Artists
Windows Displays
26th Solway Shore Walk
meet at Allonby Car Park opp
Twentymans Store at 8:30am
Book on 016973 21967
27th Solway Plain Artists
Windows Displays
28th Solway Plain Artists
Windows Displays
29th Solway Plain Artists
Windows Displays
30th Solway Plain Artists
Windows Displays

July

1st Solway Plain Artists
Windows Displays
1st Silloth Town Council
meeting at 7pm in the
Community Hall, all welcome
2nd Solway Plain Artists
Windows Displays
3rd Parkinson's Group
Meeting in Wheyrigg Hotel at
12:30pm for lunch then talk by
Louise Miles "Calvert Trust". All
welcome. 016973 52527
3rd Solway Plain Artists
Windows Displays
4th Solway Plain Artists
Windows Displays

Ladies Fellowship

Silloth Evangelical Free
Church, Eden Street Ladies
Fellowship starts Thursday,
26th September at 1.45pm.
Thereafter alternate weeks.
Warm fellowship, refreshments,
and good speakers.
All welcome

Whist Group

Age no barrier. Anyone
interested please come along
on a Tuesday at 1.30pm until
3:30pm, entry is £2 - if you
require any more information
please ring Susan Kenny on
016973 32450.

RNLI Shop

SHOP OPENING HOURS
Saturday 11am - 4pm
Sunday 11am - 4pm
Monday 1pm - 4pm
Tuesday 1pm - 4pm
Wednesday 11am - 4pm
Thursday 1pm - 4pm
Friday 1pm - 4pm

Our shop is staffed entirely by
volunteers and occasionally
we may not be open at the
advertised time. We do
apologise for any inconvenience
that this may cause.

July cont'd

5th Solway Plain Artists
Windows Displays
6th Strawberry Tea in
St Andrews Church Hall with
Silloth & District Pensioners
8th Give Blood at
Greenhill Hotel, Wigton from
3pm to 7pm
9th Criffel Tea Dance
in Solway Community School
from 1:45 to 3:45pm, Tel: Marie
Robinson 016973 31553
10th Causewayhead WI
meeting in Trinity Methodist
Church Schoolroom at 7:15pm
for a visit to Lifeboat Station
and Picnic
12th Give Blood at the
Masonic Hall, Temple Terrace,
Aspatria from 3pm to 7pm
12th Community BBQ at
Holm Cultram Abbey School
from 6 to 8pm, tickets £5/£3
12th Summer Concert with
Christ Church & St Pauls Mens
Choir at 7pm in Christ Church
Hall
13th Crunch Service in
Skinburness Road Car Park
from 8am to 9:45am
14th Sea Sunday Service at
the Lifeboat Station @ 3pm
17th Wigton Medical
Practice closed for training
from 1pm
19th Silloth Kite Festival
20th Silloth Kite Festival
20th Christ Church Garden
Party at the Church at 1pm
21st Bank Mill Craft Show
21st Silloth Kite Festival
23rd Criffel Tea Dance in
Westnewton Village Hall from
1:45 to 3:45pm, Tel: Marie
Robinson 016973 31553
26th Solway Shore Walk
meet at Mawbray Banks opp
Bank Mill Nursery at 9am
Book on 016973 21967
27th Abbeystown Carnival

August

2nd Chichester Hall
Flowers & Frames Open Day,
Teas, Tombola & Raffle, Free
entry
3rd Chichester Hall
Flowers & Frames Open Day,
Teas, Tombola & Raffle, Free
entry
4th Chichester Hall
Flowers & Frames Open Day,
Teas, Tombola & Raffle, Free
entry
6th Criffel Tea Dance in
Westnewton Village Hall from
1:45 to 3:45pm, Tel: Marie
Robinson 016973 31553
7th Parkinson's Group
Meeting in Wheyrigg Hotel at
12:30pm for lunch then talk by
Rosalind Downing "St. Bega's
Way". All welcome. 016973
52527
8th St Pauls Coffee
Afternoon in Christ Church Hall
at 2pm
10th Crunch Service in
Skinburness Road Car Park
from 8am to 9:45am
10th Silloth Catholic
Church Coffee Morning from
10am to 12 noon

Errors do occur in Dates
for the Diary. Please check
before attending an event.

August

13th Holme Low Parish
Council meeting in the
Community Hall, Silloth
at 7:30pm
18th Annual Charity
Ploughing Match at Allonby
18th SOS Beach Half
Marathon starts at 1:30pm
20th Criffel Tea Dance in
Westnewton Village Hall from
1:45 to 3:45pm, Tel: Marie
Robinson 016973 31553
21st Solway Shore Walk
meet at Mawbray Banks opp
Bank Mill Nursery at 6:30pm
Book on 016973 21967
23rd Solfest
24th Solfest
24th Solway Shore Walk
meet at Allonby Car Park opp
Twentymans Store at 8:45am
Book on 016973 21967
25th Solfest
25th Bank Mill Craft Show
26th Silloth Carnival

September

1st Silloth Craft Show
2nd Silloth Town Council
meeting at 7pm in the
Community Hall, all welcome
3rd Criffel Tea Dance in
Westnewton Village Hall from
1:45 to 3:45pm, Tel: Marie
Robinson 016973 31553
4th Parkinson's Group
Meeting in Wheyrigg Hotel at
12:30pm for lunch then talk
by Dr John Morris, Consultant
Clinical Neuropsychologist. All
welcome. 016973 52527
5th Silloth Music & Beer
Festival on Silloth Green
6th Silloth Music & Beer
Festival on Silloth Green
7th Anniversary Coffee
Morning in the Recreation
Hall with Silloth & District
Pensioners
7th Blencogo Annual
Produce Show at 2pm

7th Silloth Music & Beer
Festival on Silloth Green
8th Silloth Music & Beer
Festival on Silloth Green
11th Causewayhead WI
meeting in Trinity Methodist
Church Schoolroom at 7:15pm
for Ian Potts describing Life as
a Professional Musician
14th Crunch Service in
Skinburness Road Car Park
from 8am to 9:45am
17th Criffel Tea Dance
in Solway Community School
from 1:45 to 3:45pm, Tel: Marie
Robinson 016973 31553
19th Wigton Medical
Practice closed for training
from 1pm
22nd Bank Mill Craft Show
28th The Gala Trio with
Friends in Christ Church @ 7pm

Please note that articles,
letters and virtually all
content of the Solway Buzz
are contributed by YOU,
the local community. The
Editor reserves the right to
control what is included,
however, no responsibility
whatsoever for the content
of the Solway Buzz can be
accepted by the Editor, or
the Publishers.

October

1st Criffel Tea Dance
in Solway Community School
from 1:45 to 3:45pm, Tel: Marie
Robinson 016973 31553
2nd Parkinson's Group
Meeting in Wheyrigg Hotel at
12:30pm for lunch then talk
by Brian Irving "Solway Coast
Area of Outstanding Natural
Beauty". All welcome. 016973
52527
5th Coffee Morning in the
Recreation Hall with Silloth &
District Pensioners
7th Silloth Town Council
meeting at 7pm in the
Community Hall, all welcome
9th Causewayhead WI
meeting in Trinity Methodist
Church Schoolroom at 7:15pm
for Gilly Fraser to talk about
the Clydesdale Horses Migration
from Skye
12th Crunch Service in
Skinburness Road Car Park
from 8am to 9:45am
15th Criffel Tea Dance
in Solway Community School
from 1:45 to 3:45pm, Tel: Marie
Robinson 016973 31553

16th Wigton Medical
Practice closed for training
from 1pm

19th RNLI Race Night in
Silloth Social Club at 7:30pm

25th Halloween Bonfire
& Fireworks Display on Silloth
Airfield

29th Criffel Tea Dance in
Westnewton Village Hall from
1:45 to 3:45pm, Tel: Marie
Robinson 016973 31553

November

2nd Pre-Christmas Tea in
St Andrews Church Hall with
Silloth & District Pensioners

4th Silloth Town Council
meeting at 7pm in the
Community Hall, all welcome

6th Parkinson's Group
Meeting in Wheyrigg Hotel at
12:30pm for lunch then talk
by Annette Gibbons "ready
Salted". All welcome. 016973
52527

9th Crunch Service in
Skinburness Road Car Park
from 8am to 9:45am

12th Criffel Tea Dance
in Solway Community School
from 1:45 to 3:45pm, Tel: Marie
Robinson 016973 31553

12th Holme Low Parish
Council meeting in the
Community Hall, Silloth
at 7:30pm

13th Causewayhead WI
meeting in Trinity Methodist
Church Schoolroom at 7:15pm
for a demo and talk on
Hatmaking by Sara Gadd

17th Christmas Craft Fayre
in Mawbray Village Hall from
10am to 4pm

26th Criffel Tea Dance
in Solway Community School
from 1:45 to 3:45pm, Tel: Marie
Robinson 016973 31553

29th Christmas Sale &
Coffee Afternoon at Silloth
Nursing Home from 2pm,
admission £1.50

30th Pre-Christmas
Afternoon Tea in Christ Church
at 2pm

Do you have an event
in the area bounded by
Abbeystown, Mawbray,
Silloth, Skinburness, if
so please let us know.

Copy
Date



Your Letters

Dear Buzz,
Solway Woodcarving Group would just like to say many thanks and congratulations to all that organised Silloth Green Day. It was a total success, especially going by the number of visitors. The weather was kind too. The Solway Woodcarving Group had a small display of carvings and a demonstration in the main marquee and we attracted plenty of attention, this was maybe the noise from mallets hitting gouges! Many of our members' work was on display at Wigton in the former Fearons shop window as part of 'Wigton Windows Week' who we are also thankful to. We totally

appreciate any invites to showcase our work. Our carvers enjoyed Green Day as we had plenty of interested observers with the usual comments of 'I could never do that'. I said that two years ago, I have even abolished my ten years of keeping foreign finches to have woodcarving take over! Our evening carving sessions have become so popular recently we have to apply a waiting list as we are full to capacity - all workstations are taken. Fortunately Clive has provided carving sessions available in the afternoons of Mondays and Wednesdays at 12:30pm. Please contact Clive for more details. Tel. 016973 31995 or email -

clivewoodcarver@aol.com.
Alison Robertshaw

Dear Buzz,
I would like to know if anyone has photograph of the wood building which stood near to Silloth Motor Company garage opposite Hylton Terrace and was used by the British Legion. Many events such as wedding dances, Police Ball, Farmers Ball and others were held after WWII and through the 60's. If anyone has a photograph and is willing to discuss it please contact Lawrence Marshall on 016973 31257.
Lawrence Marshall

Dear Buzz,
In the lead up to the recent County Council elections SPAND wrote to all 77 candidates standing for election in the Allerdale Divisions. We put a number of questions to them regarding their attitude to any future attempt to resurrect the idea of siting a nuclear dump in Cumbria. In all 21 candidates responded by email; the further away you got from Silloth the lower the level of interest. Unfortunately, due to a combination of clerical oversight on my part and my broadband being out of action for a week I omitted to arrange to have the response of Sam Griffin, Green Party Candidate for the Solway Coast Division, posted to the SPAND web-site. This would have given anyone accessing the web-site to view the responses the mistaken impression that Mr Griffin had not responded when indeed he had. I must, on behalf of both SPAND and myself, apologise unreservedly for any damage this may have caused to Mr Griffin's election campaign and his personal reputation. I would also thank him for the supportive nature of his response. His response is now visible on the SPAND web-site.
Don Graham (SPAND)

Dear Buzz,
We would like to say a very very big thank you to our son Eddie along with Lesley and our niece Jackie Carruthers for looking after both of us so well during our very very serious (not related) illnesses. Thanks also to our very good friends for their lovely flowers, cards and enquiries. A big thank you to the Good Companions for their lovely hot dinners delivered every day which Eddie ordered for us. Also to the Silloth First Responders and Silloth Doctors Surgery. Thank you all,
Margaret & Harold Studholme

Summer Sizzler

Why not curl up with a good book?

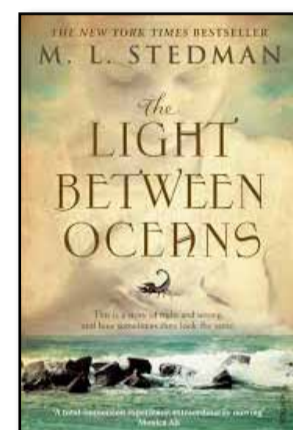
Supported by Anne Carruthers Cumbria Library Service

This is How It Ends by Kathleen MacMahon
Autumn, 2008. The coast of Dublin, Ireland. Bruno, an American, has come to Ireland to search for his roots. Addie, an out-of-work architect, is recovering from heartbreak while taking care of her infirm father. When their worlds collide, they experience a connection unlike any they've previously felt, but soon tragedy will test them - and their newfound love - in many ways they



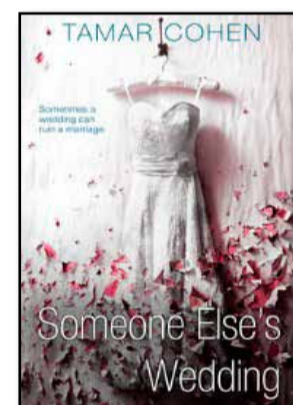
never imagined.

Light Between Oceans by M.L. Stedman
Tom Sherbourne, released from the horrors of the First World War, is now a lighthouse keeper, cocooned on a remote island off Western Australia with his young, bold and loving wife. Izzy is content in everything but her failure to have a child. Years later, after two miscarriages and a stillbirth, a boat washes ashore carrying a dead man - and a crying baby...now the path of the couple's lives hits an unthinkable crossroads. Safe from the real world,

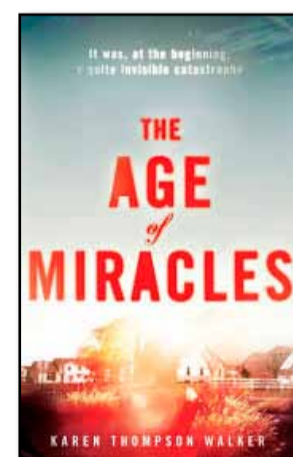


Tom and Izzy break the rules and follow their hearts. It is a decision with devastating consequences....

Someone Else's Wedding by Tamar Cohen
There's nothing like a wedding to stir up family conflicts, and this follows the Friedman family as their lives unravel hour by hour at the wedding of a family friend that no one will forget. Secrets are revealed and lives are turned upside down. It's a gripping tale from beginning to end.....



The Age of Miracles by Karen Thompson Walker
What if our twenty-four-hour day grew longer, first in minutes and then in hours, until day became night and night became day, what effect would this slowing have on our world? On the birds in the sky, the whales in the sea, the astronauts in space, and on a family and a young girl, who is already coping with the normal disasters of everyday life? Julia's account of how lives can be knocked unexpectedly out of kilter begins on one seemingly ordinary Saturday morning in a California suburb- when she and her parents wake to discover the rotation of the



earth has suddenly begun to slow. No one knows why, no one knows how to deal with it. The enormity of this change is almost beyond comprehension.

June is FREE talking book month. Why not check one out for yourself?

- Inferno - Dan Brown
- A Wanted Man - Lee Child
- Bring Up the Bodies - Hilary Mantel
- The Life - Martina Cole
- The Secret keeper - Kate Morton
- Tigers in Red Weather
- The Mystery of Mercy Close - Marian Keyes
- NYPD Red - Patterson and Karp
- I've Got your Number - Sophie Kinsella
- Sweet Tooth - Ian McEwan



Causewayhead WI Report

On May 7th, a group of Causewayhead WI Ladies (and a WI Husband) cleared litter from two parking areas near the harbour.

We collected eight black bags of litter, a fridge door and a large piece of metal. This was all left by the bin to be collected.

Since then on my daily dog walk, I have continued to pick up rubbish from this area, some of it within a few feet of the bin. It is mostly cans, bottles, plastic wrappers, chip papers and polystyrene food containers, also litter connected with fishing, ie Blood worm fish bait.

We do not understand the mentality of people who live in or visit this beautiful area and leave their litter within feet of a large litter bin.

Causewayhead WI Raffle:- Prize Winners Silloth Green Day 26th May 2013

No.	Prize	Name
1	Teddy Bear	Elland
2	Bottle Wine	M. Durham
3	Dolphins Ornament	J. Vorley
4	Cake	A Harrison
5	Picture	M Johnston
6	Beauty Box	Cora
7	Bottle Wine	43
8	Spa Box	Barbara Plattly.
9	Plant	Pat Bell
10	Cake	68
11	Toblerone	M Johnston
12	Bottle Wine	Orange ticket 23
13	Chocolates	D Shaw
14	Photograph Frame	Green ticket 45
15	Flower Arrangement	Carol

Prizes 12 and 14 have not been claimed at 1/6/13. Please contact Sue Kenny tel no. 32450 to claim.

WINTERS

POST OFFICE

Newspapers
Magazines
Sweets, Rock Novelties
Greetings Cards
Postcards
Gifts, Toys
Faxing & Photocopying

Eden Street,
Silloth-on-Solway
Shop: 016973 31323
PO: 016973 32957

Masthead Winner

Carlisle Embroidery are generously donating a Solway Buzz embroidered hoodie to the winner. This is in addition to the usual Winners Certificate and £5 Gift Voucher. So, come on kids, get drawing, the Buzz is always looking for more imaginative bees and yours might be the next winner. Send them in to the address on this page and a quality Solway Buzz embroidered hoodie from Carlisle Embroidery could be yours. You don't have to be at school here to send a bee to us. If you are here on holiday we would love to receive your bee drawing, just tell us your name, where you are from and where you are staying. You will find our address on page 10.

This month the winner is Nathaniel Mossop from Silloth Primary School with a bee called "Specky Sammy Bee". Well done!



The Station Tearoom

Where you can enjoy home made cakes, scones, soup, and cream teas with delicious freshly ground coffee.

Station Road, Silloth
Tel 016973-31845

Local Tradesmen and Services

Administration

The Bookkeeper
Bookkeeping, Payroll, VAT, Administration and Self Assessment Returns
Angela Ellwood MICB
Tel: 07919 121575
angela.ellwood@yahoo.co.uk

Building Services

SCAFFOLD HIRE

property maintenance & repairs

call John Morgan:
016973 31373
07746 496580
07753 859403

Free Estimates
Roofing, Guttering,
General Building Work

THE HANDYMAN

General Maintenance
Specialising in Exterior & Interior Repairs, Roofs and Gutters checked & cleaned, etc, etc

Call Tim for a free quote: 016973 61440 or 07980 369264

Caravan Repairs

J. SCOTT GAS SERVICES

Motor Caravan & Caravan Repairs

- Servicing
- Re-Sealing
- Gas Servicing
- Interior Repairs
- Chassis Repairs
- Damp Repairs
- Accident Repairs
- Van to Motorhome Conversions

Tel: 016973 49400
07823 440813

Carpet Fitter

David Blair
All work considered (inc caravans), Underlay & Fittings also supplied
Tel: 016973 32390
Mob: 07980 336638

Advertise in the Tradesmens Section

Car Valeting

Wash Your Wheels

Mobile Car Valeting

Mature, Experienced, Professional Service
Prices From £5

Paul & Debbie Howes
Tel: 016973 32696 or 07734 238617 or 07742 946820
We Come To You

Cleaning Services

OvenGem CarpetGem

Professional Oven & Carpet Cleaning

Fully trained & Insured

For a quote ring Ian on: 016973 43858
mobile: 07840 179725

www.ovengem.co.uk

Decorators

Peter Farnier

PAINTER & DECORATOR
Tel: 016973 33039
Mob: 07900 814484
Email: pelisethan@sky.com
RELIABLE SERVICE
Papering
Internal & External Decorating
Domestic & Commercial
Insurance Work
Free Estimates
Competitive Quotes



PETER WISE LIMITED

PAINTERS & DECORATORS

Painters & Decorators
Project Management
Property Maintenance
Commercial & Domestic

Tel: 01900 815883



Mob: 0773 269 0696
peterwiselimited.com

Unit 20a Solway Trading Estate, Maryport, CA15 8NF

email: info@peterwiselimited.com



Denture Repairs

Addison Orthodontics
Dental Repair Service
54 Esk Street
Silloth, t: 016973 32208

Driving Lessons

JAZZY'S School of Motoring

jazzyschoolofmotoring.co.uk
33 years in the Profession.
Trailer Lessons Available.
Full hour guaranteed.
Professional, Friendly service.
Training for all levels inc Refresher courses & Pass Plus.
Theory Test Pro
Pick-up points or from home
£20 per hour.
Discounts for block booking
£180 for 10 hours.
016973 32383
07764 405136

Firewood



APPLEYARD ECO LOGS & KINDLING

Dry Seasoned Hard & Soft Wood Firewood

Bagged Kindling
Free Local Delivery

Call Martyn on:
016973 61851
07919 582660

niky277@hotmail.co.uk

Seasoned Firewood Logs

DELIVERY AVAILABLE

Tel: Ashley Sharp
016973 31495
07762 772208

Whinclose Firewood

Delivery Available
Tel: Roy Ivinson
Tel: 016973 61273
Mob: 07949 358396

Gardening

Garden Services
Grass & Hedge Cutting
Pruning & Tree Surgery
General Maintenance
Tel Allen: 07768 496313

Joiners

DAVID READ

Carpentry & Joinery

Property Repairs & Maintenance

FREE ESTIMATES

No Job Too Big Or Too Small

City & Guilds Approved with 30 years Experience

016973 32245
07759 783823

OUTDOOR JOINERY

All outdoor joinery work

Maintenance & Repair work of all kinds

Laminate flooring fitted

Tel Norman on:
016973 61256 or 0785 754 7783

Stephen Fraser
Qualified Joiner
Joinery & Kitchen Fitting
Local & Reliable
No job too small
Tel: 07809 870604

Window Cleaners

Abbey Cleaning Services
Call Ryan on 016973 61162 or 07732 270844
your local reliable window cleaners



Advertise in the Tradesmens Section

only **£105** for ten issues or a 7cm box for only **£189.90** for ten issues

Paving Services

Harrison Landscaping

Hard Landscaping
Fencing, Turf Laying
Paving, Paths & Patios

Inc: Site Levelling, Drainage & Preparation

Free Estimates & Advice
Telephone Steven Harrison
016973 32401 ~ 07764 232073

LAKELAND PAVING

Driveway & Patio Specialist

- Driveways, Patios & Paths
- Garden Walls, Fencing & Turfing

Guaranteeing work to the highest standards

Free Estimates ~ Free Advice

For a professional and reliable service

please call:

01900 828164 or 07706 931505

Plumbers

07805 045052
016973 32263
Julie Ross
Plumbing & Heating

Installation, maintenance & repair of domestic plumbing and gas heating systems

Julie is a fully qualified & registered plumbing & heating specialist



www.julierossplumbing.com

Stuart James
Domestic Plumbing & Bathroom Installation, also Tiling
Reliable and Local
Tel: 07763 677752

M. TAYLOR

Over thirty years experience in the installation, maintenance and repair of domestic gas and heating systems, all aspects of domestic plumbing undertaken no job too small, local and reliable



Tel: 016973 32672
Mob: 07773 069856



Roofers

Allerdale & Eden ROOFING SERVICES

Flat Roofing Specialist
Slating or Tiling * Guttering * Fascias
All Types of Roof Repairs
Dry Verge * Lead Work * Pointing
Velux Window Installations
Free Estimates and Free Advice



01900 813517
07518 454396



On the Water Front

Report by: Captain Slog (Assisted by David at John Stronach Shipping Agency)

May 2013
2nd Ben Varrey with Wheat from Sharpness.
12th Zapadnyy with Molasses from Foynes.
17th Ben Varrey with Wheat from Liverpool.
17th Eems Stream with Fertilizer from Antwerp.
25th Filia Aria with Fertilizer from Ghent.
27th Fri Wave with Wheat from Oxelosund.
28th Scot Mariner with Woodpulp from Antwerp.
29th Ben Maye with Wheat from Liverpool.
30th Baltiyskiy 202 with Fertilizer from Klaipeda/Ayr.
31st Ben Varrey with Wheat from Sharpness.

It is probably not widely known, that Messrs Carr & Co, the owners of the then recently built flour mill at Silloth Docks, were themselves ship owners, during the latter part of the 1800's, through to about 1904. During that period they gained ownership of one small sailing ketch called "Swallow" and four small steam coasters, the "Swift", the "Surprise", the "Eden" and the "Nith".

Although the port of Silloth could and did handle quite large sailing vessels, (ships and barques), a lot of the grain imports into the UK from Australia and elsewhere arrived at the larger ports like Liverpool. It was then transhipped whenever possible directly into coastal vessels for distribution to smaller ports, or, more expensively, the grain was off-loaded to quay sheds for reloading to small ships when they arrived, thus involving double handling as well as storage costs.

The ships that were then owned by Messrs Carr & Co, undertook the task of bringing wheat and corn from Liverpool to the Solway ports of Maryport, Silloth, Annan and Dumfries, plus the occasional voyage to Belfast.

These vessels were reportedly 'happy ships' with their owners taking

an active interest in crew welfare, frequently visiting their vessels and becoming acquainted with the men on board.

Of these little ships, the "Swallow" was reportedly a fast and handy sailing vessel, manned by the Master, three men and a boy. She could carry about 100 tons of cargo. Sadly she was lost with all hands in bad weather after being dismasted in Morecambe Bay in December 1866, whilst on passage in ballast from Annan back to Liverpool. The "Swift" was a shallow drafted two masted steamer, built in 1882, capable of 9 knots and could carry around 210 tons of cargo. This vessel was also unfortunately lost in Morecambe Bay, (date unknown), following a collision with the steamer "Maggie Barr", resulting in the loss of both the mate and the engineer. The "Surprise" was another two masted steam coaster, similar in



Photo by: John Forrester

size to the "Swift" and built in 1882. She was then re-engined and fitted with new boilers at great expense to Messrs Carr & Co in 1900. Later sold to Scottish owners, this vessel was yet another to be lost at sea, the tragedy occurring in 1908, off the Scottish coast. (Seafaring was and still can be at times, a very risky business). The steamers "Eden" and "Nith" were sister-ships,

built respectively in 1896 and 1897. Both could carry about 300 tons of cargo and both were sold off in 1904, for about £4,000 each, thus ending Carr's venture into shipping ownership.

Much of Carr's coastal grain trade from Liverpool to the Solway then passed into the capable and reliable hands of Messrs John S. Monks Ltd, a successful Liverpool based coastal

shipping company, which transported the necessary commodities for Carr's Flour Mill at Silloth for another 25 years or so. Much of Carr's coastal grain trade from Liverpool to the Solway then passed into the capable and reliable hands of Messrs John S. Monks Ltd, a successful Liverpool based coastal shipping company, which transported the necessary commodities for Carr's Flour Mill at Silloth for another 25 years or so.

Busy Week at Silloth Docks

Report by: Stephen Wright

The port of Silloth had one of its busiest weeks recently, with six vessels calling within six days. It began on Monday 27th May when the 'Fri Wave' docked with wheat from Oxelosund in Sweden. Next day paper pulp from Antwerp in Belgium arrived on the 'Scot Mariner' and on the following day 'Ben Maye' brought wheat

from Liverpool and dutch vessel 'Filia Area' fertilizer from Ghent in Belgium. By Thursday evening the Russian ship 'Baltiskiy 202' had arrived with more fertilizer from Klaipeda in Lithuania and finally on Friday the 'Ben Varrey' came with wheat from Sharpness near Bristol.

In addition, the two-masted yacht 'Carole Kay' was in dock while her local crew prepared for a trip to the Isle of Man and the large

trawler 'Nordzee' was in dock for some maintenance work.

This very busy period coincided with the school holiday week, giving many visitors much additional entertainment while they stayed in Silloth. Not many resorts boast a working harbour like that at Silloth. At one point there were three ships in dock, between them, all six vessels brought approximately 10,000 tons of cargo. A truly exceptional week.

Tide Tables

JULY 2013		SILLOTH							
		DEPTH ON NEW DOCK GAUGE							
		High Water				Low Water			
Date		Morning		Afternoon		Morning		Afternoon	
	Time	m	Time	m	Time	m	Time	m	
1	M	05 39	6.1	18 17	5.5	00 00	-0.0	12 34	-0.1
2	TU	06 45	5.7	19 25	5.4	01 01	0.2	13 36	0.1
3	W	07 51	5.5	20 30	5.5	02 08	0.3	14 38	0.2
4	TH	08 54	5.6	21 26	5.7	03 14	0.2	15 39	0.1
5	F	09 47	5.9	22 12	6.1	04 14	0.1	16 30	-0.0
6	SA	10 32	6.1	22 51	6.4	05 04	-0.1	17 14	-0.1
7	SU	11 11	6.3	23 27	6.6	05 47	-0.3	17 53	-0.3
8	M	11 47	6.5			06 26	-0.4	18 29	-0.4
9	TU	00 00	6.7	12 20	6.6	07 02	-0.6	19 04	-0.5
10	W	00 32	6.9	12 54	6.6	07 37	-0.6	19 40	-0.6
11	TH	01 07	6.9	13 29	6.6	08 12	-0.6	20 16	-0.6
12	F	01 41	6.9	14 03	6.5	08 48	-0.6	20 54	-0.5
13	SA	02 16	6.7	14 40	6.4	09 23	-0.6	21 30	-0.4
14	SU	02 51	6.5	15 20	6.2	09 58	-0.4	22 08	-0.1
15	M	03 34	6.3	16 07	6.0	10 37	-0.2	22 51	-0.0
16	TU	04 24	6.1	17 03	5.7	11 24	-0.1	23 45	0.1
17	W	05 27	5.9	18 13	5.7			12 25	0.1
18	TH	06 44	5.7	19 28	5.9	00 53	0.2	13 41	0.1
19	F	08 00	6.0	20 38	6.2	02 12	0.1	14 58	-0.1
20	SA	09 10	6.3	21 39	6.7	03 30	-0.2	16 06	-0.4
21	SU	10 10	6.9	22 33	7.3	04 38	-0.6	17 09	-0.7
22	M	11 05	7.2	23 24	7.7	05 42	-1.0	18 07	-1.0
23	TU	11 54	7.5			06 39	-1.3	18 59	-1.2
24	W	00 12	8.0	12 41	7.6	07 31	-1.5	19 48	-1.3
25	TH	00 59	8.1	13 29	7.5	08 18	-1.6	20 33	-1.2
26	F	01 45	8.0	14 14	7.3	09 02	-1.4	21 15	-1.1
27	SA	02 30	7.6	14 57	7.0	09 41	-1.1	21 55	-0.7
28	SU	03 14	7.2	15 40	6.4	10 20	-0.7	22 35	-0.4
29	M	04 01	6.5	16 28	6.0	11 01	-0.3	23 20	-0.0
30	TU	04 53	6.0	17 25	5.4	11 46	0.1		
31	W	05 55	5.4	18 35	5.1	00 14	0.4	12 43	0.4

Tide Tables supplied by ABP Port of Silloth
Times shown in UTC. Add 1 hour for British Summer Time.

Phone Book

This section recognises those whose financial help keeps us going. If you wish to contribute in this way without taking an advert, please contact the Buzz, it costs only £45 a year.

- | | |
|--|---|
| Abbey Cleaning Services
07732 270844 | Stanwix Park
016973 32666 |
| Addison Orthodontics
016973 32208 | Station Tea Room
016973 31845 |
| Allerdale & Eden Roofing Serv'
01900 813517 | Stephen Fraser Joiner
07809 870604 |
| Appleyard Eco Logs
016973 32844 | Stuart James Plumber
07763 677752 |
| Beacon Veterinary Centre
016973 20242 | Tanglewood Caravan Park
016973 31253 |
| Bowen Therapy
016973 31632 | The Bookkeeper
07919 121575 |
| Cumbria Caravan Supplies
016973 42428 | The Charity Shop
016973 31696 |
| Carrs Coaches
016973 31276 | The Handyman
016973 61440 |
| Chiropractor
0845 643 9224 | Top 2 Toe Beauty Salon
016973 31591 |
| Community Bus
016973 31785 | Upholstery, Irene Armstrong
016973 31836 |
| D A Harrison
016973 42277 | Wallsend GH & Tea Room
016973 51055 |
| David Blair
07980 336638 | Wash Your Wheels
016973 32696 |
| David Read
07759 783823 | West Silloth Motors
016973 32833 |
| Fruit Link
07542 488750 | Wheyrigg Hall Hotel
016973 61242 |
| Garden Services
07768 496313 | Whinclose Firewood
016973 61273 |
| Golf Hotel
016973 31438 | Williamson Fencing
07711 144050 |
| Good Companions
016973 31553 | Winters Post Office
016973 31323 |
| Hair at Home
07754 523451 | |
| Harrison Landscaping
07764 232073 | |
| Harrisons Store Ltd
016973 61231 | |
| Hesketh Ecology
016973 31986 | |
| Hopes Estate Agents
016973 32018 | |
| Ice Cream Factory
016973 32395 | |
| J Scott Caravan Repairs
07823 440813 | |
| Jaybees
016973 31245 | |
| Jazzy's School of Motoring
07764 405136 | |
| Julie Ross Plumbing
07805 045052 | |
| Kirkup & Sons Butchers
016973 32000 | |
| KL Express
016973 33033 | |
| Lakeland Paving
01900 828164 | |
| Mark Hansford Computer Serv'
016973 32089 | |
| Markley IT Consultancy
016973 31276 | |
| Mike Taylor Plumbing
07773 069856 | |
| Outdoor Joinery
016973 61256 | |
| OvenGem + CarpetGem
016973 43858 | |
| Peter Farrier
016973 33039 | |
| Peter Wise
07732 690696 | |
| Photography by Peter
016973 32180 | |
| Pink Poodle
07519 223364 | |
| Queens B & B
016973 31373 | |
| Rainbow Flowers
016973 43434 | |
| Rookies
016973 49241 | |
| Sandra Hickebottom
016973 61440 | |
| Scaffold Hire
07746 496580 | |
| Seasoned Firewood Logs
07762 772208 | |
| Silloth Cafe
016973 31319 | |
| Silloth Rugby Club
016973 32299 | |
| S.O.S.C.S.
016973 32452 | |
| Solway Buzz
016973 32180 | |
| Solway Private Hire
016973 32310 | |
| Sonali
016973 32525 | |
| Spot On Entertainment
07736 774788 | |
| Stamper & Co
016973 33120 | |

Advertise
in the
Tradesmens
Section
only **£105**
for
ten issues

Useful Tel Numbers

- | |
|--|
| Age Concern Home Safety Scheme
01946 68986 |
| Chemist, Silloth: 016973 31394 |
| Community Bus Dave 016973 31785 |
| Com'ty Bus Lawrence 016973 31257 |
| Community Grants: 01900 325013 |
| Crime Stoppers: 0800 555 111 |
| Dental Emergency: 01228 603620 |
| Dentist, Buchanan: 016973 31270 |
| Dentist, Steel: 016973 32042 |
| Doctor: 016973 31309 |
| Doctor CHOC service 03000 247 247 |
| First Responders can only be called by the Ambulance service, call: 999 |
| Gas: 0800 111 999 |
| Highways Hot Line 0845 6096609 |
| Hospital: 01228 523444 |
| Holme St. Cuthbert School |
| Mawbray: 01900 881242 |
| Holm Cultram Abbey CofE School |
| Abbeystown: 016973 61261 |
| MP, Tony Cunningham: 01900 65815 |
| NAP 01900 702898 |
| Neighbourhood Forum: 01900 325013 |
| Police: 101 |
| Quakers, Wigton: 01228 523174 |
| Register Office, Wigton: 01228 221122 |
| Samaritans: 01228 544444 |
| Silloth Community School: 016973 31234 |
| Silloth Library 016973 31944 |
| Silloth Nursery & Junior School: 016973 31243 |
| Silloth Town Clerk: 016973 31128 |
| Allerdale B. Council 01900 702702 |
| Silloth Tourist Information Centre: 016973 31944 |
| Solway Buzz: 016973 32180 |
| Solway Private Hire: 016973 32310 |
| Vet: 016973 20242 |
| Waste Disposal Dept: 01900 702800 |
| Water LeakLine: 0800 33 00 33 |
| Please, let us know what you want included, also any changes to numbers. |

SILLOTH RUGBY CLUB

Available for Private Functions

- Birthday Parties •
- Engagements •
- Weddings • Christenings •
- Fund-raising Dances •

Comfortable, modern Lounge Bar
Suitable for small or large parties

Telephone Christine on:
016973 32299

For further details or to book

Tennis Festival



Report by: Rachel Fleming

Year 5 and 6 pupils from Holm Cultram Abbey Primary School enjoyed taking part in a Tennis Festival at Bitts Park in Carlisle on Friday 26th April.

The festival was organised and very successfully run by two young men, local to the area, David Pearson and Rob Jefferson, who are completing their final year of a sports degree at University of Cumbria. They provided coaching sessions to a number of schools taking part. The children loved learning tennis skills



and were thrilled on the day when they lifted the trophy after winning first place!

The children and staff at the school were very proud of their achievement.

Introduction to Astrology

Over the next twelve editions of The Buzz, we are going to explore the World of Astrology and all that it can offer. No - not the daily newspaper columns 'forecasting' how your day will unfold; these predictions are, at best, a simplified overview of general trends which may affect some people born under a particular 'sign'. Instead, I'm going to be highlighting all those personal traits and characteristics present when you were born, looking in more detail about what it means to be a 'Gemini', or a 'Cancerian' - lovable or not!

Before the first Sun Sign column appears in the next edition of the paper (and I shall be starting this series with 'Cancer, the Crab for those of you born between



June 21 and July 22!) no doubt it would be helpful to know and understand the definition of the most common astrological terms - otherwise, it may sound suspiciously like gobbledegook!

For instance, what do we mean when we talk about a Horoscope or Birth Chart? What is meant by The Zodiac and what does it consist of? What are 'Sun' signs, Moon signs and Ascendants?

Where do I fit in amongst all this?

Let's begin at the beginning.

(The) Zodiac may be translated from the Greek meaning 'Wheel of Life' or 'Path of the Animals' and if someone asks you: 'What's your sign?', then that person is really asking: 'Where was the sun positioned in the sky on the day you were born?' Astrology divides the sky into 'The Zodiac', or what looks like a wheel with 12 spokes, or a pie cut into 12 pieces! Each segment of the

(Chart) Wheel is referred to by its animal sign e.g. the 1st or Sun sign of the Zodiac is shown in the sign of 'Aries', and is symbolised by a Ram. The 2nd Sun sign is shown as Taurus, the Bull; the 3rd is the Sun sign of Gemini, the Twins, and so on until all 12 pieces, or Sun signs, are represented by animals. Furthermore, each part of the wheel covers a particular period in each month; therefore, Aries is the Sun sign for those people born between 21 March and 20 April; Taurus are born between 21 April and 21 May and so forth until the wheel, or circle, closes in the 12th Sun sign of Pisces.

We shall see the precise dates for each segment of the Zodiac as and when we look a little closer at each individual Sun sign but for now, this is your starting point!

If you want to find out more about astrology then contact Diane on 016973 32729 for further details, or email: reikidee@gmail.com.



Masterchef Bee by Katie staying at Midtown Farm Caravan Park

Cycle Solway for Eden Valley Hospice

As the cycling craze sweeps the nation a local hospice is encouraging cyclists to get into gear and sign up for Cycle the Solway.

On Sunday 29th September, just two weeks after Cumbria hosts the Tour of Britain, hundreds of cyclists will take to the picturesque country roads of North Cumbria and the Solway Coast in aid of Eden Valley Hospice.

Organisers of Cycle the Solway, Scott Self Storage, are aiming to build on the amazing success of the last year's event which attracted around 130 cyclists and raised over £12,600 for the local hospice.

Stephen Scott, Scott Self Storage Managing Director, said "We are really pleased to be organising this event for the Hospice, it is a great day

out for family cyclists as well as the more serious flyers. The scenery is fantastic and the routes are as flat as you will get in Cumbria."



With three routes, 100km, 50km and 25km, the third annual Cycle the Solway is the perfect event for cyclists of all abilities through the quiet country lanes around Carlisle, Kirkbride and the Solway Coast.

The family friendly 25km route is perfect for people of all ages looking for a leisurely ride set against a picturesque backdrop in aid of Eden Valley Hospice. Whilst the 100km route, which will pass through Allonby, Silloth and Kirkbride, will offer

fund-raisers the amazing opportunity to get into gear and challenge themselves this September.

Ian Dixon, Scott Self Storage added "We have deliberately tried to keep the routes as simple as possible, and on quiet, bike friendly roads. All the routes will be signposted, and there will be feed stations en route".

Registration for Cycle the Solway is £15 per adult, £5 per junior and £30 per family. To get back into your saddle and make a difference to your local hospice contact Eden Valley Hospice's Fundraising Team on 01228 817613, visit www.evospice.org.uk/cts or www.scottselfstorage.co.uk/cyclethesolway

Silloth on Solway Community Shop

- * Local people working for local causes *
- * All proceeds go back into the community *
- * **Please continue donating** *
- * Collection can be arranged *

S.O.S.C.S.

Open every day
10am to 3:30pm
Tel: 32452



S.O.S.C.S.
12 Criffel Street
Silloth

JayBee's

MILK 2 litre £1.20
6 Free Range Eggs £1
Bacon £1.19 a pack
1kg bag Oven Chips £1
Pizzas from £1

Toys • Off-Licence • Hardware • Gifts
Carpet Cleaner Hire • Key Cutting
Watch Batteries & Straps Fitted

open 7 days a week

6 Criffel Street, Silloth, Tel: 016973 31245



www.golfhotelsilloth.co.uk

- Breakfast
- Morning Coffee
- Lunches
- Traditional Sunday Carvery
- All Local Produce
- Afternoon Teas
- Evening Meals

Book Now



Silloth Tennis Club Open Championships



Over 100 players from as far and wide as London, Warrington, Scotland, Sunderland and York descended onto Silloth's picturesque promenade as the third Silloth Open proved to be another runaway success.

With events at under 8 through to adult singles and doubles the courtside Gazebo was constantly having to be restocked with cakes and sandwiches and the local ice cream shops and

vans were kept busy all week.

Reflecting on a fantastic week where over 200 matches were fiercely but fairly fought tournament organiser David Wise commented: "this was the third Silloth Open and by far the best. Even though we had a spell of rain the support of our committee and junior helpers really helped us through and the whole week went like a dream and the quality of play was really high."

The club would like to thank all sponsors and helpers and especially Silloth Primary and Solway Community Schools for the use of their facilities.

WINNERS:

- Under 8: Casey Pattinson (Workington), Lauren Bell (Carlisle)
- Under 9: Liam Short (Carlisle), Caitlin Almond (Maryport)
- Under 10: Louis Pickering (Workington), Terezia Holecova (Maryport)
- Under 12: Ali Hassan (Lazonby), Megan Almond (Maryport)
- Under 14: Joseph Wilkinson (Ulverston), Megan Almond (Maryport)
- Under 16: Boys No Event, Habiba Hassan (Lazonby)
- Under 18: Luke Kershaw (Aspatria), Emily Wise (Silloth)
- Men's Singles: Hugh Tyson (Windermere)
- Ladies Singles: Joanna Marshall (Cockermouth)
- Men's Doubles: Rob Ivinson & Richard Strong (Penrith)
- Ladies Doubles: Joanne Marshall & Elaine Clegg (Cockermouth)
- Mixed Doubles: Emily Wise & Robert Jefferson (Silloth)

Above: Jo Marshall, Luke Kershaw, Robert Jefferson & Emily Wise presented by Ella Thompson and Daisy

Below: Silloth Vet Tom Henderson played Spaniard David Escurreola



FINEST BANGLADESHI CUISINE
TAKEAWAY MENU



Sukur Ali
Spicing up the Solway

Welcome to Mr Sukur Ali's Sonali Bangladeshi Takeaway. Enjoy the spicy delights of traditional Asian cuisine brought from Sylhet to Silloth specially created for your enjoyment by a team of award-winning chefs. Mr Ali is famous for bringing curry to Cumbria and is confident that his delicious new dishes will not disappoint. So indulge yourself from this mouth-watering menu and savour the delights of Asia here on the Solway.

PHONE:
016973 32525/9

**31 WAMPOOL STREET
SILLOTH ON SOLWAY**
Open 5pm-11pm

HOPES Estate Agents
SILLOTH AND SOLWAY COAST

For advice regarding the **sale, letting** or **valuation** of property contact your local estate agent Richard Johnston on 016973 32018

8 Station Road ❖ Silloth ❖ CA7 4AE
www.hopesofwigton.co.uk

SILLOTH CAFE
Traditional Fish & Chips

Sit-In or Take-Away
Special Wheat Intolerance Gluten Free Option
Pensioners Meal Deal: Monday – Friday
Closed Wednesdays
Station Road, Silloth, Tel: **016973 31319**

Tanglewood Caravan Park
Silloth-on-Solway
016973 31253

Bar on site
Tourers Welcome
Hire Vans & Seasonal Pitches

Tanglewood is a pet friendly family run park ideal for relaxing laid back holidays
www.tanglewoodcaravanpark.co.uk

Rookies open 7 days from 10am-6pm for 0-12 years

New Adventure Soft Play Area

Rockclimbing Walls ~ 3 Lane Astra Slide
Ball Cannons ~ Giant Ball Arena
Toddler Car Track ~ Aerial Runways
Parties Available • Hot & Cold Food • Toddler Morning

Rookies, Miller Park, Wigton, CA7 9BA
Tel: **016973 49241**

Stamper & Co
Accountants & Financial Consultants
*Friendly * Professional * Efficient*

Book Keeping	Business Plans
Tax Advice	Secretarial Services
P.A.Y.E.	Self Assessment
VAT	Business Set Up
Accounts-Preparation	Capital Raising
	Motivation Training

Free Initial Consultation tel: 016973 33120
6 Eden Street, Silloth, CA7 4AD

Hannah Smith is Ladies County Champion

Silloth on Solway Golf Club has a new Ladies County Champion, Hannah Smith won her first County Matchplay Championship in a thrilling final at Carlisle Golf Club and became one of the youngest ever winners at the age of 16.



Hannah had an uneventful 36 hole qualifying but came through to make the last 16 where she faced former champion Alyson Wood, a tight battle saw Hannah close out the match with a one hole victory on the last. Another tough match followed in the quarter final where she faced current County Junior Champion Natasha Slater, again Hannah played some solid stuff to close out the match 2 and 1.

A semi final against County team mate Rosie Waller saw the match swing both ways but with nothing to separate them after 18 holes Hannah finally closed out the match with a solid par on the 19th.

The final saw Hannah paired up against home favourite Nikki Tebbut, with



Emily Smith and Hannah Smith with their County Championship Trophy's

nothing to chose between the players it was difficult to see who was going to come out on top. Hannah finally got her nose in front with par on 15 but had to hole a 25ft birdie putt on 16 to keep her 1 up advantage. With the tension building another

solid par at 17 saw the match come down to the final hole. After two great shots into 18 Hannah calmly rolled her birdie putt to the edge of the hole to claim her first title.

Emily Smith made it a double by winning the best nett prize in the Junior Championship, Emily received the Jean Stafford Trophy for her efforts and is now hoping to reduce her handicap so she can play in next years Ladies Championship.

D.A. Harrison
HAULAGE & QUARRY OWNERS



Haulage & Storage
Sand, Gravel & Aggregates
Readymixed Concrete
Demolition & Site Clearance
Licensed Waste Disposal Site & Skip Service
Stevedores at Silloth Docks

Admin: 016973 42277 Transport: 016973 44000
Skip Hire: 016973 31000 RMC: 016973 61777
Fax: 016973 42210
Waverton, Wigton, CA7 0AE

ATLAS
CONCRETE LIMITED

Tel: 016973 32585 or 016973 42277
After Hours: 016973 61753
Waverton, Wigton, CA7 0AE

MANUFACTURERS OF ALL TYPES OF PRESTRESSED CONCRETE PANELS AND GENERAL PURPOSE INSTANT WALLING

SILAGE FARM AND INDUSTRIAL USE, HOLLOWCORE FLOOR UNITS AND 'T' BEAMS MADE TO MEASURE

CONCRETE POSTS & PANELS FOR INSTANT SECURITY WALLING

DA Harrison & Company

Petrol ~ Diesel ~ Land Drainage Pipe
Water Pipe & Fittings

Coppins Garage, Waverton, Wigton
Tel: 016973 42277

KL EXPRESS
Chinese Takeaway

Open at 5pm
Every Day

A Wide Variety of Dishes for Every Taste

Telephone Orders
016973 33033
43 Eden St, Silloth



- Ecological Consultancy
- Wildlife Surveys; bats, newts, birds, etc. to support planning applications
- Wildlife Conservation work

www.heskethecology.co.uk
info@heskethecology.co.uk

Tel: 016973 31986
Mob: 07786 318302



www.sillothonsolway.com



SILLOTH-ON-SOLWAY
BEACH HALF MARATHON
AUGUST 18TH 2013

Event Starts
1:30pm



WINNING TIME
EVENT TIMING



ONLINE ENTRY
www.q-buster.co.uk



Official Charity
of the 1st Silloth on Solway
Beach Half Marathon





We believe that the Silloth on Solway Beach Half Marathon has the potential to be a major event on the running calendar... Think how good it will be to say

I DID THAT!

For fun, For a personal best or to make a difference. Why not have a go? There is only ever one first time!

ENTER ONLINE

www.q-buster.co.uk

£18 Individual
£39 Team Entry
subject to online booking fee