



Solway Buzz

Friendly Bee
by Jessica from Holme St Cuthbert School

www.solwaybuzz.co.uk

January 2016

local news - for you - by you - about you - free to you - local news

FREE PAPER

Issue 141

Page 2
What is it?



Page 3
The switch-on celebrations



Page 5
A jolly good lunch for all



Page 7
The incredible shrinking man



Pages 8 & 9
A great prizegiving Judith



Page 15
Well done George & Tomas



Page 16
A new golfer in town



Page 16
Alan is just Champion



Festive Greetings to all our readers

2016 Events

29th May
Silloth Green Day

11th + 12th June
Silloth Vintage Rally

30th July
Abbeytown Carnival

26th to 28th August
Solfest

29th August
Silloth Carnival

8th to 11th Sept
Music & Beer Festival

Silloth Lights Switch-On Was a Success and Cosy in the Cafe



Bee Eye View of the Bee Garden



Many thanks to James Smith for supplying this image of the Bee Garden, just to remind us of summer. You can see more of his photographs at: www.jamessmithphotography.com

Causewayhead WI

Report by: Pat Froggatt

The first of the winter meetings of Causewayhead WI took place on Thursday afternoon the 12th November at 2pm. These monthly meetings will be held in the afternoon until March.

The President, Margaret Durham was unable to attend due to recent surgery - get well soon Margaret. Pat Bell, Treasurer took the meeting as the evenings entertainment was being provide by Vice President, Mona Kent.

Obviously Mona needed no introduction and she proceeded to give us a demonstration on the making of Christmas decorations. She explained how she began this craft and also the techniques used. She began by showing us how to make a bauble and went through the process stage

by stage so that it was easy for us to follow. She also had a number of other shapes which could be made by this method; ie Easter Eggs.

The next demonstration was on how to make Christmas trees again using various fabrics - most of which are leftover scraps of material. The whole process when explained properly looked quite simple but needed plenty of practice. The whole evening was very inspirational. A vote of thanks was given by Shirley Sharp.

General Business followed after the break.

Competition:
Christmas Decoration 1st Ann Harrison, 2nd Pat Froggatt
Flower 1st Carol Knowles, 2nd Frances Jackson
Raffle 1st Marjorie Dockeray, 2nd Ann Harrison, 3rd Val Lodge

Knoxwood Christmas Fayre

Report by: Jennifer Bailey

Knoxwood Wildlife Rescue charity shop on Station Street in Silloth held their Christmas Fayre over the weekend of the 14th/15th November.

The weather outside was frightful, but inside was quite delightful, to almost quote the song. Slowly but surely, the good folk of Silloth and further afield, braved the wind, rain and cold to come and support the work which the charity carries out with all creatures that are brought into their care.

Isabel, Kate, Margaret, Bev, Jen and Jean all made sure that the weekend went smoothly with some lovely items to sell at unbelievably reasonable prices and with



a massive Tombola of 300 prizes and every bottle top (instead of tickets) winning a prize, Enda was kept well and truly on her toes.

The weekend proved to be a great success and the money raised will be of great help in caring for the

creatures at the rescue centre through the cold months to come, so a big thank you to everyone who came along to support the Knoxwood charity, your help is very much appreciated.

Buzz Needs Your Help!



A volunteers is needed to deliver your community paper to 26 houses in Grune Point Close.

We look forward to hearing from anyone who can help. Contact Peter or Kath on 016973 32180.



Amliya X
by Lucy Furness from Silloth Primary School

SILLOTH CAFE

Traditional Fish & Chips

Sit-In or Take-Away
Special Wheat Intolerance Gluten Free Option
Pensioners Meal Deal: Monday – Friday
Closed Wednesdays
Station Road, Silloth, Tel: **016973 31319**

top2toe BEAUTY SALON

Dermologica Facials & Products
Waxing & Tinting
Full Body Massage
Manicures, Pedicures & Shellac
Individual & Strip Lashes
Electrolysis, Collagen Bed, Sunbeds, Spray Tans
and many more (Gift Vouchers Available)
8A Eden Street, Silloth Tel: 016973 31591

THE CHARITY SHOP

(Good Causes, Silloth) Eden Valley Hospice
1 Queen's Court Marie Curie Cancer Care
Criffel Street North Lakeland Hospice at Home
Silloth Macmillan Cancer Support
Tel: 016973 31696
Contact: Denise Poland on 07736 386093
Closed Mondays Please help us to help them

The Lowther

Village Pub and Dining

Quality, home cooked food using the freshest local ingredients served
Wednesday to Saturday 6-9pm, and Sundays 12-8pm
Bar open seven nights a week with choice of 3 real ales, log fire, Monday night quiz and occasional live music
Bookings now being taken for Christmas and New Year

The Lowther, Mawbray, Maryport, CA15 6QT
Tel: 01900 881750 www.mawbraypub.co.uk

Slimming WORLD

because you're amazing
Meet at
Silloth Rugby Club
every Saturday
morning at 9am
or at 11am
or at
Silloth Primary School
at 7pm
Contact:
Denise Broughton on
07799 708465

Top Secret Roadshow

Mobile Disco for Any Occasion
Weddings, Family Celebrations, Christenings to Funeral Wakes, Fundraising Events, also Carnivals & Village Halls
Contact: Eric Stanwix
ericstanwixjr1@btinternet.com
Home Tel: 016973 32141
M: 07736 774 788

D.A. Harrison

HAULAGE & QUARRY OWNERS



Haulage & Storage
Sand, Gravel & Aggregates
Readymixed Concrete
Demolition & Site Clearance
Licenced Waste Disposal Site & Skip Service
Stevedores at Silloth Docks

Admin: 016973 42277 Transport: 016973 44000
Skip Hire: 016973 31000 RMC: 016973 61777
Fax: 016973 42210
Waverton, Wigton, CA7 0AE

ATLAS

CONCRETE LIMITED

Tel: 016973 32585 or 016973 42277
After Hours: 016973 61753
Waverton, Wigton, CA7 0AE

MANUFACTURERS OF ALL TYPES OF PRESTRESSED CONCRETE PANELS AND GENERAL PURPOSE INSTANT WALLING
SILAGE FARM AND INDUSTRIAL USE, HOLLOWCORE FLOOR UNITS AND 'T' BEAMS MADE TO MEASURE
CONCRETE POSTS & PANELS FOR INSTANT SECURITY WALLING

DA Harrison & Company

Petrol ~ Diesel ~ Land Drainage Pipe
Water Pipe & Fittings

Coppins Garage, Waverton, Wigton
Tel: 016973 42277

Christmas Lights Switch-On Evening Celebrations



Report by: Jennifer Bailey

The scene was set at The Silloth Cafe, also known as the Corner Chippy to those aficionados who frequent this noble establishment on a regular basis! The large dining room was cleared except for a few tables ready for any lost souls in need of sustenance, wandering in from the squally showers pounding the streets outside, in the form of the most delicious fish and chips and much, much more.

There were elf hats, costumes, Christmas jumpers galore being worn by the staff - Alison Henderson, Alison Fearon, Hannah Fearon, Michelle Fearon, Amanda Fearon, Debbie Fearon and Corah Scott - who all worked hard throughout the evening both in the dining room and keeping the customers happy in front of house.

There was the ringing of a hand bell (reminiscent of school yard days) and eventually the big man in the red suit arrived (Peter Richardson? or maybe..... just Santa) and began to receive the littlies as they lined up to tell him of their hopes and dreams for the BIG DAY, their faces alight with excitement as they anticipated the forthcoming treasures, the magic never

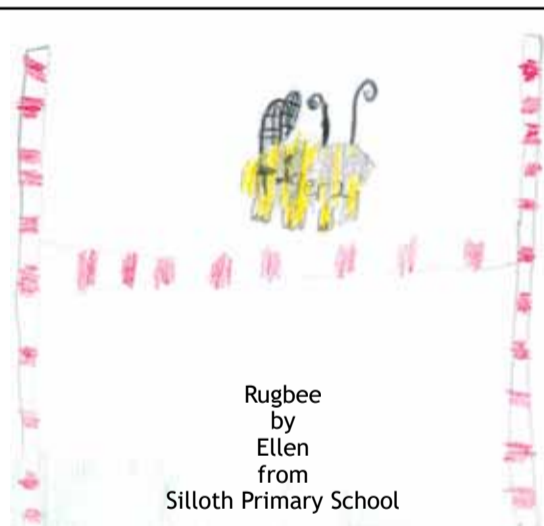
diminishes for the younger ones does it?

There was a sale table containing delicious, mouthwatering cakes, mince pies and chocolatey temptations from "Sarah's Kitchen" and also one resplendent with knitted woolly things for everyone including dollies, knitted by Mrs. Caroline Harrison, both tables ably attended by Jodie and Liam Keaveney and a table with raffle prizes, which was to be called at the end of the evening. Music supplied by the disco brought the room to life with all the favourite Christmas tunes.

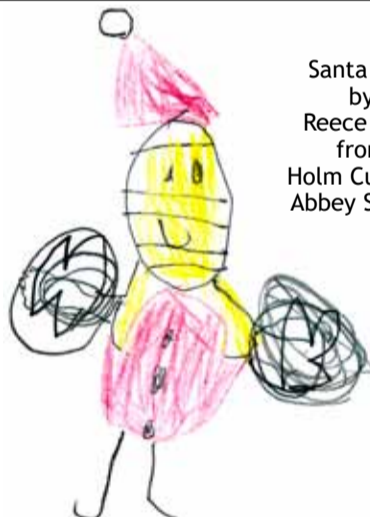
Tickets for the Christmas raffle were selling like hot cakes with prizes ranging from a large hamper of

goodies to chocolate bars, biscuits and pet food donated by many people. Children played and ran about, excited by the festive atmosphere of Christmas.

The Jellytots Nursery group arrived to sing nursery rhymes and Christmas songs, finishing with "We wish you a Merry Christmas." Then the Christmas Lights were switched on outside and the darkness became filled with coloured lights above the streets and the illuminated tableau of reindeer and sleigh, Christmas Tree and Merry Christmas sign, lovely. A big thank you must go to all those selfless folk who put in so much work to bring the festive spirit to our town each year.



Rugbee by Ellen from Silloth Primary School



Santa Bee by Reece Carr from Holm Cultram Abbey School

John & Sarah Wedding Beez by Emily Graham from Silloth Primary School



SeavorChartered
Accountancy, Tax & Business Advisers

Qualified Small Business Accountants who don't charge the earth.

FREE initial meeting

Over 20 years experience helping individuals & businesses achieve their financial goals.

Tel: 01228 904 904
www.seavorchartered.co.uk

Sandra Hickebottom
MCFHP DipFHT MAFHP

Foot Health Professional

Flexible Home Visits

All Foot Problems Treated

Corns, Callous, Ingrown Toenail, Verrucae, Diabetic Foot, Nail Cutting

Fully Qualified and Registered For 19 Years

Mob 07951 312513

The Good Companions Residential Care Home

Long & Short Term Stays in Single En-Suite Rooms

Meals on Wheels service available locally

www.gchc.co.uk

Criffel Street ~ Silloth ~ tel: 016973 31553

SOLWAY RED SQUIRREL GROUP

working to promote the preservation of our native red squirrel population

You can help by reporting all sightings of red or grey squirrels to

01228 711520

marion.grave@hotmail.co.uk

Thank you



Solway Private Hire

advance booking essential

Airport Runs

Wedding Cars

Days or Nights Out

Car's to Minibuses Available

Tel: 016973 32310

www.solwayprivatehiresilloth.co.uk



What-No Dog Poo Fairy!

Silloth-on-Solway Town Council appeal to dog owners to be responsible and to pick up after their pets. Dog fouling is a real issue on the football and rugby pitches at the Eden Street sports ground, on the Green, in the Crofts and other areas around the town.

The main reason for dog fouling laws is because dog faeces is unhygienic and a health hazard. Dog fouling is unsightly, unpleasant and can lead to toxocaraiasis in humans.

Toxocaraiasis causes serious illness and even blindness. It is caused by a parasite known as Toxocara Canis (also known as Roundworm). These parasites live in dogs' digestive systems. Eggs are released in the faeces of infected animals and contaminated soil. If someone ingests infected material, the eggs may hatch into larvae and can lead to toxocaraiasis.

Toxocaraiasis usually affects children aged between one and four years but cases of toxocaraiasis have been reported in people of all ages. Young children are most at risk because they are more likely to put things into their mouths and less likely to wash their hands properly.

Symptoms of toxocaraiasis can include seizures,



breathing difficulties, a very red and painful eye, and clouded vision, usually only in one eye. Left untreated, toxocaraiasis can cause permanent loss of vision in the affected eye.

The disease can be controlled if dog faeces are disposed of immediately in a responsible manner. Once you've picked up after your dog either take the poo bag home to dispose of or dispose of it in a nearby bin. Dog waste can be disposed of in any litter bin. Please don't hang the bags on the nearest branch or throw it in the sea or on the beach.

The majority of dog owners are responsible people, who pick up after their dog and dispose of the

poo bags properly but the irresponsible ones need to think about the consequences of not clearing up after their pet. Never mind the potential health risks - getting it on to your shoes or clothes is no laughing matter.

Free poo bags are available at the Tourist Information Centre, for the safe removal and disposal of dog's faeces.

We want the public to work with us to tackle the problem, keep our streets clean and take a pride in our town.

To report dog fouling please call 01900 702702 or report it online at: <https://secure1.allerdale.gov.uk/forms/dog-fouling-report>.

Children's Craft Making Sessions During 2016

St Andrews Church will be holding craft classes for children aged from four to ten. These will be held on the dates below, and will be from 2pm to 5pm. Parents can stay with the children if they wish.

The children will be making items suitable for Mothers Day, Fathers Day, St George Day, Easter and Christmas.

There will be a small charge to cover materials for the items made by the children, also a drink and biscuits for them. Prior to the sessions there will be posters advertising them and stating the price and where tickets can be obtained.

They will be held on:
Saturday 5th March
Saturday 26th March
Saturday 23rd April
Saturday 18th June
Saturday 3rd December
Saturday 10th December

These dates are also in the dates for the Diary section in the Solway Buzz on page 10.

SOSCS Donations

Business in the SOSCS shop has been good over the summer months therefore making it possible for us to donate to the following good causes in Silloth.

Silloth Lifeboat	£500
Silloth Festivals	£500
Silloth First Responders	£500
Silloth & District Pensioners	£500
Silloth Football Club	£500
Silloth Luncheon Club	£300
A total of	£2,800

These donations are only possible due to the generosity of you the people of Silloth who not only donate your unwanted goods to the shop but also make purchases. Thank you all for helping us to help others. Keep those unwanted items coming.

Bazaar Raises £350

St Andrews church held their annual Christmas Bazaar on Saturday 14th and 21st November. Santa was in his grotto and the children enjoyed meeting him and having a present.

Thanks to all those who came and supported the event, we managed to raise over £350.

Santa Bee
by
Millie Harrison
from
Holm Cultram Abbey
School



SPAR  **Solway Street, Silloth**

BIG BRAND SALE

Better than Half Price



Half Price



WAS £2.69 NOW £1.00

WAS £2.69 NOW £1.34

Better than Half Price



WAS £2.45 NOW £1.00

50% EXTRA FREE



£3



£2.50



Shredded Wheat 16's; Yorkshire Tea 120 for the price of 80 Pack; Volvic Mineral Water 6 x 500ml; Luxe Toilet Tissue 16 Rolls; Twix / Mars / Snickers 7 Pack - 9 Pack; Plenty the Original One 6 Rolls. All offers subject to availability from 4th to 20th January 2016. E & O. E.

OPENING HOURS

Mon to Sat 7:30am - 10pm
Sunday 8:30am - 8pm

FOR EASIER SHOPPING WE ACCEPT ALL MAJOR CREDIT CARDS



FREE to use Cash Machine 

RNLI Quiz at Mrs Wilson's Again

Once again the Silloth Fundraising Branch of the RNLI is holding a Quiz Night it is on Friday 29th January 2016 starting at 7.30. We return to Mrs Wilson's Criffel Street Silloth after a successful event last year.

Teams of up to 4 at £5 per person to include a light supper. Numbers are limited so to avoid disappointment please pre book at £2 per head at Mrs Wilson's the telephone number 016973 31155. Everyone is welcome.

Expensive Bees!



We do always ask that when you send your bees to the Buzz, you don't fold the picture, this means that most come in A4 envelopes, thanks for that.

However, not everyone realises that a normal first or second class stamp is insufficient for A4 envelopes, they require what the Post Office calls a 'large stamp'. These cost 74p second class and 95p first class.

When a second class stamped envelope arrives with insufficient postage, it costs the Solway Buzz £1.50 to receive that envelope and its valuable Buzz Bee!

We do want you to keep sending the Bees, just please make sure the envelope has a proper 'large stamp', thanks.

Even cheaper, drop them into your school or the Library at the Discovery Centre in Silloth.



Relaxing Bee
by Byron Wilson from Silloth Primary School

Join the Big Switch

People across Cumbria are being encouraged to join the new Big Allerdale Switch - an established initiative which has collectively saved residents more than £33,500 on their annual gas and electricity bills this year.

Allerdale Borough Council ran the second 'Big Allerdale Switch' last December and householders who signed up are now seeing average savings of £262 on their utility bills. Due to the continued success of the scheme, the Council is choosing to run it for a third year.

The Big Allerdale Switch is a 'collective switching' scheme where people group together to purchase their gas and electricity and save money. The initiative is being run by Allerdale Borough Council but anyone in the country can apply to the scheme, not just those living in the borough.

It is completely free to join, really simple to do, and residents can change their mind at any time in the process.

Allerdale Borough Council is running the switching initiative as part of the Big Community Switch, a scheme involving a number of local authorities throughout Britain. The Big Community Switch is operated by i-Choosr, an independent company with experience in collective switching schemes. It works by setting up a reverse auction and inviting energy suppliers to offer their cheapest dual fuel and electricity only deals.

Councillor Carni McCarron Holmes, Allerdale Borough Council's Executive Member for Housing, said: "This is the third year that the Council has run the scheme and year on year people have been able to make considerable savings on their current energy deal. It costs nothing at all to register your interest to switch and you could end up saving hundreds of pounds in the long run. It's really simple - the more people who sign up, the more the potential savings may be."

Luncheon Club Xmas Party



Report by:
Lawrence Marshall

Silloth Luncheon Club held their annual Christmas party at Wheyrigg Hall Hotel on Monday 7th December.

They were joined by some of the ladies who serve the meals throughout the

year at the Community Hall. Thanks must go to the Community Hall committee for the use of their facilities throughout the year. They also thank the Solway Community Technology College who provide the varied menu throughout the year. During

the school holidays the Good Companions Home accommodate our members and enable them to have their weekly meal.

We enjoyed an excellent hot meal at Wheyrigg Hall. A very pleasant afternoon was enjoyed by all eighteen of us.

Take Care with Doorstep Traders



Recent flooding has caused devastation to many homes in the Cumbria area.

Trading Standards warns that unscrupulous doorstep traders may use this as an opportunity to rip-off householders. You may be eager to rectify storm damage but take care,

be sensible, use people you know, obtain several quotes, and don't let unknown traders persuade you into having works done at your home. If in doubt, tell the caller to leave and do not let someone into your home who you do not know.

Remember, genuine traders will not try to pressurise you.

Be in control. Talk to family and friends to gain reassurance. Look out for

neighbours and friends, especially those who are vulnerable and elderly to help safeguard your community.

Call Citizens Advice Consumer Service on 03454 040506 for advice or to report a suspicious trader, or call 101 to report an incident to the police.

To report a distraction burglar or rogue trader who has taken your money and is still in the area - call 999.

West Silloth Motors

Motor Vehicle Body Repairs
Diagnostics, Servicing & Recovery

Causewayhead, Silloth, CA7 4JG

Tel: **016973 32833**

Free Vehicle Collection & Delivery Service



Employee Night

Come along on 12 January or 16 March 2016

We are providing independent advice so you know what recent workplace pension changes and auto enrolment mean to you.

For more information or to book your place:
e: vicky.johnston@david-allen.co.uk
t: 01228 711888

David Allen
Employer Services

HAIR SHE GOES
mobile hairdressing
straight to your door:
cutting
colouring
perming
hair ups for special occasions!



TEL: 07857989358

BEACON VETERINARY CENTRE

Open Surgeries

Silloth Open 12am-3pm
Consults 1:30pm-2:30pm
Wednesday 6pm-7pm

Aspatia consults
6pm-7pm

Appointments at other times by arrangement
016973 20242

KL EXPRESS Chinese Takeaway

Open at 5pm
Every Day

A Wide Variety of Dishes for Every Taste

Telephone Orders
016973 33033
43 Eden St, Silloth

Cushions & Covers,



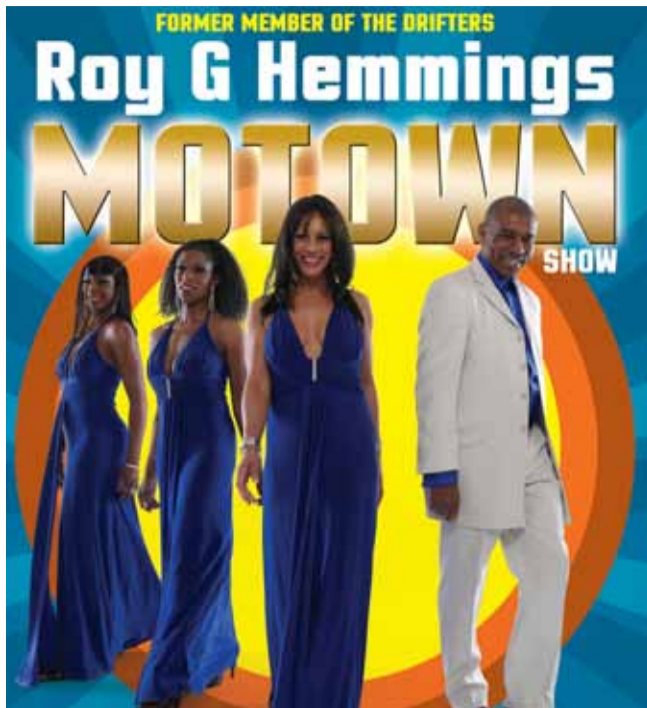
Upholstery, Blinds, Curtains, etc.
Whatever your furnishing needs,
ring Irene on
016973 31836

Motown at Beer Festival

Appearing again at the Silloth Music & Beer Festival this September will be ex Drifters member Roy G Hemmings' Motown Show, a celebration of timeless Motown and Soul songs.

With hits by The Supremes, Four Tops, Temptations and Marvin Gaye to name but a few. This electrifying show features such classic hits as "Baby Love", "Dancing In The Street", "My Girl", "I Can't Help Myself" and "I Heard It Through The Grapevine". Fronted by Roy G Hemmings who has been the longest serving member of "the Drifters" He has appeared at the White House for the then president Bill Clinton also at the Royal Albert Hall.

Also booked for the beerfest are Big Country who will be celebrating thirty years since the release of the Seer album which reached



number two in the UK album charts.

Tickets for the four day festival are now on sale with a great deal available on these

earlybird tickets.

Get them at Winters Newsagents.

Championing Carers

Could you be a Carers Champion, raising awareness of unpaid Carers in your community?

West Cumbria Carers is launching this new exciting volunteer opportunity to help raise awareness of the role of unpaid carers in local communities; particularly rural communities. We are looking for Volunteer Carer's Champions to act as a voice for our organisation in their community and help promote awareness and understanding of the role of Carers.

A Volunteer Carer's Champion would:

- Understand the role of a Carer (training will be given) and encourage them to contact West Cumbria Carers through providing them with information about the organisation;
- Share information on West Cumbria Carers and its



support services with Carers and the general public and help identify carers who may wish to receive our support;

- Assist with raising public awareness of West Cumbria Carers and the services we provide;
- Distribute and keep up-to-date literature and posters to relevant establishments such as health centres, libraries, local post offices, churches and community Centres

Being a Carer can have a significant impact on a person's life. The caring role is often the main responsibility of only one person and many carers say they are forced to ignore their own health or are unable to take breaks or attend appointments because of a lack of alternative care.

Carers often become socially isolated, losing touch with friends and family and many have to give up work, adding to feelings of loneliness and being cut off from others.

Volunteers are an essential and valued part of our services for carers and West Cumbria Carers like to ensure volunteers enjoy their role and that they are fully supported within their volunteering role.

All volunteers receive free

training to ensure they are able to start volunteering with confidence and are given ongoing support.

Volunteers don't need any special skills or experience though if they are sensitive and caring about others they will already have valuable qualities that will help to make a difference to the life of a Carer.

If you would be interested in being a Carer's Champion or would like more information about what is involved, we would very much like to hear from you. Please contact Angela Longrigg on 01900 821976, angelalongrigg@westcumbriacarers.co.uk

Cumbria Fire & Rescue Need Your Help

Cumbria Fire & Rescue Service is currently recruiting for Community Volunteers:

Would you like to make a difference in communities across Cumbria?

Do you have a passion for learning new skills and meeting new people?

Would you be interested in educating people by passing on vital fire safety messages?

Would you like to support the service in ensuring more people are trained in emergency lifesaving skills?

If you think that volunteering for Cumbria



Fire & Rescue Service appeals to you then visit our website at: <http://www.cumbria.gov.uk/cumbriafire/community/volunteers/default.asp>

Or contact Nicola Jackson (07825 011005) or Eileen Teasdale (07887 793970) for further details.



Buzz the Pixel by Liam from Holme St Cuthbert School



Mister Sun Times by Bobby Forbes from Holme St Cuthbert School

Gayle Warwick Fitness Sessions

- Mondays**
Clubbercise, Stanwix Holiday Park, Silloth, 5.45pm
Freestyle Fitness Yoga, St Andrews Church, Silloth, 7pm (Bring own mat)
- Tuesdays**
Clubbercise, Richmond Hill Primary School, Aspatria, 6.30pm
- Wednesdays**
Kettlebells, Silloth Sports Hall, 5.45pm
Metafit, Richmond Hill Primary School, Aspatria, 7pm
- Thursdays**
Metafit, Silloth Sports Hall, 6pm
- Contact Gayle 07725 990062 or Facebook profile Gayle Warwick

DONATE YOUR FURNITURE AND ELECTRICALS and we'll pick up your items for FREE

Your unwanted furniture and electricals can help us fight back against heart disease. We collect all sorts of items.

Call 01946 418 805 or book online at bhf.org.uk/collection

FIGHT FOR EVERY HEARTBEAT bhf.org.uk

©British Heart Foundation 2014, registered charity in England and Wales (225971) and in Scotland (SC039426).

ROBINSON Car & Commercial

24Hr Mobile: 07999 017769
Tel: 016973 31940

CAR - VAN - 4X4

Diagnostics
Repairs
Servicing
Body Work
Accident Repair

BUS - COACH - TRUCK - TRAILER

Diagnostics
Fleet Maintenance
Contracts
Inspections
Servicing
Repairs

24 Hr Assistance
MDT Steam Cleaning
Mobile & Workshop Service
VOSA MDT Preparation & Booking

PLANT - AGRI

Mobile & Workshop Service
Servicing
Repairs
Breakdown Assistance

MOT'S ARRANGED CLASS 4 - 5 - 7
CAR & VAN RECOVERY SERVICE

The Control Tower, Silloth Airfield, CA7 4NS

Make a New Years Resolution... become a volunteer with us!
You could make a difference to your community in 2016

We have a wide range of volunteering opportunities which include:

- Volunteer Carers Champion
- Volunteer Driver
- Volunteer Counsellor
- Volunteer Respite Sitter
- Volunteer Administration Roles

Could you spare some time to help deliver services to support or champion unpaid carers in West Cumbria? All our volunteers are greatly valued and well supported.

Find out more, contact us on 01900 821976 or email angelalongrigg@westcumbriacarers.co.uk
Website: www.westcumbriacarers.co.uk

Registered Charity Number: 1119369
Registered in England Number: 6123034

West Cumbria Carers

COMPUTER PROBLEM? No Problem

We are your local specialists for:

- Internet Problems
- Printer Problems
- Wireless Networking
- Computer Running Slow
- Advice for New Computers

Mark Hansford Computer Services
016973 32089

Pink Poodle

Grooming Salon

Fully Qualified Grooming Specialist

Dog Sitting

Sunflower Cottage
Blitterlees, Silloth CA7 4JN
Tel: 07519 223364

Slimming World Sillothians Lose Over 400 Stone!

The Award Winners



Super slimmer's in Silloth are losing weight by the size of a person every week, their total weight loss so far is over a whopping 400 stone since Denise opened the group on 31st January 2015 at Silloth RUFC on a Saturday morning.

She is so thrilled with the results she is opening a second group in Silloth on a Tuesday evening at 7pm at Silloth Primary School.

After Denise lost over 4 stone, she decided she wanted to help motivate and inspire other people struggling to lose weight, she had battled with her weight after her divorce and a miscarriage, so totally understands how people do battle with food.

Denise and her members follow Slimming Worlds optimising eating plan created by the organisations team of expert nutritionists, which encourages them to fill up on satisfying foods such as pasta, rice, potatoes, lean meat and fish, pulses and

fruit and veg.

John cook has lost over 7 stone he says "filling up on lots of satisfying foods means you're never going hungry so I've never felt as though I was on a diet. Before I joined slimming world I thought losing weight meant going to the gym and counting calories. But now I know its about making healthier choices about food and becoming a bit more active. Reaching this milestone as a group just proves the huge change to our lives, some people who have lost big amounts of weight have probably even saved their lives, I myself was a diabetic, now I have normal blood sugar levels and I am no longer classed as a diabetic. Its brilliant to celebrate together as well because that's how we've been losing weight - together. Every week we support and encourage each other and share tips and recipes, and on top of that we have a lot of fun. Its

not only people that have large amounts of weight to lose that come to Slimming World, some people that come along may only have a half stone or a stone to lose. The support and inspiration we get from our consultant Denise has also been integral to our success. Because she lost weight herself, she understands the ups and downs of slimming and can offer us help and advice based on her own experience, with out Denise I don't think we'd have achieved nearly as much."

Denise says "I'm delighted that my members have lost weight so beautifully. It has made a big difference to their lives and to their families lives, and all of them are happier and healthier. Opening the new group will give more people more opportunity to do the same. Slimming has never been more important, Cumbria has a high overweight obese percentage

Beth Montgomery & Colin Blakely

and I just want to help even more people to make real changes for life - there's no better job satisfaction than that."

Award Winning Slimmer's set to shine this party season

Slimming World at Silloth has four award winning slimmer's getting ready to celebrate in style this party season after winning weight loss competitions at the slimming world group at Silloth RUFC.

The 9am session Winners are:

Miss Slinky Angela Taylor who has gone from a size 24 now a size 16 and has lost an amazing 3 stone.

Mr Sleek John Cook has lost an awesome 7 stone and is no longer a diabetic and has gone forward to the national competition. John is no longer classed as diabetic.

The 11am session

John Cook & Angela Taylor

Winners are:

Miss Slinky Beth Montgomery reached her target weight the morning of the competition and got crowned Miss Slinky. Also in national criteria

Mr Sleek Colin Blakley after losing his weight ran the Cumbrian run this year in 2 hours and 3 minutes, also in national criteria.

Slimming Worlds annual Miss Slinky and Mr Sleek competitions recognise those members - both female and male - who have transformed both inside and out by becoming healthier and happier, slimmer and more confident - and look great in there seasonal party clothes. The national winners of both titles will win a £2,000 cash prize. Our group winners say they were thrilled to win their respective titles.

Consultant Denise is so proud of all of her members that were nominated and who told their stories. It was a very emotional morning in group, there were tears and laughter. It's hard for a woman to join a slimming club, but even more nerve wracking for a man, but Denise welcomes every member that walks through the door.

Denise says "Christmas is a time of year for getting dressed up and having a good time. However, when people are overweight they often dread it, because they feel uncomfortable and out of place at parties. That is if they don't make an excuse to avoid socialising altogether. I hope this year they will be accepting every invitation going, showing off their new figures.

I hope they'll inspire other people to lose weight too and show people that whether you've got a little or a lot of weight to lose, slimming down can make a big difference to how you feel about yourself and really boost your confidence."

Anyone who has been inspired by the Silloth Slimming world Miss Slinky and Mr Sleek is welcome to come along and join any Slimming World Group, Consultant Denise runs Silloth Group on a Saturday at 9 am and again at 11am at Silloth RUFC. On a Monday at 5pm and 7pm at Wigton Bowling Club.

Denise's new Silloth group starts on Tuesday 29th December at Silloth Primary school at 7pm, for more information or to join call Denise on 07799 708465.

Festive Lunch & Dinner

Monday 30th November to Saturday 2nd January

Lunch from 12-2pm	Dinner from 6-8:30pm
2 courses £11.95	2 courses £13.95
3 courses £13.95	3 courses £16.95

New Years Eve Masquerade Ball

Thursday 31st December

Glass of Bucks Fizz
Gala Buffet
7pm until Late
Disco by DJ Andy
£15 a Ticket (Tickets Only)

- Breakfast
- Morning Coffee
- Lunches
- Traditional Sunday Carvery
- All Local Produce
- Evening Meals

Sunday Carvery 12-2pm

Main course £9.95
Two courses £12.95
Three courses £15.95

016973 31438
www.golfhotelsilloth.co.uk

Silloth on Solway Community Shop

- * Local people working for local causes *
- * All proceeds go back into the community *
- * Please continue donating *
- * Collection can be arranged *

S.O.S.C.S.

Open every day
10am to 3:30pm
Tel: 32452

S.O.S.C.S.
12 Criffel Street
Silloth

Solway Community Technology College



Head Teacher Mrs Judith Schafer



Guest Speaker Caroline Hawley



Head Girl Madeleine Yarnold, Head Boy Josh Wilson & Guest Speaker Caroline Hawley



Our school prizegiving evening was held on 25th November and was a fantastic night. Celebrating success is always good, and this year was no exception. New Headteacher Judith Schafer welcomed everyone to school with a suitably festive speech reminding the audience about the school's new vision and values. Guest speaker was BBC TV journalist Caroline Hawley who entertained a hall packed with parents and guests with accounts of her (not traditional!) route from school to the top of her career before presenting this year's prizes.



Prizes for academic achievement were presented to the highest achieving students in all year groups, and it was as always lovely to see almost all last year's Year 11 students coming back to collect their GCSE certificates and awards. All the students who have stayed on to Sixth Form with us won awards which was great to see. Success for us is more than just academic brilliance however, and awards were presented for effort, community service and of course our outstanding sports boys and girls.



Delicious mince pies and shortbread from our award winning canteen finished off a lovely evening – we are as always tremendously well supported by the community and it was great to see so many guests, parents and ex-students catching up, and to hear so many positive comments about the school and its students.



A big thank you to Caroline for her time and to all our sponsors who help make this annual event so successful. See you next year!

(Following a fierce debate in the staff room there were in fact no winners in the How-many-Carols-were-there-in-the-Head's-speech sweepstake(there were 10!) as announced on our Facebook page.)

Photographs can be purchased from the Solway Buzz, there are more on the website

Prize Giving Evening 2015



Photographs of all pupils who attended can be viewed at: www.SolwayBuzz.co.uk

Children's Centre

Opening Hours:
Monday 9:30am to 12:30pm fortnightly for the Childminders group also
Monday 1pm to 3 pm term time
Tuesday 1pm to 3 pm term time
Wednesday 9:30am to 12:30 for Tots n Toddlers

Open at other times when the rooms have been booked, if you wish to use the Centre please call to make arrangements. We are more than happy to show people around, chat on a one to one basis or in small groups.

Contact Numbers:
Silloth CC - 016973 31230
Aspatia CC - 016973 22777
Wigton CC - 016973 49555

Arthritis Support

Wigton Area Arthritis Support Group meet on 1st Friday each month at West Street Bowling Club, Wigton @ 1pm to 3pm, details from Gladys 016973 43964

Silloth Tots/Toddlers

Silloth Tots & Toddlers meet in the Children's Centre, Silloth and is open to all children aged from 0 to 4 accompanied by a parent/carer. Sessions are on: Wednesdays: 10pm to 11:30am term time only
Entry is £1 per family and this includes refreshments
All Welcome
Call in for a friendly chat

Abbeytown Library

Abbeytown mobile library will stop outside the Wheatsheaf Inn at 1pm for an hour every Monday

Christ Church

For Christ Church baptisms and other church related business please contact: Rev Bryan Rothwell The Vicarage, Wigton Road Tel: 016973 31413

Civic Amenity Sites

Operated by Cumbria County Council. Tel: 01228 606060
Maryport Tip, tel 01900 66922 open daily 8am to 6pm
Wigton Tip, tel 016973 45617 open Tuesday, Thursday, Saturday & Sunday, 8am to 6pm

Production Team

Proprietor: Peter McRobert Barn Cottage Skinburness, CA7 4RA Tel: 016973 32180 Email: office@solwaybuzz.co.uk

Editorial Content This is down to you, we can only publish items if you send them to us. When sending articles in, please supply a contact name and number in case something requires clarification. Published by: Peter McRobert with the support of the whole community and an army of volunteers.

Please let us know of any changes within this section

Football Training

Silloth Football Club

Silloth Sports Hall
Juniors
Sundays at 10:30 to 11:30am
Men's Team
Tuesdays 6:30pm to 8pm
Thursdays 6:30pm to 8pm
Open to boys and girls. Membership forms available from all coaches.

Secretary: Stephen Hart 32706

Abbeytown Girls

Abbeytown Sports Field
Wednesdays 4-5pm

RNLI Shop

SILLOTH LIFEBOAT STATION SHOP OPENING HOURS
RNLI shop has now closed. Thank you to all our supporters, we look forward to seeing you next year. The shop will re-open at Easter.

Wednesday Bunch

Silloth Evangelical Free Church, Eden Street Wednesday Bunch. at 5pm every Wednesday, (except in school holidays) Fun, bible stories, quizzes, craft, games for 5-11s

Kickboxing Club

The Kickboxing Club is held in Christ Church Hall every Thursday night from 6:30pm to 7:30pm. All welcome. www.solwaykickboxing.webeden.co.uk

Ladies Fellowship

Silloth Evangelical Free Church, Eden Street Ladies Fellowship is on alternate Thursdays at 1:45pm. Warm fellowship, refreshments, and good speakers. All welcome

Breast-feeding Group

Mondays 10am to 11:30am Wigton Bowling Club, West Road, Wigton
Have a cup of tea and meet other breast-feeding mums. Support and advice is available from trained Breast-feeding Peer Supporters and from Health Visitors or Midwives. For more information call Wigton Health Visitors: 016973 66608

Abbeytown Lunches

Holm Cultram Abbey C of E School are providing Community Lunches every 2nd and 4th Friday of the month. Two courses and a drink for only £3.50 at 12:30pm (we can deliver locally too!) to book tel: 016973 61261

Bridge Group

Meet on Wednesday evenings from 7 till 9pm, at the Golf Club to play Duplicate. Information from mike.md@btinternet.com.

Dates for the Diary

December

19th Silloth RUFC Silloth v Wigton
20th Silloth Football Club annual Christmas Kids Party in the Rugby Club from 3 to 5pm with Santa visiting

January 2016

9th Silloth RUFC Whitehaven v Silloth
11th Silloth Town Council meeting in Silloth Community Hall at 7pm
14th Causewayhead WI meeting in Methodist School Hall at 2pm for members afternoon
16th Crunch Service in Skinburness Road Car Park from 8am to 9:45am
16th Silloth RUFC Silloth v Hawcoat Park
19th AGM of Silloth Christmas Lights Committee in Silloth Cafe at 7pm, all welcome
21st Chamber of Trade meeting in Golf Hotel at 7pm open to all
23rd Silloth RUFC Silloth v Bolton
23rd Burns Night in St Andrews Church Hall 7pm to 9:30pm
29th RNLI Quiz Night in Mrs Wilson's at 7:30pm, team of 4 £5 inc light supper, pre-book on 016973 31155
30th Silloth RUFC St Benedicts v Silloth

Martial Arts

Silloth Dragons Mixed Martial Arts Club train in Christ Church Hall on Thursdays under 12's 6:45pm to 7:30pm 12's & over 7:30pm to 8:30pm
NEW MEMBERS WELCOME For further details contact Stephen on 07811 761033

Blencogo Art Group

Every Monday from 1:30-4:30pm in Blencogo Village Hall where members help each other. Refreshments provided, regular outings, tel 016973 61158 or 61327

First Responders

Silloth Community First Responders train on the first and third Tuesday of every month in Silloth Fire Station at 7pm.

NatWest Mobile

The NatWest mobile van will be outside Silloth Community Centre on Mondays from 1pm to 2:15pm and Fridays from 9:45am to 11:30am.

Tourist Information & Library

Opening Times
Monday 10-1pm 2-5pm
Tuesday CLOSED
Wed 10-1pm 2-5pm
Thursday CLOSED
Friday 10-1pm 2-5pm
Saturday 10-1pm
Tel: 016973 31944

Local Links desk closes at 4pm

February

1st Silloth Town Council meeting in Silloth Community Hall at 7pm
6th Coffee Morning in the Recreation Hall at 10am with Silloth & District Pensioners
9th Holme Low Parish Council meeting in Silloth Community Hall at 7:30pm
11th Causewayhead WI meeting in Methodist School Hall at 2pm
13th Crunch Service in Skinburness Road Car Park from 8am to 9:45am
13th Pancake Coffee Morning in St Andrews Church Hall from 10am to 12 noon
13th Silloth RUFC Silloth v Upper Eden
17th Dracula Comes to Mawbray in Culterham Hall
18th Chamber of Trade meeting in Golf Hotel at 7pm open to all
18th Dracula Comes to Mawbray in Culterham Hall
19th Dracula Comes to Mawbray in Culterham Hall
20th Silloth RUFC Aspatia v Silloth
20th Dracula Comes to Mawbray in Culterham Hall

March

5th Coffee Morning in the Recreation Hall at 10am with Silloth & District Pensioners
5th Children's Crafts making Mothers Day cards from 2pm to 5pm in St Andrews Church Hall
5th Silloth RUFC De la Salle (Salford) v Silloth
7th Silloth Town Council meeting in Silloth Community Hall at 7pm
10th Causewayhead WI meeting in Methodist School Hall at 2pm
11th RMW3, the Retro Music Weekend at Stanwix Park
12th RMW3, the Retro Music Weekend at Stanwix Park
13th RMW3, the Retro Music Weekend at Stanwix Park
12th Crunch Service in Skinburness Road Car Park from 8am to 9:45am
12th Italian Night in St Andrews Church Hall from 7pm to 9:30pm

Slimming World

Saturday Slimming World first group meet in Silloth RUFC from 9am to 10:30am then the second group meet from 11am to 12:30pm
Also at Silloth Primary School from 7pm on Tuesdays Tel Denise on 07799 708465.

Wigton Cancer Support

Open to anyone who has/is living with cancer or anyone caring for someone with cancer. Feel free to drop in for a chat and refreshments any time between 2pm and 5pm on the second Wednesday of each month, at Wigton Bowling Club. For further information please contact: Gill Edmondson Tel: 016973 71696 Carole Storey T: 016973 44410

March cont'd

17th Chamber of Trade meeting in Golf Hotel at 7pm open to all
19th Silloth RUFC Silloth v Fleetwood
26th Children's Crafts, Easter Egg decorating in St Andrews Church Hall from 2pm to 5pm in St Andrews Church
2nd Coffee Morning in the Recreation Hall at 10am with Silloth & District Pensioners
2nd Silloth RUFC Oldham v Silloth
4th Silloth Town Council meeting in Silloth Community Hall at 7pm
9th Silloth RUFC Silloth v Tyldesley
9th Bingo in St Andrews Church Hall from 7pm to 9:30pm
13th Causewayhead WI meeting in Methodist School Hall at 7:15pm
16th Silloth RUFC Aldwinians v Silloth
23rd Silloth RUFC Silloth v Ashton-under-Lyne
23rd Children's Crafts, St Georges Day in St Andrews Church Hall from 2pm to 5pm in St Andrews Church Hall

May

7th Silloth RUFC Presentation night
9th Silloth Town Council meeting in Silloth Community Hall at 7pm
10th Holme Low Parish Council meeting in Silloth Community Hall at 7:30pm
11th Causewayhead WI meeting in Methodist School Hall at 7:15pm
21st Beetle Drive in St Andrews Church Hall from 7pm to 9:30pm
29th Silloth Green Day

Errors do occur in Dates for the Diary Please check before attending an event

Indoor Bowling

Mondays from 5th October until the end of March from 7pm to 9:30pm in Abbeytown Village Hall

Doors Open Lunch

'Our Doors Open' meets in St Andrews Church every Tuesday from noon to 1pm for a light lunch with good fellowship for a donation only.

Crafting Group

Interested in crafting? come along to Silloth Crafting Group on Wednesdays from 1:30 to 3:30pm at the Methodist Church Hall. We are a well established group, friendly people with a variety of crafting talents-willing to share their knowledge. Enjoy the chat and learn from the other crafters, or just sit and chat.

June

6th Silloth Town Council meeting in Silloth Community Hall at 7pm
8th Causewayhead WI meeting in Methodist School Hall at 7:15pm
10th SSW at Stanwix Park book at www.sswevents.com
11th Silloth Vintage Rally
11th SSW at Stanwix Park book at www.sswevents.com
12th Silloth Vintage Rally
12th SSW at Stanwix Park book at www.sswevents.com
18th Children's Crafts, Fathers Day cards in St Andrews Church Hall from from 2pm to 5pm in St Andrews Church Hall

July

2nd American 4th July Night in St Andrews Church Hall from from 7pm to 9:30pm
4th Silloth Town Council meeting in Silloth Community Hall at 7pm
13th Causewayhead WI meeting in Methodist School Hall at 7:15pm
30th Abbeytown Carnival

August

9th Holme Low Parish Council meeting in Silloth Community Hall at 7:30pm
27th Strawberry Cream Tea in St Andrews Church Hall from 2pm to 4pm

September

3rd RAFA Leek Show
5th Silloth Town Council meeting in Silloth Community Hall at 7pm
8th Silloth Music & Beer Festival on the Green
9th Silloth Music & Beer Festival on the Green
10th Silloth Music & Beer Festival on the Green
11th Silloth Music & Beer Festival on the Green
14th Causewayhead WI meeting in Methodist School Hall at 7:15pm
24th Laurel & Hardy Film Night in St Andrews Church Hall from 7pm to 9:30pm

Have You Sent In Your Dates Yet?

Do you have an event in the area bounded by Abbeytown, Mawbray, Silloth, Skinburness, if so please let us know.

Please note that articles, letters and virtually all content of the Solway Buzz are contributed by YOU, the local community. The Editor reserves the right to control what is included, however, no responsibility whatsoever for the content of the Solway Buzz can be accepted by the Editor, or the Publishers.

Copy Date



Copy date for the February/March issue is: 3rd January 2016

If your organisation has an event to promote or you have something to say, please note the next copy date.

Poems

No Snow
Mrs Jennifer Bailey

We get no snow in Silloth
I know to my regret,
We moved up North from 't Midlands
Now we'll get some snow I'll bet!

We'll build some giant snowmen
The best you've ever seen,
There'll be snowball fights aplenty
All meeting on the green.

With stalls of chestnuts, peas and spuds
My appetite was whet,
But we get NO SNOW in Silloth,
I know to my regret!

(Or will Silloth prove me wrong?)

Ode to a Turkey
by Penny Stimson

I'm a turkey gobble, gobble,
And I do no one any harm
I spend my days just pecking
And scratching round the farm.

I'm a turkey gobble, gobble,
And now the weathers cold
The farmers wife is looking at me
And said "I'm getting old"!

I'm a turkey gobble, gobble,
And I've heard the others say,
The farmers wife will stuff me
And eat me on Christmas Day.

I'm a turkey gobble, gobble,
I do no one any harm,
I'm happy just scratching
And pecking on the farm.

So think of me on Christmas Day
As I'm laying on me back,
All buttered up, legs in the air,
And me feathers in a sack!

I'm a turkey gobble, gobble,
So do be careful mum
When you put the stuffing in my neck
And the onion up my bum!!



Letters

Dear Buzz,

On behalf of the Harlequin Choir whose event in Christ Church Hall had to be postponed at short notice on Friday 4th December because of the storms, the committee would just like to apologise. The event will be rearranged in the new year.

We wish all our supporters a very happy festive season.

Margaret English

Dear Buzz,

Having received our Solway Buzz, we were pleased to see Wirksworth mentioned. I was called up in 1941 at Darley Dale for military training for a month, then to Wirksworth to learn to drive military vehicles. We were mainly driving in the dark, about six lorries followed each other with just a small light on the differential box. We had a bit of railway line welded to both front and rear, so when one stopped, we all stopped.

We were sent to Africa, Italy and Greece supplying any troops needing supplies of any sort, until the war ended. My R.A.S.C. number was T259763. I have four medals, 1939-1945 Star, Africa Star, Italy Star and Georgivs Medal.

W Foster

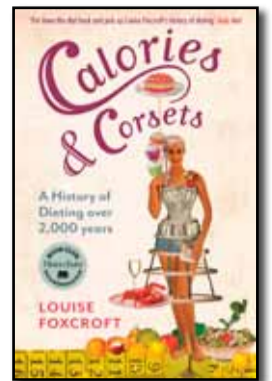
Cumbrian Reads

Supported by Anne Carruthers Cumbria Library Service

Relax with a good Festive Read

Calories and Corsets
by Louise Foxcroft

This tells the epic story of how we have tried – and failed – to battle the bulge, and how the fashions and fads of body shape have changed over time. Meticulously researched, surprising and sometimes shocking, it takes stock of the dieting tradition, and examines the ideas that have recurred through the ages.



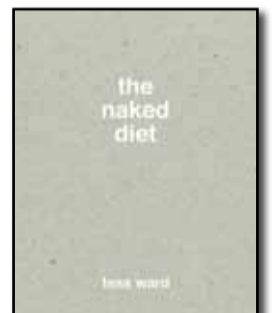
Drawing on material from letters, medical journals and the dieting best-sellers we devour. Louise Foxcroft reveals the extreme and often absurd lengths people will go to in order to achieve the perfect body. This unique and witty history exposes the myths and anxieties that drive today's multi-billion pound dieting industry – and offers a welcome perspective on how we can be healthy and

happy in our bodies. Did you know? "In the 1870s, weighing scale companies began producing their machines for people as well as for foods and produce." With the first public penny scales appearing on railway stations, in shops and restaurants, hotels and even cinemas...

The Naked Diet

by Tess Ward

The Naked Diet is a transformative new approach to clean eating with stripped-back; fresh recipes that will give you more energy, help you lose weight and purify your body.



Mango and coconut ice cream. This is an alternative ice cream recipe for anyone who is allergic to eggs:

- 2 large ripe mangos
- Finely grated zest and juice of 1 lemon
- 2.5 cm piece of fresh ginger: grated
- 250g honey or maple syrup
- 500ml thick coconut milk

1. Peel the mangos and cut the flesh into pieces. Add to a saucepan with the lemon zest and ginger. Unless the mangos are really ripe, add a few tablespoons of water.
2. Cook over a medium heat, stirring for 10 minutes until tender. Reduce the heat and continue to cook for 15-20

minutes, until it has a jam-like consistency.

3. Remove from the heat and cool to room temperature. Transfer to a food processor, add the rest of the ingredients and process briefly: don't over-mix, as it's nice with some fruit pieces. Chill in the fridge before churning in an ice-cream machine for about 25 minutes, or according to the machine's instructions. If not serving it straight away, put it in the freezer.

Local Authors First Thriller

Abandoned
by Lee Shepherd

Debut local Carlisle author Lee Shepherd has released a fast-paced, controversial and perplexing psychological novel.

A rural area in the north of England is thrown into disrepair as teenage girls start to go missing, and local authorities are at a loss in their search for the one responsible.



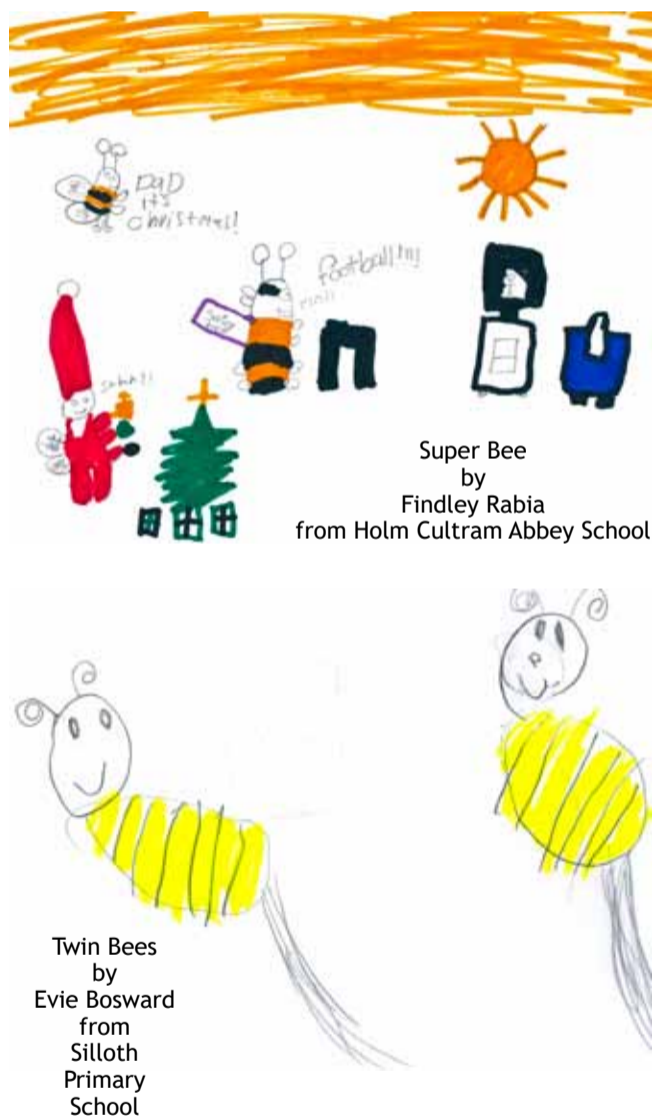
Charles Lee lives a very normal life, in stark contrast to his troubled past. Putting years of abuse, neglect and loss behind him, he has built a new life in the countryside with his beloved family and border collie. Yet all is not as it seems as his past soon starts to haunt him, as burned bridges are resurrected, old grievances resurface and a lust for revenge takes over.

Will Detective Taylor and psychological profiler Georgina Riley uncover the clues and piece together the jigsaw in time to stop the disappearances?

In this controversial new

psychological thriller, we are introduced to first time novelist Lee Shepherd. After spending years writing in his spare time, producing anything from poetry to children's stories for his own two children, he decided that the time was finally right to attempt to fulfil his life-long ambition of creating a full length novel.

Lee lives in Carlisle in the heart of Cumbria.



Super Bee by Findley Rabia from Holm Cultram Abbey School

Twin Bees by Evie Bosward from Silloth Primary School

Masthead Winner

Carlisle Embroidery are generously donating a Solway Buzz embroidered Polo Shirt to the winner. This is in addition to the usual Winners Certificate and £5 Gift Voucher. So, come on kids, get drawing, the Buzz is always looking for more imaginative bees and yours might be the next winner. Send them in to the address on page 10 and a quality Solway Buzz embroidered Polo Shirt from Carlisle Embroidery could be yours.

This month the winner is Jessica from Holme St Cuthbert School with a bee drawing called "Twin Bees".

Well done!



You don't have to be at school here to send a bee to us. If you are here on holiday we would love to receive your bee drawing. Pick up a form from Silloth Tourist Information and return it there or send it to us, our address on page 10.

Silloth Local Link Library & Tourist Information

Christmas Opening Times

23/12/15 10am to 5pm

Closed between 24/12/15 and 01/01/16

ReOpen on: 02/01/16 10am to 1pm

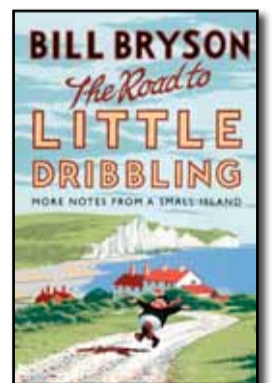
Have a very Happy Christmas and New Year

Tel: 016973 31944

The Road to Little Dribbling

by Bill Bryson

Twenty years ago, Bill Bryson went on a trip around Britain to celebrate the green and kindly island that had become his adopted country. The hilarious book that resulted, Notes from a Small Island, was taken to the nation's heart and became the bestselling travel book ever, and was also voted in a BBC poll the book that best represents Britain. Now, to mark the twentieth anniversary of that modern classic, Bryson makes a brand-new journey round Britain to see what has changed.



Following (but not too closely) a route he dubs the Bryson Line, from Bognor Regis to Cape Wrath, by way of places that many people never get to at all, Bryson sets out to rediscover the wondrously beautiful, magnificently eccentric, endearingly unique country that he thought he knew but doesn't altogether recognize any more. Yet, despite Britain's occasional failings and more or less eternal

bewilderments, Bill Bryson is still pleased to call our rainy island home. And not just because of the cream teas, a noble history, and an extra day off at Christmas.



Local Tradesmen and Services

Administration

The Bookkeeper
Bookkeeping, Payroll,
VAT, Administration and
Self Assessment Returns
Angela Ellwood MICB
Tel: 07919 121575
angela.ellwood@yahoo.co.uk

Caravan Repairs

J. SCOTT
GAS SERVICES

Motor Caravan & Caravan Repairs

- Servicing
- Re-Sealing
- Gas Servicing
- Interior Repairs
- Chassis Repairs
- Damp Repairs
- Accident Repairs
- Van to Motorhome Conversions

Tel: 016973 49400
07823 440813

Decorators

Mike Jones
Painter & Decorator

All aspects of interior and exterior painting and decorating.

Domestic and commercial.

Friendly and reliable service.

Free quotes and advice!

Tel Silloth: 07842 355486
E: mikedecorator53@gmail.com

Peter Farnier
PAINTER & DECORATOR

Tel: 016973 33039
Mob: 07900 914484
Email: pelisethan@sky.com

RELIABLE SERVICE
Papering
Internal & External Decorating
Domestic & Commercial
Insurance Work
Free Estimates
Competitive Quotes

SAFEcontractor

Denture Repairs

Addison Orthodontics
Dental Repair Service
54 Esk Street
Silloth, t: 016973 32208

Electricians

Steven Henderson Electrical
All Electrical Work Undertaken
Fully Registered Installer
Tel 016973 31163
Mob 07553 468819

Firewood

Seasoned Firewood Logs

DELIVERY AVAILABLE

Tel: Ashley Sharp
016973 31495
07762 772208

Whinclose Firewood
Delivery Available
Tel: Roy Ivinson
Mob: 07949 358396

Gardening

Callum Findlay Garden Services

Grass & Hedge Cutting

Compact Tractor Flail Mowing & Paddock Topping
Garden Fencing
General Maintenance
Tel: 07765 314597
callumfindlay@ymail.com

Garden Services
Grass & Hedge Cutting
Pruning & Tree Surgery
General Maintenance
Tel Allen: 07768 496313



Joiners

DAVID READ
Carpentry & Joinery

Property Repairs & Maintenance

FREE ESTIMATES

No Job Too Big Or Too Small

City & Guilds Approved with 30 years Experience

016973 32245
07759 783823

OUTDOOR JOINERY

All outdoor joinery work

Maintenance & Repair work of all kinds

Laminate flooring fitted

Tel Norman on:
016973 61256 or
0785 754 7783

Stephen Fraser
Qualified Joiner
Joinery & Kitchen Fitting
Local & Reliable
No job too small
Tel: 07809 870604

Plant Hire

DIGGERS For HIRE

JCB 8026
Ideal for little jobs. Driveways and around the Garden.

JCB 86-C1
Suitable for housing sites, ideal around the Farm.

JCB JS 220LC
The big jobs, Stripping ground, Demolition, Crushing, etc.
Tel Eric Stanwix, Silloth:
07736 774 788
also available to Drive
Freelance on other Diggers
CPCS 360 above and below Ten ton CSCS Card

Stuff to Move
Ask about our Man with a Van

Plumbers

KMG Plumbing & Heating
Gas, LPG, Oil, Solar & Solid Fuel systems
Experienced and Local
Tel: 01900 881476
Mob: 07590 522621

Stuart James
Domestic Plumbing & Bathroom Installation, also Tiling
Reliable and Local
Tel: 07763 677752

07805 04502
016973 32263

Julie Ross
Plumbing & Heating

Installation, maintenance & repair of domestic plumbing and gas heating systems

Julie is a fully qualified & registered plumbing & heating specialist

558240
www.julierossplumbing.com

M. TAYLOR

Over thirty years experience in the installation, maintenance and repair of domestic gas and heating systems, all aspects of domestic plumbing undertaken no job too small, local and reliable

Tel: 016973 32672
Mob: 07773 069856

Window Cleaners

Abbey Cleaning Services
Call Ryan on 016973 61162 or 07732 270844 working throughout Abbeytown, Silloth & surrounding areas

Advertise in the Tradesmens Section

Roofers

ABBEY ROOFING

Specialist in all types of roofing work including:

Complete Re-roofing • Roof Repairs
Insurance Work • Storm Damage • Grant Work
GRP Fibreglass Flat Roofing • Velux Windows

Penrith: 01768 758 573
Carlisle: 01228 808 874
Whitehaven: 01946 878 096
Workington: 01900 838 188

WWW.ABBEYROOFINGCUMBRIA.CO.UK

Allerdale & Eden ROOFING SERVICES

Slating & Tiling • Repairs • Lead Work
Flat Roofing Specialist
Fascias & Guttering
Velux Window Installations
Storm Damage • Insurance Work
Free Estimates and Free Advice

Maryport: 01900 813517
Whitehaven: 01946 313103
Mobile: 07518 454396

www.allerdaleandedenroofingservices.co.uk

PM Roofing Specialists

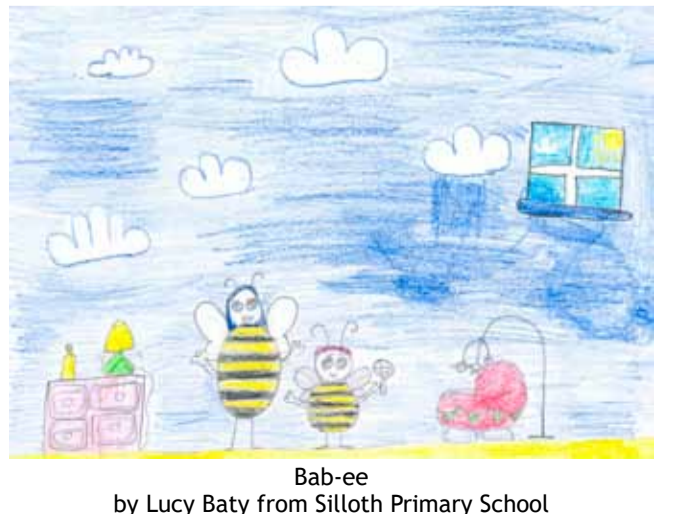
Proprietor Peter McKie, Established 1980

No job too big or small
Re-slating, Tiling, Chimney Stacks
Flat Roofing Specialists
(Firestone rubber cover & GRP Fibreglass with 30 year guarantee)
uPVC Guttering, Facias & Soffits
Insurance Claims * Free Estimates

Tel: 01228 548591
Mob: 07931 362163 or 07833 305647

When something needs doing Get It Done!

Advertise Tradesmens Section
only £121 for ten issues or a 7cm box for only £216.75 for ten issues



On the Water Front

Report by: Captain Slog

November 2015 Shipping 7th. Birgit G with fertilizer from Antwerp, then in ballast to Liverpool. 17th. Fluvius Axe with fertilizer from Ghent, then in ballast to Fowey.

Solway / Liverpool Shipping Services - Part 2

With the closure of Port Carlisle, and anticipating that future shipping services from the upper Solway, to destinations like Liverpool and Dublin or Belfast, would soon operate from the dock being built at Silloth, the Silloth Bay Steam Navigation Company (SBSNCo) was founded in 1856.

In 1857, when the pier at Silloth first became operational, Silloth inherited the upper Solway to Liverpool service, along with services to Ireland, which had previously operated from Port Carlisle or Annan. The SBSNCo introduced the newly built screw ship 'Silloth' and the 'Prince of Wales' on the twice weekly service to Liverpool. But in October 1861, the 'Prince of Wales' was found unfit for further service and had to be withdrawn.

In 1864 and due to financial difficulties, the SBSNCo was taken over by the North British Steam Packet Company (NBSPCo). In 1866, the new company purchased a new ship called the 'Kittiwake', built at Lanark, to assist the 'Silloth', on the Liverpool service. Twelve years later, in 1878, they bought the 'Albatross' to replace the 'Silloth', which was moved to the Dublin service.

In February 1882, the 'Kittiwake' was sold to a Liverpool ship-owner and the 'Silloth' returned to assist 'Albatross' with the lucrative Silloth - Liverpool service.

Sadly, just one month later, the old 'Kittiwake', under her new ownership, became stranded and was wrecked on the Isle of Whithorn.

In 1885, both the Liverpool service ships 'Silloth' and 'Albatross', were part of a small procession of vessels that took part in the New Dock opening ceremony. 'Silloth' had previously been the lead ship to open the Marshall Dock back in 1859.

In December 1894, the 'Albatross' was unfortunately driven ashore off Silloth in a



Both these images are reported to depict the SS Silloth, it probably looks more like image B.



Albatross

severe gale, ending up on the beach by Silloth Baths, to the north of the dock entrance.

After several attempts during a succession of high tides, with the assistance of a tug and some excavation of the beach, she was re-floated on 10th February 1895 and towed to Liverpool for a survey and repairs to her rudder.

It was in 1896, that the ageing 'Silloth' was finally sold and replaced by a newly built steamer which was given the name 'Kittiwake', after the earlier vessel that had faithfully served this route.

The popular 'Albatross' and the second 'Kittiwake' soon became well established and successfully maintained the twice-weekly passenger and freight service in tandem between Silloth and Liverpool.

During the 1st World War, (1914-18), the regular sailings of the 'Albatross' and the 'Kittiwake' were occasionally suspended when German U-Boat activity was reported in the northern Irish Sea.

Towards the latter part of that war, the 'Kittiwake' was commandeered by the Admiralty, for Government service in the North Sea, that was until the December 28th 1918, when she was returned to the NBSPCo. However, a collapse of demand on the Liverpool to Silloth service by sea meant

comfortable than the previous sea passage could guarantee.

The 'Albatross' was also laid up for a while after the war, then chartered briefly to the Laird Line, running between Glasgow and Londonderry before finally being sold on 19th April 1919 to London shipbroker Martin Constant of London. So ended the long-standing twice weekly shipping service between Liverpool and Silloth, which had been established back in 1857.

In 1920, having sold the 'Albatross' and 'Kittiwake', the North British Steam Packet Company was absorbed into the parent North British Railway Company, its only remaining vessel then being the resident Silloth paddle tug 'Petrel'



Kittiwake

Tide Tables

JANUARY 2016		SILLOTH							
		DEPTH ON NEW DOCK GAUGE							
		High Water				Low Water			
Date		Morning		Afternoon		Morning		Afternoon	
		Time	m	Time	m	Time	m	Time	m
1	F	03 54	5.9	16 15	6.0	10 30	0.3	23 12	0.3
2	SA	04 46	5.4	17 11	5.5	11 16	0.6		
3	SU	05 47	5.1	18 18	5.2	00 03	0.5	12 15	0.7
4	M	06 57	5.1	19 27	5.2	01 09	0.6	13 27	0.8
5	TU	08 03	5.2	20 30	5.4	02 16	0.5	14 37	0.6
6	W	09 00	5.6	21 25	5.7	03 16	0.3	15 39	0.3
7	TH	09 48	6.1	22 10	6.2	04 09	0.0	16 31	0.0
8	F	10 29	6.5	22 50	6.5	04 56	-0.3	17 20	-0.4
9	SA	11 08	7.0	23 29	6.9	05 42	-0.5	18 07	-0.6
10	SU	11 47	7.3			06 26	-0.7	18 52	-0.8
11	M	00 08	7.1	12 24	7.5	07 09	-0.9	19 36	-0.9
12	TU	00 47	7.3	13 07	7.6	07 52	-0.9	20 20	-1.0
13	W	01 32	7.3	13 51	7.6	08 35	-0.9	21 02	-1.0
14	TH	02 16	7.2	14 36	7.5	09 15	-0.8	21 42	-0.9
15	F	03 03	7.0	15 26	7.2	09 57	-0.6	22 26	-0.6
16	SA	03 54	6.6	16 20	6.9	10 43	-0.3	23 15	-0.4
17	SU	04 53	6.2	17 23	6.4	11 37	-0.1		
18	M	06 02	5.9	18 36	6.2	00 13	-0.1	12 43	0.1
19	TU	07 18	5.7	19 49	6.1	01 24	0.0	14 01	0.1
20	W	08 30	6.0	20 59	6.3	02 40	0.0	15 19	-0.1
21	TH	09 33	6.4	21 59	6.5	03 52	-0.2	16 29	-0.4
22	F	10 26	6.7	22 51	6.9	04 53	-0.4	17 28	-0.6
23	SA	11 13	7.1	23 36	7.1	05 47	-0.6	18 20	-0.9
24	SU	11 54	7.3			06 34	-0.7	19 05	-0.9
25	M	00 16	7.2	12 31	7.4	07 14	-0.8	19 46	-1.0
26	TU	00 53	7.2	13 09	7.4	07 50	-0.8	20 22	-0.9
27	W	01 29	7.1	13 43	7.2	08 23	-0.6	20 55	-0.7
28	TH	02 02	6.9	14 17	7.0	08 54	-0.5	21 24	-0.5
29	F	02 37	6.5	14 51	6.6	09 22	-0.3	21 51	-0.3
30	SA	03 14	6.2	15 30	6.2	09 53	0.0	22 22	0.0
31	SU	03 54	5.7	16 13	5.7	10 29	-0.2	23 01	0.3

Times shown in UTC. Add 1 hour for British Summer Time.



'Albatross' (nearest) and 'Yarrow' in the New Dock, at the Liverpool and Dublin berths respectively

Phone Book

This section recognises those whose financial help keeps us going. If you wish to contribute in this way without taking an advert, please contact the Buzz, it costs only £50 a year.

- Abbey Cleaning Services 07732 270844
- Abbey Roofing 01900 838188
- Addison Orthodontics 016973 32208
- Allerdale & Eden Roofing Serv' 01900 813517
- Beacon Veterinary Centre 016973 20242
- British Heart Foundation 01946 418805
- Callum Findlay gardener 07765 314597
- Computer Problems 016973 32089
- D A Harrison 016973 42277
- David Allen Accountant 01228 711888
- David Read joinery 07759 783823
- Digger Hire 07736 774788
- Garden Services 07768 496313
- Gayle Warwick Fitness 07725 990062
- Golf Hotel 016973 31438
- Good Companions 016973 31553
- Hair She Goes 07857 989358
- Harrisons Store Ltd 016973 61231
- J Scott Caravan Repairs 07823 440813
- Jackie's Footcare 016973 32373
- Jaybees 016973 31245
- Julie Ross Plumbing 07805 045052
- KL Express 016973 33033
- KMG Plumbing & Heating 07590 522621
- M & C Taxis 07917 564583
- Markley Storage 016973 31276
- Mike Jones Decorator 07842 355486
- Mike Taylor Plumbing 07773 069856
- No. 17 Delicious 016973 32458
- Outdoor Joinery 016973 61256
- Peter Farrier painter 016973 33039
- Photography by Peter 016973 32180
- Pink Poodle 07519 223364
- PM Roofing Specialists 07931 362163
- Queens B & B 016973 31373
- Robinson Car & Commercial 016973 31940
- Sandra Hickebottom foot health 07951 312513
- Seasoned Firewood Logs 07762 772208
- Silloth Cafe 016973 31319
- S.O.S.C.S. 016973 32452
- SeavorChartered 01228 492729
- Slimming World (Denise) 07799 708465
- Solway Private Hire 016973 32310
- Solway Squirrel Group 01228 711520
- Spar 016973 31293
- Stanwix Park 016973 32666
- Stephen Fraser Joinery 07809 870604
- Steven Henderson Electrical 016973 31163
- Stuart James Plumbing 07763 677752
- Tanglewood Caravan Park 016973 31253
- The Bookkeeper 07919 121575
- The Charity Shop 016973 31696
- The Lowther Bar & Restaurant 01900 881750
- The Wave Centre 01900 811450
- Top 2 Toe Beauty Salon 016973 31591
- Top Secret Roadshow 07736 774788
- Upholstery, Irene Armstrong 016973 31836
- West Cumbria Carers 01900 821976
- West Silloth Motors 016973 32833
- Wheyrigg Hall Hotel 016973 61242
- Whinclose Firewood 016973 61273
- Winters Post Office 016973 31323



Advertise

in the Tradesmens Section

only £121

for ten issues or a 7cm box for only

£216.75

for ten issues

Useful Tel Numbers

- Age Concern Home Safety Scheme 01946 68986
- Chemist, Silloth: 016973 31394
- Community Bus Dave 016973 31785
- Com'ty Bus Lawrence 016973 31257
- Community Grants: 01900 325013
- Crime Stoppers: 0800 555 111
- Dental Emergency: 01228 603620
- Dentist, Buchanan: 016973 31270
- Dentist, Steel: 016973 32042
- Doctor: 016973 31309
- Doctor CHOC service 03000 247 247
- First Responders can only be called by the Ambulance service, call: 999
- Gas: 0800 111 999
- Highways Hot Line 0845 6096609
- Hospital: 01228 523444
- Holme St. Cuthbert School
- Mawbray: 01900 881242
- Holm Cultram Abbey CofE School
- Abbeystown: 016973 61261
- MP, Tony Cunningham: 01900 65815
- NAP 01900 702898
- Neighbourhood Forum: 01900 325013
- Police: 101
- Quakers, Wigton: 01228 523174
- Register Office, Wigton: 01228 221122
- Samaritans: 01228 544444
- Silloth Community School: 016973 31234
- Silloth Library 016973 31944
- Silloth Nursery & Junior School: 016973 31243
- Silloth Town Clerk: 016973 31128
- Allerdale B. Council 01900 702702
- Silloth Tourist Information Centre: 016973 31944
- Solway Buzz: 016973 32180
- Solway Private Hire: 016973 32310
- Vet: 016973 20242
- Waste Disposal Dept: 01900 702800
- Water LeakLine: 0800 33 00 33
- Please, let us know what you want included, also any changes to numbers.

Silloth's Railcar - The Wirksworth Connection

Story by: Neil Ferguson-Lee
Part 2 of 2

Wirksworth Connection

Leaving the Midland Main Line at Duffield approximately five miles north of Derby, the 8½-mile Wirksworth branch did not enjoy the same fortune as the line to Silloth. Opened in 1863, the single-track line had been built as a tactic by the Midland Railway as part of a plan to reach Manchester.

Because a stretch of line between Ambergate and Rowsley was under the control of the arch-rival London & North Western Railway, the Midland had proposed an alternative route to Rowsley through Wirksworth. Once the first section between Duffield and Wirksworth was authorised, the L&NW seceded control of the Ambergate section to the MR and so the Midland was committed to build a line that it no longer required. It had not followed-through on powers to build beyond Wirksworth to Rowsley which was fortunate as it would have required a two mile long tunnel.

Wirksworth lost its passenger service in June 1947. Suspended as a result of a decision by the LMS to economise in the face of post-war coal shortages, the newly-formed British Transport Commission had no interest in restoring services (BTC also owned the local bus company).

The line did, however, keep busy with limestone traffic from the town's quarries, while its proximity to Derby meant that the line was often used for trials and testing. In the first few years of the 20th century, the Midland used the branch for an experimental cab signalling system, while in an attempt to economise the operation of several branches in the vicinity (Wirksworth, Ripley and Melbourne), the company operated a curious railmotor service using a tank engine coupled to a former Pullman carriage.

With the coming of the new diesel railcars, the Wirksworth branch would assume a special significance. As each unit was released from Derby Works, it needed somewhere to receive a 'shake down' test - a location where all the functions of these new trains could be checked-out while, should anything go wrong, the unit would not 'stop the job' and hold-up trains on the main line. Wirksworth fitted the bill nicely - close to Derby, the route to the junction at Duffield had four tracks so a broken-down train could be avoided, while the 8½ mile trip to Wirksworth included a fair gradient to test the engines and transmission (and brakes in the opposite direction).

In consequence, almost

every railcar built at Derby was to find its way to Wirksworth under test and it was regarded as a good day out with a chance to visit the pub at Wirksworth.

The 30 mph speed limit between Wirksworth and Idridgehay was raised to 70 on one stretch so as to allow the units to accelerate up to their maximum speed and prove that the speed governor would engage. In turn, because the units were not yet ready for service, they often ran with the inspection hatches in the floors removed so as to allow ready access to any equipment that might require adjustment. While this was useful for the technicians, a collision with one of the many pheasants likely to be encountered on the line could result in the train's interior being filled with feathers!

What happened next

The next decade and a half saw the most dramatic change in the fortunes, finances and structure of Britain's railways that could ever be imagined.

In December 1954, The BTC published the Modernisation Plan: a blueprint for the transition of the railways that would not only introduce diesellisation and electrification in a structured manner but also introduce automatic signalling, continuous braking for wagons, a number of new mechanised marshalling yards to handle freight by the wagonload and a programme of renewals and upgrades to lift the railways out of their post-war malaise.

For railcars, this was a big moment, as the plan anticipated the construction of a staggering 31,000 new passenger carriages, of which 4,600 would be for railcars. The whole plan was optimistic and foresaw a railway network with improved finances and the capability to service a growing economy. No mention was made of closures or service withdrawals and the outlook was rosy.

For Wirksworth, the variety of multiple units on



test was great and in the next half-decade, the railcars that serviced Silloth took on many forms and spread across the nation. By the mid-1960s steam haulage for local trains had been virtually eliminated while express services saw a similar move from steam to diesel and electric haulage.

Beeching

Despite this optimism, the Modernisation Plan had not been the panacea that had been hoped-for. The introduction of diesel locomotives had been traumatic with some successes but also some significant failures; steam and diesel do not mix and the railways found this out the hard way when trying to maintain both technologies side-by-side.

But the bigger picture was worse. The railways were hemorrhaging business to road and even air transport. By 1962, the railways were losing £104m per annum (equivalent to £4bn today) and drastic action was needed. A doctor was called and his name was Richard Beeching.

The Reshaping of British Railways was published in 1963 and its effects are well-known. The size of the whole network was reduced from 17,000 to 10,000 miles in just a few years, while depots were closed, whole networks eliminated and many jobs lost. The picture was not all bleak - management of the railways was shaken-up for ever and the eyes of an outsider to the railways meant that many obsolete practices were eliminated.

However, for the people of Silloth, Beeching was a disaster. The line was listed for closure and despite vigorous protests, the final - steam - train ran on 7th September 1964.

One irony was that the Labour Party, who campaigned vigorously

against the Beeching cuts in the 1964 election, came to power the next month and campaigners petitioned the new transport Secretary, Barbara Castle, to reverse the line's closure. However, through civil service chicanery, reopening was refused on the grounds that no legislation existed to reopen a line once closed.

Railcars without passengers

In addition to the wholesale closure programme, the modernisation of the railways continued, the most obvious example being the elimination of steam by the summer of 1968. However, British Rail (as it was then known) had been quietly withdrawing non-standard, numerically small and less successful classes of diesel and electric train.

Sadly, the Derby Lightweights were victims of this cull. Although successful and popular, they had been overtaken by newer designs and were non-standard. Their control systems were not wholly compatible with the newer units, while their aluminium bodies, though resistant to rust, had aluminium chassis that did not take kindly to being banged into other, stronger, carriages. The control systems could have been modified but there was no appetite to do so and thanks to the line closures there was a surplus of railcars so the older ones could be withdrawn.

By 1970, only three of the original Derby Lightweights remained but those that did were to lead a charmed life thanks to British Rail's boffins.

The first unit was one of a kind; although taken from the same production line, one unit had been despatched to Scotland to run exclusively under battery power on the Highland branch line to Ballater. Withdrawn in 1966, the one-off unit was claimed by the Railway Technical Centre for use with experiments in automatic train operation. Named 'Gemini', the unit worked for another 17 years before being sold for preservation. Today it can be seen back on its original line as part of the collection of the Royal Deeside Railway.

The second unit, also a bit of a one-off, was one of a pair of single coach units that had been diverted from the batch destined for Manchester and used between Bletchley and

Banbury. Once again, the line for which it was intended had closed and while one of the pair was scrapped, the other was again snapped-up by the Railway Technical Centre, named 'Iris' and used to develop radio systems to communicate directly with trains.

Finally, a two-car unit from the West Cumberland batch, and one that would have visited Silloth on many occasions, was rescued by British Rail's Chief Civil Engineer for use as an ultrasonic test train. Based far from home in Reading, the unit was heavily-modified with much scientific equipment fitted, including an extra bogie containing the test equipment, and even windows put into the floors to allow scientists to see their equipment in operation.

This ultrasonic test train was a pioneer in its field. Capable of operating at only 20 mph, it contained a range of equipment connected to a special extra bogie under one of the cars. The collection of instruments collecting the data from the rail surface was filmed using a cine camera with an operator in



the driver's cab marking the train's position every quarter mile so the analysts back at headquarters could correlate the results with the location of any fault.

The Legacy

All three remaining Derby Lightweights were out of service by the late 1990s and what happened next brings us right up to date. However, these three pioneers were at the vanguard of a revolution in the technology of the railways. These three units pioneered automatic train control, a national wireless communications network and a hugely efficient regime of track testing where a fleet of modern trains patrol the national rail network doing the work of countless gangs of track workers who had only crude tools and their skill available to them.

Fortunately, all three units were recognised for what they were - historic examples from the pioneering days of modern trains. The battery railcar had a chequered life in preservation, but is now back home in Scotland, while Iris was purchased privately and restored to her original condition. In 2008 she moved

to Wirksworth and the Ecclesbourne Valley Railway and starred in the reopening of the line to Idridgehay soon after she arrived.

Today, not only does Iris run regularly between Wirksworth and Duffield, connecting with main line trains, but she is the 'poster girl' of the Ecclesbourne Valley Railway.

Fronting-up the 'Destination Wirksworth' campaign, Iris has become a cartoon character with her own Facebook page and Twitter feed (@IrisTheRailcar)!

But what of Silloth's Railcar? Like Iris, she was purchased into preservation and is now the property of the Derby Lightweight Preservation Group. In the early 2000s, Heritage Lottery funding paid for one of the carriages of the two-car unit to be restored and in 2004 the partially-restored unit was presented to an impressed audience at a special gala held at the Severn Valley Railway to celebrate 50 years of railcars.

Sadly, funding issues meant that restoration of the second vehicle took much

longer than anticipated and for several years the whole unit languished at the Midland Railway Centre near Derby. But in late 2014, the whole railcar was moved to accompany Iris at the Ecclesbourne Valley Railway, Wirksworth, which by then had established for itself a reputation for restoring railcars to a very high standard.

So today, a little bit of Silloth resides in Wirksworth. The branch line where every Derby Lightweight unit was tested came through its own period of disuse in the 1990's to be restored over several years in the early 2000's and, in 2011, was opened fully, connecting with main line services at the line's southern terminus at Duffield. Restoration of Silloth's railcar is scheduled to commence in 2016 and there is the enticing prospect of two Derby Lightweights running from Wirksworth to Duffield in just a few years.

If you live in an around Silloth and you are visiting Derbyshire, try and come to Wirksworth Station and look out for your railcar. It is going to be named Solway.



Davis Cup Victory for George & Tomas



As a precursor to our glorious and historic Davis Cup victory in Ghent, Silloth Tennis Club held their very own fun Davis Cup event using the LTAS free competition pack. With children from the local primary and secondary schools (as well as parents) invited as a free taster session Coach Rob Jefferson organised everyone into doubles teams within the usual coaching session. (See picture) 7 year old member Tomas Smart and 12 year old George Carr took the title, representing TEAM GB of course!

Silloth Seagulls

Report by: Mr C Gull

November has proved to be a frustrating month for Silloth due to a combination of bad weather and opponents turning up with only 6 players which meant that the Seagulls only managed to complete two fixtures in the period. Both were cup matches against local rivals Wigton Harriers and both were extremely hard fought contests but unfortunately Silloth lost out by the odd goal on each occasion.

First up was the Whitehaven Cup with the Seagulls looking to make home advantage count in their first local derby of the season. It proved to be a day of frustration for Silloth though as they lost 2-1 after extra time. The lads just couldn't get anything going in the final third of the pitch despite playing against 10 men for more than an hour and having the lion's share of possession. It wasn't for the want of trying though and you can't fault any of the Gulls for the effort they put in, so to concede very late in extra time was a body blow. Andrew Trestianu scored Silloth's solitary goal and Dan Foster was man of the match.

A chance for revenge came just two weeks later with a trip to Wigton in the County Cup but The Seagulls came up short for the second time losing 3-2 in another very tight game. This was the quintessential cup tie, an end to end affair with plenty of goalmouth action. Twice Silloth scored to level the match and twice conceded shortly afterwards. A deeply frustrating game was made even more so by having a late penalty claim for handball waved away by the referee even though his assistant flagged for it! All the players

Abbeytown Girls Football



Report & Photo by: Haley Mossop

Abbeytown Under 12's Girl's Football Team are unbeaten so far this season. They have proved a formidable force over recent weeks. The team are currently riding high in the local League and in the semi-final of the County Cup.

Abbeytown Indoor Bowls

Report by: Gladys Temple

Blencogo were the visitors for the first match of the Winter Season in Abbeytown Village Hall. Michael Faulkner welcomed everyone and explained

were outstanding once again and it is shame they did not get the positive result their efforts deserved. Goalscorers were Adam Carr and man of the match Ryan Hanley.

The Seagulls will look to get back to winning ways in December to consolidate their position at the summit of the Cumberland County League Division One table and set themselves up for an even more successful 2016. Player of the month for October was Adam Carr thanks to string of excellent performances and a hat-full of goals. In November the accolade went to Ryan Hanley whose work rate and range of passing was second to none.

there would be 5 ends of each game with 2 games on each mat before supper and 2 after. At half time the score was 18 to Blencogo and 18 to Abbeytown. A lovely buffet Supper was served and the winners of the Grand National Game were Vera Watkins, Sheila Nichol, Mary and Harry Douglas for Blencogo with Colin Scattergood and Norman Dainton for Abbeytown. The final score was Blencogo 31 and Abbeytown 42. Abbeytown were thanked for a very friendly evening and invited to Blencogo later in the season.

Abbeytown Indoor Bowling Club were the visitors to Bolton Low

Houses and were welcomed by John Chester. 5 ends were played in each game and by half time the home team were leading 31 to 12. A lovely supper was served and the winners of the plants game were Norman Dainton, John Hill, Joyce Wilson and Alan Litt for Abbeytown with Sarah Ashburner and Elizabeth Sewell for Bolton Low Houses. The second half was more wins to Bolton Low Houses and the final score was Bolton 66 and Abbeytown 22. Michael Faulkner thanked Bolton members for a lovely supper but said it was the worst score we had ever had and we look forward to being hosts at Abbeytown soon.

JayBee's

Frozen Fishing Bait, Hooks & Weights

2 It Milk £1.30 or 2 for £2.00

Everything For Christmas

Wrapping Paper, Ribbons & Bows, Cards, Baubles, Decorations, Trees, Fairy Lights, Gifts

open 7 days a week

6 Criffel Street, Silloth, Tel: 016973 31245

The Queens Bed & Breakfast

Full en-suite rooms ~ Sea Views

Call: 016973 31373, Mob: 07753 859403
email: moregain@tiscali.co.uk
The Queens, 1 Park Terrace, Silloth



STANWIX PARK
SILLOTH ON SOLWAY
WINTER DAY PASSES
(3rd Jan - 12th Feb)
Adult - £4.00
Child: £3.00
Under 5's go FREE!

MONTHLY LEISURE MEMBERSHIPS

December - February
Adult (16-60yrs) - £20 per month
Couple - £32 per month
Child (5-15yrs) - £11 per month
Senior (60yrs+) - £15 per month

016973 32666 | www.stanwix.com
Stanwix Park Holiday Centre, Silloth, Cumbria, CA7 4HH.



STAFF VACANCIES

We are currently looking for well presented, enthusiastic individuals to work in our busy complex. We have some Casual, Part-Time Vacancies in our BAR FACILITIES most suited to students or anyone looking for a secondary income.

Applicants must be over 18 yrs, possess good communication skills and have a very flexible approach to working hours; shifts will include evenings, weekends, school and bank holidays throughout the year.

Application Forms Available From Reception. Return Marked for the Attention of CLAIRE AUSTIN.



GREAT VALUE FOR THE WHOLE FAMILY!

Relaxation, fun & excitement in one place, all you need to make your day out one to remember. Heated swimming pool, gym, Jacuzzi, sauna, steam room, ten pin bowling, wifi, Sky Sports & BT Sport.

BT Sport sky SPORTS

WINTERS

POST OFFICE

Personal Banking
Cash Withdrawals
Yankee Candles
Greetings Cards

Eden Street,
Silloth-on-Solway
Shop: 016973 31323
PO: 016973 32957

British Champion for the 14th Time! Well Done Alan...

Report by:
The Rubber Burner



Silloth has a unique multiple champion motorcycle racer in the form of Alan Tinnion.

Alan has achieved no less than fourteen British Sprint Championships, twelve of which were consecutive wins, not to mention numerous other championships.

The way Sprinting works is a standing start measured distance mainly a

between modern and vintage bikes.

On talking to Alan it strikes me that he is a very laid back and unassuming guy, Alan really does appreciate all the people who have sponsored and helped him in his pursuit to win. In his own words "I don't come to be second".

The 2014 season has seen Alan take no fewer than six

class records even though racing a 600cc bike in a 750cc class. One of which was at his home track at Kirkbride where he ran the Carlisle based J&L Motorcycles Yamaha 600cc to a 9.99 seconds over 1/4 mile speed of 137mph, he was well chuffed with this being one of the last meetings of the season and a new record.

Alan is going to contest the 2016 championship season if enough sponsorship is obtained, new sponsors are always welcome. In his own words "every little helps, even if it's only a few revs".

As a writer and spectator to the sport I have the greatest admiration for Alan and his partner Susan for the amount of travelling they do up and down the country and their dedication to the sport of motorcycling. Silloth should be as proud and privileged to know him as I am.



1/4 of a mile or an 1/8 of a mile, mainly straight and level but some are twisted and hilly, the aim is to cover the distance as fast as possible.

There are 34 classes in sprinting and sub divided by cubic capacity and year, the riders in each of the classes are all competing against each other but the one with the most points will become British champion. So, not only are you competing against people in your own class, you are competing against all the classes, large or small, old or new.

Alan has competed at the top level of the sport for 28 years, all on small capacity bikes (nothing over 600cc), either 2strokes or 4strokes. His riding style has let him race in both 2 and 4strokes at the same meetings, even in the vintage classes and modern. To a motorcyclist this will be appreciated, knowing the difference



New Silloth Golf Professional

Silloth on Solway Golf Club is proud to announce we have a new addition to our teaching staff.

Bev New is a former English ladies champion, Curtis Cup player and ladies European Tour player who has recently moved to Silloth.

Bev will concentrate on junior coaching and promoting the 'get into golf programme' to encourage more juniors and new starters into golf at Silloth.

Bev joins our head professional Jonathan Graham in providing tuition at the club so if you're a new starter, keen junior, established player or scratch golfer Silloth Golf Club is the place to go for golf tuition.

Bev will be running junior coaching starting Saturday 21st November at 10am. These sessions will be £5 per child and need to be pre booked, each group will be a maximum of 4 per session so each child will get very concentrated coaching. These sessions will run through the winter, weather permitting, so your children will get the opportunity to have tuition all year round.

Bev will also be running get into golf sessions, if you're interested in playing golf or have always wanted to start playing then these sessions are perfect for this. Silloth is a great links golf course and is challenging but the club has installed two new sets of tees in recent years to enable people who are starting the game whether they be juniors or adults to play from forward tees to help them enjoy the course more. The lessons with Bev will be an



ideal way to have a go and see if you like the game. The sessions will be £5 per person and again will need to be pre booked. These sessions will give all new starters the perfect platform to learn the

game and hopefully enjoy the game for many years.

For more information on all lessons at Silloth or to book either the junior or get into golf sessions contact 016973 32404.

Tanglewood Caravan Park
Silloth-on-Solway
016973 31253

Bar on site
Tourers Welcome
Hire Vans & Seasonal Pitches

Tanglewood is a pet friendly family run park ideal for relaxing laid back holidays

www.tanglewoodcaravanpark.co.uk

EST **Nº 17** 2015
DELICIOUS

Baguettes
Panini's
Breakfasts
Wraps
Coffee

17 Eden Street
Silloth, CA7 4AD
016973 32458

ANIMAL & POULTRY FEED
(farm deliveries)
(hay & straw available)

CALOR GAS AGENTS
(discounted prices)
(free local delivery & connection)

PREMIER CONVENIENCE STORE
open 6am-8pm Mon-Sat, 7am-7pm Sunday

Harrisons Store Ltd, Abbeytown
Tel/Fax: 016973 61231, M: 07972 805074

MARKLEY
IT CONSULTANCY & SECURE STORAGE

STORAGE
CCTV
Secured Storage
Containerised Storage
Business Outlets

MARKLEY.co.uk
Tel: 07720 560 595

W Wheyrigg Hall
BAR / HOTEL / GRILL

Real Food & Good Ale
served 7 days a week

Friday Night
Steak Deal
Rump, Fillet or Sirloin:
£10.10

Recommended by
 tripadvisor

WHEYRIGG, ABBEYTOWN, WIGTON, CA7 0DH
TELEPHONE: 016973 61242