



Godzilla Bee!  
by Riley Johnstone from Silloth Primary School

# Solway Buzz

[www.solwaybuzz.co.uk](http://www.solwaybuzz.co.uk)

May 2022

local news - for you - by you - about you - free to you

**FREE PAPER**

Issue 198

## Events Are Back!

**2nd May**  
**Spring into Silloth**

**2nd to 6th June**  
**Queen's Platinum  
Jubilee Celebrations**

**18th & 19th June**  
**Silloth Pride**

**23rd July**  
**Silloth Cycling Festival**

**30th July**  
**Soul on the Green**

**27th to 29th August**  
**Silloth Carnival**

**8th to 11th September**  
**Silloth Music  
& Beer Festival**

## Silloth Supports Ukraine!



See the story on page 5

Page 3  
Commonwealth Day



Page 7  
Margaret knows Corn Dollies



Page 6  
Queen's Green Canopy



Pages 8  
Silloth's Class of '77



Page 9  
RNLI Fundraiser



Page 10  
Michael knows the Ghurkas



## David Allen

Carlisle | Dalston | Dumfries | Penrith | Workington

• Accountancy  
• IT Solutions

• Tax Consultancy  
• Debt Recovery

• Financial Services  
• Payroll

• Agricultural Services

01228 711888 • [www.david-allen.co.uk](http://www.david-allen.co.uk)



The Solway Buzz is a FREE community paper with a circulation of up to 5,500 copies for the area around Abbeytown, Skinburness, Silloth-on-Solway and Mawbray



## Free Guided Walks on the Shore

They're back! Free low-tide guided walks on the shore at Dubmill Point, Allonby Bay, to look at the animals and algae that live in and on the shore and rocks – including the very special honeycomb-worm reefs, for which Allonby Bay is a Marine Conservation Zone.

As David Attenborough says, "No one will protect what they don't care about; and no one will care about what they have never experienced." So do join Dr Ann Lackie (writer Ann Lingard) to experience the wonders of our shores.

All details – dates, times, where to meet, what to wear etc are on the website for Ann's book about the Solway, *The Fresh and the Salt*. The Story of the Solway: see <https://thefreshandthesalt.co.uk/shore-walks-events/>

Walks are about two hours long, dogs and children are most welcome, but booking is essential as places are limited: please use the contact form <https://thefreshandthesalt.co.uk/contact/> to book your place.

A short blog-post about 'Strange animals of the Solway shore' is on Ann's Solway Shore-walker blog <https://solwayshorewalker.co.uk/2022/01/24/strange-animals-of-the-solway-shore/> if you want to find out more about honeycomb worms.



## If You Don't Need It, Don't Keep It!



Return unwanted aids  
to your nearest HWRC



The county council's Community Equipment Service is appealing for people to return equipment such as commodes, toilet frames, bed levers, over-the-bed tables and shower chairs. This is due to supply issues related to the Coronavirus pandemic and Brexit leaving some people struggling to access the equipment they need.

Cumbria County Council's Community Equipment Service provides free equipment across Cumbria to support people with their mobility and to help with normal daily tasks. This helps people stay independent in their own homes, and the service desperately needs returns of equipment no longer in use.

You may have forgotten about no longer needed equipment, or not know what to do with it, either way you can free up some space by returning the equipment easily and conveniently through local Household Waste and Recycling Centres (HWRCs). The Community Equipment Service will then collect the equipment, professionally clean and service it ready for reuse by others in need.

Kate Vernon, Service Manager for the Community Equipment Service said: "People across the country are facing shortages of the essential equipment they need to stay as active and independent as possible. By creating an easy way

for people to return equipment that is no longer needed such as commodes, shower stools and over-bed tables, in a good, clean condition to HWRCs we will be able to help many more people continue to live in their own homes."

You can find your nearest HWRC at [cumbria.gov.uk/recycling](http://cumbria.gov.uk/recycling)

Walking aids should still be returned to Wigton Community Hospital. Otherwise West Cumberland Hospital and the Cumberland Infirmary will have meet and greet volunteers at the entrance who will collect equipment handed in.

We are appealing to patients to return crutches, walking sticks and zimmer frames – after a large drop in numbers of returns over the course of the coronavirus pandemic.

Maybe you've found some lying around that you'd forgotten all about, or maybe you just never got round to bringing them back yet, either way it's time to free up the space they've been using.

The Trust asks patients given crutches, walking sticks or zimmer frames to bring them back once no longer needed. They'll be professionally cleaned and reused. A significant number haven't been returned.



Sugar Crush Bee  
by Alexander Ridgway  
from Silloth Primary School



Violet the Unicorn Bee  
by Zdyah Winter Burns  
from Silloth Primary School

### SILLOTH CAFE

Traditional Fish & Chips to Takeaway  
Special Wheat Intolerance Gluten Free Option

Monday–Saturday 12am–8pm  
Sunday 12am to 7:30pm

Pensioners Meal Deal:  
Monday – Friday

Station Road, Silloth, Tel: 016973 31319

**Devonshire House**  
Denture Solutions Ltd



New Dentures Direct | FREE Consultations  
Economical to Premium Range Dentures  
All work carried out by the Clinical Dental  
Technician in the Denture Clinic

**Tel 01228 529128**

Devonshire House Denture Solutions, 51 Spencer Street, Carlisle, CA1 1BB  
[www.devonshirehouselab.co.uk](http://www.devonshirehouselab.co.uk)

EST **Nº 17** 2015  
DELICIOUS

Baguettes  
Panini's  
Breakfasts  
Wraps & Coffees

17 Eden Street  
Silloth, CA7 4AD  
016973 32458





**If you walk past the Abbey which gives the village of Abbeytown its name between 6pm and 7pm on a Tuesday evening and you listen carefully, you may hear a choir singing.**

Open the big oak entrance door and you will realise it is not the ghosts of past Benedictine monks practising their Gregorian chant. Open the inner door leading into the body of the church and you will see and hear the dulcet tones of the recently formed Abbeytown Community Choir enjoying the music of the Carpenters, Les Misérables, the Beach Boys, tunes from Oliver and other well known, and not so well-known lyrics.

This choir is under the tuition and guidance of Michelle Dodds who has lived in Abbeytown for a number of years. Music is her passion and she would like to offer the benefits of music to others. Michelle herself is an accomplished musician on most brass instruments.

Many, many people have praised her singing voice which can be heard as part of the duet "Cultram" along with local musician Geoff Betsworth. The choir is accompanied by our wonderful, talented Pianist Carolyn Fyfe who also lives in the village.

The benefits of music and being part of a choir are numerous. The breathing exercises and actual singing itself greatly benefit those with respiratory problems including asthma and COPD. Being part of a group is also beneficial to a person's mental health, self confidence and self-esteem. It increases the endorphins in your body and greatly lifts your mood.

There are many in the group who have never sung in a choir and never sung in public before, so do not be afraid about coming forward.

If you have nothing much to do on a Tuesday evening or if you just want to challenge yourself, please come and join Michelle and the other members of the choir as they prepare for their first public performance at The John Peel Community Theatre, Wigton, on Friday June 10th.

The object of the group is to HAVE FUN. We hope you will join us.

Tickets for the performance can be bought via Ticketsource  
Adult Choir –  
Tuesday's 6 to 7pm  
Children's choir –  
Wednesday 4:30 to 5:30pm in  
Holme Cultram Abbey.  
Follow us on facebook!

# Commonwealth Day 2022



Report by: Wendy Jameson

On Monday 14th March 2022, Silloth-on-Solway took part in the Commonwealth Day celebration, with the raising of the Commonwealth Flag in the Community Garden on Silloth Green.

Commonwealth Day was commemorated by 54 countries across the world, honouring their shared values and rich diversity as members of the Commonwealth.

Every year, people in Commonwealth countries in Africa, Asia, the Caribbean and Americas, the Pacific and Europe observe the day with a range of activities, including faith and civic gatherings, flag raising ceremonies and cultural events.

This year's celebrations, held under the theme 'Delivering a Common Future', will be historic, marking 70 years of the reign of Queen Elizabeth II and her role as Head of the Commonwealth.

At 9:45am, Cllr. Graham Wilkinson, Deputy Mayor of Silloth welcomed everyone to the Flag Raising Ceremony. The ceremony was well attended, with representatives from Solway Community School, Silloth Primary School and other groups and organisations in the town. It was a pleasant, if breezy Spring morning, interspersed with outbreaks of sunshine.

Despite issues with the PA system, Cllr. Wilkinson read out an extract from the annual message from, Commonwealth Secretary-General, the Rt Hon Patricia Scotland in which she underlined the significance of Commonwealth solidarity during this time of global uncertainty: "In an uncertain world, with multilateralism under strain, the Commonwealth shines as a beacon of hope and promise,

inspiring confidence in the benefits of international co-operation and collective action. We celebrate the diversity that enriches us, and the similarities that enable us to work together. Our points of unity make the Commonwealth unique in our world. Drawing from the deep wells of our unique history, they enable us to face the challenges of the 21st Century with clarity, unity and purpose."

The Secretary-General called for all Commonwealth nations to "stand together" in the face of multiple global crises, including the COVID-19 pandemic, which has claimed nearly one million lives in the Commonwealth, climate change and ongoing insecurity.

Four year 7 pupils from Solway Community School went on to read out the Commonwealth Affirmation. This common act of witness renews the commitment



Deputy Mayor Graham Wilkinson

of people in Commonwealth countries to work together inclusively and in a spirit of goodwill towards democracy and development in which all can share.

At 10am, Cllr. Wilkinson, raised the Commonwealth Flag, this being the eighth year that Silloth has taken part in the celebration.

Thank you to everyone for attending the ceremony.



Solway Community School pupils read the Commonwealth Affirmation



Granpa Bee  
by Ollie Taylor  
from Holme St Cuthbert School



# Local Police Activity

## SILLOTH

PCSO Kerry Harris has conducted regular patrols in Silloth during the past month.

On 18th February, Kerry provided crime prevention advice to a local resident who had asked for a home visit. If you feel you would benefit from a similar visit please contact your local PCSO, they can arrange to pay you a visit at your home address.

As part of her role, Kerry works closely with a number of partner agencies including Cumbria Fire & Rescue Service. Last month, Kerry took part in a follow-up visit with fire service colleagues who provided the resident with a fire retardant bedding pack.

Kerry attended a community engagement event on 18th February at The Links in Silloth



PCSO Kerry Harris

as part of her regular drop-in sessions. This provides residents an opportunity to let Kerry know about any concerns they have.

## ABBEYTOWN

PCSO Kerry Harris and PC Dawn Lowerson attended an address in Abbeystown to carry out a welfare check on a resident who had been victim of anti-social behaviour.

Kerry and Dawn spent time with the resident to understand the impact of her experience of anti-social behaviour and provided advice on how to report any future incidents or concerns.

Patrol activity will continue in the area to prevent further incidents.

If you are suffering anti-social behaviour in this location please report this online, via 101 or anonymously to independent charity Crimestoppers on 0800 555 111.

# Forgot Something? Don't Let It Be Your Password

**23 million users used 123456 as a password!**

Whether it's your Facebook, Amazon, or Netflix account, the explosion in popularity of online apps and services means more and more of us have to remember an increasingly long list of passwords.

Unfortunately, some of us cope with this challenge by resorting to practices that leave our data, devices and money at risk - by using the same password across multiple accounts, or by creating simple passwords that could easily be guessed by hackers. Bad password practice is more prevalent than you might think - the UK's National Cyber Security Centre carried out analysis of passwords leaked in data breaches and found that more than 23 million users worldwide used 123456 as a password.

Here are some top tips that will make your life easier and your online accounts more secure:

### 1: Creating memorable passwords.

A good way to create strong, memorable passwords is by using three random words. But remember, don't use words that can be guessed (like your pet's name). You can include numbers and symbols if you need to. For

example, "RedPantsTree4!"

### 2: Saving passwords in your browser.

Saving your password in your browser means letting your web browser (such as Chrome, Safari or Edge) remember your password

**ActionFraud**  
National Fraud & Cyber Crime Reporting Centre  
**0300 123 2040**

for you.

This can help to make sure you do not lose or forget your passwords and protect you against some cyber crime, such as fake websites

It is safer than using weak passwords, or using the same password in more than one place.

### 3: Email account passwords

If a hacker gets into your email account, they could: reset your other online account passwords, access personal information you have saved about yourself or your business

Your email password should be strong and different to all your other passwords. This will make it harder to crack or guess.

For more of the government's latest advice on how to stay secure online, visit the Cyber Aware website: <https://www.ncsc.gov.uk/cyberaware>

## E-SCOOTERS

We are urging people to fully understand the law before buying or riding an e-scooter.

We stopped a child on Mealpot Road who was on an e-scooter, and contacted their parents who attended and the e-scooter was seized. Advice was given on the laws. One adult made off from police on High Street on an e-scooter, it was abandoned on the street and seized.

E-scooters are illegal to use on roads, footpaths, cycle tracks/lanes, bridleways, or byways. The only legal place these privately purchased scooters can be ridden are on private land with the owner's consent.

E-scooters also are potentially dangerous to riders and other member of the public with some reaching speeds of more than 30mph.

E-scooters are classed as a powered transporter and come under the same legislation as motor vehicles, therefore you need a licence and insurance to ride them. They also need to be registered to be used on the road and are subject to technical standards such as MOT and vehicle tax.



Rainbow Space Bee  
by  
Imogen Brough  
from  
Silloth Primary School



Bob the Rich Bee  
by  
Robbie Tiffin  
from  
Holm Cultram  
Abbey School

## Wheyrigg Hall Hotel

*Real Food & Good Ale 7 days a week*

**Friday Night**  
from 6pm  
**Steak Deal**  
from £10.60

Tel: 016973 61242

WHEYRIGG, ABBEYTOWN, WIGTON, CA7 0DH

*Traditional*  
**Sunday Lunch**

Food served  
12-2pm. 5-8:30pm Mon-Thu  
Noon-8:30pm Friday-Sunday

## GOOD COMPANIONS RESIDENTIAL CARE HOME

Long & short term stays in single en-suite rooms  
Day Care £25 per person ~ limited spaces available weekdays  
Free transport provided locally  
Local Meals on Wheels

Criffel Street,  
Silloth

Tel:  
016973  
31553



[www.goodcompanions.net](http://www.goodcompanions.net)

## Cushions & Covers

**Upholstery, Blinds, Curtains, etc.**

Whatever your  
furnishing needs, ring  
Irene on 016973 31836  
or 07902 805196, Email:  
[armstrongi@btinternet.com](mailto:armstrongi@btinternet.com)



## Skinburness Residents Association Shut Down

Report by: Grahame Littleton  
SRA Chairman

As the Skinburness Residents Association has been moribund for several years, the last committee members got together and decided to wind up the group and dispose of the assets.

There was a total of £2,563.16 in the bank account, it was decided

to donate £1,281.58 to Silloth First Responders and also £1,281.58 to the Great North Air Ambulance. The bank account has now been closed.

The group also had a small marquee and this has been accepted by Silloth Rotary Club for use locally.



Stripey Bee  
by  
George Swash  
from  
Holm Cultram  
Abbey School



Shaun Bee  
by Connor Riddick  
from Holm Cultram Abbey School

## Silloth Supports Ukraine!



Report by: Owen Martin

After seeing the horrendous invasion of Ukraine, which has subsequently triggered a huge humanitarian crisis, Christine Ray could not stand back and do nothing. She immediately advertised to start a collection of goods in Silloth and as usual the people of Silloth did an amazing job and rallied round.

The Youth Club was opened as a collection point at specific times and Well Pharmacy was also a collection point to allow people to drop off goods. Donations starting pouring in from across the town, with items such as first aid equipment, blankets, food, toiletries, baby food and much more. Donations were made by the local community, Silloth First Responders, Jaybees, Solway Community School and many more.

Christine said "I couldn't stand back and do nothing, I had seen other areas arranging collections so decided to do one in



Silloth. It's absolutely heartbreaking to see what's going on in Ukraine, we all must help in anyway we can. I would like to thank everyone who has donated, I'm overwhelmed by the generosity of the people in town.

If anyone would like to support Ukraine by donating to the Ukraine Humanitarian Appeal. You'll help DEC charities provide food, water, shelter and healthcare to refugees and displaced families.

Go to: [donation.dec.org.uk/ukraine-humanitarian-appeal](https://donation.dec.org.uk/ukraine-humanitarian-appeal)  
Or, please call 0370 60 60 90.

### SILLOTH MARKET

IS BACK FOR 2022  
EVERY THURSDAY  
BETWEEN EASTER  
TO OCTOBER  
FIND US AT  
SILLOTH GREEN



Fancy joining us as a trader? Then  
contact the market manager, Phil Byers  
by email on [phil.byers@allerdale.gov.uk](mailto:phil.byers@allerdale.gov.uk)  
tel: 07753 934 540

We're Allerdale







Report by: Wendy Jameson

The Queen's Green Canopy (QGC) is a unique tree planting initiative created to mark Her Majesty's Platinum Jubilee in 2022 which invites people from across the United Kingdom to "Plant a Tree for the Jubilee".

Everyone from individuals to Scout and Girlguiding groups, villages, cities, counties, schools and corporates are being encouraged to play their part to enhance our environment by planting trees.

Silloth are proud to be taking part in this initiative and the Town Council have agreed for the circular bed on Silloth Green, opposite Christ Church to be

replanted. The bed is to be cleared of any old shrubs which have had their day, to create a new bed to mark Her Majesty's Platinum Jubilee. We will be working with the Friends of Silloth Green to plant a selection of new trees and shrubs. Our local Rainbows, Brownies and Guides are also getting involved, with each child planting a tree for the Jubilee.

Elsewhere on the Green, the original rose garden was built in 1954 to commemorate the coronation of Queen Elizabeth II. The garden is now planted with bee and butterfly friendly plants, to bring it into the 21st century and address pressing concerns over the welfare of our bees, butterflies

and other pollinating insects, while at the same time preserving the history of the site.



## New Online Fire Safety Check Tool

Cumbria Fire and Rescue Service are pleased to announce the launch of a new online home fire safety check tool, which is live on Cumbria Fire and Rescue Service's website: [www.cumbria.gov.uk/safetyathome](http://www.cumbria.gov.uk/safetyathome)

The site has been developed by the National Fire Chiefs Council, FireKills and SafeLincs and currently, Cumbria Fire and Rescue Service are one of seven Fire and Rescue Service's nationally who are using it. Thirty more Fire and Rescue Services are in the process of embedding it into their referral systems.

The online home fire safety check tool is an online form which allows anyone to risk assess their own situation to see if they are at risk from fire in the home. Once the form is complete, it either offers some bespoke fire safety advice or generates a referral for Cumbria Fire and Rescue Service to carry out a follow up visit.

The benefits of this system mean that we can focus our



resources on those who are at the highest risk and still offer education and advice to members of the community who are not deemed to be a high fire risk. The system can also be used by family, friends, carers and partner

organisations to assess someone else's risk level and generate a visit from fire service staff if they need one.

For those who are unable to access the web-based system, a freephone number is available to access a free home fire safety check: 0800 358 4777.

Fire Minister Lord Greenhalgh said: "I am delighted to support the National Fire Chiefs Council's new Online Home Fire Safety Check Tool. This will help people ensure their home is safe, providing them with life-saving fire safety information tailored to their home and household. I would encourage everyone to use this simple tool to help protect themselves and their loved ones against the risk of fire."

### ANIMAL & POULTRY FEED

(farm deliveries)  
(hay & straw available)



### CALOR GAS AGENTS

(discounted prices)  
(free local delivery & connection)



open 6am-8pm Mon-Sat, 7am-7pm Sunday

**Harrisons Store Ltd, Abbeytown**

Tel/Fax: 016973 61231 ~ M: 07972 805074

*Mrs Wilson's*  
OF SILLOTH



Coffee House • Eatery • Fully Licensed

**Open Daily 10am – 5pm**

All Day Breakfasts • Lunch • Light Bites  
Coffee • Cakes • Afternoon Tea

Take Away Afternoon Tea & Charcuterie Boxes

☎ 016973 31155 📱 Mrs Wilson's of Silloth

Located opposite the Green – Silloth, CA7 4BT

**STANWIX PARK**

*Are you awesome?*

**WE'RE LOOKING FOR YOU!**

FULL TIME, PART TIME & SEASONAL POSITIONS AVAILABLE.

Swimming Pool Attendant, Bar Operative, Leisure Centre  
Cleaner, Cafe Team Member & Welcome Host.

SEND US YOUR CV

[enquiries@stanwix.com](mailto:enquiries@stanwix.com)

Competitive rates of pay. Hours will include evenings, weekends  
& Bank Holidays.

For further information about any of the above vacancies please contact us.

E: [enquiries@stanwix.com](mailto:enquiries@stanwix.com) / T: 016973 32666 / [www.stanwix.com](http://www.stanwix.com)



## Looking After Pollinators



Photo credit: Charlotte Rankin

Planting for Pollinators - the exciting new Cumbria Local Nature Partnership project - has revealed some top tips to help get your gardens and outdoor spaces buzzing with life this Spring.

Planting for Pollinators project is a Cumbria Local Nature Partnership initiative delivered by Cumbria County Council, Cumbria Wildlife Trust, Cumbria Biodiversity Data Centre and local communities. The project aims to build on the work of the Get Cumbria Buzzing! project.

Outdoor spaces such as residential gardens, allotments and back yards cover an area larger than all of Britain's National Nature Reserves combined. Whatever the size of your garden, your outdoor space can provide a lifeline for pollinating insects - whether you have a doorstep, a small yard or lawn, there are lots of simple ways to provide food, shelter and a nesting habitat for insects all year round.

Pollinating insects rely on flowers for nectar and pollen, so when you're 'planting for pollinators' it's important to try to offer nectar and pollen throughout the seasons.

A good place to start is filling in any seasonal gaps in your outdoor space. Where possible, try to opt for native plants as they best support pollinating insects, but garden plants can also help extend the flowering season and add variety to any display.

Winter-flowering plants can be really important for queen bumblebees as they start to emerge in late winter. Allowing your lawn, or areas of your lawn, to flower can provide low-growing pollinator favourites such as dandelions,

daisies and white clover. If you don't have a grassy space, regular plant pots and baskets can offer a superb habitat when planted with nectar and pollen-rich plants.

Pollinating insects can also be supported by providing them with a home. Leaving some wilder areas can offer bumblebees a nesting habitat, while areas of shorter grass or open ground creates a suitable nesting habitat for mining bees. Areas of uncut grass, offering grasses, nettles and other native wildflowers, can provide food plants for butterflies and moth caterpillars - the birds will thank you too!

Leaving some vegetation uncut can also provide a home for an array of insects to spend the winter in anticipation for Spring. Avoid the use of pesticides and instead provide these wilder areas that will attract natural pest controllers, such as wasps and ladybirds.

Cllr Celia Tibble, Cumbria County Council's Cabinet Member for the Environment, said: "I am pleased to see this project progressing - these tips will help you to create a stimulating and sustainable environment in your garden for all sorts of wildlife - and as we look forward to Spring and the warmer weather, I am keen to attract a variety of new insects and wildlife to my own garden. My thanks to all involved in this fantastic partnership project."

Charlotte Rankin, Planting for Pollinators Conservation Officer at Cumbria Wildlife Trust, said: "Together, if we each do at least one thing for pollinators in our outdoor spaces, we can create habitat and offer corridors for insects across our urban areas and the wider landscape."



Jerry  
by  
Mason Nichol  
from  
Silloth  
Primary  
School

## Causewayhead WI



Report by: Jenny Stride

Causewayhead WI Meeting on 9th March.

At our March meeting Margaret came to us with a selection of corn dollies from all over the world.

The making of these stems back to ancient times when they were made to the gods to hope that a successful harvest would be achieved the following year.

In the UK these were made at the end of the harvest and each farm would have its own unique design twist.

Some of those Margaret had brought to show us were from places like Peru and Eastern Europe. They were very intricate and included human and animal figurines and Christmas decorations. There were also



Margaret last Corn Dolly maker in England with WI President Christine

intricate pictures made by the Chinese from rice straw which were incredible to see.

Margaret also did a short demonstration of how the "simple" ones were made which was very interesting.

The raffle was won by Jenny

Haywood and Valerie Lodge.

The Competition

1st Jenny Haywood

2nd Susan Kenny

Flower Competition

1st Christine Worrall

2nd Maureen Irving

Birthday Cards: Joyce Bailey.

## Cryptic Phrases #2 for LEXOPHILES (Lovers of Words)

Sent in by: Mike Faulkner

24. If you jump off a Paris bridge, you are in Seine.

25. When she saw her first strands of gray hair, she thought she'd dye.

26. Bakers trade bread recipes on a knead to know basis.

27. Santa's helpers are subordinate clauses.

28. Acupuncture: a jab well done.

29. Marathon runners with bad shoes suffer the agony of de feet.

30. The roundest knight at king Arthur's round table was Sir Cumference. He acquired his size from too much pi.

31. I thought I saw an eye doctor on an Alaskan island, but it turned out to be an optical Aleutian.

32. She was only a whisky maker, but he loved her still.

33. A rubber band pistol was confiscated from algebra class because it was a weapon of math disruption.

34. The butcher backed into the meat grinder and got a little behind in his work.

35. No matter how much you push the envelope, it'll still be stationery.

36. A dog gave birth to puppies near the road and was cited for littering.

37. Two silk worms had a race. They ended up in a tie.

38. A hole has been found in the nudist camp wall. The police are looking into it.

39. Atheism is a non-prophet organization.

40. Two hats were hanging on a hat rack in the hallway. One hat said to the other, 'You stay here, I'll go on a head.'

41. I wondered why the baseball kept getting bigger. Then it hit me.

42. A sign on the lawn at a drug rehab centre said: 'Keep off the Grass.'

43. A small boy swallowed some coins and was taken to a hospital. When his grandmother telephoned to ask how he was, a nurse said, 'No change yet.'

44. The soldier who survived mustard gas and pepper spray is now a seasoned veteran.

45. When cannibals ate a missionary, they got a taste of religion.



# Silloth's Class of 77 Have Their First Reunion!



Report by: David James

The class of 77 had our first School Reunion in 45 years on 5th March at Silloth Golf Club.

It was a wonderful night and despite it being such a long time apart it was very clear the bond between us was still there. Very soon into the evening we were all those 16 year old kids again,

laughing and joking about our days in Silloth Secondary School.

I consider myself very lucky to have grown up in such a wonderful place at a wonderful time with some wonderful people and I think a lot of people felt that way.

We look forward to Class of 77 the sequel in the near future.



Simon Addison, one of the Class of 77 presenting a donation from the School Reunion of Class of 77

Dear Solway Buzz,

I just wanted to reach out and let you know the difference The Solway Buzz is making to the health and well being of the local community, by sharing our Slimming World success stories. The monthly advert you produce is always great, giving the locals and visitors a chance to come along and visit our amazing group.

As a result of your fabulous support, We have been able to grow this amazing Slimming World group, giving us the ability to add another session on a Saturday. Groups are now 8:30am and 10am. This gives me great pleasure and allows me to help even more people.

This boost to the community is fabulous, because at Slimming World, we really do change lives with our flexible Food Optimising eating plan, that fits every lifestyle!

So I thought I'd just let you know how much I appreciate it and what a great support the Solway Buzz is.

Best wishes Loretta xox

## JayBee's

**6 Free Range Eggs £1 \* Bacon £1 a pack**  
**Pizzas from £1 \* 1kg bag Oven Chips £1**  
**Toys • Off-Licence • Hardware • Gifts**  
**Key Cutting • Carpet Cleaner Hire**  
**Watch Batteries & Straps Fitted**  
**Frozen Fishing Bait • Hooks & Weights**

**open 7 days a week**

6 Criffel Street, Silloth, Tel: 016973 31245

## KL EXPRESS Chinese Takeaway

**Open All Week**  
**4:30pm - 8:30pm**

A Wide Variety of  
Dishes for Every Taste

**Telephone Orders**  
**016973 33033**  
 43 Eden St, Silloth

## TECHNOLOGY PROBLEM?

**Mark Hansford**  
**Computer Services**  
**016974 38250**  
**07962 213527**

*Your local specialists*

**Internet, WiFi, E-mail  
or Printer?**

**Software Installation and  
configuration**

**TV, Mobile or Home Tech?**

**No Problem**

## Slimming WORLD

because you're amazing

**Meet Loretta on**  
**Saturdays in**  
**Silloth Rugby Club**  
**at 8:30am or 10am**  
**everyone welcome**

Contact: Loretta on  
**07766 118556**



## Visit to Silloth lifeboat by RNLI fundraiser

Report by:  
Julie Emary  
Silloth Lifeboat  
Press Officer

On the 4th April David Holdsworth, who is currently fundraising for the RNLI by visiting every RNLI lifeboat station in England and Scotland (he is planning to visit Ireland at a later date), visited Silloth this morning.

This was his 117th station and day 35 of his nine week tour. There are 182 stations on his itinerary and David is staying in his camper van and Bed and Breakfasts throughout the trip.

Several Silloth lifeboat crew members met David for coffee in

Bessies cafe in Winters, where he talked about his enjoyable visits to different lifeboat stations and how he had met some very interesting crew members, before going down to the lifeboat station.



## Return of Silloth Lifeboat



Report by: Julie Emary

Silloth's Atlantic 85 RNLI lifeboat, B828 Elaine and Don Wilkinson made a welcome return to the lifeboat station on 22nd March.

It has been away to the Isle of Wight Inshore Lifeboat Centre to

have some specialist maintenance and repairs carried out. The relief boat Vivacious Atlantic has been in Silloth since 27th January and proved to be an excellent replacement during this time.

The Atlantic 85 lifeboat is particularly suited to the Upper

Solway Firth area and the Elaine and Don Wilkinson has seen some dramatic service here over the years.

B921 Vivacious Atlantic will now have a temporary placement at St Bees further down the coast in Cumbria.

S.O.S.C.S.

### Silloth on Solway Community Shop

- \* Local people working for local causes \*
- \* All proceeds go back into the community \*
- \* Please continue donating \*

Open every day  
10am to 3:30pm  
Tel: 32452



S.O.S.C.S.  
12 Criffel Street  
Silloth

## West Silloth Motors

Motor Vehicle Body Repairs  
Diagnostics, Servicing & Recovery  
Aircan Service Now Available

Causewayhead, Silloth, CA7 4JG, Tel: **016973 32833**

Free Vehicle Collection & Delivery Service



**MOT TEST CENTRE**  
Cars, Vans & Motorhomes



## The Queens Bed & Breakfast

En-suite rooms  
Sea Views ~ WiFi

Call: **016973 31373**  
Mob: **07753 859403**

email:  
moregainus@gmail.com  
web:  
bedandbreakfast-silloth.co.uk

**1 Park Terrace**  
**Silloth, CA7 4DQ**

**Fairydust Emporium** Vintage Tearoom & Shop  
Eden St. Silloth  
Open 7 Days Tel: 016973 31787 or 07842 062118  
Rated Number 1 tripadvisor  
The home of the Biggest Hot Chocolate in Cumbria  
Silloth Fairydust Cabin Green  
A Gnome in One Putting Green  
The Silloth Fairy Trail & Wishing Tree  
search FairydustHQ

## Silloth & District Pensioners Association

Report by: Jean Day

It was a lovely sunny morning to come out and meet friends at the monthly Pensioner's Coffee Morning.

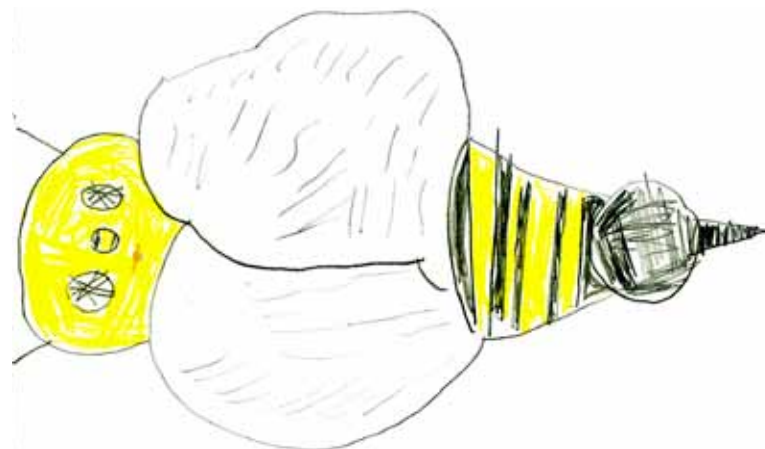
There were a few faces missing, but we are hoping most were taking advantage of third booster for Covid being given at Wigton, and not too many are poorly (Hope you get well quickly if the latter was the case).

The cake stall sold out quickly and the raffle was well supported, with big thanks to all those who so generously give prizes.

It was announced that we are having a coach trip to Skipton on Wednesday 22nd June; seats already being booked and they are a bargain at £10 for Silloth & District Pensioners, £12 for visitors and under 60's.

Winners of today's raffle were, Lillian Sewell, Sheila Nichol, Graham Horton, Edna Allison, Lorraine Hodgson, Jennifer Adam, Jean Graham and Freda Rumney.

The next Coffee Morning will be on Saturday 7th May.



Nice Bee  
by Jackson Hodgins  
from Silloth Primary School



Queen Bee  
by Juno Griffin from Holme St Cuthbert School



# Skating for the Ghurka's!



Michael Faulkner in November 1956 as a young soldier who served alongside the Ghurka's in Malaya

As an idea to celebrate his 85th Birthday on the 8th day of the 5th month of May. Michael Faulkner of Abbey Town has a plan to raise funds for the GURKHA WELFARE TRUST.

Having shared barracks with, and served alongside them in Malaya in 1956/7, he has always had great respect and admiration for them. So, now for something different and so long as All Goes Well he intends to head for Dumfries Ice Rink on his birthday and go for a target of 8.5 Kilometres or 8.5 Miles or more, bearing in mind that the Rink is only open for one and a half hours. So here's hoping.

The last time any serious skating was done, not counting the effort on the Stanks at Abbey Town in February 2021, was at Summerhill Ice Rink in Birmingham 1963/4. So it's "Fingers Crossed".

If anyone would like to "chip in" with a donation it would be greatly appreciated.

A JUST GIVING site is in operation now SKATING FOR THE GURKHA'S.



Practicing on the Stanks at Abbeytown, February 2021



Alice  
by Alice Watson  
from Holme St Cuthbert School



Sonny  
by Rosie Kerry Weldon  
from Silloth Primary School

# Eden Street Playing Field Wall is Looking Good!



Report by: Wendy Jameson

Some photos of the newly completed graffiti art wall at the Eden Street play area which has certainly brightened up the wall and the play area. A big shout out to the grounds maintenance team and volunteers from Friends of Silloth Green who did the preparation work, and to Beardsy Synergy and youngsters from Silloth Youth Club who did the artwork. A job well done!!

The project was funded with grant money from the Welcome Back Fund. The Welcome Back Fund is providing councils across England a share of £56 million from the European Regional Development Fund (ERDF) to support the safe return to high streets and help build back better from the pandemic. Also being funded is a new picnic area next to the park, new seating, picnic tables, bins, shrub beds, fencing and improved access to the play area.



**MAWBRAV VILLAGE HALL**

**HOW TO HIRE THE HALL**

Thinking about booking a venue for any family events, meetings, classes or exhibitions. Before you decide why not come and see our facilities there is no obligation. WE ARE SURE YOU WILL BE IMPRESSED. We have Super-Fast Broadband Wi-Fi, free to all hall users.

- The Main Hall (with stage) can accommodate up to 100 people where necessary.
- The Supper room (a smaller function room - is also available to hire without the main hall)
- A Fully Fitted Kitchen including 2 cookers, fridge, freezer, microwave, hot trolley, toaster, kettles, hot water urn, tea & coffee pots, crockery etc.

**PRICES**

Main Hall or Supper Room, both with Kitchen - £8 per hour  
Main Hall, Supper Room & Kitchen - £12 per hour  
Evening events (parties) - £75 (clear by 12 noon following day).  
Funerals - £75 all day.  
Weddings - £300 which includes the day before the wedding, the wedding day and until 12 noon on the day following.  
Children's party - £12 per hour.

Any additional time charged at £10 per hour.

For further enquires or to book the hall please contact  
Lynda Bailey on 01900 881 737, mobile 07926810674 or  
Email: info@mawbrayvillagehall.org.uk

**MAWBRAV VILLAGE HALL**

**Spring Plants and Craft Fair**

**Sunday 15th May 2022**  
**10am - 4pm**

Soaps, Textiles, Woodcrafts, Jewellery, Gifts, Produce, Linocuts, Watercolours, Cards, James, Chutneys, Cakes and Plants galore

The Tea Room is open for delicious home cooked light lunches, a selection of home baked cakes, teas and coffees.

**MAWBRAV VILLAGE HALL**

**MONTHLY QUIZ**

**Quiz**

The Monthly Quiz is back, on the  
**Thursday 26th May**  
**7.30pm**

£2.00 per person  
Prize for the winning team

Bring your own drinks, snacks and glasses.

??????????????

**Platinum Jubilee Tea**

**Abbeytown village Hall Committee are holding a celebration tea for the over 60's in our community on**

**Sunday 5th June 2pm**

**In Abbeytown Church.**

**This is free to everyone over 60 and living in Abbeytown Parish.**

To book call Carole 01697361798 mobile 07786387409  
Fiona 01697361105 mobile 0746858437

**THE QUEEN'S PLATINUM JUBILEE 2022**

**A Royal Celebration in Silloth**

THURSDAY 2ND & FRIDAY 3RD JUNE 12-6PM  
SILLOTH GREEN  
HELP US CELEBRATE HM QUEEN ELIZABETH'S PLATINUM JUBILEE

SILLOTH'S BIGGEST PICNIC  
LIVE ENTERTAINMENT  
FAIRGROUND  
STALLS & FOOD  
KIDS ENTERTAINMENT  
& MUCH MORE

**IN SILLOTH**

**MAMA MIA!**

**ABBA Themed Musical Evening**  
on Saturday 14th May 2022 at 7.00pm  
In CHRIST CHURCH Criffell Street, Silloth

Entry £ 8.00 a ticket including finger buffet, tea and coffee. Please bring your own wine or beer.

Tickets from the RNLI shop at the Lifeboat Station or Margaret on 016973 31502 at 154 Skinburness Road Silloth.  
Everyone welcome



# Your Buzzing Letters & Poems

Dear Buzz,

Silloth Youth Club would like to say a huge thank you to Hellrigg Wind Farm, Silloth Community Hub, SOSCS and the 41 Club for their kind donations over these last few months, it has been very much appreciated. We are taking the kids to Blackpool Pleasure Beach on Saturday 7th May and we are sure they will all have a fantastic time. We also purchased new equipment for the kids to play on, a new drinks fridge, freezer and laptop. We have been overwhelmed with generosity from yourselves and the community.

So a HUGE THANK YOU from the Youth Club Volunteers

Dear Buzz,

As a frequent visitor to Silloth now we are allowed to visit, I'm writing in praise of the volunteers that work in the 'Community Silloth' Charity Shop, on Criffel Street. They are always so pleasant and helpful, and always have a smile for everyone, no matter what age. It's always my first port of call each time I visit Silloth, and come home with wonderful bargains - so thank you ladies and gentlemen, you do a brilliant job! 'Carry on!'

Mrs J Hardingham

Spring Maze  
by Sophie Lodhi

Rousing in sunlight's soft embrace  
Bloom snowdrops in a dazzling daze  
Of whites, above which swallows race...  
A little later, crocuses  
Burst forth in a colourful blaze!  
Butterflies flit, dance, dip, dart, chase -  
White Admirals, Painted Ladies,  
And Pearl-bordered Fritillaries...  
While daffodils stand tall to grace  
Spring's rich, enchanted daytime maze.

Guided by the moon's bright, cool gaze  
Red foxes stir to wakefulness  
Running so free to play, hunt, race.  
Petals of wood anemones  
Close, as hedgehogs wake, stir to trace  
The paths that their nocturnal ways  
Will take them on their forages,  
Aided by stars and moonlit rays...  
While Ruby Tiger moth's wings blaze  
Darkly beneath Spring's midnight gaze.

A Poem For Peace  
by Pauline Mole

from her book available in Winter's and Allonby café

All over this world, for every colour and creed,  
The most sinful things in life, are Power, Hate and Greed.  
They cause unhappiness and bloodshed, and awful loss of life.  
They lead to war and conflict, to dreadful grief and strife.

All over this world, most people pray for PEACE.  
We ask for worldwide LOVE, and let the wars all cease.  
Unite mankind to realise, that to SHARE will be the VICTORY,  
When Power, Hate and Greed are gone, the world will all be Free.

All over this world, for all of the tomorrows,  
There is hope for future Happiness, and easing of all sorrows.  
Pray for all who suffer, in their war of bomb and gun,  
That they will be comforted, and know that LOVE has won.

All over this world, whether black, or yellow, or white,  
May the God you put YOUR faith in, be your guiding light.  
May He be the beacon showing you, to be Honest, Giving and Kind,  
So that you will feel true Happiness, with Joyful, Peaceful mind.

All over this world, GOODNESS, and MERCY must win,  
So that every colour, creed and age, will then know peace within.  
This is a poem for PEACE, and a dream for all to SHARE,  
It is a wish for everyone, to TRUST, AGREE, and to really CARE.

Do you have a poem or  
letter for the buzz?

We welcome all  
submissions, there is no  
charge.

Please remember to  
include your contact  
information.

## Bee Fact #3



To make one pound of  
honey, bees fly around  
90,000 miles that is  
equivalent to flying  
three times around the  
world!

Do you have a question or concern that you would like to speak to the Town Council about? We are holding a drop-in session and you will have an opportunity to speak to Councillors and the Town Clerk. Everyone is welcome.

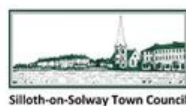
## Silloth Drop-in

At Silloth Community Hall,  
Petteril Street, Silloth

**Sat 23 April 2022**

**10.30—11.30 am**

For more details email: [townclerk@silloth-on-solway.co.uk](mailto:townclerk@silloth-on-solway.co.uk) or Tel: 0777 5686857



"Have  
your  
say"

Freedom

by Pauline Mole

from her book available in Winter's  
and Allonby café

Oh to be as free as a bird,  
Soaring above in the sky.  
They make it look easy flying  
around,  
And if I could, --- so would I.

Oh what must it really be like,  
To live a life as a cat?  
They come and go, and are cuddled  
and fed,  
And if I could, --- I'd like that.

I wish I was free and easy,  
Be footloose and fancy free.  
I'd have not a care in the whole  
wide world,  
And if I could, --- that'd be me.

To be free is something precious,  
Our freedom is something good.  
I'd love to give freedom to everyone,  
And if I could, --- then I would.

## Do You Get the Buzz?

If the Buzz paper  
does not fly through  
your letter box in the  
areas we cover, it is  
because we have not  
found a volunteer.

If you would like  
to join our hive of  
volunteers we would  
be pleased to hear  
from you,  
call Peter on  
**016973 32180**  
for more info.

## Masthead Bee Winner

Carlisle Embroidery are generously donating a Solway Buzz embroidered Kids Rucksack to the winner. This is in addition to the usual Winners Certificate and a £5 Gift Voucher from the Solway Buzz. So, come on kids, get drawing, the Buzz is always looking for more imaginative bees and yours might be the next winner. Local children return your drawing to your school or post to the address on page 14 (large stamp) and a quality Solway Buzz embroidered Rucksack from Carlisle Embroidery could be yours. You don't have to be at school here to send a bee to us. If you are here on holiday we would love to have your bee drawing.

This month the  
winner is Riley  
Johnstone from  
Silloth Primary  
School with a bee  
drawing called  
"Godzilla Bee!".

Well done!



## Non-Commercial Tourism Websites

[solwaybuzz.co.uk](http://solwaybuzz.co.uk)  
[sillothgreen.co.uk](http://sillothgreen.co.uk)  
[silloth-on-solway.co.uk](http://silloth-on-solway.co.uk)  
[sillothgolfclub.co.uk](http://sillothgolfclub.co.uk)  
[vintagerally.co.uk](http://vintagerally.co.uk)  
[sillothbeerfestival.co.uk](http://sillothbeerfestival.co.uk)  
[sillothmotorcyclemuseum.co.uk](http://sillothmotorcyclemuseum.co.uk)  
[silloth-on-solway-tc.gov.uk](http://silloth-on-solway-tc.gov.uk)  
[visitscumbria.com/wc/silloth](http://visitscumbria.com/wc/silloth)  
[soldiersinsilloth.co.uk](http://soldiersinsilloth.co.uk)  
[solwayplain.co.uk/silloth1.htm](http://solwayplain.co.uk/silloth1.htm)  
[facebook.com/sillothgreen](https://facebook.com/sillothgreen)  
[facebook.com/silloth-carnival](https://facebook.com/silloth-carnival)  
[facebook.com/groups/121042258051545](https://facebook.com/groups/121042258051545) (Silloth Today)



# A History of Silloth Published in the Cumberland News on 1st July 1885 part 2

Discovered by David Edwards in an old family scrap book and reproduced on the Silloth History Group facebook page

August, 1859, was regarded as being—as it indeed was—the most important in the history of the district, that being the date fixed for the opening of the dock, and the practical conclusion of the works. Although the weather was favourable till noon it then broke down and afterwards showers of rain were frequent. Early in the afternoon the train bearing those who were to participate in the opening festivities arrived. Among those who took part in the procession which marched along Criffel Street were the Mayor and Corporation of Carlisle, the chairman and directors of Silloth Dock, North British, and Border Counties Railway Company. The mace and sword were borne before the Mayor of Carlisle, and the members of a band of music did their best to dispel the effects of the pouring rain, by playing inspiring airs. The large numbers of umbrellas which had to be utilised made a striking contrast to the flags and banners which were flying. The directors, mayor, and corporation went to the west side of the dock and along the pier, where they embarked on board the steamer Silloth. As soon as the signal gun was fired the gates were opened and the Silloth steamed into the dock, followed by the Wasp and the Cumbria. The steamers having been moored in the centre of the dock, the Chairman, Sir James Graham, declared it open, and named it "The Marshall Dock." The dock is about 600 feet long by 300 feet wide. Its entrance gates were made of pitch pine, green heart, and memel, by Mr T. Nelson, who also had the contract for the whole of the dock. The entrance was 60 feet wide, and at high spring tides there were about 25 feet of water in the dock. The cost was about £70,000. Sir Wm. Armstrong's hydraulic machinery was put in at a cost of £13,000. The work done by these cranes was considered at the time to be wonderfully good, it being possible to load or unload seven vessels at a time.

## THE PIER.

The pier is a substantial wooden structure, of a design which is generally approved as combining lightness with strength. It runs out to sea for a distance of a thousand feet, and besides fulfilling the purpose for which it was built it makes a nice promenade, there being a width of 25 feet. The cost of the foundation, or sheet piling of the pier, was 1s 4½d per foot, and the upper part cost 8d per foot. The piles were driven to the depth of 20 feet. Mr John Tweedy, of Newcastle, the contractor, lost his life before the work was finished, and it was brought to a conclusion by Mrs Tweedy, who is still, we believe, a resident of Silloth. At the far end of the pier is a landing place for cattle, beneath the surface of the pier, and this arrangement serves for pleasure parties to embark and land at any time, the sea being nearly always up to the pier end.

## AN UNFORTUNATE ACCIDENT.

Out of evil comes good. This has proved to be the case at Silloth. On the 6th of April, 1879, what was then regarded as a great calamity occurred. There was at the time about 24 feet of water in the dock at about four o'clock, when the dock gates and piers fell in. As might have been expected the occurrence caused great

excitement in the town, and the rush of water was described by those who saw it as being something at once grand and terrific. There were over 20 vessels in the dock at the time of the accident, and these were imprisoned for nearly a fortnight, that period elapsing before the entrance could be cleared sufficiently to allow them to get out again. What made the accident the more remarkable was that neither the gates or walls had shown any signs of instability. The fact was that the sill had become undermined, and the water had worked insidiously at the foundations. As a consequence of the disaster the trade of the port was entirely stopped for a period, some of the vessels usually trading to Silloth meanwhile going to Maryport. It was not, however, till June that the steamboats could return and resume their usual course of sailings. The North British Railway Company took up the matter in the right sense, and at once dispelled the doubts and fears of the townspeople by considering the advisability of making a new and larger dock to the south of the Marshall Dock, and consequently further inland. Not only was this likely to prove the best course in the interests of the commerce of the district, but it would have the natural result of adding to the traffic in the company's own concern. Having this object in view they did not have the old gates re-erected, consequently the harbour was used as a tidal harbour only. As time passed on and there were no signs of a start being made, the Sillothians almost lost faith in the company, nearly three years elapsing before anything definite was decided upon.

## CONSTRUCTION OF THE NEW DOCK.—THE PROGRESS OF THE WORKS.

Considerable rejoicing took place among the inhabitants of Silloth when they read, about the middle of March, 1882, an advertisement issued by the North British Railway Company, announcing that the company were prepared to receive tenders for a new wet dock at Silloth. The commercial life of the little town was not so good as was desired, and one of our correspondents jocularly remarked that the prospect of a speedy commencement of the dock works had shortened the visages of many of the inhabitants of Silloth by at least an inch. The next intimation given to the public was in the beginning of May when it was stated that the directors of the railway company were willing to spend £100,000 upon the erection of the dock. It was at the same time announced that the contract had been let to the well known firm of Messrs Walter Scott and Company, dock and railway contractors, Newcastle. Additional interest attaches to this firm's contract, as Mr Walter Scott, the senior partner of the firm, is a native of Abbey Town. Mr Scott is a remarkable example of a self-made man, having risen from very humble circumstances to be one of the foremost contractors in the kingdom. They were about twenty other tenders sent in. Within a fortnight from the time we have mentioned, Mr Scott, jun., and Mr Middleton were hard at work in settling the preliminary arrangements for the beginning of operations. Contractors' plant arrived from Newcastle and other places in large quantities every day, and was at once got ready for use. Some difficulty was found in the making of new roads to convey traffic to the Marshall Dock without interfering with the operations either at the old dock or on the site of the new one. The large

sand hills on the west side were cut through and levelled, and rails laid down. On the east side a similar work was performed. Workshops were soon erected, and very quickly over a hundred men were at work, aided by a powerful locomotive engine.

While the preliminary preparations were going on, the authorities of the railway, the engineers, and contractors, held a conference respecting the practicability of increasing the size and altering the shape of the proposed new dock. It was agreed that the area should be increased by one and a quarter acres, the width being contracted and the length considerably increased. After the excavations were commenced, the rubbish taken out was pushed up in bogies by the locomotive to the deep hollows which lay between the large sand banks. A powerful steam "navy" was added to the plant, and this machine provided employment for two locomotives. Great progress was soon made on the west side with the excavations. A large pumping engine was erected so as to keep the water from interfering with the work. Preparations were then made for the erection of a huge coffer dam and long wooden piles were driven into the south-east corner of the old dock. The coffer dam, when completed, was of semi-circular shape, and was some sixty or seventy feet from the dock wall. A very large quantity of timber was used in the construction of this protection work, the heavy pieces of timber being knocked into the bed of the dock by a powerful pile driver. A second steam navy was started in the south east corner the earth excavated from this part being deposited on the beach, being used to fill up the large space which the previous year's storms washed away. In a short time about half-a-dozen locomotive engines were required to keep up with the work provided by the two steam navies. Each of these navies, it may be remarked, were estimated to do the work of at least 120 men, so that it will be readily imagined a great saving of expense—as well as the manual labour—accrued to the contractors. One of Prie's patent steam diggers, or dredgers, similar to the one used for dredging the mud out of the dock basin, was also pressed into service, being utilized for digging for the dock wall foundations. In the middle of March, 1883, the first length of concreting in connection with the wall on the west side of the dock was begun—exactly a year after the tenders were advertised for. During the succeeding two or three months very satisfactory progress was made with the operations. The 200 men employed getting through a considerable amount of work with the aid of the valuable plant used. Nearly 400 wagon loads of soil, clay, and sand were excavated each day and tipped upon the embankments. The foundations of the walls were also pushed rapidly on. When the long summer days came still more rapid progress was made, operations being carried on by the men from six o'clock in the morning till nearly nine o'clock at night. By the time the excavations on the west side foundations were completed those on the east side were started. It was found that at the depth required for the foundation the ground was remarkably hard, and therefore formed an excellent foundation whereon to build the dock walls. At one part of the excavations much trouble was caused by quick sand, from which a stream of water was continually running. By the aid of a powerful centrifugal pump engine,



## Copy Date



Please let us know  
of any changes  
within this section

Copy date for the  
June issue is:  
**1st week May**  
If you have an event  
to promote or you  
have something to say,  
please note the  
next copy date.

### Coast Bus Timetable

**60E Maryport to Skinburness**  
the current timetable is  
available from Silloth Tourist  
Office or Winters Newsagents  
or [www.ellenvalecoaches.co.uk/service-60e.html](http://www.ellenvalecoaches.co.uk/service-60e.html)

### Silloth RNLI Shop

Opens on Sat. 2nd April 2022  
for the Season.  
Shop Opening Times  
Sat. 11 - 4pm  
Sun. 10 - 4pm  
Mon. - Fri. 1 - 4pm  
Our shop is staffed by  
Volunteers and may not be  
open at the advertised time.  
We apologize  
for any inconvenience.

### Christ Church

For baptisms and other church  
related business please  
contact: Rev Bryan Rothwell  
The Vicarage, Wigton Road  
Tel: 016973 31413

### Civic Amenity Sites

Operated by Cumbria County  
Council. Tel: 01228 606060  
Maryport Tip, tel 01900 66922  
open daily 8am to 6pm  
Wigton Tip, tel 016973 45617  
open Tuesday, Thursday,  
Saturday & Sunday, 8am to 6pm

### Silloth Tennis Club

For coaching information call  
David Wise on 07742 547767

### Art Group

Meet in the Golf Hotel from 2nd  
Feb 2022, 10am to 1pm. Then  
every first Wednesday.  
All welcome

### Church Service

St Andrews Church services  
every third Sunday each month

### Production Team

Proprietor:  
Peter McRobert  
Barn Cottage  
Skinburness, CA7 4RA  
Tel: 016973 32180  
Email:  
[office@solwaybuzz.co.uk](mailto:office@solwaybuzz.co.uk)

Editorial Content  
This is down to you, we can  
only publish items if you send  
them to us.  
When sending articles in,  
please supply a contact name  
and number in case something  
requires clarification.  
Published by: Peter McRobert  
with the support of the whole  
community and an army of  
volunteers.

### Doors Open Lunch

'Our Doors Open' meets in  
St Andrews Church every  
Tuesday from noon to 1pm  
for a light lunch with good  
fellowship for a donation only.

### First Responders

Silloth Community First  
Responders train on the first  
and third Tuesday of every  
month in Silloth Community  
Centre at 7pm.

### Silloth Library

Open Monday, Wednesday &  
Friday 10am to 4pm  
Saturday 10am to 1pm  
0303 333 1234  
[cumbria.gov.uk/libraries](http://cumbria.gov.uk/libraries)

### Cash Machines

Are available on Solway Street  
at both the Spar and CO-OP  
supermarkets. Cash is also  
available at Winters Post Office

### Causewayhead WI

We meet on the 2nd  
Wednesday in each month  
at 2pm in Christ Church and  
visitors are welcome

### Miramar Lodge

Miramar Lodge of Freemasons  
based in Station Road Silloth  
meetings every third Thursday  
of the month. You will be made  
welcome.

### Abbeytown Choir

Meet in the Abbey:  
Adult Choir Tuesdays 6-7pm  
Children's Choir  
Wednesdays 4:30-5:30pm  
All welcome!

Please tell us  
when your  
group starts up  
again so we can  
let everyone  
know

Please note that articles,  
letters and virtually all  
content of the Solway  
Buzz are contributed by  
YOU, the local community.  
The Editor reserves the  
right to control what is  
included, however, no  
responsibility whatsoever  
for the content of the  
Solway Buzz can be  
accepted by the Editor, or  
the Publishers.

# Dates for Your Diary

## April

23rd Silloth Drop-In at  
Silloth Community Hall at  
10:30 to 11:30am, see advert

## May

2nd Spring into Silloth  
on Silloth Green 11am to 6pm

7th Coffee Morning with  
Silloth & District Pensioners in  
St Andrews Hall, 10am to 11am

9th Silloth Town Council  
meeting in Silloth Community  
Hall at 7pm

11th Causewayhead WI  
meeting in Christ Church,  
Silloth at 2pm

12th Wigton Theatre  
presents Harvey's Wallbanger  
07977 835094 or Ticketsource

13th Wigton Theatre  
presents Harvey's Wallbanger  
07977 835094 or Ticketsource

14th Mamma Mia  
An ABBA themed musical  
evening in Christ Church in aid  
of Silloth RNLI, Tickets £8 from  
RNLI shop or 016973 31502

14th Wigton Theatre  
presents Harvey's Wallbanger  
07977 835094 or Ticketsource

15th Mawbray Village Hall  
Spring Plant Sales and Craft  
Fair. 10am to 4pm

15th Wigton Theatre  
presents Harvey's Wallbanger  
07977 835094 or Ticketsource

18th Silloth Nursing Home  
League of Friends Coffee  
Morning

Do you have an event  
in the area bounded by  
Abbeytown, Mawbray,  
Silloth, Skinburness, if so  
please let us know.

## May cont'd

20th Soul Weekend at  
Stanwix Park 016973 32666

20th Penrith Beekeepers  
present 'Cooking with Honey'  
in Upfront Gallery, CA11 9TG  
Tickets: 01768 894404

21st Mawbray Village Hall  
Film Club - West Side Story at  
7pm

21st Soul Weekend at  
Stanwix Park 016973 32666

22nd Penrith Beekeepers  
present 'Bee Hotel Making Workshops'  
in Upfront Gallery, CA11 9TG,  
Tickets: 01768 894404

22nd Soul Weekend at  
Stanwix Park 016973 32666

26th Mawbray Village Hall  
Monthly Quiz at 7:30pm

## June

2nd Queen's Platinum  
Jubilee Celebrations on Silloth  
Green

3rd Queen's Platinum  
Jubilee Celebrations on Silloth  
Green

4th Queen's Platinum  
Jubilee Celebrations on Silloth  
Green

5th Queen's Platinum  
Jubilee Celebrations on Silloth  
Green

5th Platinum Jubilee  
Tea in Abbeytown Church at  
2pm free to all Abbeytown  
Parish residents, see advert for  
booking details

Have You  
Sent in  
Your Dates  
yet?

## June cont'd

8th Causewayhead WI  
meeting in Christ Church,  
Silloth at 2pm

18th Silloth Pride on  
Silloth Green

18th Penrith Beekeepers  
present 'Bee Hotel Making Workshops'  
in Upfront Gallery, CA11 9TG,  
Tickets: 01768 894404

19th Penrith Beekeepers  
present 'Gardeners' Question  
Time' in Upfront Gallery, CA11  
9TG,  
Tickets: 01768 894404

## July

2nd Coffee Morning with  
Silloth & District Pensioners in  
St Andrews Hall, 10am to 11am

12th Holme Low Parish  
Council meeting in Silloth  
Community Hall at 7:30pm

13th Causewayhead WI  
meeting in Christ Church,  
Silloth at 2pm

23rd Silloth Cycling  
Festival on Silloth Green

30th Soul on the Green  
starts at 11am to 8pm

## August

25th Wigton Theatre  
presents Merry Wives of W...  
07977 835094 or Ticketsource

26th Wigton Theatre  
presents Merry Wives of W...  
07977 835094 or Ticketsource

27th Craft Sale 10am-2pm  
in St Andrews Hall,  
016973 32185

## August cont'd

27th Silloth Carnival Mega  
Weekend on Silloth Green from  
11am to 6pm

25th [Solfest.co.uk](http://Solfest.co.uk)

26th [Solfest.co.uk](http://Solfest.co.uk)

27th Craft Sale from  
10am to 2pm. Tables for hire  
£12 each phone 016973 32185

27th Silloth Carnival Mega  
Weekend on Silloth Green from  
11am to 6pm

27th [Solfest.co.uk](http://Solfest.co.uk)

27th Wigton Theatre  
presents Merry Wives of W...  
07977 835094 or Ticketsource

28th Silloth Carnival Mega  
Weekend on Silloth Green from  
11am to 6pm

28th [Solfest.co.uk](http://Solfest.co.uk)

28th Wigton Theatre  
presents Merry Wives of W...  
07977 835094 or Ticketsource

29th Silloth Carnival Mega  
Weekend on Silloth Green from  
11am to 6pm

## September

8th Silloth Music & Beer  
Festival on Silloth Green

9th Silloth Music & Beer  
Festival on Silloth Green

10th Silloth Music & Beer  
Festival on Silloth Green

Errors do occur in  
Dates for the Diary  
Please check before  
attending an event

# Soldiers in Silloth

Open: Sat & Sun 1pm to 4pm

Midweek Telephone booking only:  
016973 31246

Admission: FREE *Donations welcome*  
Criffell St, Silloth, CA7 4BZ  
[www.soldiersinsilloth.co.uk](http://www.soldiersinsilloth.co.uk)

Fantastic  
for Families!  
Toy  
Soldiers

The Mawbray Film Club presents

**WEST SIDE STORY**

**SATURDAY 21 May 2022**  
The film starts at 7:00pm

Bring your own cushions, if you wish.  
Bring your own refreshments, cups/glasses. All  
rubbish to be taken with you when you leave at the end of the evening.  
Masks must be worn when moving around the hall or in conversations.  
Children must be accompanied by an adult.  
There are limited spaces available due to social distancing, so pre-booking is  
essential.

You must be a member  
to participate

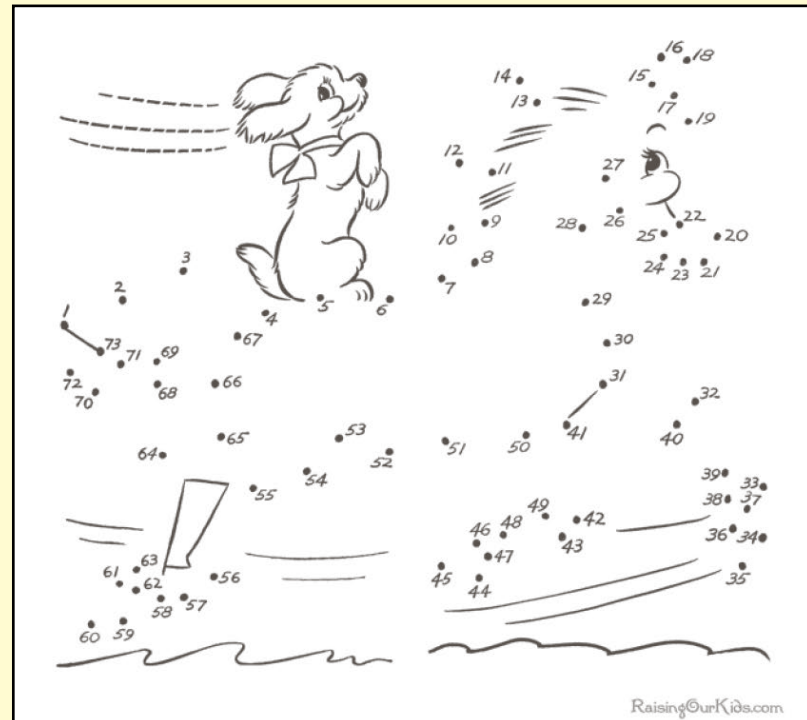
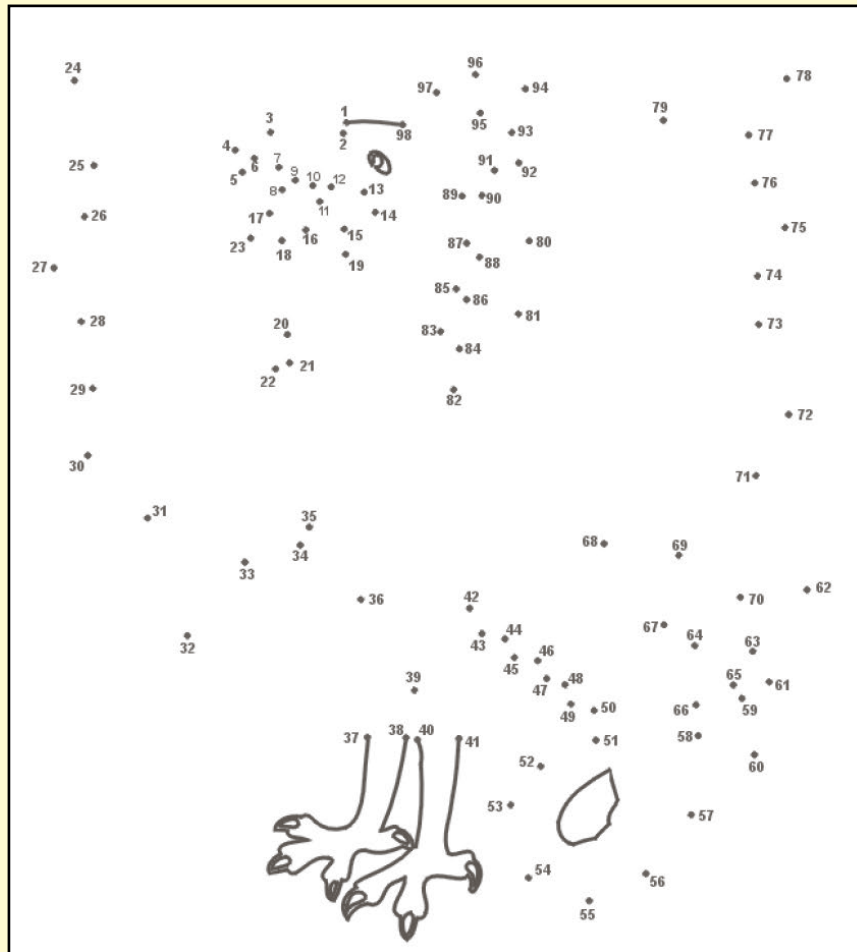
Lifetime Membership £5.00 per adult £8.00 per couple £10.00 per family	Film Night Charge £3.00 per adult £1.50 per child (under 16)
---	---

To join and/or to book  
contact Brian or Lynda:  
01900 881737  
07542 781234  
07926 810074

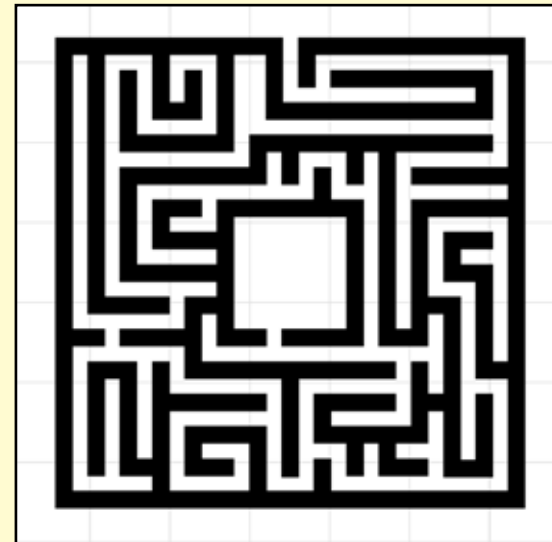


# FUN for ALL ~ Join the Dots & Colour In

Something for All Ages to Enjoy Everyone Can Do This



Not Just for the Kids



## Peter Rabbit

DIRECTIONS: Look for the words vertically, horizontally, diagonally and backwards.

Q	E	C	O	T	T	O	N	T	A	I	L	K	U	S
G	A	Z	Q	F	E	T	U	X	O	U	I	O	H	E
A	N	Z	E	L	E	T	T	U	C	E	U	E	A	O
J	A	C	K	E	T	M	G	M	T	K	G	I	M	H
D	P	X	F	D	N	H	A	I	G	A	T	E	D	S
W	B	Y	R	O	W	S	R	S	J	B	Y	M	E	U
X	J	K	L	D	N	U	D	C	K	L	C	Y	H	C
N	E	R	E	T	B	M	E	H	O	G	S	Y	S	A
Y	W	Y	R	K	U	N	N	I	R	Z	T	F	L	B
P	S	S	T	Z	A	F	Z	E	V	H	K	C	O	B
P	D	P	B	M	S	R	G	F	G	K	W	A	O	A
N	Q	O	O	N	K	O	Z	U	Y	Q	O	N	T	G
T	L	M	H	L	R	K	A	P	X	F	M	T	W	E
T	M	R	J	Z	F	N	B	W	P	P	E	T	E	R
B	L	A	C	K	B	E	R	R	I	E	S	C	O	A

Naughty

Peter

Rake

Shoes

Sneeze

Tea

Tool-shed

Blackberries

Gate

Cabbage

Jacket

Can

Lettuce

Cotton-tail

McGregor

Flopsy

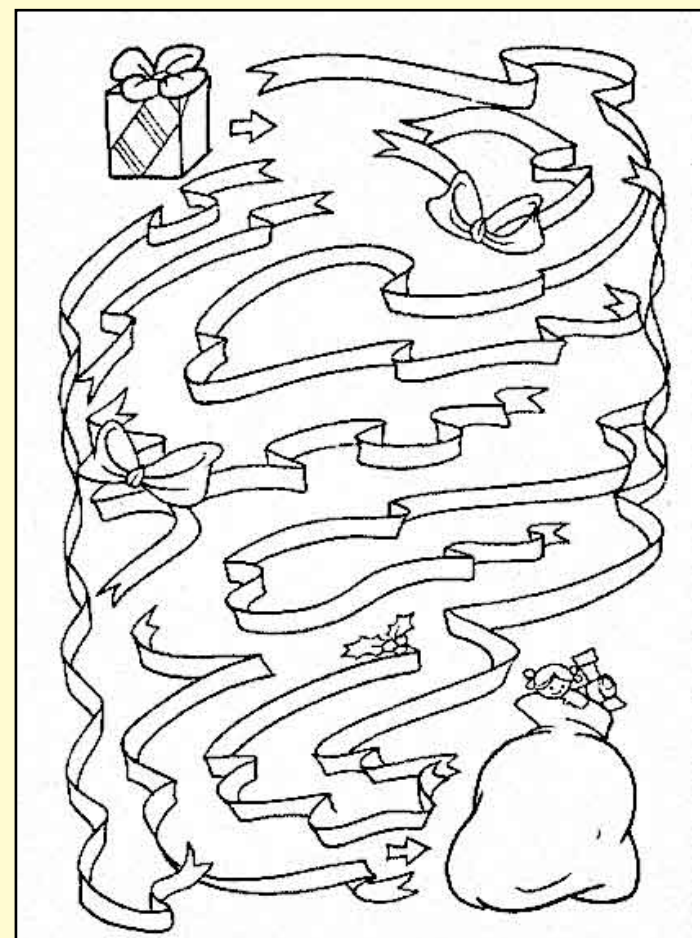
Mischief

Garden

Mopsy



© 2015 puzzles-to-print.com



Enjoy and Have Some Fun





## Local Tradesmen and Services

### All Trades

#### TRIPLE TTT



Here are some of the jobs we carry out:

- Grass cutting
- Hedge cutting
- Moss/weed control
- Fence building
- Brick laying
- Paving
- Roofing
- Rubbish/garden waste removal
- Patio/driveways
- Full design & landscaping
- Tree surgery

- Window cleaning
- Pressure washing
- Patio/driveway cleaning
- Guttering cleaning & installation
- Soffit & fascia boards cleaning
- Painting

Tel: **01900 810008**

Web: [www.triplettt.co.uk](http://www.triplettt.co.uk)

E: [enquiries@triplettt.co.uk](mailto:enquiries@triplettt.co.uk)

### Decorators

#### MIKE JONES

Painter & Decorator

Call now  
for a free quote

Facebook:  
Mike Jones painter and decorator

[mikedecorator53@gmail.com](mailto:mikedecorator53@gmail.com)

T: **07842 355486**

### Denture Repairs

**Addison Orthodontics**  
Dental Repair Service  
54 Esk Street  
Silloth, t: 016973 32208

### Electricians

**Ian the Electrician**  
your local connection

Over 30 years experience  
Friendly and reliable service



All domestic installations  
Inspection and testing  
Maintenance & repairs

Mob: **07727 127000**  
Tel: **016973 23420**

### Firewood

#### Seasoned Firewood Logs

**DELIVERY AVAILABLE**

Tel: Ashley Sharp  
016973 31495  
07762 772208



### Plumbers

**KMG Plumbing & Heating**  
Gas, LPG, Oil, Solar & Solid Fuel systems

Experienced and Local  
Tel: 01900 881462  
Mob: 07590 522621

#### M. TAYLOR

Over thirty years experience in the installation, maintenance and repair of domestic gas and heating systems, all aspects of domestic plumbing undertaken no job too small, local and reliable



Tel: **016973 32672**  
Mob: **07773 069856**

### Chimney Sweep

#### McDermott Chimney Sweep

Fire Service & Refurbishment  
Fully Insured



REGISTERED MEMBER



The Institute of Chimney Sweeps

Mob: **07878 147444**  
Tel: **01228 542420**



### Cleaning Services

#### EILBECK CLEANING SERVICES

Domestic & Commercial  
Cleaning Professionals

Hot & Cold Power Washing  
Carpet & Upholstery Cleaning  
Sand/Abrasive Blast Cleaning

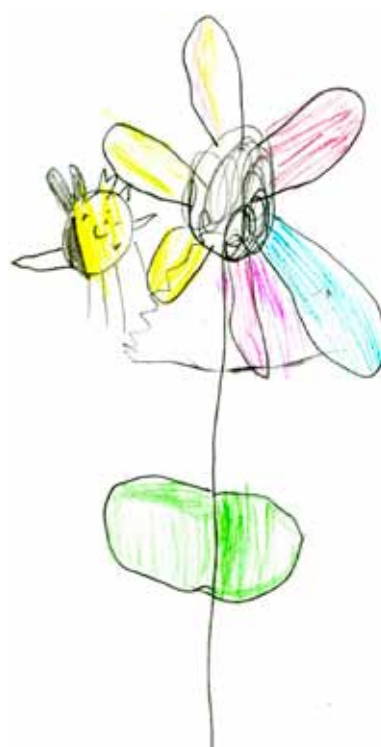
With 25 years experience we pride ourselves in a top quality job everytime

For a free quotation and home visit call  
Tom on **07751 097035**  
QUALITY EVERYTIME

**THESE ADVERTS REALLY DO WORK!**



Bouncy Bees  
by Avie McGuire  
from Holme St Cuthbert School



Queen Bee  
by Sadie Hector  
from Silloth Primary School

### Roofers

#### Allerdale & Eden ROOFING SERVICES

Slating & Tiling • Velux Window Installations  
Repairs • Lead Work • Flat Roofing Specialist  
Fascias & Guttering • Storm Damage  
Insurance Work • **Free Estimates and Free Advice**

Maryport: **01900 813517**

Whitehaven: **01946 313103**

Mobile: **07518 454396**

[www.allerdaleandedenroofingservices.co.uk](http://www.allerdaleandedenroofingservices.co.uk)



#### PM Roofing Specialists

Proprietor Peter McKie, Established 1980

No job too big or small • uPVC Guttering, Facias & Soffits  
• Re-slating • Tiling • Chimney Stacks  
• Flat Roofing Specialists (Firestone rubber cover & GRP Fibreglass with 30 year guarantee)  
Insurance Claims \* Free Estimates

Tel: **01228 548591** or Mob: **07931 362163**  
or **07833 305647** or **07534 050007**

#### John Hunter Roofing Contractors

City and guilds qualified ~ Slating and tiling specialist  
Firestone flat roofing installation

Fascia and guttering ~ Lead work ~ Storm damage  
Tel Silloth 016973 26103 or 07764 357812

#### Advertise Here!

in the Tradesmens Section only **£184** for ten issues  
or a 6.5cm box for only **£322.50** for ten issues



# Green View & Stella's New Look



We've had the decorators in here at The Green View Guest House and Stella's Bistro!

Hard to believe we will have been open for three years this year – although 2022 will be our first full year, (hopefully!) – so we thought the place needed sprucing up a bit. All the bedrooms, the lounge, hall stairs and landings – and of course Stella's – have been treated to a make-over. We're delighted with the results – and we hope all our lovely customers old and new will love our new look too. We're especially pleased with our updated collection of Silloth memorabilia, maps and postcards which help tell our guests the fascinating history of this wonderful little town – something of interest to locals too we hope!

Stella's has had a complete make over with a newly displayed collection of film and theatre posters and programmes from the 1950's and a bright and bold new colour scheme.

Of course, the one thing that hasn't changed is the quality of our food. Chef Archie continues to develop new dishes alongside our firm favourites and, of course, everything – from the bread to our Ice Cream is hand-made right here. We specialise in Gluten Free food and we've new Vegetarian and Fully Vegan options on our latest menu too!

We're looking forward to another great Summer ahead – Most especially look out for special Platinum Jubilee Dinner on Friday 3rd June – more details soon!

So come along and see us soon – booking in advance is strongly advised, but it's always worth giving us a call on the day – we occasionally do have last minute tables available.



## Green View Guest House

### Stella's Bistro

Open  
Wed to Sat  
6pm to 9pm  
booking advisable



**Bed & Breakfast**  
Sea Views  
All rooms en-suite  
Evening Meals  
Bicycle storage  
Free parking

6 Park Terrace, Criffel Street, Silloth, Wigton, CA7 4DQ  
**Tel: 016973 31743**  
**E-Mail: greenviewsilloth@yahoo.com**

## Solway Buzz Phone Book

This section recognises those whose financial help keeps the Solway Buzz going. If you wish to contribute in this way without taking an advert, please contact the Buzz, it costs only £52 a year.

Addison Orthodontics	016973 32208	The Gifted Cat	07852 175753
Allerdale & Eden Roofing	01900 813517	Triple TTT	01900 810008
British Heart Foundation	01900 358783	Upholstery, Irene Armstrong	016973 31836
Christine's Taxis	07917 564583	West Silloth Motors	016973 32833
D A Harrison	016973 42277	Wheyrigg Hall Hotel	016973 61242
David Allen Accountant	01228 711888		
Devonshire House Dentures	01228 529128		
Eilbeck Cleaning Services	07751 097035		
Fairydust Emporium	016973 31787		
Good Companions	016973 31553		
Green View / Stella's	016973 31743		
Hair She Goes	07857 989358		
Harrisons Store Ltd	016973 61231		
Ian the Electrician	07727 127000		
Jaybees	016973 31245		
John Hunter Roofing	07764 357812		
KL Express	016973 33033		
KMG Plumbing & Heating	07590 522621		
Mark Hansford Computer Services	016973 32089		
McDermott Chimney Sweep	07878 147444		
Mike Jones Decorator	07842 355486		
Mike Taylor Plumbing	07773 069856		
Mrs Wilson's	016973 31155		
No. 17 Delicious	016973 32458		
PM Roofing Specialists	07931 362163		
Queens B & B	016973 31373		
Seasoned Firewood Logs	07762 772208		
Silloth Cafe	016973 31319		
Slimming World Loretta	07766 118556		
S.O.S.C.S.	016973 32452		
Stanwix Park	016973 32666		
The Charity Shop	016973 31696		



### Useful Phone Numbers

Age Concern Home Safety Scheme	01946 68986
Allerdale B. Council	03031 231702
Chemist, Silloth:	016973 31394
Church Catholic	01900 814826
Community Grants:	01900 325013
Crime Stoppers:	0800 555111
Dentist, Alma Terrace:	016973 31270
Dentist, Emergency:	01228 603900
Doctor:	016973 31309
Doctor CHOC service	03000 247 247
NHS	111
First Responders can only be called by the Ambulance service, call: 999	
Gas:	0800 111 999
Highways Hot Line	0300 303 2992
Hospital:	01228 523444
Holme St. Cuthbert School, Mawbray:	01900 881242
Holm Cultram Abbey CofE School	
Abbeytown:	016973 61261
MP, Mark Jenkinson:	01900 876189
Neighbourhood Forum:	01900 325013
Police:	101
Quakers, Wigton:	01228 523174
Register Office, Wigton:	01228 221122
Samaritans:	01228 544444
Silloth Community School:	016973 31234
Silloth Library	016973 31944
Silloth Nursery & Junior School:	016973 31243
Silloth Post Office	016973 31323
Silloth Town Clerk:	016973 31128
Silloth Tourist Information Centre:	016973 31944
Solway Buzz:	016973 32180
Paragon Vet:	01228 710208
Millcroft Vet:	016973 23898
Waste Disposal Dept:	01900 702800
Water LeakLine:	0800 330033
West Cumbria Carers	01900 821976
Please, let us know what you want included	

**Advertisers  
entries  
are  
always  
Free  
in  
the  
Phone Book**



# Green is the Colour at Silloth Dock

Report & Photos by:  
John Forrester  
More coverage of shipping at  
Silloth can be found at [www.cumbriashipphotos.weebly.com](http://www.cumbriashipphotos.weebly.com)



Coincidentally, two green-hulled ships called at Silloth in quick succession during March. This colour is not as common as the more traditional blue or grey for merchant shipping. Old favourite ZAPADNY was first to arrive followed by WIDOR making her first call. Some welcome Spring sunshine greeted these visits providing good photo opportunities for enthusiasts.

Molasses tanker ZAPADNY looked in good shape as she passed

Criffel on her way to Silloth. This was her second delivery of the year, having loaded from bulk storage in Amsterdam. After carefully lining-up off the port she made her final approach to coincide with maximum water depth at the dock entrance. At close quarters she could be seen to be well-protected by fenders at the bow, no doubt learning from previous close encounters with the outer wall. The ship has a reputation for being difficult to manoeuvre in tight situations. On this occasion she

was gracefully guided into the dock without incident.

The 34 year old tanker has multinational credentials, being built in Bulgaria, owned by a Ukrainian company and registered in the Central American country of Belize. She is a dedicated molasses tanker in high demand for transporting the syrupy cargo around Europe, probably because she has a more efficient discharging system than many vessels of similar size. Her full load of molasses for Silloth was

unloaded within 24 hours and she was ready for a return sailing to Amsterdam.

Our second visitor, WIDOR, arrived from the more distant country of Estonia. The port of Muuga is located in the Gulf of Finland in the far north of the Baltic Sea, a seven-day sailing away. Appropriately, the green-hulled ship arrived on St. Patrick's Day, but only just, it being almost midnight when she was tied up. This meant only dockside photo

shots were available. These were quite rewarding as they showed busy scenes of the cargo of bagged fertiliser being unloaded. The German operated ship is built to a high standard being designated 'iceclass.' Thankfully on her visit to this part of the world the ship's strengthened hull and propulsion unit aren't needed. After a brief stay, the ship departed for South Wales to load the next cargo before heading to her more familiar territory of Sweden.

## March Shipping at the Port of Silloth

Report by: Capt Tim Riley,  
Harbour Master, Short Sea Pilot

### February

28th Eastern Vanquish with a cargo of Wheat from Wolgast then on to Kilroot

28th Wilson Brugge with a cargo of Fertiliser from Muuga then on to Belfast

### March

4th Zapadny with a cargo of Molasses from Amsterdam then back to Amsterdam.

17th Widor with a cargo of Fertiliser from Muuga then on to Newport.

19th Woodland with a cargo of Furness Bottom Ash from Kilroot then on to Sandbanks.

March was a good month for the port with three vessels calls and two vessels still in port from February, so they count in March! Plenty of activity from the fishing fleet, with what appeared to be several instances of mechanical issues during the month making it difficult for the vessels to remain out of port for very long. Hopefully these have been rectified now and they will start getting the catches up a little.

Four different cargoes this month, Fertiliser being the

main one, as usual, but Grain and Molasses are also normal cargoes for us too. With some Fly Ash brought in as well for inclusion in the making of concrete construction blocks for the building industry. We are hoping to see more in the coming months as various industries move into overdrive to catch up with lost COVID time.

Ukraine will become an issue for imports of many raw materials as soon as the fighting stops and they start to rebuild their homes and lives. We watch closely on availability of materials from a country wide view throughout the company as we operate a good number of ports.

We have vessels booked for April and so we are looking forward to being able to keep some flow of supplies inbound, recent warm weather was much appreciated and we at the port look forward to a long hot summer.

On a lighter note, the Coastal Footpath route is still being discussed here in Silloth with the Council and Natural England. As it passes through port land, we need to ensure that we do not prevent the port from growth in

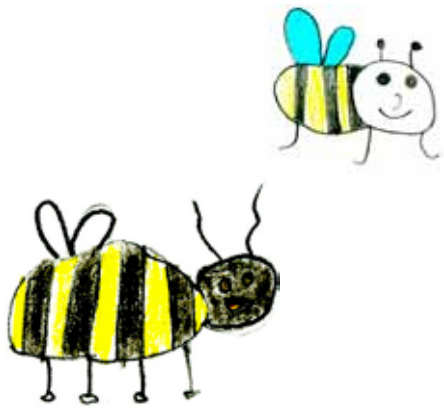
the future and are asking that the path be moved, however slightly to allow for growth. The Golf club has also been approached to see if a footpath can be created across the front of their parking areas leading further onto ABP port land. At some stage there may be a necessity to switch the parking from the current location to a site on the bend to the left of the road where it turns to the Convalescent Home, this area is larger and would allow for expansion around Marshall dock without stopping pedestrian access where a new pathway is planned across what is currently Solway Logistics Parking area.

Please not all the land currently parked on for access to West Beach is owned by ABP and there are no rights of way except to the Convalescent home. Public access is granted by ABP (and we won't be stopping it) but we would appreciate it if the locals respected (and visitors) the leaseholders and owner's rights over the land.

We look forward to increasing demand for the use of the port with the prospect that the Moorside project may now come into fruition if the government ever gets its act together.







Buzz Bee  
by  
Lily Mae Brown  
from  
Holm Cultram  
Abbey School



Daisy  
by  
Isla Brown  
from  
Holm Cultram Abbey  
School



Family of Bees  
by  
Fellicity  
Hewitt  
from  
Holm  
Cultram  
Abbey  
School

## Don't be One of the 20,000 Victims of This Scam

More than £50 million was lost last year to scams where victims are tricked into handing over control of their computer or smartphone to criminals.

New data from Action Fraud, the national reporting centre for fraud and cybercrime, reveals that 20,144 people fell victim to scams where they were persuaded to grant criminals remote access to their device. Victims reported losing a total of £57,790,384 – an average loss of £2,868 per victim.

**Action Fraud**  
National Fraud & Cyber Crime Reporting Centre  
**0300 123 2040**

### What are remote access scams?

Remote Access scams will often begin with a browser pop-up saying that your computer is infected with a virus, or maybe a call from someone claiming to be from your bank saying that they need to connect to your computer in order to cancel a fraudulent transaction on your account. Regardless of the narrative the fraudster's use, their goal is to steal your money or access your financial information by tricking you into allowing them to remotely connect to your computer.

Detective Chief Inspector Craig Mullish, from the City of London Police, said: "While

remote access tools are safe when used legitimately, we want the public to be aware that they can be misused by criminals to perpetrate fraud. We often see criminals posing as legitimate businesses in order to trick people into handing over control of their computer or smartphone. You should only install software or grant remote access to your computer if you're asked by someone you know and trust, such as a friend or family member, and never as a result of an unsolicited call, browser pop-up or text message."

### How to protect yourself

Only install software or grant remote access to your computer if you're asked by someone you know and trust, such as a friend or family member, and never as a result of an unsolicited call, browser pop up, or text message. Remember, a bank or service provider will never contact you out of the blue requesting remote access to your device. If you believe your laptop, PC, tablet or phone has been infected with a virus or some other type of malware, follow the NCSC's guidance on recovering an infected device. Protect your money by contacting your bank immediately on a different device from the one the scammer contacted you on. Report it to Action Fraud on 0300 123 2040 or via [actionfraud.police.uk](http://actionfraud.police.uk). If you are in Scotland, please report to Police Scotland directly by calling 101.

**D.A. Harrison**



Haulage & Storage  
Sand, Gravel & Aggregates  
Readymixed Concrete



Demolition & Site Clearance  
Licenced Waste Disposal Site & Skip Service  
Stevedores at Silloth Docks

Admin: 016973 42277 Transport: 016973 44000  
Skip Hire: 016973 31000 RMC: 016973 61777  
Fax: 016973 42210 E: [info@daharrison.co.uk](mailto:info@daharrison.co.uk)  
Silloth, Wigton, CA7 4NS

**ATLAS**  
CONCRETE LIMITED

Tel: 016973 32585 or 016973 42277  
Silloth, Wigton, CA7 4NS, [www.atlasconcrete.co.uk](http://www.atlasconcrete.co.uk)

Manufacturers of all types of prestressed concrete panels and general purpose instant walling. Farm and industrial use, hollowcore floor units and 't' beams made to measure. Concrete posts & panels for instant security walling

**DA Harrison & Company**

Petrol, Diesel & Convenience Store

Waverton, Wigton, Tel: 016973 42277

### PENRITH BEEKEEPERS ASSOCIATION

Hive Geometrix Exhibition, Upfront Art Gallery, Penrith CA11 9TG



Tuesday 17th May - Sunday 3rd July  
'Honey Bees through the Seasons'  
Paintings by Stephen Livingstone

Friday 20th May  
'Cooking with Honey' A presentation and supper

Sunday 22nd May & Saturday 18th June  
Bee Hotel Making Workshops

Sunday 19th June  
Gardeners' Question Time

[penrithbeekeepers.org](http://penrithbeekeepers.org), Tickets: 01768 894404, E: [mr4cnr@gmail.com](mailto:mr4cnr@gmail.com)

### THE GOOD CAUSES CHARITY SHOP

1 Queen's Court, Criffel Street, Silloth

Contact: Denise Poland on 07999 752713

Closed Mondays

Please help us to help them



**FREE & FAST  
COLLECTION**

of your unwanted furniture and electricals

Call BHF Workington 01900 358 783

Book online: [bhf.org.uk/collection](http://bhf.org.uk/collection)

© British Heart Foundation, registered charity in England and Wales (225971) and in Scotland (SC039425)

*Hair She Goes*  
*Mobile Hairdresser*



*Silloth  
and  
district*

*Call  
Melanie  
on:*

**07857 989358**

Fully  
Insured  
& DBS  
Checked  
NARPS  
Registered



**Do you need a  
Cat Sitter?**

Genuine cat loving,  
family business  
Excellent references

Contact: Richard & Nicola Ives

**07852 175753**

[www.thegiftedcat.co.uk](http://www.thegiftedcat.co.uk)



# Silloth Multi Use Games Area (MUGA) Available to Hire



Report by: Stephen Hart

The Multi Use Games Area on Silloth Sports Pitches are taking bookings at special rates for the summer.

It is available to everybody; locals, visitors, clubs and is popular for childrens parties.

For more information you can



contact Mavis at Solway Fitness Centre or tel 07923 801897.

We will also be holding summer camps for kids during the summer school holidays this year, there will be more information next month.



## Suicide Safer Allerdale Launch Event

An opportunity to learn more about suicide prevention and how we as a community can keep people safe

Grasslot Welfare, Maryport  
Wednesday 4th May 6.30pm-8.30pm

Bring your ideas, your enthusiasm and the hope that we can make a difference

Free to attend and refreshments are provided.



Every life matters...

To book your place simply scan the code



## Can You Help?

Links Close, W. Silloth 25 properties

If the Buzz paper does not fly through your letter box in the areas we cover, it is because we have not found a volunteer.

If you would like to join our hive of volunteers we would be pleased to hear from you, call Peter on 016973 32180 for more info.

## Silloth Tide Table

MAY 2022							SILLOTH	
Date	DEPTHS ON NEW DOCK GAUGE (1.8m ABOVE CD)							
	High Water				Low Water			
	Morning		Afternoon		Morning		Afternoon	
	Time	m	Time	m	Time	m	Time	m
1 SU	11 58	7.0			06 42	-1.0	19 00	-1.0
2 M	00 17	6.9	12 31	6.9	07 16	-1.0	19 29	-0.9
3 TU	00 47	6.8	13 04	6.7	07 48	-0.8	19 58	-0.7
4 W	01 19	6.6	13 38	6.4	08 19	-0.7	20 27	-0.5
5 TH	01 51	6.3	14 13	6.0	08 50	-0.4	20 56	-0.2
6 F	02 26	6.0	14 52	5.6	09 22	-0.2	21 29	0.1
7 SA	03 05	5.6	15 38	5.1	10 00	0.1	22 10	0.4
8 SU	03 55	5.1	16 38	4.7	10 51	0.4	23 06	0.7
9 M	05 06	4.8	17 57	4.5			12 02	0.5
10 TU	06 31	4.8	19 18	4.7	00 22	0.8	13 24	0.4
11 W	07 43	5.1	20 22	5.2	01 43	0.6	14 33	0.1
12 TH	08 38	5.7	21 10	5.8	02 50	0.2	15 32	-0.3
13 F	09 25	6.2	21 53	6.4	03 48	-0.1	16 24	-0.6
14 SA	10 07	6.7	22 33	6.9	04 41	-0.5	17 14	-0.9
15 SU	10 48	7.1	23 13	7.3	05 29	-0.8	17 59	-1.1
16 M	11 29	7.4	23 54	7.5	06 16	-1.1	18 43	-1.2
17 TU			12 13	7.5	07 02	-1.2	19 26	-1.2
18 W	00 36	7.5	12 59	7.4	07 47	-1.2	20 09	-1.1
19 TH	01 22	7.3	13 50	7.1	08 33	-1.1	20 53	-0.8
20 F	02 12	7.0	14 44	6.6	09 21	-0.9	21 39	-0.4
21 SA	03 09	6.6	15 47	6.1	10 13	-0.6	22 34	-0.1
22 SU	04 14	6.2	16 58	5.6	11 16	-0.3	23 41	0.2
23 M	05 26	5.9	18 15	5.4			12 28	-0.2
24 TU	06 41	5.8	19 30	5.5	00 55	0.2	13 38	-0.2
25 W	07 49	6.0	20 34	5.7	02 05	0.1	14 43	-0.3
26 TH	08 47	6.2	21 26	6.0	03 09	-0.1	15 43	-0.4
27 F	09 37	6.4	22 09	6.3	04 06	-0.2	16 34	-0.5
28 SA	10 19	6.5	22 46	6.5	04 54	-0.4	17 16	-0.6
29 SU	10 57	6.6	23 19	6.6	05 35	-0.5	17 52	-0.6
30 M	11 33	6.7	23 52	6.7	06 12	-0.6	18 26	-0.6
31 TU			12 08	6.6	06 48	-0.6	18 57	-0.5

Times shown in UTC. Add 1 hour for British Summer Time.

Entertainment  
It's RUE  
Let's Party

Spring into Silloth  
on  
Silloth Green  
from 11am to 5pm  
2nd May 2022

SILLOTH  
MOTORCYCLE  
MUSEUM

OPENING HOURS  
9am - 4pm  
Apart from:  
Mon: Closed  
BHM's: 9am - 4pm  
Weds: 9am - 1pm

A GREAT RANGE TO VIEW

TEA, COFFEE & SOFT DRINKS AVAILABLE

FREE  
ADMISSION  
SOLWAY STREET, SILLOTH

sillothmotorcyclemuseum.co.uk | Tel: 07764 405136