

## Silloth Tennis Club

### Tennis Club Gearing Up for the Summer

It's only February, but Silloth Tennis Club are already in the planning stages for the forthcoming summer season of events and tournaments.

With 2007 being our seventh summer of activity since the club's revival we are always keen to introduce new

ideas and projects for our young players. This summer will be no different with a few new plans in the pipeline such as small open events held during school holidays. We are also keen to add adult coaching and adult competition to the programme.

### Major Junior LTA Open Event to be Held at Maryport

Week beginning August the 13th sees a major step forward for Tennis in West Cumbria with the First Maryport Open.

Held at Netherhall and with singles and doubles competition at under 10, 12, 14, 16 & 18 levels, the event is being advertised nationwide and will hopefully bring players from outside the

county to the area.

This will probably involve some players staying over as they progress through their respective draws and will hopefully bring trade to the bed and breakfast industry.

If anyone is interested in bringing sponsorship to the event then please contact David on 07742547767.

### Men's Team Unbeaten in West Cumbria Floodlit League

After winning division 2 just before Christmas, Silloth Tennis Club's men's team have got off to a flying start to division 1 and are still unbeaten with half the season over already.

The usual team of Angus Harrison, Malcolm Wise, Rory Johnstone, Ryan Johnstone, Jamie

Harrison, Colin Campbell and David Wise have added the services of Scott and Chris Whittle and are looking good for the title with only 4 matches left.

#### RESULTS

Silloth 5 Harrington A 3  
Silloth 4 Lorton 4  
Silloth 4 Maryport B 4  
Silloth 5 Maryport A 3

## Solway Autograss Club

Report by: Malcolm Brown

It is sad to bring the news that Solway Autograss Club has moved from Silloth Airfield and the racing will now be held at Hay Close Farm, Calthwaite. Details can be found on our website to get there.

Since moving to Silloth in 2004 the club has grown at a fantastic rate almost doubling the membership. Because of this we feel that we have outgrown the site at Silloth and we need to be closer and more central to other clubs in the UK.

We are hoping to draw other "grassers" from Manchester, Darlington and Scotland and for us to do this we need to be closer to them.

Another factor is the type of soil; the one at Silloth is of a sandy type rather than a clay type. When the track is prepared then raced on the clay type soil sticks together and produces a better racing surface.

So if you want to lose the wife and kids for a weekend bring the family to Hay Close Farm so you can watch the racing and they can visit the Maize Maze.

Solway Autograss Club:  
www.solway-autograss.co.uk  
Hay Close Farm:

## Silloth on Solway Golf Club



L-R: Toddy Winter, Gwen Bosward, Janet Hume, Margaret English, Joe Jigsaw, Sandra Bradley, Annette Gibbons

Report by: Margaret English  
Silloth on Solway Golf Club  
Lady Captain 2007

Lady Captain 2006  
Toddy Winter worked very hard raising money for her two charities:

Great North Air Ambulance and Jigsaw in Carlisle.

Representatives from the two charities came to Silloth on Solway Golf

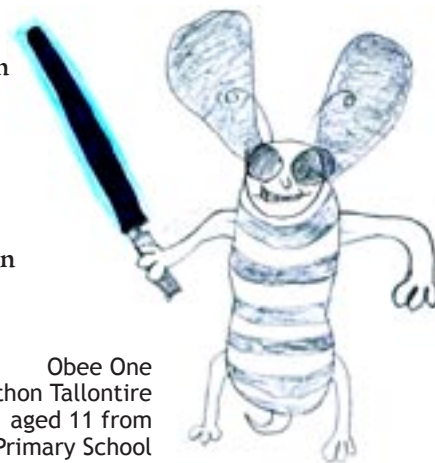
Club on 12th February where they were delighted to each collect a cheque for £550 from Toddy.

Well done Toddy!

www.hayclose.com  
Solway Autograss Club,  
Hay Close, Calthwaite,  
Penrith, Cumbria, CA11 9PX.

The 2007 dates:  
Sunday 25th March  
Sunday 22nd April  
Sunday 13th May (NQ)  
Sunday 10th June  
Saturday 7th July and  
Sunday 8th July  
(Two Day Meeting;  
Solway Open -

Cumberland Open - Northern Challenge)  
Sunday 19th August  
Sunday 16th September  
(Gordon Jameson Memorial).



Obee One  
by Jonathon Tallontire  
aged 11 from  
Silloth Primary School

# BOWMANS CHEMIST

## Blood Pressure Awareness Week

There are 16 million people in the UK with high blood pressure. High blood pressure is the direct cause of half of all strokes and heart attacks in the UK. Failure to control blood pressure to target levels results in 62,000 unnecessary deaths each year.

Unfortunately 1/3 of people with high blood pressure don't know they have it.

**Monday 5th March – Friday 9th March**

**Call in for your free blood pressure check**

For more information drop in any time or contact Jenny on 016973 31394

**NUMARK PHARMACISTS**  
TOGETHER WE'RE STRONGER

Bowmans Chemist  
1-3 Station Road  
Silloth