



Who would want to swim in the Solway in January?
Find out on page 3.



What were the Brownies and others doing in Christ Church?
Find out on page 6.



What were the Lifeboat lads doing in Allonby?
Find out on page 7.



What did the name Thomas Reay mean to Abbeytown?
Find out on page 8.



What are these men doing and whose roof is this?
Find out on page 9.



Who were the ploughman's lunches for?
Find out on page 9.



What were the Male Voice Choir doing in Abbeytown?
Find out on page 10.



What have these clever clogs been up to?
Find out on page 11.



What has Toddy Winter been up to down at the Golf Club?
Find out on page 16.

Skinburness Hotel



the fight goes on

We have won the first stage, as their planning application to develop the site was eventually turned down.

Despite having their application for development of the site turned down, Adrian and Vanessa Moore went ahead with the auction of the hotel's contents.

They have now put in an appeal against the planning decision, this will be considered by an independent Inspector based in Bristol. Effectively, we are back at stage one again, but with a fresh view being taken of the situation. We have to get mobilised and all pull together if we want to win.

Is it too late?

No. Although the hotel is looking very sad, there are still prospective purchasers who are very interested. Also, the removal of internal fittings can be reversed. We must keep fighting. This landmark building can still be saved to re-open as a hotel.

Save Our Skinburness

**Come to a Public Meeting
in the Golf Hotel on
Tuesday 27th February
at 7:45pm**

**What Has Happened So Far?
What Do We Do Now?
Come along and find out**

New Caravan Care Shop in Eden Street



After visiting Silloth over the past four years Colin and Linda Taylor realised that a gap in the market offered a perfect business opportunity for them.

At the ripe old age of 56 and 50'ish respectively they sold their home just outside of Bolton and moved to Silloth in September of last year to open up CARAVAN CARE in Eden Street, Silloth on 26th February.

Colin and Linda agree that the move has been similar to a journey in a time machine. Moving from the fast paced, highly aggressive and in many instances hostile environment of Bolton to the quiet cobbled streets of Silloth has been

quite amazing. "People actually greet you in the street and are genuinely interested in how you are and how you are doing. Its been amazing how much local support and encouragement we have had, its been like finding a whole new family"

Caravan Care's shop (run by Linda), is situated in Eden Street in Silloth and supplies caravan and camping parts and accessories to the holiday community in and around the Solway Basin. Colin will concentrate his efforts on the more hands on tasks of Timber Decking Design and Construction, Caravan Valeting, Pressure Washing of static sites, also Decking and One-Off or Annual Garden Service contracts.

"I can't imagine anyone having to wait six months for decking around their static or wanting to come on holiday to spend the first three days of their hard earned break cleaning their static, tidying up their overgrown garden or trying to get rid of that treacherous green algae that has built up on their driveway and decking making it as slippery as a banana skin"

"When we realised that nobody seemed to be offering this full range of services, we just couldn't resist the opportunity"

For more information about the services, or for a free, no obligation quotation, contact Colin or Linda on: 07921 567 413 or email: info@caravan-care.info.

Caravan Care

Caravan and Camping Spares and Accessories
Timber Decking Design and Construction

Interior and Exterior On-Site Caravan Valeting
Site and Timber Deck Pressure Washing

Garden Maintenance
17 Eden Street, Silloth
Tel: 07921 567 413

info@caravan-care.info
www.caravan-care.info

Free, No Obligation Quotations

KL EXPRESS Chinese Takeaway
43 Eden Street Silloth

**OPEN at 5pm Every Day
Offering a Wide Variety of Dishes for Every Taste**

Please Feel Free to Drop In for a Menu

Telephone Orders Welcome: **016973 33033**

Beware the Tree of Heaven

Gardeners are being told to be on the look out for a 'Tree-of-Heaven' invader, the experts say Ailanthus altissima introduced from China in 1751 has spread so rapidly that it could threaten biodiversity and plant health.

Numbers of the Tree-of-Heaven, so called because it swiftly grows to 80 feet or more, have quadrupled in 10 years as temperatures rise. It smothers native species and damages sewers with its roots. The tree uses a technique called allelopathy to leak toxins into the ground.

Tree-of-heaven reproduces both sexually (seeds) and asexually (vegetative sprouts). Flowering occurs late in the spring to mid summer. The species is dioecious, with male and female flowering on separate trees. Fruits are papery, somewhat twisted, winged structures that are tan to pink-coloured occurring in large clusters from September to October of the same year, and may persist



on the tree through the following winter.

One study reports that an individual tree can produce as many as 325,000 seeds per

year. Established trees also produce numerous suckers from the roots and re-sprout vigorously from cut stumps and root fragments.

Princess Bee-trice by Hannah Fearon aged 5 from Silloth Primary School



Whist & Domino Drives

On Tuesday January 2nd at the afternoon Whist Drive of Silloth and District Pensioners held in the Recreation Hall, a presentation of the David Rowledge Memorial Cash and Salvo Prize was made.

This was to Mrs Dorothy Rowell by Chairperson Diana Shaw. Dorothy won the most games during 2006 and was congratulated by everyone.

Anyone moving into the area who would like information regarding the weekly Whist and Domino Drives played in the Recreation Hall ring Diana Shaw on: 31228.

Clive's Shape 'n' Style

Professional Matrix Appointed Hair Salon

MATRIX Appointed Salon

Appointments and Cool Aftercare Products for all Hair Types

The Salon to keep your Hair in Excellent Shape 'n' Style

Tel: 016973 31378
or call at 30 Eden Street, Silloth

Cakes for Charity

We are making CAKES for all occasions:
Special Celebrations
Anniversary
Birthday
Christening
Wedding



If you buy cakes from us, not only do you get a delicious cake for yourself, you are also helping other's, for each cake sold we make a donation to charity. Cakes can be ordered at any time.

To order please contact: Sarah 016973 32089, Edith 016973 31607 or Eva 016973 31339

The Good Companions Residential Care Home

Long & Short Term Stays in Single En-Suite Rooms



Criffel Street ~ Silloth ~ tel: 016973 31553

WEST VIEW GUEST HOUSE

B & B OR Room Only

9 Station Rd Silloth
016973 31449
WESTVIEWQUESTHOUSE.CO.UK



Princess Bee by Corrie Nattrass aged 6 from Holme St. Cuthbert School

RNLI New Year Dip in the Solway



L-R: Dean Robson, Sue Kent, Pat Higgins, Kurt Money, Jacky Kilpatrick, Kevin Irwin and Stuart Sprott

Report by: Eddie Studholme

Members of Silloth Lifeboat Crew took their annual dip in the Solway on Sunday 14th January at 10:30am off the slipway at the boat house.

Some of them were sponsored to do the dip; proceeds of which are going to the Silloth Save One Train Many Lifeboat Appeal.

This event usually takes place on the first Sunday in January. That wasn't possible this year as the crew had to attend to the incident with the car on the beach under the lifeboat slipway, so they were persuaded to

put their invigorating dip off for a week.

As you can see from the photographs, it was quite cold that day, although at least it was dry for the photographer, if not the swimmers.

The photographs do show that the girls did swim away from the slipway, the lads were so fast that it was difficult for the photographer to catch them in the water.

Editors comment: Perhaps in 2008 they should each be timed swimming and a prize given for the one who lasts longest. Although I think they all deserve a reward.

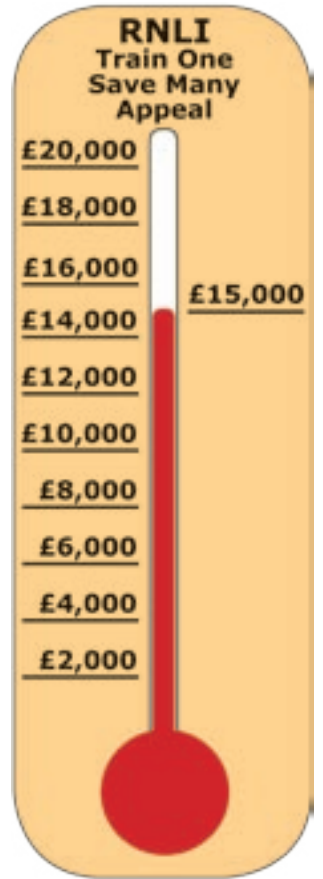


The lads got into the water first and were the fastest back up the ramp looking for warm towels



While the girls went in slowly, they will tell you they did at least go for a swim, although it didn't last long

RNLI Train One Save Many Appeal



Have You Lost a Cat

Does this beautiful cat belong to you?

A large white cat with black tail & ears.

It's taken up lodgings at 38 Skinburness Drive, Silloth.

If you think he may be yours please contact: N Busby 016973 31052.

Allison Design Partnership

Plans & Applications for:

- New Builds
- Conversions
- Fire Plans
- Grant Work
- Change of Use

Contact Bill or Mark

The Albion
Eden Street, Silloth
Tel: 016973 31321
allisondesign@tiscali.co.uk

FIRST TIME BUYERS

Feeling a little lost?
We are here to guide you...



To get your **free** copy of our
FIRST TIME BUYER GUIDE

Cumberland
Building Society

Visit: Your local branch Phone: 0800 077 6858 Click: www.cumberland.co.uk

Your home may be repossessed if you do not keep up repayments on your mortgage

FORGET ME NOT

FLOWERS

Fresh & Silk

Bouquets, Arrangements
Weddings & Functions
Funeral Tributes

BALLOON MANIA

Fantasy Clouds, Balloon Clusters, Foil Balloons
Spiral Columns, Double Bubbles, Pearl Arches
Balloons in a Box, Exploding Balloons

10A Eden Street, Silloth, tel: 016973 33030

Golf Hotel

Open all day

Morning Coffees from 10am

Bar Meals 12 noon to 2pm and 6pm to 9pm

Extensive menu plus specials and
Traditional Roast Lunches every Sunday

Afternoon Teas

Restaurant Meals - for that special occasion

Table d'hôte dinner £18.50, also a la carte

Wedding Receptions

Christening Meals

Wedding Anniversaries & other functions
Private Rooms for parties of all sizes

We use fresh local produce, including
Solway Shrimps. and do our own baking

Tel: 016973 31438

RAY'S SHRIMPS

Factory Outlet
Now Open

PEELED
BROWN SHRIMPS
VACUUM PACKED
VARIOUS PACK SIZES
AVAILABLE
POTTED SHRIMPS IN
BUTTER - TRADITIONAL
ALSO WITH GARLIC
TRADE ENQUIRIES WELCOME

Tel/Fax: 016973 31215
www.raysshrimpsltd.co.uk
julie@allison4990.fsnet.co.uk
1 Station Road Ind Estate,
Silloth, CA7 4AE
Approval No. UK AE027 EEC

Regular Weekly Events

Mondays
Bingo – Silloth Social Club, Waver Street @ 7:15pm
Domino Drive – Recreation Hall, Eden Street
Playing Field @ 7:30pm

Tuesdays
Bingo – Bowling Club, Eden Street @ 7pm
Whist Drive – Recreation Hall, Eden Street
Playing Field @ 2pm

Wednesdays
Coffee Morning – Silloth Nursing Home @ 10am
Bingo – Silloth Social Club, Waver Street @ 7:30pm

Thursdays
Market – Criffel Street 10am to 4pm
Whist Drive – Recreation Hall, Eden Street
Playing Field @ 7:30pm

Fridays
Bingo – R.A.F.A. Club @ 7:30pm

Saturdays
Bingo – Silloth Social Club, Waver Street @ 7:30pm
Music & Dancing – R.A.F.A. Club, evening

Sundays
Market – Criffel Street 10am to 4pm
Market & Car Boot – Silloth Airfield 10am to 4pm
RNLI – Exercise @ 10am
Bingo – Bowling Club, Eden Street @ 7pm

Silloth Library

Opening Hours:

Monday	2 p m - 7 p m
Tuesday	c l o s e d
Wednesday	10am-1:30pm 2:30pm-5pm
Thursday	10am-1:30pm 2:30pm-5pm
Friday	10am-1:30pm 2:30pm-5pm
Saturday	10am-12noon

Books for all ages including children’s and large print, and talking books
Reference and Information
Storysacks

Also available for a small fee:
Videos and DVD’s
Audios CD’s
Photocopying
Computers with Internet access (concessions apply - please ask)

Membership is free to everyone

Please call in or telephone (016973) 32195

Check out SolwayBuzz.co.uk for photos of local events

Production Team

Proprietor:
Peter McRobert
Barn Cottage
Skinburness, CA7 4RA
Tel: 016973 32180
Fax: 016973 32133
Email:
peter@solwaybuzz.co.uk

Editorial Content
This is down to you, we can only publish items if you send them to us.
When sending articles in, please supply a contact name and number in case something requires clarification.
We will accept letters, faxes or emails, but we do prefer emails as we do not have a typist to type your articles out.

Published by:
SolWeb.biz with the support of the whole community and an army of volunteers.

Abbeytown Library

Abbeytown Library
Holm Cultram Primary School
Abbeytown
Wigton
CA7 4RU
Tel: 016873 61425
Assistant in Charge:
Noelene Foster
Monday: 3 - 5 pm
Tuesday: Closed
Wednesday: 3 - 5 pm
Thursday: Closed
Friday: 3 - 5 pm

- Fiction
- Non-fiction
- Reference and Information Services
- Children’s Books
- Homework help
- Talking Books
- Local Studies Collection

And for a small charge:

- Requests
- Fax Facility
- Internet and PC use (some concessions apply)

We are open throughout the School Holidays

Useful Tel Numbers

Chemist, Silloth:	016973 31394
Community Grants:	01900 325013
Crime Stoppers:	0800 555 111
Dental Emergency:	01228 603620
Dentist, Buchanan:	016973 31270
Dentist, Steel:	016973 32042
Doctor:	016973 31309
Gas:	0800 111 999
Hospital:	01228 523444
Holme St. Cuthbert School	
Mawbray:	01900 881242
Holm Cultram Abbey CofE School	
Abbeytown:	016973 61261
MP, Tony Cunningham:	
	01900 65815
Abbeytown Library	016973 61425
Silloth Library:	016973 32195
NAP	01900 702898
Neighbourhood Forum:	01900 325013
Police:	01900 602422
Quakers, Wigton:	01228 523174
Register Office, Wigton:	016973 66117
Samaritans:	01228 544444
Silloth Community School:	
	016973 31234
Silloth Nursery & Junior School:	
	016973 31243
Silloth Town Clerk:	016973 31128
Allerdale B. Council	01900 702702
Silloth Tourist Information Centre:	
	016973 31944
Solway Buzz:	016973 32180
Taxi (Private Hire):	016973 31557
Taxi (Private Hire):	07999 934555
Vet:	016973 20242
Waste Disposal Dept:	01900 702800
Water LeakLine:	0800 33 00 33

This section is for your convenience, so please, let us know what you want included, also any changes to numbers.



Your editor as seen by caricaturist Glynn Edwards
glynncartoons@aol.com

Copy Date ➡

Dates for the Diary

February

25th Trinity Methodist Morning Service @ 10:30am
Mrs D Wallis

26th Wind Turbine protest meeting in Golf Hotel @ 7pm

26th Solway Woodcarvers in Silloth Community Hall from 7pm to 9:30pm, cost £3 per session. All welcome

27th Skinburness Hotel development protest meeting in Golf Hotel @ 7:45pm

March

1st The History of Silloth a slideshow by Holme St. Cuthbert History Group in the Golf Hotel @ 7pm, entry £1

1st Skinburness Residents Association committee meeting in Golf Hotel @ 7:30pm

4th Trinity Methodist Morning Service @ 10:30am
Rev. J Millard CS

5th Solway Woodcarvers in Silloth Community Hall from 7pm to 9:30pm, cost £3 per session. All welcome

6th Tea Dance in Solway Community Technology College from 1:45pm to 3:45pm
contact Mary Pigg on 31553

8th Trinity Methodist Church Anniversary Pop-in @ 11:45am

10th Silloth Football Club fundraiser - Horse Racing from 7pm to 9pm in the Criffel Inn, Silloth - all welcome

11th Trinity Methodist Morning Church Anniversary @ 10:30am

12th Solway Woodcarvers in Silloth Community Hall from 7pm to 9:30pm, cost £3 per session. All welcome

14th Waver Wine Circle White Wine (dry) Competition Blencogo Village Hall @ 7:30pm

16th Solway Musical Evening in Christ Church Hall, varied programme, refreshments, entry £3

18th Trinity Methodist Morning Service @ 10:30am
Mrs D Wallis

Silloth Tots & Toddlers

Silloth Tots & Toddlers meet in Christ Church Hall, Silloth and is open to all children aged from 0 to 4.

Sessions are on:
Wed: 9:30pm to 11am
and
Fridays: 9:30am to 11am

Entry is £1 per family and this includes refreshments

All Welcome
Call in for a friendly chat

Copy date for the April issue
If your organisation has an event to promote or you have something to say, please note that the next copy date is:
7th March 2007

March cont'd

19th Solway Woodcarvers in Silloth Community Hall from 7pm to 9:30pm, cost £3 per session. All welcome

20th Tea Dance in Solway Community Technology College from 1:45pm to 3:45pm
contact Mary Pigg on 31553

24th Wigton Choral Society in the Sands Centre, Carlisle @ 7:30pm, Cumbria Rural Choirs, tel: 01228 625222

25th Trinity Methodist Circuit Service Wigton Church
Captain R Murphy

April

2nd Solway Woodcarvers in Silloth Community Hall from 7pm to 9:30pm, cost £3 per session. All welcome

3rd Tea Dance in Solway Community Technology College from 1:45pm to 3:45pm
contact Mary Pigg on 31553

7th Easter Saturday Coffee Morning in Christ Church Hall, 10am to 12 noon stalls, competitions, raffle

7th Silloth Music & Beer Festival 07
Battle of the Bands first heat in Silloth Rugby Club, contact: Stephen Hart on: 016973 31517

9th Solway Woodcarvers in Silloth Community Hall from 7pm to 9:30pm, cost £3 per session. All welcome

11th Waver Wine Circle Annual General Meeting Blencogo Village Hall @ 7:30pm

16th Solway Woodcarvers in Silloth Community Hall from 7pm to 9:30pm, cost £3 per session. All welcome

17th Tea Dance in Solway Community Technology College from 1:45pm to 3:45pm
contact Mary Pigg on 31553

23rd Solway Woodcarvers in Silloth Community Hall from 7pm to 9:30pm, cost £3 per session. All welcome

30th Solway Woodcarvers in Silloth Community Hall from 7pm to 9:30pm, cost £3 per session. All welcome

May

1st Tea Dance in Solway Community Technology College from 1:45pm to 3:45pm
contact Mary Pigg on 31553

5th Silloth Music & Beer Festival 07
Battle of the Bands second heat in Silloth Rugby Club, contact: Stephen Hart on: 016973 31517

15th Tea Dance in Solway Community Technology College from 1:45pm to 3:45pm
contact Mary Pigg on 31553

15th Wigton Theatre Club Blue Remembered Hills, at 7:30pm tickets £5 / £4.50, tel: 016973 44620

16th Wigton Theatre Club Blue Remembered Hills, at 7:30pm tickets £5 / £4.50, tel: 016973 44620

17th Wigton Theatre Club Blue Remembered Hills, at 7:30pm tickets £5 / £4.50, tel: 016973 44620

18th Wigton Theatre Club Blue Remembered Hills, at 7:30pm tickets £5 / £4.50, tel: 016973 44620

19th Wigton Theatre Club Blue Remembered Hills, at 7:30pm tickets £5 / £4.50, tel: 016973 44620

29th Tea Dance in Solway Community Technology College from 1:45pm to 3:45pm
contact Mary Pigg on 31553

Check out SolwayBuzz.co.uk for photos of local events

Errors do occur in Dates for the Diary
Please check before attending an event

Silloth Lifeboat Station Shop Opening Hours

The shop has now closed and will re-open at Easter

Thank you to all our customers for your support during the year and we look forward to seeing you again in 2007

June

16th Wigton Choral Society in Nelson Thomlinson School, Wigton @ 7:30pm
In The Mood For Summer
Tickets £8/£2 from Croft House Cards or 01228 710755

23rd Ladies Fellowship Coffee Morning in Christ Church Hall, 10am to 12 noon

July

28th Kite Festival on Silloth Green

29th Kite Festival on Silloth Green

September

6th Silloth Music & Beer Festival on Silloth Green

7th Silloth Music & Beer Festival on Silloth Green

8th RAFA Leek Club Show

8th Silloth Music & Beer Festival on Silloth Green

9th Silloth Music & Beer Festival on Silloth Green

Do you have an event in the area bounded by Abbeytown, Mawbray, Silloth, Skinburness, if so please let us know.

Silloth & District Pensioners
Calling All Whist & Domino Players
Join us in the Recreation Hall
Eden St Playing Fields

Domino’s Monday’s at 7:30pm
Whist Drives Tuesday’s at 2pm and Thursday’s at 7:30pm
A Welcome awaits you!
Don’t be Shy, just come and play the games

Please note that articles, letters and virtually all content of the Solway Buzz are contributed by YOU, the local community. The Editor reserves the right to control what is included, however, no responsibility whatsoever for the content of the Solway Buzz can be accepted by the Editor, or the Publishers.

Refuse Collection

For Crunch service dates and locations or to arrange collection of bulky items
Tel: 01900 702800.

Bee a Masthead Winner

Carlisle Embroidery are generously donating a Solway Buzz embroidered sports shirt to the winner. This is in addition to the usual Winners Certificate and £5 Gift Voucher. So, come on kids, get drawing, the Buzz is always looking for more imaginative bees and yours might be the next winner. Send them in to the address on this page and a quality Solway Buzz embroidered sports shirt from Carlisle Embroidery could be yours.



Masthead Bee Winner

This month the winner is Nicki Graham from Holm Cultram Abbey School with a bee called “Poser Bee”. Well done Nicki!

Causewayhead WI Litter Pickers

In an attempt to work off an excess of Christmas pudding and mince pies, a litter pick was organised for the Wednesday after Christmas Day.

We were joined by family and friends with ages ranging from two to mid-seventies, plus three dogs, ages uncertain but very enthusiastic.

We were blessed with a cold, clear, calm day with a little sunshine. Armed with litter pickers, bin sacks and sturdy gloves, and wearing an amazing selection of seasonal headgear fifteen of us set off along West Beach. Two sledges and

a recycled fish box were used to pull some of the heavier items back to the car park. Although 17 bin sacks, plus oil drums, part of an armchair, a bicycle, old tyres, and a quantity of rope were collected. Allerdale Council removed it all from the car park.

After a group photograph, coffee and Christmas cake was enjoyed by all.

Causewayhead WI have now been picking up litter from West Beach since mid-January 2006. In that time, 170 sacks of litter have been collected. What does this tell us about the state of our beautiful beaches?

Abbeytown Flower Club

Report by: Gladys Temple

The Annual New Year Dinner was held at The New Inn Blencogo.

Members and friends all enjoyed a pleasant evening with a delightful meal followed by a Quiz naming Trees, a photographic Quiz and several parcels where the members had to guess the contents.

Ruth Pinguey was thanked for arranging the evening.

Wanted: Old Mobile Phones

Report by: Becky Molyneux

Silloth Tots N Toddlers group are collecting any old mobile phone and chargers in order to raise funds for the group.

To donate, please contact Beckie Molyneux on: 016973 31925, or drop them of at the Christ Church hall on a Wednesday or Friday morning during their sessions.

Abbeytown Mothers Union

Report by: Gladys Temple

The January Meeting of the Abbeytown Mothers Union began with a Service led by Rev David Tembey.

This was followed by the AGM when the new Branch Leader was elected. As Maureen Gibson had only been Branch Leader for the last four years she was re-elected for a further three years. Noeline Foster was re-elected Secretary and Freda Garner as Treasurer and raffle organizer, Brenda Sim agreed to be the new Literature Representative as Elsie Foster wished to resign, and she also left the Committee. The rest of the Committee was re-elected with the addition of Mary Mattinson in place of Elsie. Noeline gave a comprehensive report of all the activities we had taken part in over the last year and Freda gave a healthy financial report.

Maureen thanked everyone for their prayers and support over what had been a very difficult few months but we look forward to getting the new roof back on the Abbey this year and celebrating the return of worshipping there. Noeline then read a record of the November Meeting and the making of a new M.U. Banner was discussed.

St. Mary's M.U. Wigton have invited us to their Meeting on 15th

Arthritis Support Group

Edna Marper welcomed everyone to Loveday House and introduced Lyn Hardie, Rural Community Development Officer.

She co-ordinates the various groups which provide any kind of support for people over 55 in the Wigton and Solway Plain areas. This is to increase local awareness of existing services and how to get in touch with them, identify any gaps in services, and set up a database of support information. This is available for older people, community and statutory groups. She is also setting up Community Information Centres in local venues around Silloth and Wigton. There is one on the 1st Wednesday of each month at The Wheatsheaf Inn, Abbeytown that is well attended as lunch is

provided at £2.50.

There is also an Age Concern Handyman available to do all those small jobs elderly people find difficult. Details are available at the Age Concern Drop In Centre every Tuesday or Thursday 9:30 to 11am.

Lyn also gave out diaries of the various groups available so that members would know where the clubs are, what they are doing when and where. Lots of people entered the discussions as to what is needed and where so Lyn went away with lots of ideas.

Edna thanked her for all the useful information we had learned. Anne Graham gave out draw tickets and reminded Members that the £6 subs were needed at the AGM next month. Mary Thompson and Francis Green served the refreshments while Edna read out various articles about the research going on into Arthritis.

Mary Thompson was the raffle winner before the members settled down to listen to the relaxation tape before the end of the meeting.

March. A letter was read from Wendy Dyer the New Deanery Leader and we were pleased to hear she is taking on this role. Lyn Tembey will be commissioned as M.U. President of York Province on 24th April so names were taken to be at York Minster that day.

Elsie Foster and Muriel Studholme served refreshments while Freda collected the Annual Subs. The next Meeting will be on February 26th when Lyn Hardie will be our Speaker on Age Concern, any visitors would be very welcome.

Free Holiday Guides

Report by: Pauline Park

Now arriving at the Tourist Information and Discovery Centre in Silloth - free United Kingdom 2007 Holiday Guides.

If you are expecting friends or relatives and do not have the space to accommodate them, then call in for the free 2007 Western Lake District Guide which offers accommodation over a wide local area including Silloth. At the same time ask for the free 2007 local attractions guide. If you have relatives living away that would like to be sent a copy of the local guide then let us know and we will send one out to them.

If you are organising an event then please let us have the details. We will include it in our desk top events guide, display any posters and include in events fliers. We will also post out to people interested in 'What's On' in Silloth and surrounding areas.

Our telephone number is: 016973 31944.

Silloth CDC

After extensive work on The Silloth Primary School's 'New Build' project, the new Community Development Centre is now ready to open its doors to the public again.

To celebrate this we will host an Open Evening and are inviting everyone interested in finding out more, to join us. In the past we have run Computer courses, Watercolours, Indian Head Massage, First Aid, Food Hygiene and

many more. We will be offering: Twice weekly Drop In sessions, On-line initial assessments in Numeracy and Literacy, I.T. skills assessment, First Time On-Line Taster sessions, and Intro to I.T. (Word & Internet) short courses. This will take place on Monday 5th March, from 7-9pm.

Also, I would like to draw your attention to a new Watercolours class, which will start March 5th at 6pm until 8:30pm in the school hall. If you would like to book a place, please ring the CDC on 016973 33011 and leave a message.

The Bank Mill Experience

Bill & Staff welcome you to the nursery



The Dunes Coffee House

Take a trip along the Solway Coast and visit Bank Mill. From a full hot meal, to coffee & scones, all home baked or cooked on the premises.

Pensioner's specials on Monday & Tuesday. Try our mid-week specials, or Friday for fish dishes.



The Ducks in the Nature Reserve are now showing their winter colours.



Nursery

Come and see our exciting new ranges of Spring Plants.



Nursery open daily 9am - 5pm
The Dunes open 10am - 4:30pm
Last entry to Nature Reserve one hour before closing

Tel: 01900 881340

Cumbria's Best Kept Gardening Secret

Midway between Beckfoot & Mawbray on the Maryport Road

Secure Indoor Caravan Storage CaSSOA Gold Award Site

Ideal for Caravans, Motor homes, Boats, Classic Cars & Trailers. Alarmed indoor facility with secure external collection/drop-off compound.

Storage in clean, dry conditions.
Flexible drop-off and collection times.
Competitive rates and introductory special offers.
Less than 7 miles from Carlisle.

Go to: croftonstorage.co.uk or tel: 016973 43615
or email us on: sales@croftonstorage.co.uk

Absolute Treatment Body & Mind Treatments

Physiotherapy

for effective treatment of

Back Problems
Sciatica
Trapped Nerves
Frozen Shoulder
Aches & Pains
Specialists in Deep Tissue
Massage & Ultrasound

Hypnotherapy

expert help to

Increase Motivation
Lose Weight
Stop Smoking
Increase Confidence
Overcome Phobias
Increase Sports
Performance

Tel: 016973 32804 ~ Mobile: 07732 929781
W Shepherd M.I.R.M.T., M.I.P.T.I., D.HYP.

Aqua Dry

Carpet and upholstery cleaner

Truckmount system totally self contained

Domestic and commercial work undertaken

Static caravan interior cleaning specialist

Remarkable results on pubs and club carpets and dry for opening

Flood pump out

Free survey with no obligation

www.aquadrycarlisle.co.uk

Tel: 01228 710698
Mob: 07914 984114

ALCOHOLICS ANONYMOUS

Do you, or someone you know have a drink problem?

There is now a way out

Come to:

Greenrow Church
(opp Stanwix Park)
every Wed 7pm-9pm

Call our helpline:
0845 769 7555

Christingle at Christ Church



Report by: Alan Byrom

The Christingle service is held each year at Christ Church on the Sunday nearest to Candlemas. That is the day when we remember Jesus the baby being brought to the Temple in Jerusalem. The elderly Jewish man Simeon proclaims the child to be ‘a light for revelation’ to all people. Christingle means Christ-light and we celebrate by means of christingles which were made this year by the Brownies and the parents in the Tots and Toddlers group.

The christingles are oranges, to represent the world, with red ribbon tied round them, to represent the blood of Christ who died for the world. The orange has cocktail sticks stuck into



Plain Team of churches, organised and led by Rev Sharon Swain, the Team Rector, based at Langrigg. They played the music for the songs in the service. Mothers from the Tots and Toddlers group led the prayers and read from the Bible.

At the end of the service, the christingles were presented to the Brownies, Rainbows and the other children and the candles lit from a central candle that had been lit at the start of the service. It was an informal family service that was much enjoyed and was followed by refreshments.



it, with fruits and sweets on them, to show God’s provision for the world. On top of the orange is placed a candle which stands for the light of Christ over the world.

This year, we welcomed the Music Group from the Solway

Robson Accountancy Services

Member of the Association of Accounting Technicians

Noble House, Abbeytown, Wigton, CA7 4RL

Telephone: 016973 61752

Mark Mobile: 07796 274 369

Rachel Mobile: 07786 365 854

Affordable and personal accountancy and book-keeping services throughout Cumbria.

Specialising in small business’ Tax Returns, Accounts, and VAT.

Little Acre Care Home



82 Skinburness Road

Excellent Care for the Elderly

SINGLE EN-SUITE ROOMS

For further details contact:
Sarah Betsworth – 016973 32105

State Bitter in Parliament



Carlisle State Bitter, which is brewed in Silloth at Derwent Brewery was on sale in the Strangers’ Bar in the House of Commons recently.

This is the second time the beer has been welcomed in Westminster, it was previously a guest beer in 2003. Normally guest beers last for a couple of weeks but our ever popular pint usually only lasts a few days with discerning MP’s and their guests.

Carlisle State Bitter was promoted by our MP, Tony Cunningham, who has always appreciated it’s high quality.



Parachute Bee
by Kieran Brooks aged 8 from Holm Cultram Abbey School



**Pizzas
Burgers & Kebabs**

Mon	5pm to 11pm
Tue	5pm to 11pm
Wed	5pm to 11pm
Thu	5pm to 11pm
Fri	5pm to 11pm
Sat	5pm to 11pm
Sun	5pm to 11pm

Delivery Service Available
from 5pm until 11pm

5 Eden Street, Silloth
016973 33032

JayBee Blake Ltd

open 7 days a week

Off-Licence

Hardware • Key Cutting

Carpet Cleaner Hire • Gifts

Wallpaper Stripper Hire • & much, more

Tel: 016973 31245

Opening Soon

JayBee's Bargain Basement

1,000's of New Lines

PARAMOUNT AMUSEMENTS

food served all day

Bingo

Refreshments • Gifts

Fun for all the Family

Indoor & Outdoor Kids Go-Carts

The Green • Silloth • Tel: 016973 31131

RNLI visit Allonby School



L - R Darren Irwin, Stephen Henderson, Eddy Studholme & Stephen Wright

Report by: Lesley Hope

Four members of Silloth Lifeboat Crew came to Allonby Primary School on SOS Day, 26th January - where they gave an interesting talk

and display, ending with a question and answer session with the children.

We raised £111.30 for the Silloth Appeal by taking donations for coffee and cake and the children covered the

RNLI flag and pictures of trainers in coppers in addition to them paying a £1 each to wear trainers for the day.

Thank You to everyone who supported the event.

Problems at Cemeteries

Allerdale Borough Council is asking people who visit the borough's cemeteries for suggestions about how to tackle the problem of damage caused by vehicles driving into the cemetery grounds.

With more people using vehicles to drive into the cemeteries rather than walk, there is increasingly more damage to the path edges, roads, corners and graves. Robert Deacon, Allerdale Borough Council's Bereavement Services Officer, said: "There have been occasions when vehicles have blocked the entrances to the cemeteries during funerals, blocking the exit route of the hearse and limousine carrying the family mourners. I have witnessed one vehicle driving past a parked vehicle and running over numerous graves. This is unacceptable. The cemeteries were never

designed for regular vehicular access - just for funeral and cemetery work access. If we lock the gates disabled people may be discriminated against and that wouldn't be acceptable, although the pedestrian access is never closed. In the past we have tried leaving the gates closed for disabled access only, but people leave the gates open whilst they are in the cemeteries allowing others in. We're at a loss for a solution. We don't want to make it difficult for people visiting the graves of loved ones, but we do need to take steps to prevent damage to the cemeteries. If anyone has a helpful suggestion, then we'd welcome the feedback."

If visitors to the cemetery can suggest how to solve the problem, please contact the Bereavement Services team on 01900 702620 or email bereavement services@allerdale.gov.uk.

Anne Keely Smith by Chelsea Louise Evans aged 8 from St. Marys Catholic School, Ulverston

Rocket Bee by Bradley Whitfield aged 9 from Silloth Primary School

Police Report

Report by: Inspector Dave Barr, North Allerdale Local Policing Team

North Allerdale Local Policing Team have been notified that they are to have a third Police Community Support Officer working in Silloth.

The first two officers commenced working in Wigton and Aspatria this month. A Police Community Support Officers role is to be the eyes and ears of the Police. They do this by carrying out high visibility foot patrols in their area. They also attend meetings of local groups and organizations; to build up their contacts with the community. PCSO's wear a uniform with slight differences to Police Constables. They do carry the same radios, so that they are in constant contact with the police control rooms and their colleagues.

Silloth's very own PCSO, will be working from the end of March.

YOU CAN MAKE A DIFFERENCE!

SILLOTH Conservatives

Join us at
The Golf Hotel
at 7.30pm
on Tuesday, 6th March
to discuss the forthcoming

Allerdale Borough Council Elections.

LET'S MAKE A DIFFERENCE – TOGETHER!



P. Scott

The Complete Furnishers

Single Beds from £49
Double Beds from £79
Sofas from £199
Three Piece Suites from £299

Interest Free Credit
Immediate Delivery

Phone: 016973 31224

STANWIX PARK HOLIDAY CENTRE



Full/Part Time Receptionist
25 to 35 hours per week

You will be a Team Player capable of general office duties, have excellent telephone skills, be computer literate and have a pleasant attitude.

A flexible approach to working hours is required, to include Bank Holidays, Weekends and Evenings. Full training will be given.

For Application Forms Contact: Lynn Stanwix
Or alternatively apply in writing including C.V. and all relevant details and references, marked for my attention

STANWIX PARK HOLIDAY CENTRE, Greenrow, Silloth, CA7 4JH
Tel: 016973 32666 www.stanwix.com

Lomas Fishmongers



Solway Shrimps

Poultry
Cumberland Sausage
Made in Cumbria Products
Local Vegetables
Eggs

Station Rd Ind Est, Silloth
016973 31334

LOWTHER ARMS

Mawbray
01900 881337

just off the Silloth to
Maryport Coast Road



Newly Re-Opened
Enjoy a Warm Welcome &
Old Fashioned Hospitality with
Cask Ales & Fine Wines in front of
our log fire, from noon to midnight

Local History: Thomas Reay, Agricultural Engineers, Abbeytown

Research by: Thomas Williamson, Abbeytown and by Ronnie Markley

This is the story of Thomas Reay, a brilliant engineer and businessman, who was able to harness the advances of the Industrial Revolution to establish an agricultural machinery manufacturing base at the village of Abbeytown in Cumbria.

The firm became so much part of the agricultural scene that the machines it produced were affectionately known as “Tommy Reays”, in much the same way that binder twine became colloquially known as “John Robert”, referring to John Robert Holliday, the local steam thrasher man.

Thomas Reay was born in 1830 in Holme Cultram parish. His parents were John and Sarah Reay. John Reay was a mason. On their headstone, John is designated “John Reay of Raby” and he died aged 76 years, while Sarah lived another 9 years dying in 1881 aged 85 years. Thomas was married at the parish church in 1858 to Rachel Parkin who had been born at Ireby but, at the time of her marriage, was living at Abbeytown. Thomas was living at Raby at this time, and described as a “wheelwright”.

Thomas Reay had a brother, John, who was living at Abbeytown in 1871 although by 1881 he was at Railway Terrace, Aspatria and described as millwright employing 4 men and 2 boys - so in a substantial way of business. His (and Thomas’s) mother is recorded as living with him. John had a son Isaac Reay, and Ronnie Markley remembers that the farm machinery business carried on at Aspatria was run by a Isaac Reay - almost certainly Thomas Reay’s nephew. This later became the Hillary Agricultural Machinery Firm.

The exact date the business was established is not known but is probably about 1858. There is a date stone above Thomas Reay’s residence (“Laurel House”) and adjoining the works site, dated 1860, so building work probably started



shortly before this. It is known that the land was bought from the railway company. The Silloth to Carlisle line was opened in 1856 and there is a dedicated siding that ran directly to the works. Thomas Reay had exercised considerable foresight in selecting this site that gave him access to the newly expanding rail network. At that time the use of rail was the only economic way in which raw materials, and finished goods could be transported.

There are a number of local records with references to the works. The OS map of 1865 describes the site as “Oilcake Mills” and the Methodist Chapel next door is also shown. The chapel was built in 1859 at the cost of £300 and it is thought that Thomas Reay may have donated the site on which it was built. The main building is three story and to the west of the site. There was no water power available here and so the mill would be driven by a steam engine. On early photographs taken from the roof of the church a substantial chimney can be seen, and Ronnie Markley can remember seeing an old bill from a steeplejack covering maintenance work done on the chimney, so this would be the steam engine chimney. There was a joiner’s shop where the patterns and moulds were made, a smithy including a lathe, together with a stable used to accommodate horses that had been used to transport corn that had been brought for milling.

Some of the advertising material produced by Thomas Reay has survived and gives an insight into his main lines of production and how they developed. It is interesting to note that there is a reference to the “Lion” brand on the title page and that Bamford also produced a

“Lion” horse rake in 1897. While the use of the same name may be coincidence, it seems more likely that the design and pattern would be produced by an inventor and then licensed or sold to others.

The mainstay of production was the Mowing Machine and we see from the description that the model depicted supersedes an earlier “Lion” model as Mr Reay extols the virtues of the improved version. This machine could also be adapted so that it would cut cereals as well as hay and collect the material into bundles to facilitate tying into sheaves. Mr Reay makes much of the fact that the cost of raw materials has reduced and that there is further mechanisation within the works to enable the item to be offered at “the low price of £15 10s as a mower and £17 as a reaper and mower combined”.

A corn crusher (£9 10s) and hay rake were also produced. The advent of a corn crusher would eventually sound the death toll for Reay’s corn milling business as farmers became able to crush their own corn using these (originally) horse driven machines.

Thomas and Rachel Reay had one daughter Sarah Ann Reay who had been born at Ireby in 1864. She married Thomas Rudd Creighton and so became Sarah Ann Creighton. The marriage took place in 1890 when she was 26. She lived to the age of 42 years and died in 1905.

Thomas Reay died aged 65 years and Thomas Rudd and his daughter Sarah Ann Creighton and son-in-law Thomas Rudd Creighton installed a church window in the Abbey in his memory. There are two other windows in the Abbey dedicated to, and provided by, the Reay family - one dedicated to Sarah Ann Creighton and the other to Sarah’s

mother Rachel.

The business was taken over by Ronnie Markley’s Grandfather, William Wilson around 1919 and continued by Ronnie’s father, James (Jim around 1919 and then continued into a third generation by Ronnie Markley and his brother Dick Markley who joined the firm In the 1950’s, after war service. The Markley family originated from Crew. Ronnie and Dick’s grandfather was a millwright, running the water driven mill at Waverbridge and a mill at Greenspot, near Kirkbride. Their father was an engineer by profession. William Wilson retired about 1926 and Jim Markley about 1960.

Ronnie remembers the plant being run by a Ruston Hornsby Gas Engine (later replaced with a twin cylinder Lister Diesel Engine). This would drive machinery by means of shafts and belt drives, and also produced electricity for lighting. There must have been a line extending as far as the town corner where there was an electric lamp that was switched on (there were two switches) to light up the road to the station for the convenience of early morning and late evening travellers. There was a facility to store electricity in a battery room full of glass jars filled with distilled water and acid, and into which the electric cells were lowered.

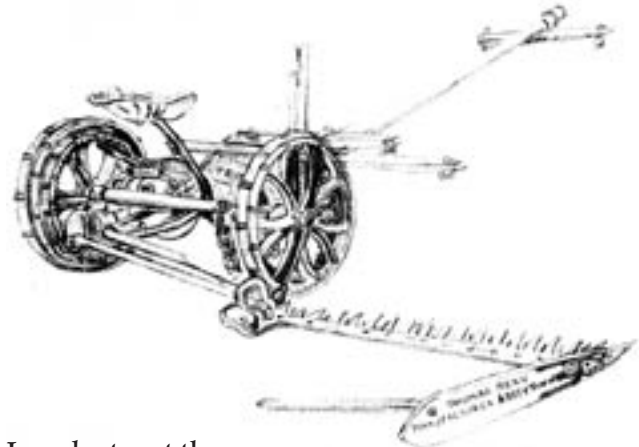
Around this time the stables were replaced with houses, this row being now known as Western Terrace.

While casting moulds continued to be made at Abbeytown the actual casting was undertaken by Porters of Denton Holme, Carlisle (later Porter Engineering) and sent to Abbeytown by rail where they were planed and dressed. All the making of the brass bushes and assembly was completed at the works. At one time the works were so busy that apprentices would be still finishing the painting when the implements would be standing on rail wagons ready to be sent off.

As time moved on it became difficult to manufacture in

competition with national makers and this side of the business was wound down with the last mowing machine being delivered to a Mr Forsyth, Hallburn, Longtown in 1939. Bob Mattinson remembers an old Singer car with a small trailer being used for delivery. This would be done in the evening so there was a better chance of the farmer being at home, together with his chequebook!

The milling part of the plant was dispensed with early in the war years and this was replaced with extra workshop space. This was badly needed because the works became officially War Agricultural (War-ag) designated and, with new machinery being largely unavailable, repair work flooded in. Some Fordston Tractors were available during the War years and these came with steel “spade lugs” instead of tyres (there being a great rubber shortage during the war).



In order to get them transported without too much damage to the roads they were equipped with a metal rim on the outside of the wheels. Ronnie remembers one being delivered to Mr Todd of The Close, Silloth.

As more money and materials became available after the war, and farming became more mechanised, additional work became available, including the installation of stationery engines to run power plants, in-barn threshers, crushers and milking machines. The Company also installed milking machines having the agency for Gascoigne and another firm Melott where the milking machine was suspended from the cow’s back.

Reays also sold a Hornsby Binder which was a rather smaller version of the McCormick binder.

The company

obtained a number of dealerships and sold on behalf of Bamfords; David Brown, Massey Harris and Ferguson - the latter two covering Cumberland and Westmorland. Also sold were pike cages and pike boggies, “Selopian” muck spreaders and hay making equipment. While Cumbrian fields were originally rather small for the use of Combine Harvesters eventually Ronnie was able to buy second hand ones from Hampshire that Cumbrian farmers were able to afford, and these would be transported by Billy Dockery.

At one stage the business employed between 18 and 20 staff. This included three salesmen. Office staff included Lillian Bell, Muriel Davison and Ann Proudlock, and “near lifetime” mechanics were John Watson, Chatsworth Square, and brothers Johnny and Albert Watson from

Seaville.

As well as selling from Abbeytown the company also had depots at Crosby Street, Carlisle, the Auction Mart at Longtown, and the Crown and Mitre yard at Wigton.

In 1958 a new workshop was built on the east side of the site and in 1960 the whole of the yard was covered in to form a car and agricultural equipment showroom with a dealership being obtained from The British Motor Corporation (BMC), now Rover Group.

When Ronnie and Dick retired, and Ronnie’s son Tony decided to expand his haulage business, the premises were sold to Roland Hill, Parsonby, Aspatria, with planning permission for development, although they still stand undeveloped and empty today.

Open Day at Langrigg Vicarage



Report by: Peter Streatfield

Open Day at the Vicarage, Langrigg

On Saturday, 3rd February, it was all go at the Vicarage in Langrigg! The Solway Plain Team Rector, the Rev Sharon Swain, had decided that she and her husband, Adrian, would have an 'Open Day' in their home. This day was a social occasion for them and others across the Solway Plain to meet one another and discover what was happening in the six parishes of Silloth & Causewayhead, Abbeytown, Holm St Cuthbert, Waverton, Bromfield and Westnewton. Inviting people to an open day meant that there would

have to be refreshments for the steady stream of people that came throughout the day so the Rector, along with the volunteers, were kept busy plying cups of tea or coffee and cakes and biscuits (and ploughman lunches at midday)!

It was wonderful to see so many people from all over the area come together and enjoy each other's company and catch up on the latest news. A number of people brought things to put on the raffle table and the bring and buy sales table which also added to the interest. There were even sales of potatoes and turnips straight from the farm!

Thank you to those who helped, and who

attended the Open Day at the Vicarage in Langrigg. Over £300 was raised and, since the Bishops of the Church of England have asked everybody to support the deprived in the inner cities the Rector decided to donate this to the Church Urban Fund, recently launched by the Archbishop of York, John Sentamu.

Gincase Exhibition



Helen Herbert, amateur photographer, has produced an exquisite collection of images for her exhibition in the Gincase Gallery, inspired by the Lake District and her love of walking.

Self-taught and working mainly in monochrome using a medium format camera, Helen's particular interest in landscape photography is captured in her interpretation of local scenes and still life compositions.

The exhibition is on until 2nd March.

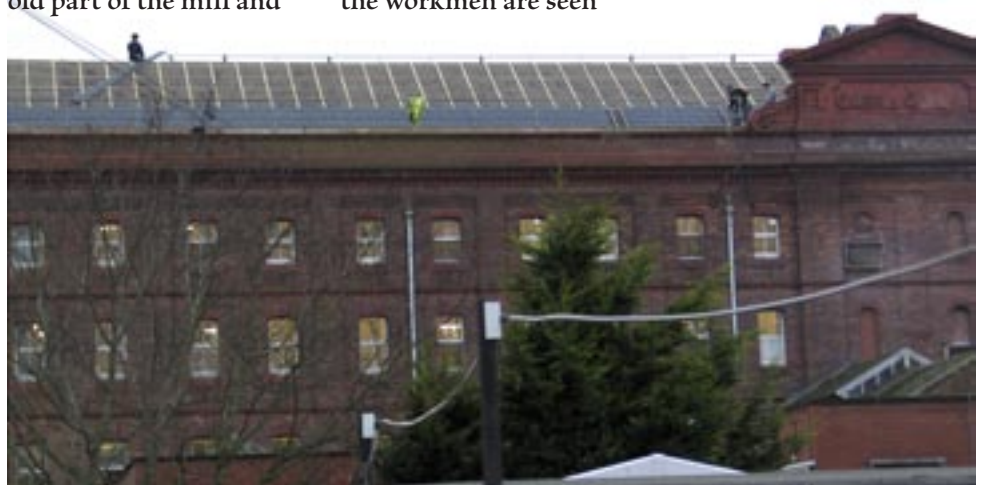
Repairs to Carr's Mill Roof



Having applied for permission to remove the original slates on the old part of the mill and

reinstate with imitation metal panels (which look very authentic) the workmen are seen

working during the wild and wet weather we had in January.



4 Turbines at Park Head Farm, Silloth

Have Your Say

at a

PUBLIC MEETING

in the **Golf Hotel**

on

Monday 26th February

at 7pm



Silloth on Solway Action Committee



Serena Williams Bee
by
Kirsty Girdler
aged 9
from
Holm Cultram Abbey School

Baby Bee
by
Mary Williamson
aged 5
from
Holm Cultram Abbey School

STANWIX PARK
www.stanwix.com



Leisure Centre Attractions
include Our 4 Lane 10 Pin
Bowling Centre:

ASTRO BOWL
Officially Sanctioned

£2.50 Before 6pm.
£3 After 6pm, All Day Sunday
& Bank Holidays

MEMBERSHIPS AVAILABLE

Adult (16-60 years): £35 per month
Children (5-15 years): £10 per month
(with full paying adult).
Senior Citizens (over 60): £18 per month

**Indoor &
Outdoor Pools**

**Gym, Sauna, Steam Room,
Spa Pool & Vertical Tanner**

DAY PASSES
ADULT: £6
CHILDREN £5

★ **TEN VISIT LEISURE VOUCHERS** ★
£35 - ONLY £3.50 A VISIT!
PARTIES WELCOME

Children from £6.75
Adults from £11.00

Call Now For Details
016973 32666

Male Voice Choir in Abbeytown



Report by: Susan Clow

The Silloth and Causewayhead male voice choir provided Abbeytown Methodist Chapel with entertainment for their anniversary service on Wednesday 24th. January.

Led by their pianist, Mr Bill Hall (Wigton) and compared by Mr Lawrence Marshall, they gave a recital of

twenty songs and hymns. There was a capacity congregation who were very appreciative of the wonderful performance.

Mrs Susan Clow gave the vote of thanks which was followed by tea and biscuits provided by Mrs Sheila Bell and her helpers. A total of £161 was raised for chapel funds.

Sincere thanks to all those who attended.



Photos by Bill & Winifred Allan



Teaching Bee by Samantha Casson aged 8 from Holme St. Cuthbert School

Sk8er Bee by Lee Johnson aged 8 from Silloth Primary School



PERSONAL LOANS

With collection services available to Tenants and Householders
£200 – £750

For full written details without obligation, write or phone:
S.D. Taylor Ltd
Bayliss Distribution Centre
Glasgow Road
Gretna, DG16 5JN
01461 338509
Local Rep: 07795 658274

Silloth on Solway Community Shop

- * Local people working for local causes *
- * All proceeds go back into the community *
- * **Please continue donating** *
- * Collection can be arranged *

Contact: Maureen on 016973 31636

S.O.S.C.S.

Open every day
10am to 4pm
Tel: **32452**



S.O.S.C.S.
12 Criffel Street
Silloth



Happybee Family
by
Emily Beth Harrison
aged 10
from
Holm Cultram Abbey School

MANA CREDIT UNION



A Community Savings and Loans Scheme

New Collection point opening at Silloth Community Hall
on Wednesday September 27th, 12:30pm - 2:30pm

- Savings: as little as £1 per week, local collection points, or direct debit.
- Benefits: free life insurance on all loans.
- Borrowing: save regularly for 8 weeks for 1% p.c.m interest rate loans on reducing balance

Savings Per Week	Total Saved	Loan Amount	52 weekly payments	Interest payable	Total Payable
£10 for 8 weeks	£80	£160	£3.28	£10.29	£170.29
£15 for 8 weeks	£120	£220	£4.51	£14.16	£234.16

The above are example amounts

Where to find us?

- Wigton market: Tuesdays 9:30am - 2pm
- Maryport: Selby Terrace, Wednesdays 2pm - 3pm
- Maryport: JSL computers, Wood St, Maryport
Thursdays 1pm - 3pm and Fridays 10:30pm - 3 pm

**Silloth: Community Hall,
Wednesdays, 12:30pm - 2:30pm**

Tel: **01900 816111**

Email: manacredit@hotmail.co.uk



Silloth Master Quiz

Report by: Tim Barker

For the second year running a team from the RNLI (plus a guest from Whitehaven) won the Silloth Master Quiz in Christ Church hall on January 26th.

As usual Tim Barker set the questions and each group of answers (though NOT the questions) fitted a theme. Eleven teams took part including three from Causewayhead Womens Institute whose "Calendar Girls 2" got the wooden spoon.

Refreshments were provided by ladies from Christ Church, the raffle was well supported and a lot of fun was had all round.

It was a closely-run affair and the RNLI beat Silloth Methodists by a single point, 121-120 while Silloth Rotary Club were a gallant third with 118.

These three teams are beginning to dominate the event so we look for some fresh faces next year.

Get in training now!

Photos clockwise from top right:
Some of the teams who took part
The team from Silloth Methodists
The Winners from Silloth RNLI



SILLOTH RUGBY CLUB

Available for Private Functions

- Birthday Parties •
- Engagements •
- Weddings • Christenings
- Fund-raising Dances •

Comfortable, modern Lounge Bar
Suitable for small or large parties

Telephone Christine on:

016973 32299

For further details or to book

Photography by Peter

Memories of Special Occasions
Birthdays, Anniversaries, Parties

Baby, Child or Portrait pictures
taken anywhere you want

What's the deal?

Peter will come and take the photographs you want. You will receive a selection of 6"x 4" photos to choose from and keep, plus a 10" x 8" print of your choice, all for only £59

To find out more, contact:

Peter McRobert, Barn Cottage, Skinburness
Wigton, CA7 4RA, tel: 016973 32180

Hair Zone 4U

Even celebs can have bad hair days. With all their money and top stylists on hand, they still sometimes get it wrong.

Extensions are the celebs must have accessory and they should be yours as well. For under £60 you can transform your look in minutes and we will fit them for free.

Here at the salon we are still waiting for the first male client to ask for the Russell Brand look, although there are a couple of guys in Silloth who have the Russell look without trying. Whatever you want you can rely on everyone at Peter Josef to ensure you

never have a bad hair day.

PS Could the Shilpa glam look be in for summer? Watch this space.

Dawn, Sammy, & Carly at Peter Josef

**HARDWOOD
LOGS
For Sale**
**Trailer Loads
or
Net Sacks**

Contact:
Paul Kendall
07795 421976

Mark Hansford Computer Services

Repairs
Upgrades
New Computers
Software
Wired & Wireless
Home & Office
Networking



We Have The Solutions!

Call : Mark on 016973 32089

TEENAGERS

CARLY

will

Cut and

Restyle

for

1/2 Price

all March

Bring this advertisement to receive discount

Peter Josef

late night
thursday
OAP's
tue / wed

27 Eden Street, Silloth-on-Solway, 016973 31333

Out of the Blue at the NEW INN

Our friendly village Pub is a family business, our new Restaurant specialises in fish and local produce which is all home cooked

New Inn, Blencogo, tel: 016973 61091
just off the Wigton to Silloth road

Local Tradesmen

Building Services

Elite Joiners & Builders

"For all your building needs"

Full House Builds
Timber Frame House Kit Erections
House Extensions
Renovations
Full Barn and Loft Conversions
all Roof Work and Double Glazing

"No job too small or too big"
Free estimates and advice
References available

For fast friendly service call
Mark Cleland on 016973 61256 or 07875 385781

Email: markacleland@aol.com

Plastering & Drylining

H.M. Wood
C.I.C.S. Approved
Tel: 016973 31219
Mob: 07940 925718

David Baxter, Roofer

Free Quotes
Reasonable Rates
20 years Experience
Mob: 07749 041333

Decorators

Frank Daly

Holly Cottage
Blitterlees, CA7 4JR
Tel: 016973 32575
For traditional service and value.

Peter Farrier

The Garth
Blitterlees, CA7 4JN
Tel: 016973 33039
Mob: 07900 914484
Papering, paint effects, coving, tiling & DIY
25 years reliable service.

Michael G Barton

Silloth
Tel: 016973 33171
Mobile: 07867 916709
Time-served tradesman
Restoration specialist, internal & external.



Commercial & Domestic

Free Quotations

Telephone:
01900 881156
07732 690 696

Email: ptrwise@aol.com

Bally Nook, Mawbray
Maryport, CA15 6QT



Domestic Appliance Repairs



SALES, REPAIRS & SPARES

Washers + Dryers +
Cookers + Vacuums +
Fridges/Freezers & More

Free Delivery &
Installation On All Major
Appliance Sales!

TEL: 016973 49087
BILL LEWIS: 07808385517
MARTYN NIXON:
07773515975
2 KING STREET, WIGTON

Electricians



Fire Alarms
Maintenance
Emergency Lighting
Testing & Certification
Electrical Installations
Portable Appliance Testing
Tel: 016973 32199
Mob: 07720 435458

Steven Henderson Electrical

for all your electrical work
City & Guilds Qualified
Tel: 016973 31163
Mob: 07708 567193

Ironwork

Greg Wilson

Mobile: 07715 046769
Tel: 016973 31792
Gates & Railings
General Welding and Repair Work

Plumbers

C C Plumbing

All plumbing work undertaken
No job too small
Tel: 01900 881063
Mob: 07916 292946

D Hagan Plumbing & Heating Engineer

Time served tradesman
All work undertaken
Free estimates
Tel: 016973 32143
Mob: 07793 722132

Joiners

GEOFF DAVIES

Time Served
Carpenter and Joiner
28 years Experience
Friendly and Professional Service
Tel: 016973 31861
Mob: 07821 172479

Joiners cont'd

OUTDOOR JOINERY

Gates
Garden Fencing
Sheds
Pet & Poultry Housing
and more....

Tel Norman on:
016973 61256 or
07762 289357

DAVID READ Carpentry & Joinery

Property Repairs & Maintenance

FREE ESTIMATES

No Job Too Big
Or Too Small

City & Guilds
Approved with 30
years Experience

016973 32245
07759 783823

John Watson Joinery

Tel: 016973 61811
Joiner, Carpenter,
Custom made a
speciality, specialist in
bespoke furniture and
Marine work
Web site:
TransatlanticLumber.com

Printers

S & A PRINTING

of Skinburness

* YOUR LOCAL PRINTERS *

Business & Wedding
Stationery
Distinctive Business Cards
(incl. plastic)
Personalised
Christmas Cards
Promotional Items &
General Printing

Call Stewart or Anne on
016973 31039

Tilers

Alaric Weightman

Walls, Floors,
Kitchens, Bathrooms
Full Bathroom
Fitting Service
Available

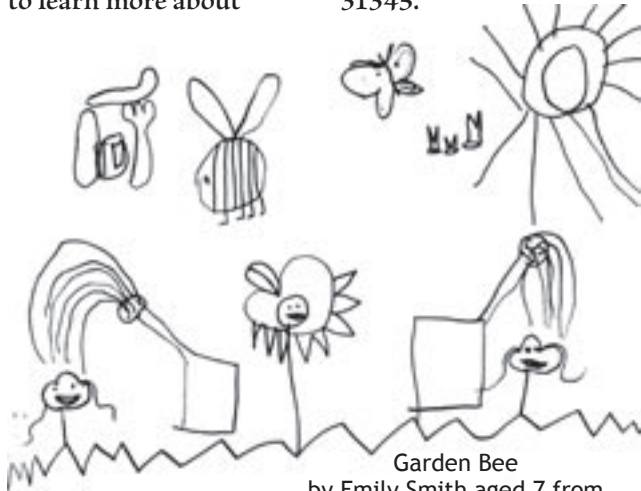
Tel: 016973 32779
Mobile: 07708 982355
Over 20 years experience
Free advice & estimates
Discounts for locals
All work guaranteed

Alexander Technique in Silloth?

The Alexander technique is a practical method of self-help, which teaches us to become more aware of how we use our minds and bodies in activity. By choosing the way we react to stress and by letting go of habits of tension, we can reduce pressure on our joints and rediscover our natural balance and ease of movement.

It is usually taught on a one-to-one basis through a combination of gentle manual and verbal guidance to help you experience poise and efficient movement. It can also be taught in group settings.

It may be helpful for those with muscular pain in the back, neck and shoulders, stress, anxiety, headaches. Or it may enhance performance for example teachers, musicians, actors, dancers, professionals in a demanding job (especially those who use computers) or indeed anyone who wants to learn more about



Garden Bee
by Emily Smith aged 7 from
Silloth Primary School

Window Cleaners

Abbey Cleaning Services
Oakwood End
Main Street, Abbeytown
CA7 4RU
Call Ryan on 016973 61162 - your local reliable window cleaners

S.G. Hart

6 Burnswark Terrace
Silloth, CA7 4EF
Tel: 016973 31517
Silloth's regular window cleaner since 1974.



Silloth Tide Tables

March 2007
TIMES OF HIGH WATER
AT SILLOTH
(Courtesy of A.B.P. Silloth)
Times in GMT

Heights in metres					
	Time	Ht	Time	Ht	
1ST. THUR.	1019	6.5	2246	6.5	
2ND. FRI.	1102	7.0	2325	7.0	
3RD. SAT.	1139	7.3	2359	7.1	
4TH. SUN.	****	***	1212	7.4	
5TH. MON.	0029	7.2	1242	7.4	
6TH. TUES.	0100	7.2	1314	7.4	
7TH. WED.	0130	7.1	1344	7.2	
8TH. THUR.	0159	7.0	1415	7.0	
9TH. FRI.	0230	6.7	1446	6.6	
10TH. SAT.	0302	6.4	1522	6.2	
11TH. SUN.	0339	6.0	1605	5.6	
12TH. MON.	0429	5.4	1705	5.1	
13TH. TUES.	0540	4.9	1828	4.8	
14TH. WED.	0714	4.9	2003	5.0	
15TH. THUR.	0841	5.5	2118	5.6	
16TH. FRI.	0939	6.3	2209	6.5	
17TH. SAT.	1025	7.2	2253	7.2	
18TH. SUN.	1108	7.8	2334	7.7	
19TH. MON.	1150	8.4	****	***	
20TH. TUES.	0015	8.1	1232	8.6	
21ST. WED.	0057	8.2	1318	8.5	
22ND. THUR.	0139	8.1	1401	8.3	
23RD. FRI.	0221	7.7	1445	7.7	
24TH. SAT.	0304	7.2	1533	7.0	
25TH. SUN.	0352	6.4	1629	6.0	
26TH. MON.	0452	5.6	1744	5.2	
27TH. TUES.	0625	5.1	1923	4.9	
28TH. WED.	0757	5.2	2041	5.3	
29TH. THUR.	0904	5.7	2136	5.9	
30TH. FRI.	0954	6.4	2219	6.4	
31ST. SAT.	1035	6.9	2257	6.9	

FULL MOON--SAT. 3RD.
NEW MOON--MON. 19TH.

themselves.

If you are interested in joining a 5 week introductory class in Silloth, (venue to be arranged) please call Jackie on 016977 41300 or Bena on 016973 31345.

On the Waterfront

Report by: Tommy Legs

January was a quite busy month with six vessels visiting the port.

The first was the WALTER HAMMANN with fertilizer, next was the tanker ZAPADNYY with molasses from Rouen. The SEA RUBY then brought fertilizer from Ijmuiden and the BEN VARREY brought wheat from Liverpool. The NEERMOOR then brought fertilizer from Ghent and finally the SCOT PIONEER brought a cargo of paper pulp.

Did You Know?

Q: The first couple to be shown in bed together on prime time TV?

A: were Fred and Wilma Flintstone.

Q: The average number of people airborne over the US any given hour?

A: 61,000.

Advertise

in the
Tradesmens
Section
only

£74

for twelve issues
or a 7cm box
for only

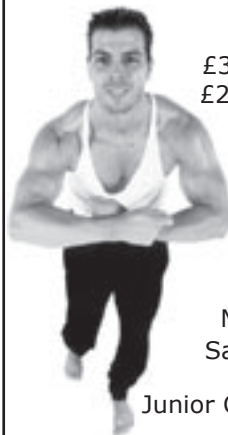
£139.50

for twelve issues

Solway Fitness Centre

Boxercise Classes
on Thursdays @ 6pm
Booking Required

A Healthy Body Brings
A Healthy Mind



Prices:
£3 per session
£22 per month

Top Up your Tan
Tanning Booth £1 per 3 minutes

Concessions for over 60's
& under 18's

Monday to Friday: 2pm-12pm
Saturday to Sunday: 11am-1pm

Junior Classes Daily @ 3:30pm

Women's Circuit Training on Mondays @ 6pm

Tel Colin: 016973 33000

GLEN HOLDER TRANSPORT

*Low Loader Service
PLANT & TOOL HIRE
Plant Refurbishment
Courier Service*

*Free Local Delivery on Plant & Tool Hire
in the Silloth area*

Tel: 016973 32061 Mobile: 079 2126 6480

CUPS AND SAUCERS FARM BAKERY & TEA SHOP SEAVILLE

Enjoy good old fashioned and traditional
home baked food beside a roaring coal fire
Orders taken for scones and cakes

Open everyday except Monday 10am to 5pm

Tel: Kathleen 016973 61256
halfway between Abbeytown & Silloth

SECURE STORAGE

STEEL STORAGE
CONTAINERS
TO LET ON
SILLOTH AIRFIELD
SECURE COMPOUND
WITH CCTV
SURVEILLANCE

TEL: 016973 31276
MOB: 077 2056 0596

TOPAZ MOBILE NAIL & BEAUTY

**Luxury Manicures
Nail Extensions
Enhancing Eye
Lash & Eye Brow
Tinting, Tweezing,
Perming & Extending
Waxing
Ear Piercing**

contact:
SUE LEECE
35 Eden Street, Silloth
Mob: 07711 840958
sueleece@fsmail.net

MARKLEY TRANSPORT LTD



**Bulk
Flat
&
Express
Haulage**



Control Tower • The Airfield
Silloth • CA7 4NS
Tel: 016973 31276

HAIR AT HOME

*Be pampered in the comfort of
your own home with
Clair's Mobile Hairdressing!
Or, why not treat someone special
to a Gift Voucher*

*For information or to book an
appointment - Call Clair Todd on:
016973 32721 or 07754 523451*

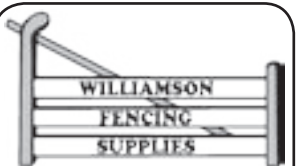
Free Consultations Available

Addison Orthodontics

**Denture Repair
Service**

54 Esk Street
Silloth

016973 32208



Posts, Strainers,
Square Timber Rails,
Galvanised & Wooden Gates,
Purlins, Wire Staples
Sawdust & Shavings
all always in stock

GARDEN GATES & FENCES
Professional Installation

Steven Williamson
Stank End Farm, Abbeytown
Tel: 016973 61044
Mobile: 077 1114 4050

CARRS COACHES



**Coach &
Minibus Hire,
Tours &
Excursions**



Tyres, Servicing & Repairs

Control Tower • The Airfield
Silloth • CA7 4NS
Tel: 016973 31276

Winters Post Office

Newspapers ~ Magazines
Sweets ~ Rock Novelties
Gifts ~ Toys
Greetings Cards ~ Postcards
Fax & Photocopying service

Eden Street, Silloth-on-Solway
Shop: 016973 31323 ~ PO: 016973 32957

Wheelchair Hire



Nationwide Service

**Call Free
0808 108 5678**

www.fredwalton.co.uk

*Visit a Real
Old Fashioned
English Pub*

The Albion

*For Traditional Ales
in a Traditional Pub*

Eden Street, Silloth
Tel: 016973 31321

**Greetings
Cards &
Gifts for all
occasions**

**Stockists of
'Me to You'
gifts, cards &
bears
also Beech's
chocolates**

Fioria

Station Road
Silloth
016973 32775

**Top Quality House Coal
and Anthracite at the Best Prices**

Contact your local approved merchant:

W. FERGUSON FUELS

Abbeytown
016973 61038

or

07711 382 189

Deliveries
within
48 hours



JACKSON'S MODELS Die-Cast Models & Plastic Kits

Corgi Platinum Stockists
We stock trucks, cars, buses,
planes, farm & construction
vehicles, etc.

33 New Street, Wigton,
CA7 9AL

Tel: 016973 42557
www.JacksonsModels.co.uk

Blue Dolphin Cafe

**All Day Breakfast
Kids Menu
Hot & Cold Snacks
Eat In or Takeaway**

Wampool Street, Silloth
Tel: 016973 32157

David Allen & Co

is committed to providing the highest
level of service to help you improve
your finances.

We have a proactive team of accountants
and tax advisors and provide a complete
package of services to local businesses,
companies, farmers, charities & clubs.

Providing

- Accountancy
- Strategic Business Planning
- Company Secretarial Services
- Tax Returns & Tax Planning
- VAT
- PAYE Compliance
- Accounts Software & Training
- Auditing

Ask for a free no obligation consultation

Registered to carry on audit work and authorised to carry on investment
business by the Institute of Chartered Accountants in England & Wales.

**DAVID
ALLEN
& Co**

**CHARTERED
ACCOUNTANTS**

Dalmar House
Barras Lane Estate, Dalston
Carlisle, CA5 7NY
Tel: 01228 711888
Fax: 01228 711826
email: mail@david-allen.co.uk
website: www.david-allen.co.uk

Kandy Shop

Cumbrian Cottage Ice Cream:

Vanilla ~ Mint ~ Peach ~ Strawberry ~ Raspberry Pavlova
Coffee Liqueur ~ Hokey Pokey ~ Almond Butter Toffeee

Over 100 sweet jars always in stock
Sugar Free Sweets ~ ClayMates

Chocolates:

Cadbury's ~ Beeches ~ Nestlé ~ Paynes ~ Ferréro
Anthon Berg ~ Elizabeth Shaw ~ Bendick's

Stockists of Jelly Belly Gourmet jelly beans
Daily & Evening Papers & Magazines delivered
Large selection of Greetings Cards

14 Criffel Street * Silloth * Tel: 016973 31331

JOHNSTONE'S PRIVATE HIRE

for private hire &
airport runs
7 days a week
24 hours a day

016973 31557
07999 934555

63 The Crofts
Silloth

THE CHARITY SHOP MacMillan Cancer Relief & North Lakeland Hospice at Home

Thank you for your
continued support
for these worthy causes

We will be pleased to
receive your unwanted
items

Collection can be
arranged
Closed Mondays

Queens Court, Criffel St.
Silloth, Tel: 016973 31696

Poems

In Forest Deep
by Whiskers

There is a place in forest deep, where you might see if you care to peep,
With silver trees and golden streams, it's in your heart; it's in your dreams.

A place of adventure where you might bide, should there be danger!
You need not hide, for in your dreams, on the wind you can ride.

Take off your shoes; dip your feet in the streams;
Lay in the forest with your favourite dreams.

Listen to the music from blue bells that ring,
As a gentle breeze blows through the trees, and silver leaves do sing.

So the world is yours to travel it seems!
For it's in your heart; it's in your dreams.

Morrison's Marauders
by Whiskers

May I say thank you to a wonderful bunch of ladies

Whom I had the privilege to escort on a monthly

Shopping spree, you where a pleasure to work for

I will miss you all very much.

PS Keep wearing your seatbelts.

Love Whiskers

Do you have a poem for the Buzz, please send it to the Editor, details on page 4.

Letters

Dear Buzz,

On behalf of my wife and myself can I give a vote of thanks to Sarah Hansford and the Silloth Open Door Group, who on the 19th December provided a free Christmas lunch for approximately sixty residents and friends of Silloth. What a wonderful meal provided on a shoe string, all we were asked for was a donation. Well worth a good donation of the paper kind. The team are building up a loyal following every Tuesday between 12 noon and 1pm in St. Andrews Hall, where young and old can meet and exchange views on life. We would therefore recommend you give it a try as soon as possible, you will be made welcome. The group are trying to raise funds to improve the kitchen facilities so as to broaden the range of food available, so please if you do attend do not forget the donation box on the way out. Thanks again to Sarah and the team, with power to your elbows your hard work will provide a wonderful service to all.

Marjorie & Graham Wilkinson

Dear Buzz,

I have been catching up with the SOLWAY BUZZ as an ex pat. I now live in Spain and read it via the internet. The December issue was of particular interest as the front page was about the Skinburness Hotel. Such a “posh” place in it's day, it even had a croquet lawn, how sad to see it's demise! I wonder what the history of the hotel is. Someone must still remember so as to provide an article for the Buzz. Edna Croft 's letter also reminded me of my last holiday in my home town. I was there with my daughter and two of my grandchildren in June 2003 weeks before my move to Spain. We stayed at The Sunset Inn, hired bikes to go out and about my grandchildren absolutely loved it and we all had a such a good time. Another item that caught my eye was that if the WI in Causewayhead with their talk on Peru as my partner and I have just returned from holiday in Peru and we went to all the places mentioned, a truly wonderful holiday. In other issues I have enjoyed the old photographs and information provide by Geoff Bland and Kenneth Winter as have so many others from what I see in you letters column. I particularly liked the photograph of the football match in a previous issue. It was between a Spanish team and the Silloth team. My uncle John was the interpreter and thanks to the Spanish my grandmother who was Spanish was able to get some salt cod and other Spanish food that were unavailable in England at that time. So you see, after 47 years away my home town still draws me.

Anita Trespaderne
Nee Slack

Dear Solway Buzz,

I would like to thank Frank, all the family, friends and neighbours for the cards, flowers and gifts during my recent stay in hospital and since coming home. My hip operation was successful. Thank you all for your kindness and support

Hazel Graham
Esk Street
Silloth

Dear Buzz,

The Trinity Methodist chapel have begun their Annual Pop In's for Soup, Roll, Tea, Biscuit and a good old chat. Five Ladies of the Chapel make a pan of soup each (all different). It is nice to see our regulars supporting us again, we would welcome anyone who has not tasted the soups and to enjoy the chat to come along and join us.

Jean Wilson

Mrs Lilian Pegram
(Nanny Peg)

Skinburness Residents Association

At an open public meeting in the Golf Hotel on 15th February Skinburness Residents met to sort out the Constitution of the newly resurrected Residents Association, this was now available from the original committee. It showed that the previous meeting had been unconstitutional as there had not been the required number of paid-up members present to form a quorum. It was therefore decided to scrap the previous unconstitutional proceedings and start again.

As there were now sufficient paid-up members present a new committee has now been formed and the Skinburness Residents Association are looking for new members and ideas to proceed with.

The main committee members are: Chairman - Simon Boniface, Vice Chairman - Stewart Small, Secretary - Kath Littleton, Treasurer - Roger Blake.

Membership costs just £10 per household per annum. All members and prospective members are welcome to attend committee meetings, these will be announced in the Solway Buzz Dates for the Diary page.

The next meeting is on the 1st March in the Golf Hotel.

Skinburness Residents Association

Application to Join, there is an annual charge payable of £10 per household payable by cash or cheque

Name:

Address:

Tel:

Email:

Proposed Projects:

Bring to the Golf Hotel on 27th February @ 7:45pm or, Post to the Secretary: Kath Littleton, Barn Cottage, Skinburness, CA7 4RA

Regalo

4 Criffel Street
Silloth-on-Solway

Tel:
016973 32770

find the hidden treasure of the Solway, stocking a large range of gifts

TOP 2 TOE
BEAUTY SALON

Beauty treatments include:
Waxing, Eyelash Tinting, Eyebrow Shaping, Manicures, Pedicures, Facials, Massage, Body Treatments & Electrolysis (permanent hair removal)

For a FREE consultation, or appointment call Shirley Parker on:
016973 33009 or 07871 413425

Salon Di Moda

Unisex Hairdressers

- Human Hair Extensions
- Wella Colouring
- Redken Treatments
- Cutting
- Styling

Opening Hours:

Tuesday 9am to 6pm

Wednesday 10am to 8pm

Thursday 9am to 6pm

Friday 9am to 6pm

Saturday 8am to 4pm

Sun/Mon closed

3 Wampool Street, Silloth

Proprietor: Jodie Housby Tel: 016973 33060

West Silloth Motors

Causewayhead Garage, Causewayhead, Silloth, CA7 4JG

Tel: 016973 32833 ~ Fax: 016973 31478

Email: mark@WestSillothMotors.co.uk

Motor Vehicle & Body Repairs

MOT Testing Station

Cars, Light Commercial, Motor Caravans

Specialists in all motor trades Recovery Service

Insurance Approved Body Repair Specialist

SCRUMPTIOUS

Baguettes
Luxury ice-cream
Fresh coffee

Phone orders welcome
016973 31300

4 Wampool Street Silloth

Open 7 days

Abbeytown Bowling Club

Report by: Gladys Temple

Abbeytown played host to Bothel Bowling Club for the first Match of the New Year.

Five games were played by each of four teams when the scores were fairly even but after a lovely supper provided by Abbeytown, members the home team began to show their home advantage and Abbeytown ended up winners 27 to 44.

The draw winners were Gladys Temple, Joyce Edwards, Malcolm Temple, Elsie Foster and Mary Mattinson from Abbeytown with Eileen Watson being the only winner from Bothel.

Abbeytown were thanked for a very friendly evening and invited to play at Bothel later in the season.

Thirteen members of Abbeytown Bowling Club made the journey to Ireby to play a

friendly match against the team there. The newly furbished hall was welcoming and comfortable but the mats very tricky for the visitors to play. Four teams played five ends then the Ireby Members provided a delicious supper.

The draw took place with the winners being Alan Litt (Abbeytown) Diane Cape (Ireby) Robert Lightfoot, Gladys Temple, Mary Mattinson and Robin Hurst all Abbeytown with Vera Petrie (Ireby) winning the last prize. Five more ends were played by each of the four teams with Ireby the winners by 37 to 28.

Malcolm Temple thanked the Ireby Members for a very pleasant evening and a delicious supper. We did not win the match but took away most of the draw prizes.

Do You Remember?

Solway Scouts Football Team



Back L-R: George Egdell, Geoff Bland, Rob Wise, Ron Wise, Rev E Mullins, Ray Wise, Laurence Blackburn
Front L-R: Jack Tinnion, Keith Baxter, Malcolm Fisher, Jim Cartner, Robin Sim

Report by: Geoff Bland

This is the Solway Scouts Football Team that played in the Carlisle Christian Welfare League during October 1947.

This game was on the Banks Ends ground

near the golf course behind Blitterlees. The three Wise boys were all cousins. Laurence Blackburn was a tough-tackling left back from Abbeytown who went on to be the Chief Constable of Cheshire.

Space Rockets & Romans

When you see the space shuttle sitting on the launch pad, you will notice the two big booster rockets attached to the sides of the main fuel tank.

These are the Solid Rocket Boosters, (SRB's). These are made at a factory in Utah. NASA would have liked them to be bigger than they are, however, as the SRB's would be shipped to Florida by train, they had to be able to fit through the tunnels on route. The standard railway gauge in the United States is, four feet eight and a half inches. The tunnels maximum width therefore is four feet ten inches. The SRB's cannot be any larger than four foot eight inches.

Four feet eight inches (4' 8") is the gauge used by the early pioneers of railway building in America because that was the gauge the early settlers had used in the UK.

In the UK they had

used four feet eight inches because the same people who made the tramways made the early railway carriages.

They used four feet eight inches because the old turnpike roads had deep wheel ruts in them from years of use in all weathers. Any other spacing would cause discomfort and broken axles.

The ancient Romans had originally built the roads to accommodate movement of troops and equipment.

Roman war chariots formed the initial ruts.

The war chariots had space between the shafts for two horses to pull the chariot. The width of the two horses dictated the spacing of the wheels on the axle.

This was formalised at four feet eight and one half inches.

So you see, one of the most advanced of modern vehicles owes a debt to the chariots of Ancient Rome.

Silloth Football Club

Come along to the Criffel Inn on Saturday March 10th for an evening of Horse Racing fun.

The races are being held in aid of Silloth Football Club funds, from 7pm to 9pm. This will be followed by Karaoke.

All are welcome

Mayors Report

At the January meeting of the Town Council the Chairman stated he had attended several meetings and events within the town. These included The 50 Year Memorial Service for the Silloth Firemen who lost their lives, the Carol Service at Christ Church and Greenrow Mission.

There was no report

from the police.

Correspondence included the following: a request from the Highways Department to arrange a meeting with regard to our complaints i.e. inconsiderate parking at road junctions and adjacent to the disabled crossing points. A request for a litter bin adjacent to the path across the Rugby field. A letter from Allerdale Borough Council

requesting a member of the Town Council to attend a site meeting on the Lido for the proposed development. A letter from Allonby Parish Council asking if we would consider tendering for the grass cutting contract within the village. It was agreed the Chairman along with Ken Wannop would arrange a meeting to discuss the details.

Councillor Markley

gave a report on the official opening of the new extension at the Primary School, a letter of thanks is to be sent for the great reception and work that went into the days festivities.

The report from the Regeneration Partnership outlined their position to date. A meeting was at this time taking place with Liz Carlisle the consultant putting the Heritage Lottery Bid together prior to meeting an officer from the Lottery to look round the Green.

Reports from both Allerdale Borough Council and Cumbria County Council both intend on the fight for and against a Unitary Authority.

Estimates were discussed for repairs to the sea front seats between the Lifeboat House and the docks entrance.

Several highways complaints are to be discussed with the area Engineer, these included damaged footways and the state of road markings and signs.

Situation Vacant SPORTS HALL ASSISTANT

£5.92 per hour

Solway Community Technology College
Liddell Street, Silloth, WIGTON, CA7 4DD.
Age Range: 11-16

Headteacher/Chief Officer:
Mrs. Susie Shepherd BA (Hons)
Tel: (016973) 31234 Fax: (016973) 32749
office@solway.cumbria.sch.uk
BUSINESS MANAGER: DAVE FOULKES

The school is seeking to appoint a Sports Hall Assistant to assist with the administration, organisation and promotion of events and activities to be held in the centre.

To deal with enquiries and bookings for the centre from members of the community in line with the centres' procedures in a professional manner.

The post hours are open to negotiation but evening, weekend and school holiday work will be required.

Applications and further details are available from the Business Manager on 016973 31234

Closing Date: 9 March 2007
Disability Symbol User: YES
Cumbria County Council Equal Opps Policy: YES
Catholic School: North West Catholic Diocese Equal Opps Policy: NO
Description: Non-Teaching - Secondary Schools

Situation Vacant MIDDAY SUPERVISOR

£5.92 per hour + free school meal
Solway Community Technology College
Liddell Street, Silloth, WIGTON, CA7 4DD.
Age Range: 11-16

Headteacher/Chief Officer:
Mrs. Susie Shepherd BA (Hons)
Tel: (016973) 31234 Fax: (016973) 32749
office@solway.cumbria.sch.uk
BUSINESS MANAGER: DAVE FOULKES

The school is seeking to appoint a midday supervisor with immediate effect.

Purpose of the job:

To supervise students during lunchtime in the school canteen.

To monitor the queuing system and ensure it operates effectively.

Applicants are required to work one hour per day (12:20 to 13:20)

Applications and further details are available from the Business Manager on 016973 31234

Closing Date: 9 March 2007
Disability Symbol User: YES
Cumbria County Council Equal Opps Policy: YES
Catholic School: North West Catholic Diocese Equal Opps Policy: NO
Description: Non-Teaching - Secondary Schools

King Bee
by Shaun Kurzyk
aged 7 from
Holme St. Cuthbert
School





Nith View Guest House

016973 32860

1 Pine Terrace
Silloth
CA7 4DT

5 Guest Rooms

www.nithview-guesthouse.co.uk

Silloth Tennis Club

Tennis Club Gearing Up for the Summer

It's only February, but Silloth Tennis Club are already in the planning stages for the forthcoming summer season of events and tournaments.

With 2007 being our seventh summer of activity since the club's revival we are always keen to introduce new

ideas and projects for our young players. This summer will be no different with a few new plans in the pipeline such as small open events held during school holidays. We are also keen to add adult coaching and adult competition to the programme.

Major Junior LTA Open Event to be Held at Maryport

Week beginning August the 13th sees a major step forward for Tennis in West Cumbria with the First Maryport Open.

Held at Netherhall and with singles and doubles competition at under 10, 12, 14, 16 & 18 levels, the event is being advertised nationwide and will hopefully bring players from outside the

county to the area.

This will probably involve some players staying over as they progress through their respective draws and will hopefully bring trade to the bed and breakfast industry.

If anyone is interested in bringing sponsorship to the event then please contact David on 07742547767.

Men's Team Unbeaten in West Cumbria Floodlit League

After winning division 2 just before Christmas, Silloth Tennis Club's men's team have got off to a flying start to division 1 and are still unbeaten with half the season over already.

The usual team of Angus Harrison, Malcolm Wise, Rory Johnstone, Ryan Johnstone, Jamie

Harrison, Colin Campbell and David Wise have added the services of Scott and Chris Whittle and are looking good for the title with only 4 matches left.

RESULTS

Silloth 5 Harrington A 3
Silloth 4 Lorton 4
Silloth 4 Maryport B 4
Silloth 5 Maryport A 3

Solway Autograss Club

Report by: Malcolm Brown

It is sad to bring the news that Solway Autograss Club has moved from Silloth Airfield and the racing will now be held at Hay Close Farm, Calthwaite. Details can be found on our website to get there.

Since moving to Silloth in 2004 the club has grown at a fantastic rate almost doubling the membership. Because of this we feel that we have outgrown the site at Silloth and we need to be closer and more central to other clubs in the UK.

We are hoping to draw other "grassers" from Manchester, Darlington and Scotland and for us to do this we need to be closer to them.

Another factor is the type of soil; the one at Silloth is of a sandy type rather than a clay type. When the track is prepared then raced on the clay type soil sticks together and produces a better racing surface.

So if you want to lose the wife and kids for a weekend bring the family to Hay Close Farm so you can watch the racing and they can visit the Maize Maze.

Solway Autograss Club:
www.solway-autograss.co.uk
Hay Close Farm:

Silloth on Solway Golf Club



L-R: Toddy Winter, Gwen Bosward, Janet Hume, Margaret English, Joe Jigsaw, Sandra Bradley, Annette Gibbons

Report by: Margaret English
Silloth on Solway Golf Club
Lady Captain 2007

Lady Captain 2006
Toddy Winter worked very hard raising money for her two charities:

Great North Air Ambulance and Jigsaw in Carlisle.

Representatives from the two charities came to Silloth on Solway Golf

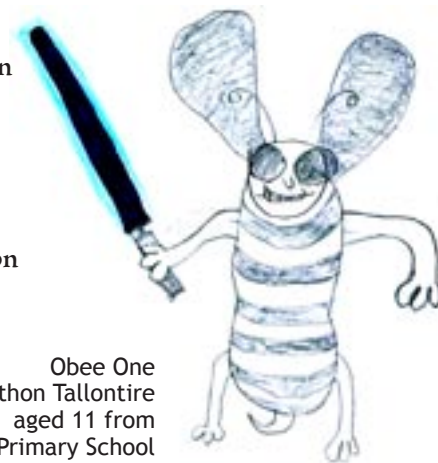
Club on 12th February where they were delighted to each collect a cheque for £550 from Toddy.

Well done Toddy!

www.hayclose.com
Solway Autograss Club,
Hay Close, Calthwaite,
Penrith, Cumbria, CA11 9PX.

The 2007 dates:
Sunday 25th March
Sunday 22nd April
Sunday 13th May (NQ)
Sunday 10th June
Saturday 7th July and
Sunday 8th July
(Two Day Meeting;
Solway Open -

Cumberland Open - Northern Challenge)
Sunday 19th August
Sunday 16th September
(Gordon Jameson Memorial).



Obee One
by Jonathon Tallontire
aged 11 from
Silloth Primary School

BOWMANS CHEMIST

Blood Pressure Awareness Week

There are 16 million people in the UK with high blood pressure. High blood pressure is the direct cause of half of all strokes and heart attacks in the UK. Failure to control blood pressure to target levels results in 62,000 unnecessary deaths each year.

Unfortunately 1/3 of people with high blood pressure don't know they have it.

Monday 5th March – Friday 9th March

Call in for your free blood pressure check

For more information drop in any time or contact Jenny on 016973 31394

NUMARK PHARMACISTS
TOGETHER WE'RE STRONGER

Bowmans Chemist
1-3 Station Road
Silloth